

POINT	LENGTH	PIPE TYPE	POINT	LENGTH	PIPE TYPE	
ABUTMENT #1			ABUTMENT #2			
A-B	36.98'	4" Perforated	A-B	8.00'	6" C.M.P.	NE
B-C	36.83'	4" Perforated	B-C	11.73'	4" Non-Perforated	NE
			C-D	12.72'	4" Perforated	NE
D-E	36.84'	4" Perforated	D-D'	38.27'	4" Perforated	NE
E-C	49.83'	4" Perforated	D'-E	48.24'	4" Perforated	NE
			E-F	6.20'	4" Perforated	NE
C-F	56.67'	4" Non-Perforated	F-G	5.45'	4" Perforated	NE
F-G	8.00'	6" C.M.P.	G-H	9.74'	4" Perforated	
			H-I	86.66'	4" Perforated	
			I-J	35.44'	4" Perforated	
			K-L	17.75'	4" Perforated	SE
			L-M	15.75'	4" Perforated	SE
			M-N	14.75'	4" Perforated	SE
			N-O	59.80'	4" Perforated	SE
			O-P	7.00'	4" Non-Perforated	SE
			P-Q	38.27'	4" Non-Perforated	SE

BILL OF MATERIALS FOR ABUTMENT STRIP DRAIN

	ABUT #1	ABUT #2	UNIT
Bridge Backwall Prot. System	293.5	273.4	S.Y.
Strip Drain	254.8	204.9	S.Y.
* 4" Perforated Pipe	160.5'	131.8'	L.F.
* 4" Non-Perforated Pipe	56.7'		L.F.
* 6" C.M.P.	8.0'		L.F.

* Subsidiary to "Abutment Strip Drain"

Legend
 NE- Subsidiary to Northeast Walls
 SE- Subsidiary to Southeast Stair Access.

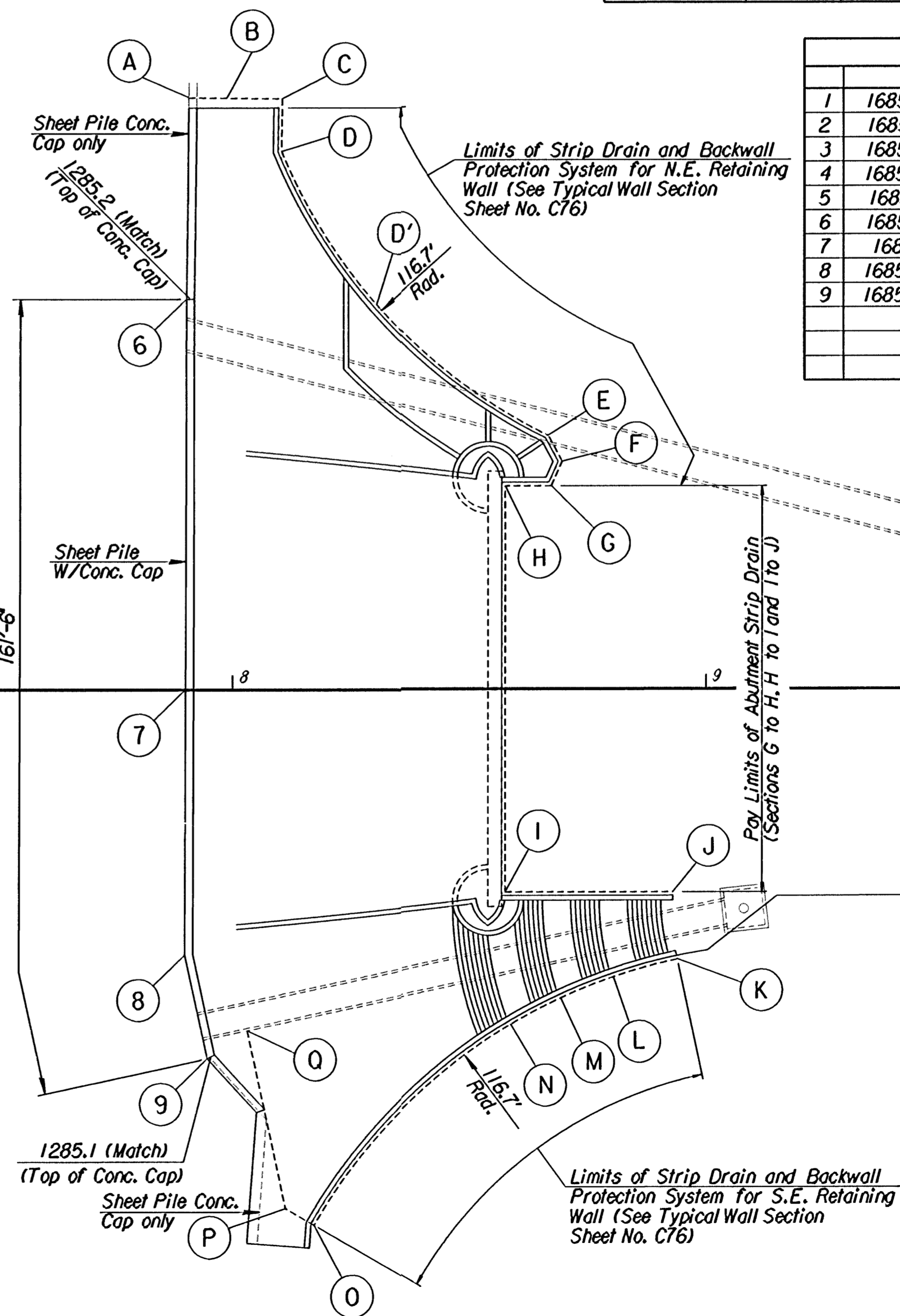
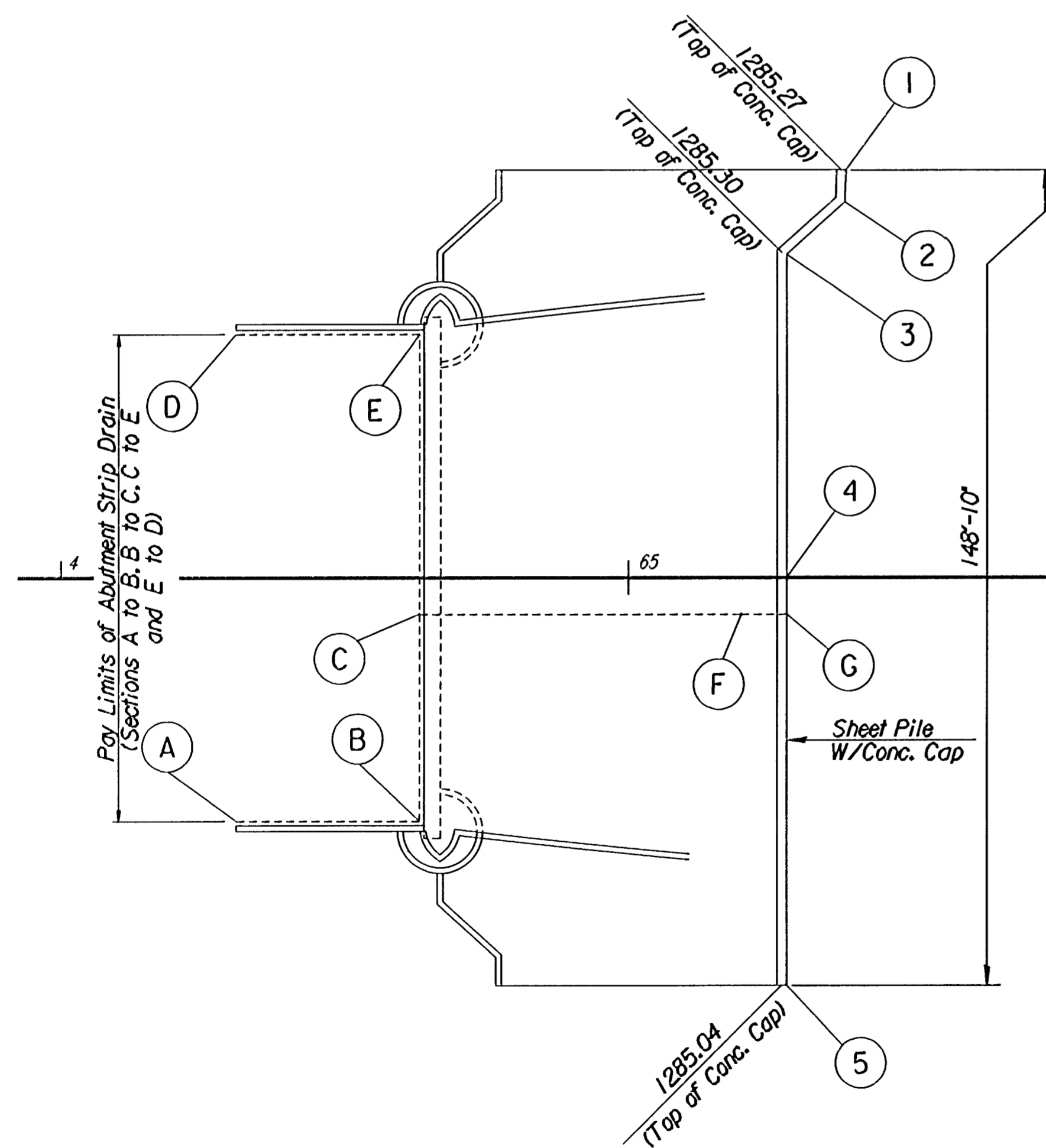
BILL OF MATERIALS FOR NE & SE RETAINING WALL DRAINS AT ABUT.#2

	NE	SE	UNIT
Bridge Backwall Prot. System	99.6	69.4	S.Y.
Strip Drain	36.7	34.7	S.Y.
4" Perforated Pipe	110.9'	108.0'	L.F.
4" Non-Perforated Pipe	11.7'	45.3'	L.F.
6" C.M.P.	8.0'		L.F.

ABUTMENT DRAIN INFORMATION						ABUTMENT DRAIN INFORMATION					
REFERENCE	POINT	STATION	OFFSET	ELEVATION	DROP ELEV.	REFERENCE	POINT	STATION	OFFSET	ELEVATION	DROP ELEV.
ABUTMENT #1	A	64+30.88	43.33' Rt	1291.50		ABUTMENT #2	A	67+90.81	125.44' Lt.	1282.50	
	B	64+63.25	43.33' Rt	1291.25	1286.63		B	67+98.81	125.36' Lt.	1282.59	
	C	64+63.25	6.50' Rt	1286.25			C	68+10.53	125.24' Lt.	1284.25	1282.70
	D	64+30.88	43.33' Lt	1291.50			D	68+10.40	114.07' Lt.	1284.50	
	E	64+63.25	43.33' Lt	1291.25	1286.77		D'	68+30.37	81.52' Lt.	1287.25	1285.00
	F	65+19.92	6.50' Rt	1282.59			E	68+66.64	53.73' Lt.	1287.50	
	G	65+27.91	6.50' Rt	1282.50			F	68+69.60	48.28' Lt.	1287.78	
							G	68+67.32	43.33' Lt.	1287.85	
							H	68+57.58	43.33' Lt.	1287.95	
							I	68+57.58	43.33' Rt.	1290.25	1288.34
							J	68+93.03	43.33' Rt.	1290.50	
							K	68+93.96	57.32' Rt.	1296.50	
							L	68+80.47	61.06' Rt.	1296.25	1292.50
							M	68+69.34	65.53' Rt.	1292.25	1288.50
							N	68+58.73	71.12' Rt.	1288.25	1285.50
							O	68+17.21	113.25' Rt.	1284.75	
							P	68+11.17	109.72' Rt.	1284.50	
							Q	68+03.11	72.31' Rt.	1283.50	

SHEET PILE LOCATIONS

	N	E	STATION	OFFSET
1	1685421.28	1646853.03	65+38.39	72.12' Lt.
2	1685415.80	1646854.30	65+38.19	66.49' Lt.
3	1685404.09	1646846.79	65+27.91	57.12' Lt.
4	1685348.94	1646861.58	65+27.91	€
5	1685279.21	1646880.27	65+27.91	72.17' Rt.
6	1685496.83	1647093.59	67+90.31	82.78' Lt.
7	1685416.81	1647114.81	67+90.09	€
8	1685362.44	1647129.23	67+89.94	56.25' Rt.
9	1685342.45	1647139.50	67+94.67	78.22' Rt.



No.	Revisions	By	Date

CITY OF WICHITA, KANSAS
 MICHAEL E. LINDEBAK, P.E.-CITY ENGINEER
 DOUGLAS AVENUE BRIDGE
 OVER ARKANSAS RIVER
DRAIN & SHEET PILE LAYOUT
 CITY OF WICHITA PROJECT NO. 472-82721
PROFESSIONAL ENGINEERING CONSULTANTS, P.A.
 WICHITA, KANSAS

Designed by	R.A.S.	Checked by	R.A.S.
Drawn by	D.J.W.	Date	Sept. 1997
		Job No.	95088-4