

FHWA REGION NO.	STATE	PROJECT NO.	YEAR	SHEET NO.	TOTAL SHEETS
7	KANSAS	472-82721	1997	C100	131

TYPICAL SECTION

Reference is made to the latest edition of the CRSI "Manual of Standard Practice" for recommended industry practices concerning reinforcing steel.

Use only the following types of bar supports:

- 1) Wire Bar Supports:
 - a) Epoxy coated reinforcing: Class 1 Protection
 - b) Non-epoxy coated reinforcing: Class 1, 2, or 3 Protection
- 2) Plastic Bar Supports
- 3) Supplementary bars

When securing epoxy coated reinforcement, use tie wires or metal clips that are epoxy or plastic coated.

Do not weld reinforcing steel to bar supports or to other reinforcing steel. Shop weld spacer frames for haunched slabs.

Tie bars at all intersections around the perimeter of each mat and at not less than 2'-0" centers or at every intersection, whichever is greater.

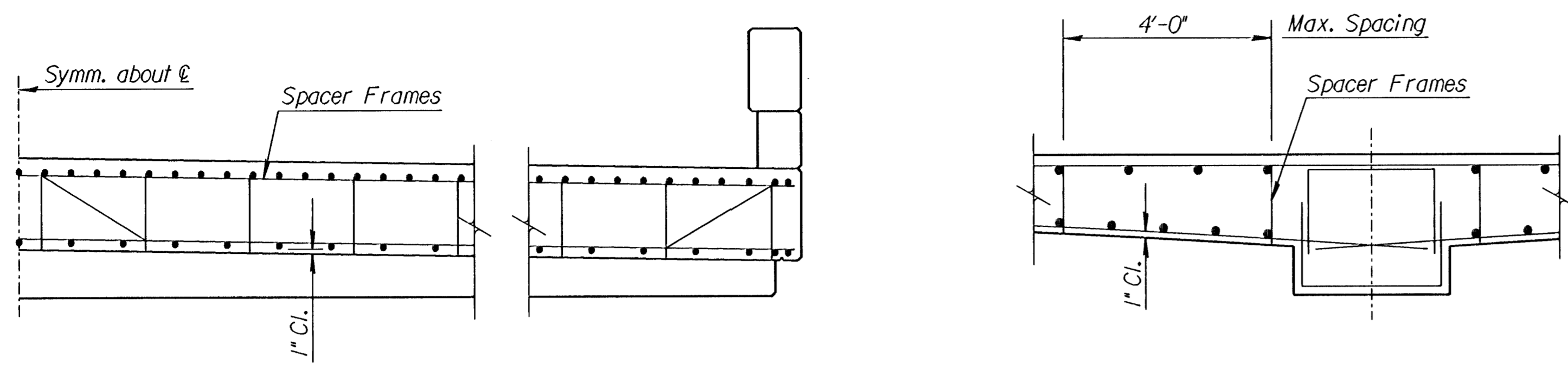
Where more than one length of bar support is required, lap the end legs so they are locked or tied together.

Use proper height supports to maintain the distance between the reinforcing and the formed surface or the top surface of deck slabs within 1/4" of that indicated on the plans.

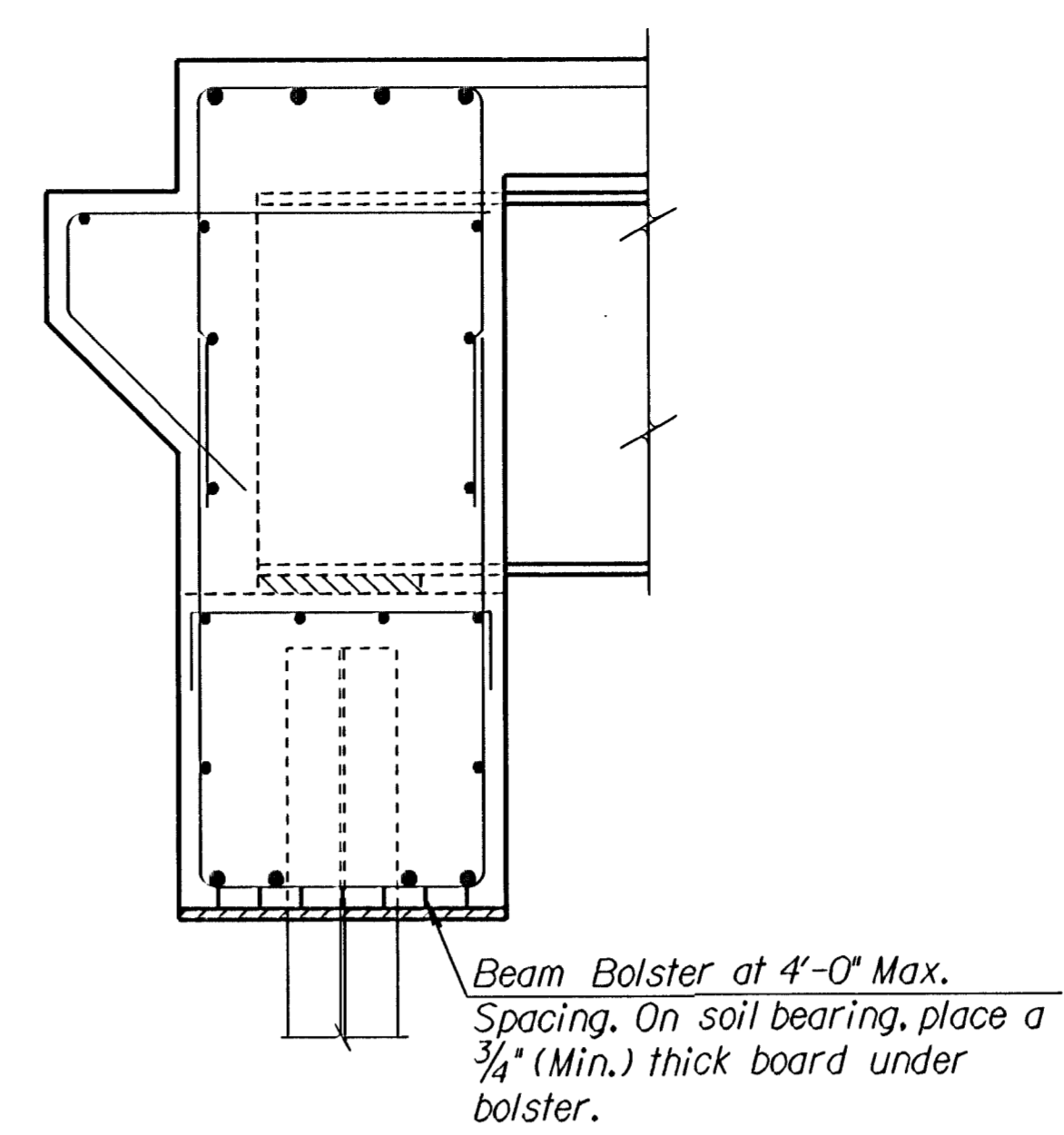
Spacings shown are maximums. Use sufficient supports, as determined by the Engineer, to retain the reinforcing steel in position.

Construct platforms, used for the support of men and equipment during concrete placement, directly on the forms and not on the reinforcing steel.

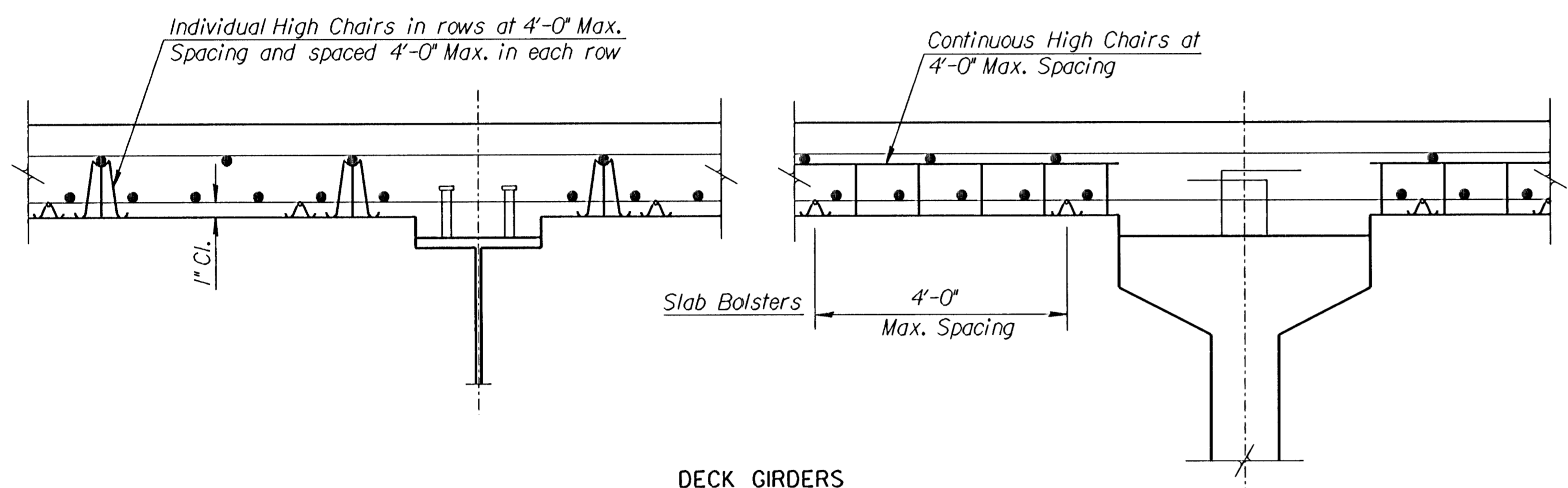
Designs and arrangements of Supports or Spacers other than as shown on this sheet, may be used with the permission of the Engineer.



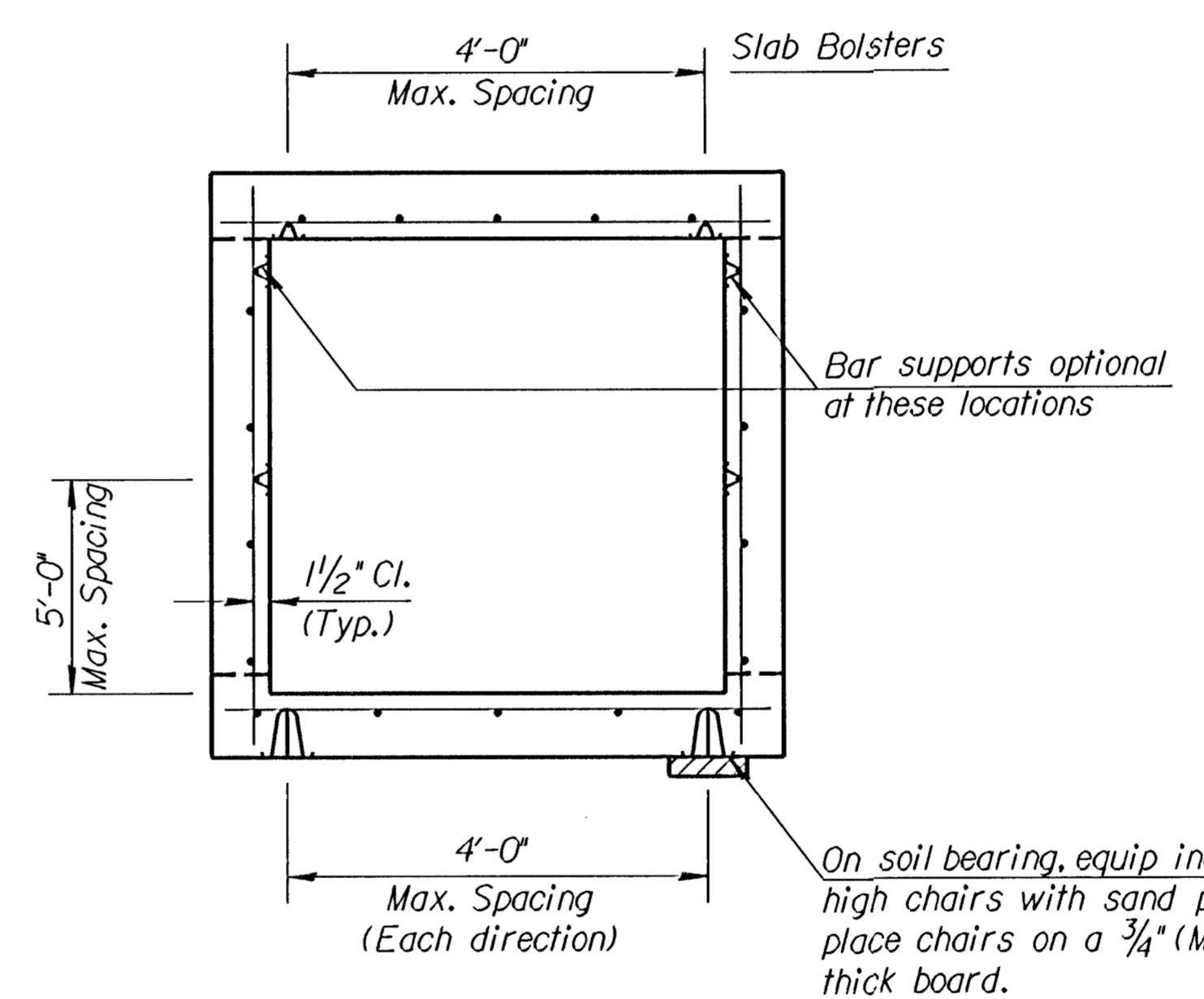
CONTINUOUS HAUNCHED SLAB



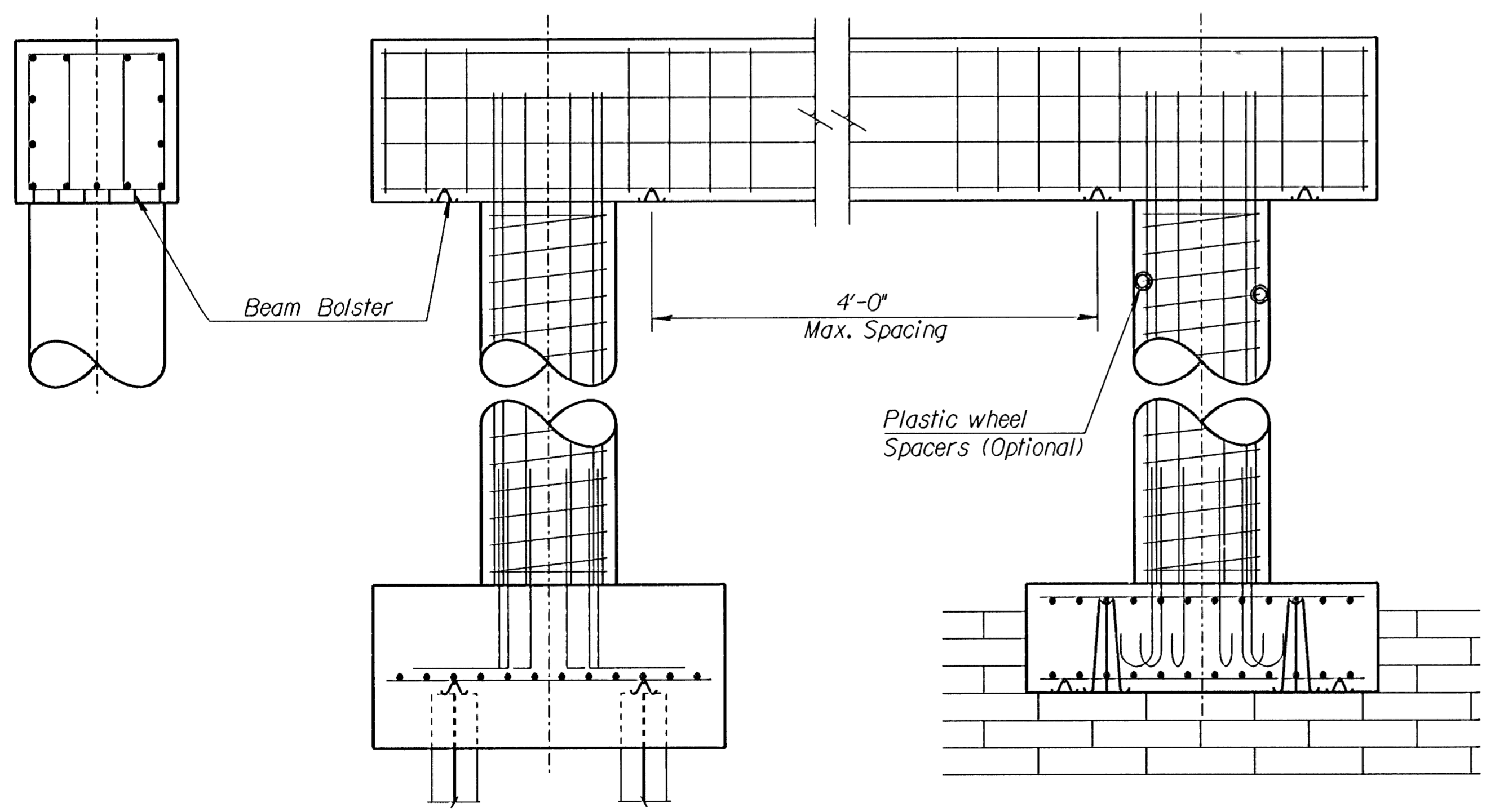
ABUTMENT



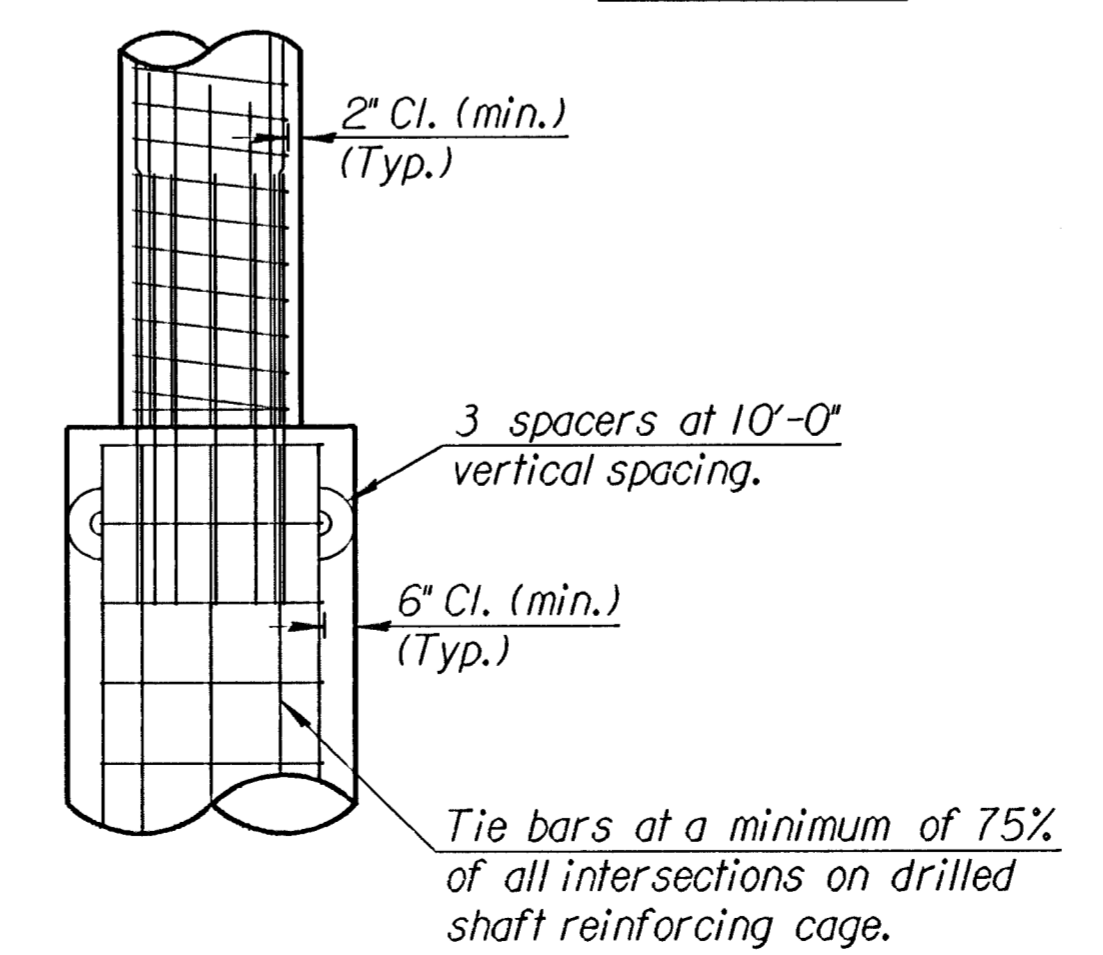
DECK GIRDERS



BOX CULVERT



PIER



DRILLED SHAFT

Plotted By : will
 Std. Base File : /usr2/stand/usb/br120.dgn
 Working File : /usr2/
 Back Up File : witch
 View: PLOT
 Plot File : /usr2/stand/standard/bar supp.dgn
 Plot Date : 8-26-97

3				
2				
1				
NO.	DATE	REVISIONS	BY	APP'D

KANSAS DEPARTMENT OF TRANSPORTATION

SUPPORTS AND SPACERS FOR REINFORCING STEEL

BR120

FHWA APPROVAL	6-15-95	APP'D	KENNETH F. HURST
DESIGNED	RAMI	DETAILED	GFK
DESIGN CK.	LRR	DETAIL CK.	RAMI
		QUANTITIES	CADD
		QUAN. CK.	CADD CK.