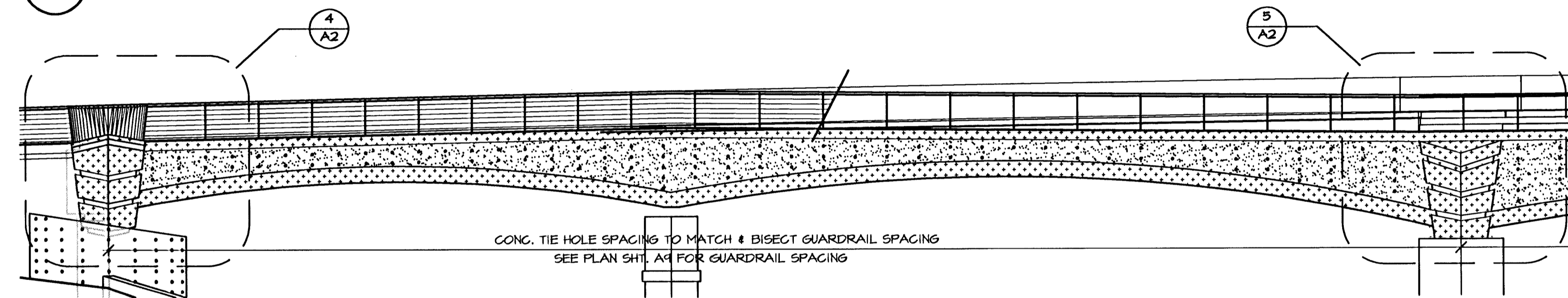
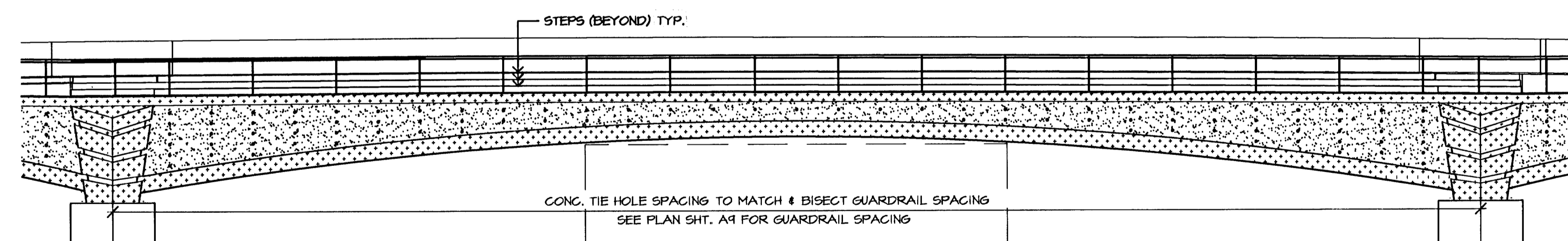


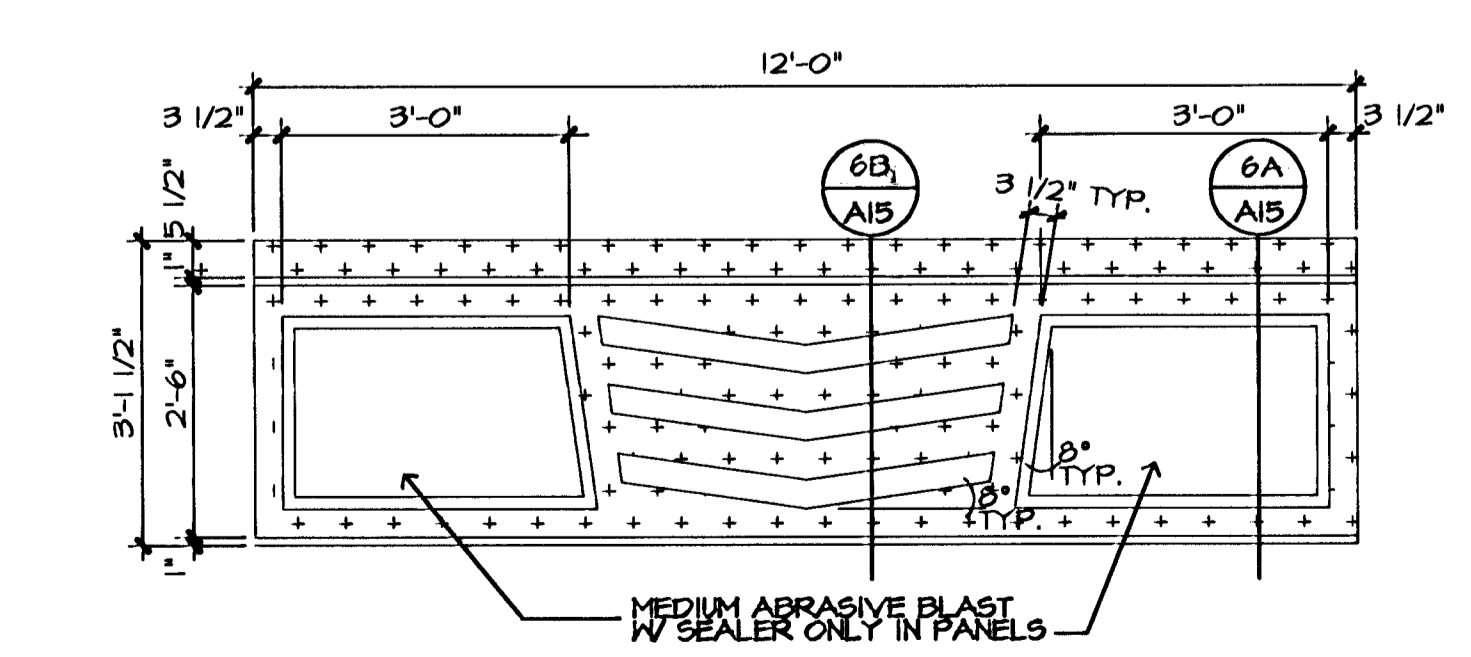
**1 ARCHITECTURAL ELEVATION - SOUTH** NORTH SIMILAR  
NO SCALE



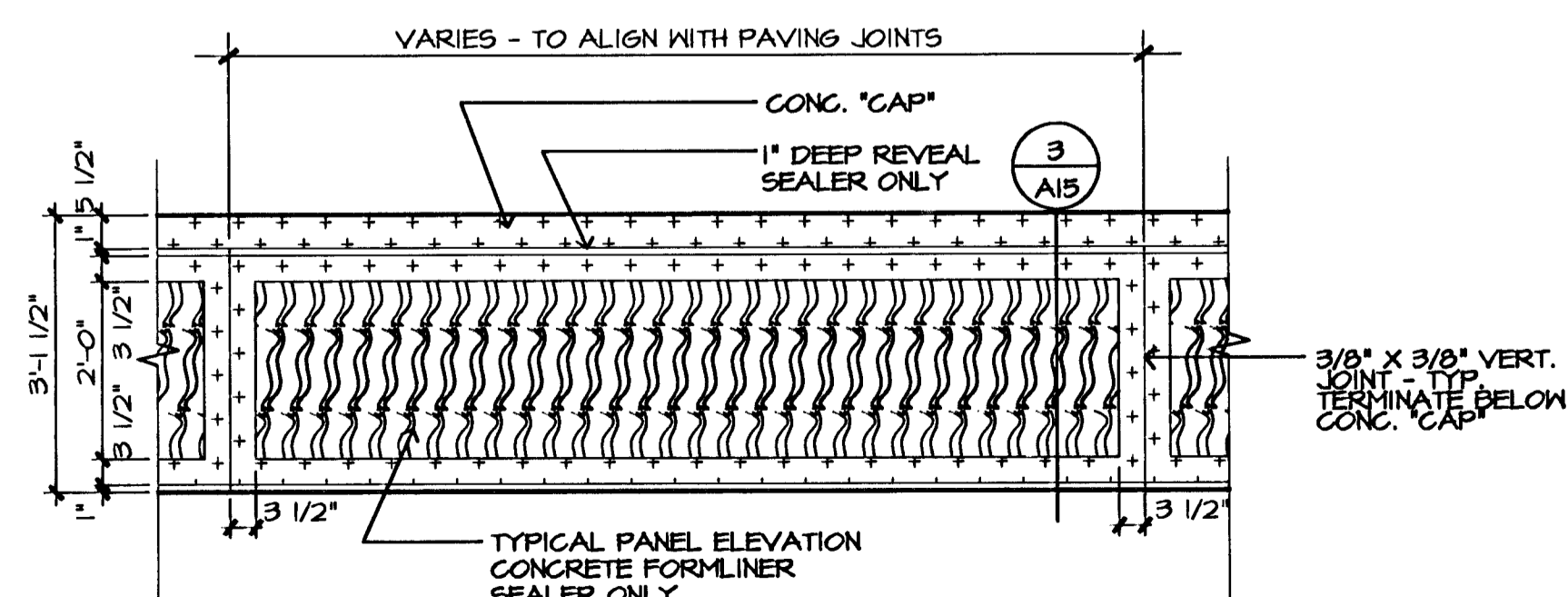
**2 ENLARGED ELEVATION** END SPAN  
0' 4' 8' 12' 1/8"=1'-0"



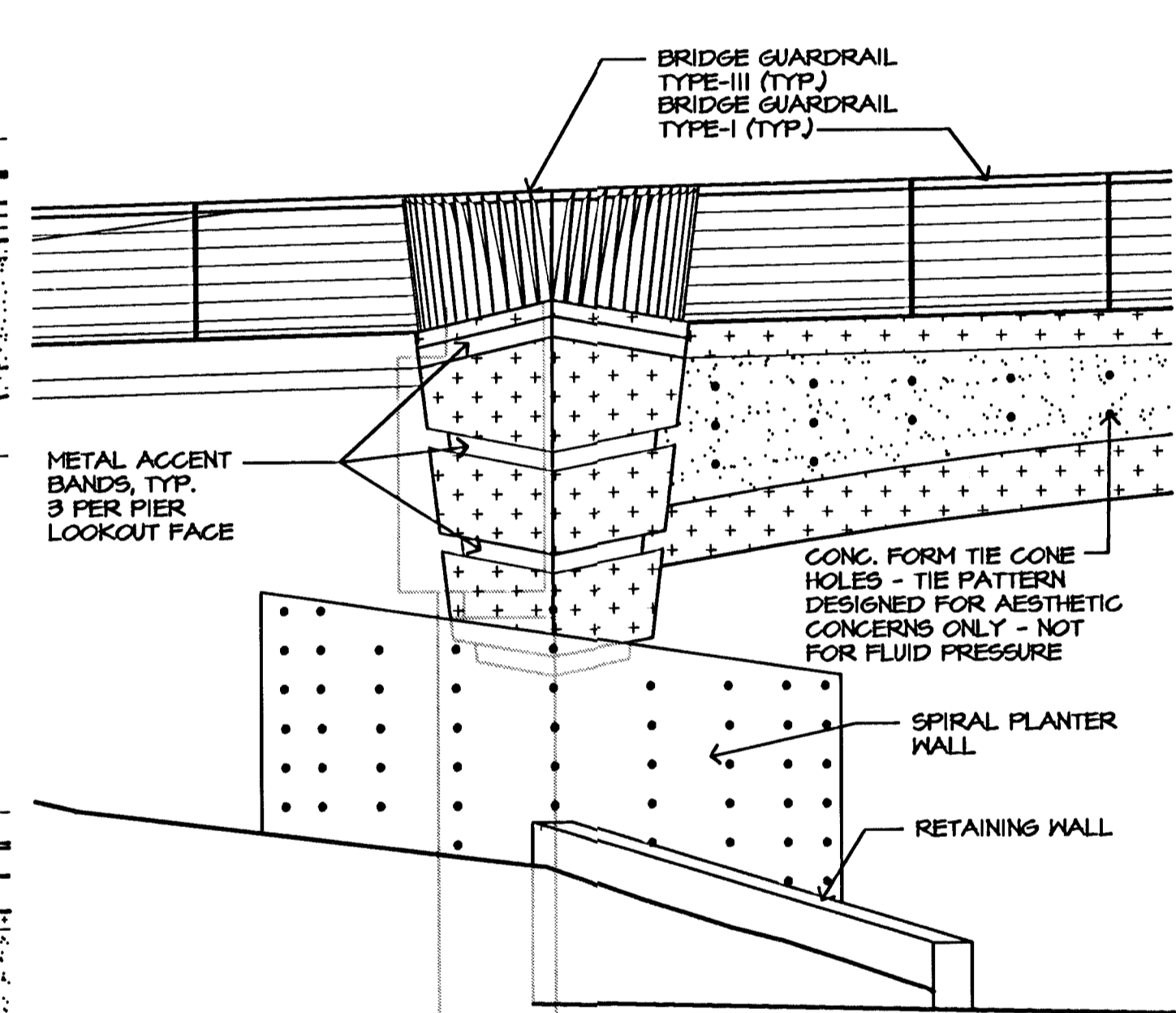
**3 ENLARGED ELEVATION** CENTER SPAN  
0' 4' 8' 12' 1/8"=1'-0"



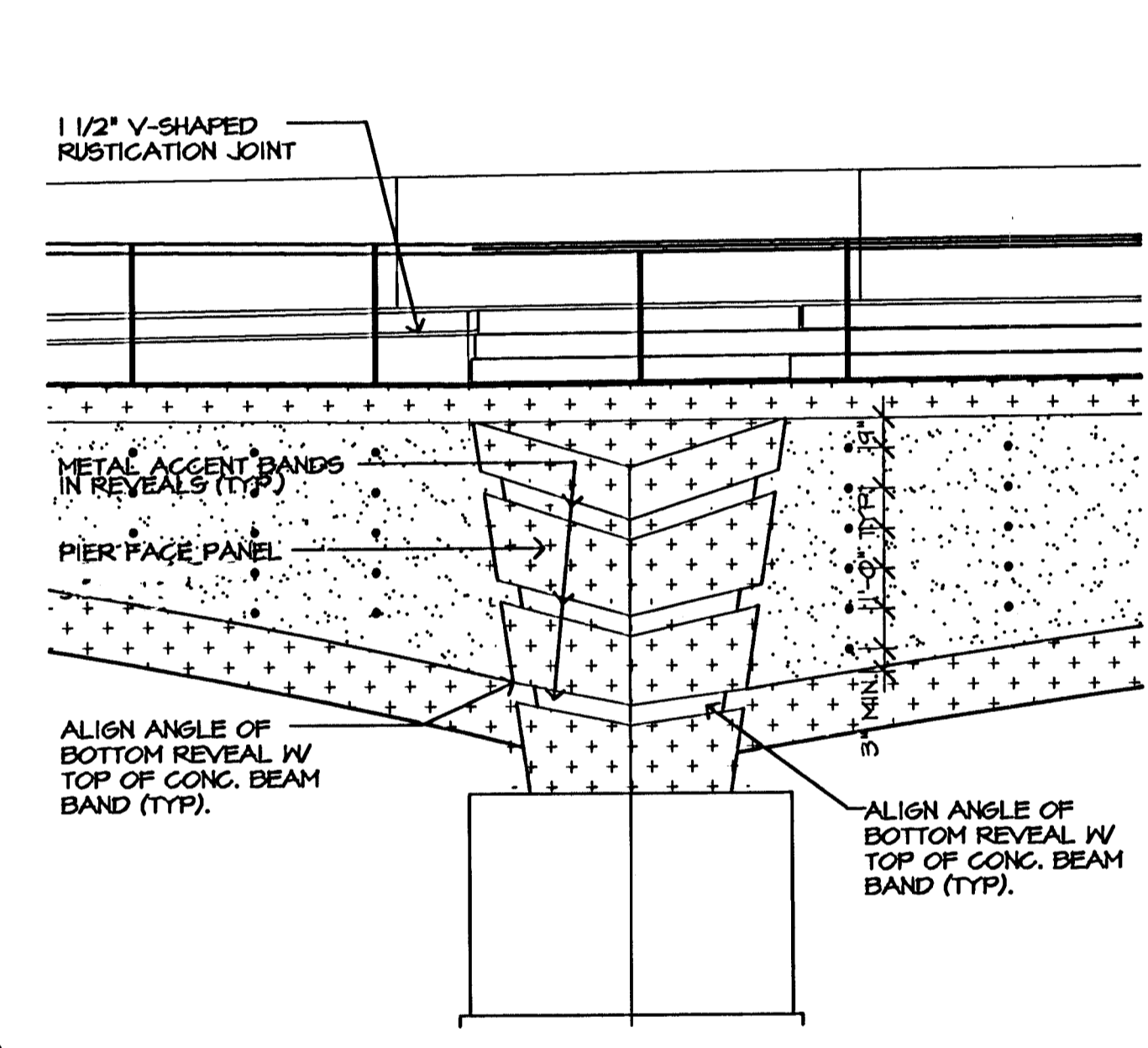
**6 CONG. FEATURE PANEL @ PIERS**  
0' 1' 2' 3' 1/2"=1'-0"



**7 SAFETY BARRIER ELEVATION** FROM PEDESTRIAN WALKWAY - TYP. PANEL  
0' 1' 2' 3' 1/2"=1'-0"

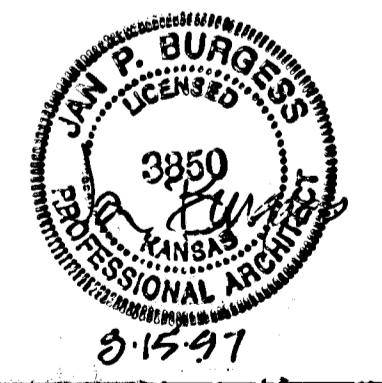


**4 ENLARGED PIER LOOKOUT** AT ABUTMENT LOCATIONS ONLY  
0' 2' 4' 6' 1/4"=1'-0"



**5 ENLARGED PIER FACE** CENTER PIERS  
0' 2' 4' 6' 1/4"=1'-0"

- LEGEND**
- CONCRETE SURFACES TO RECEIVE MEDIUM ABRASIVE BLAST FINISH WITH STAIN & SEALER
  - CONCRETE SURFACES TO RECEIVE BRUSH ABRASIVE BLAST FINISH WITH STAIN & SEALER
  - CONCRETE SURFACES TO RECEIVE MEDIUM ABRASIVE BLAST FINISH WITH SEALER ONLY



No.	Revisions	By	Date
1			

<p>GossettLivingston Architects 120 South Gayle Wichita, KS 67202 Tel (316) 265-1307 Fax (316) 265-5446</p>	CITY OF WICHITA, KANSAS MICHAEL E. LINDEBAK, P.E. - CITY ENGINEER DOUGLAS AVENUE BRIDGE OVER ARKANSAS RIVER ARCHITECTURAL ELEVATION CITY OF WICHITA PROJECT NO. 472-82721		
	PROFESSIONAL ENGINEERING CONSULTANTS, P.A. ENGINEERS WICHITA, KANSAS		
Designed by LBD/JPB Drawn by LBD	Checked by JPB	Date 9/12/97	Job No. 95088-4

P:\900\_020\_DWC\A2