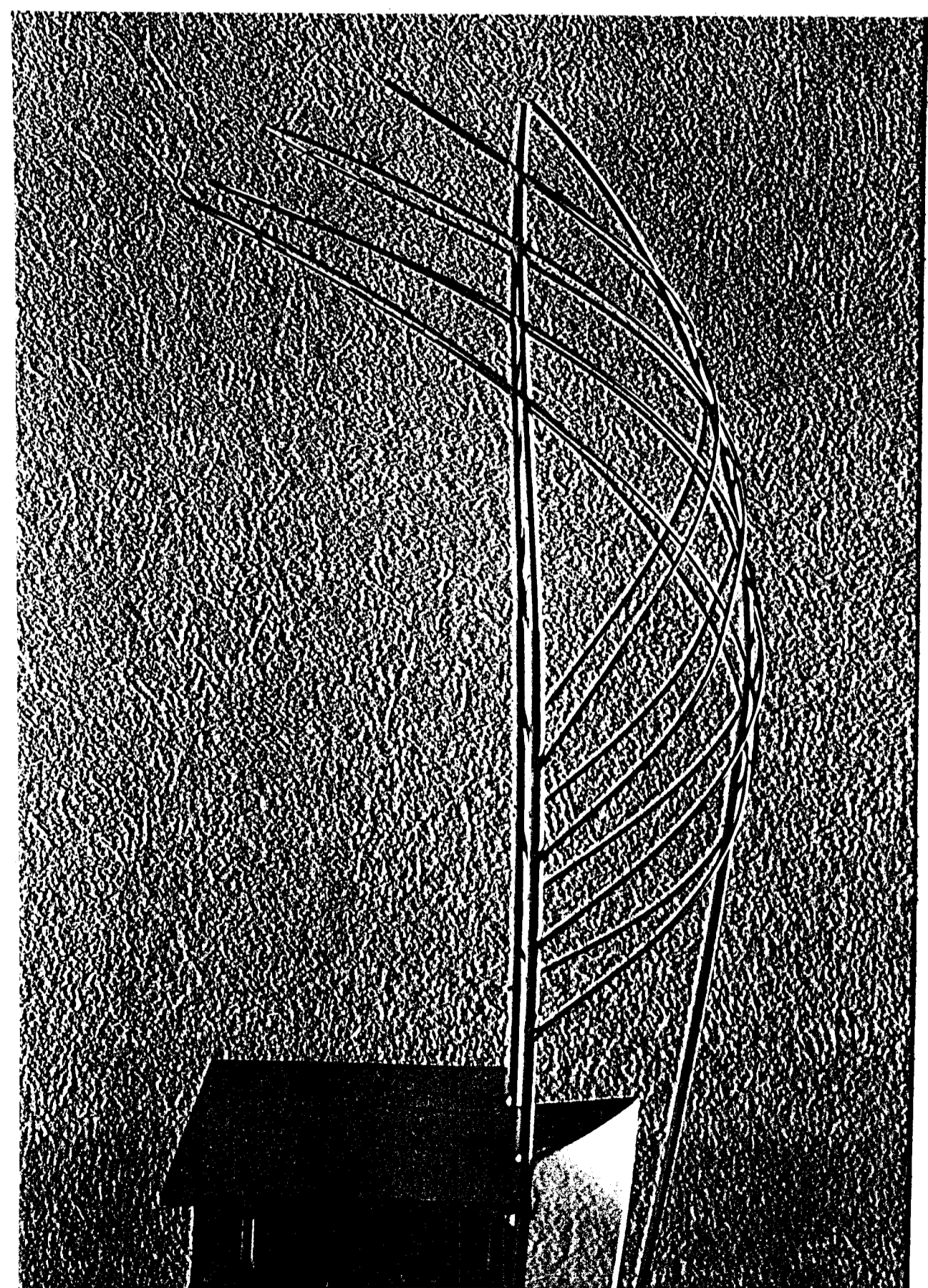
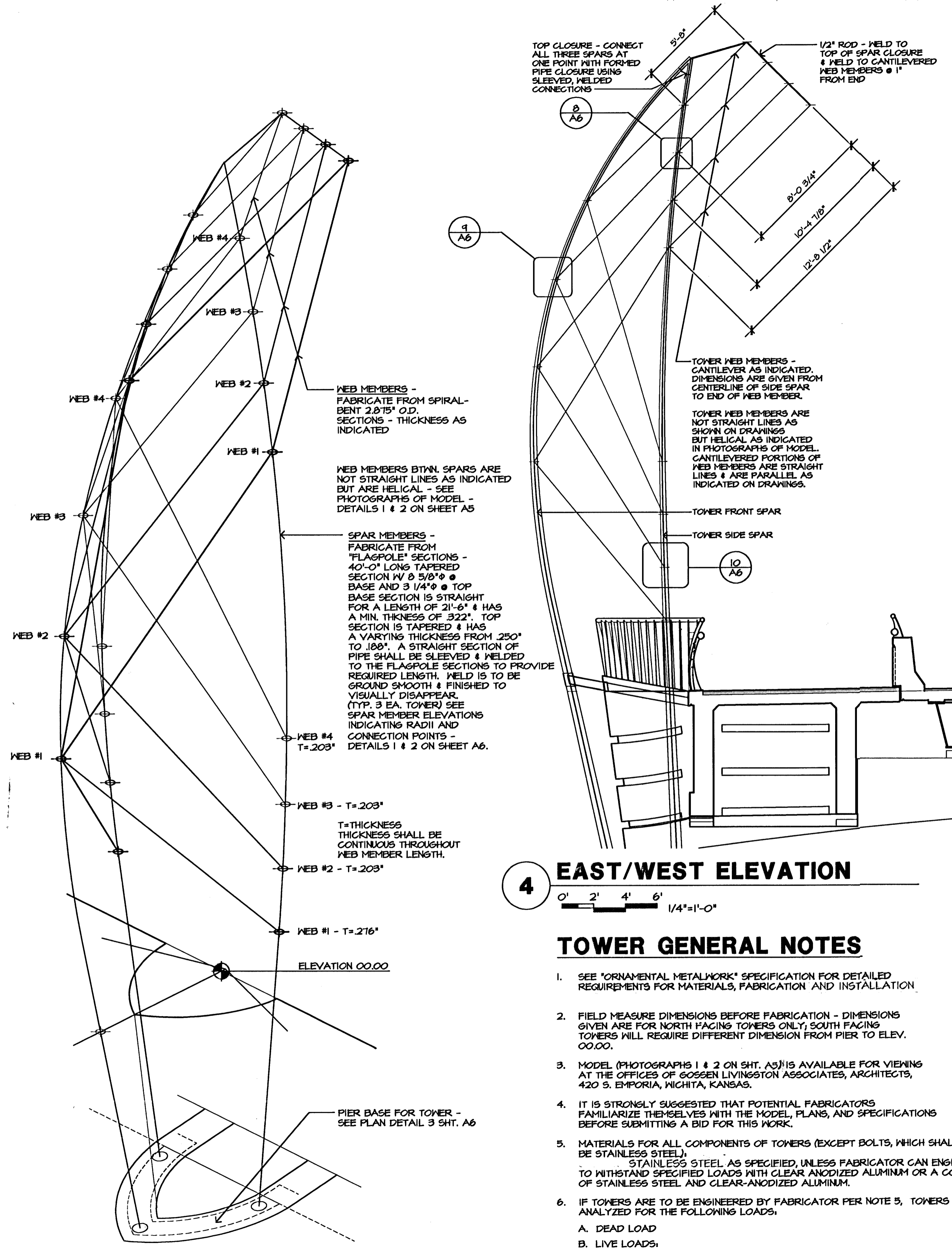


1 PHOTOGRAPH OF MODEL - FRONT
NO SCALE



2 PHOTOGRAPH OF MODEL - SIDE
NO SCALE



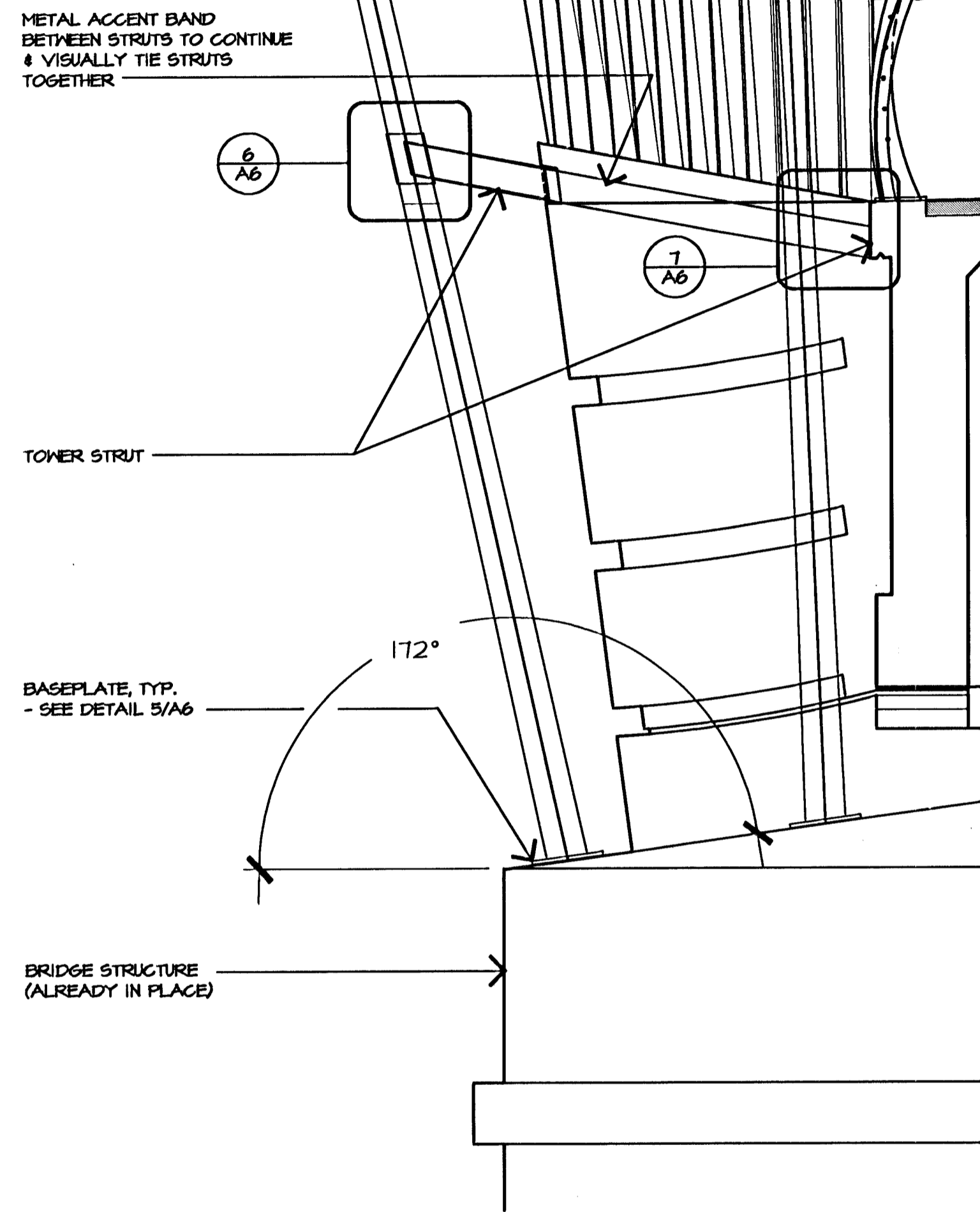
3 AXONOMETRIC DIAGRAM
NO SCALE

4 EAST/WEST ELEVATION
0' 2' 4' 6' 1/4"=1'-0"

5 TOWER MOUNTING DIAGRAM
0' 1' 2' 3' 1/2"=1'-0"

TOWER GENERAL NOTES

- SEE "ORNAMENTAL METALWORK" SPECIFICATION FOR DETAILED REQUIREMENTS FOR MATERIALS, FABRICATION AND INSTALLATION.
- FIELD MEASURE DIMENSIONS BEFORE FABRICATION - DIMENSIONS GIVEN ARE FOR NORTH FACING TOWERS ONLY; SOUTH FACING TOWERS WILL REQUIRE DIFFERENT DIMENSION FROM PIER TO ELEV. 00.00.
- MODEL (PHOTOGRAPHS 1 & 2 ON SHT. A5) IS AVAILABLE FOR VIEWING AT THE OFFICES OF GOSSEN LIVINGSTON ASSOCIATES, ARCHITECTS, 420 S. EMPORIA, WICHITA, KANSAS.
- IT IS STRONGLY SUGGESTED THAT POTENTIAL FABRICATORS FAMILIARIZE THEMSELVES WITH THE MODEL, PLANS, AND SPECIFICATIONS BEFORE SUBMITTING A BID FOR THIS WORK.
- MATERIALS FOR ALL COMPONENTS OF TOWERS (EXCEPT BOLTS, WHICH SHALL BE STAINLESS STEEL), STAINLESS STEEL, AS SPECIFIED, UNLESS FABRICATOR CAN ENGINEER STRUCTURE TO WITHSTAND SPECIFIED LOADS WITH CLEAR ANODIZED ALUMINUM OR A COMBINATION OF STAINLESS STEEL AND CLEAR-ANODIZED ALUMINUM.
- IF TOWERS ARE TO BE ENGINEERED BY FABRICATOR PER NOTE 5, TOWERS ARE TO BE ANALYZED FOR THE FOLLOWING LOADS.
 - DEAD LOAD
 - LIVE LOADS:
 - WIND: 80 MPH PER ANSI/AIAA FM 1001-60
($P = 0.00256 (1.3 V)^2$ CACH)
 - POTENTIAL FOR ACCUMULATION OF ICE BUILD-UP ON MEMBERS SHALL BE CONSIDERED.



No.	Revisions	By	Date
1			

GossonLivingston
Architecture
620 South Emporia
Wichita, KS 67202
Tel (316) 265-4307
Fax (316) 265-5646

VICKI SCUFFI STEWARTS

DESIGNER: VS/JPB
CHECKED: VS/JPB

CITY OF WICHITA, KANSAS
MICHAEL E. LINDEBAK, P.E.—CITY ENGINEER
DOUGLAS AVENUE BRIDGE
OVER ARKANSAS RIVER
LEWIS ST. BRIDGE TOWERS
CITY OF WICHITA PROJECT NO. 472-82721

PROFESSIONAL ENGINEERING CONSULTANTS, P.A.
ENGINEERS
WICHITA, KANSAS

DESIGNED BY VS/JPB CHECKED BY JPB
DRAWN BY JPB DATE 9/12/97 JOB NO. 95088-4

FILE:F:\900\020\DWG\A5