

1 SPAR #4 ELEVATION
 0' 2' 4' 6' 1/4"=1'-0"

2 SPAR #1 ELEVATION
 0' 2' 4' 6' 1/4"=1'-0"

3 SPAR #3 ELEVATION
 0' 2' 4' 6' 1/4"=1'-0"
 7 1/2" R BOLT CIRCLE

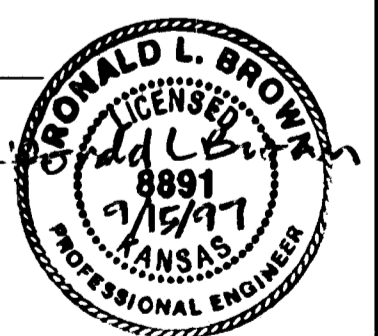
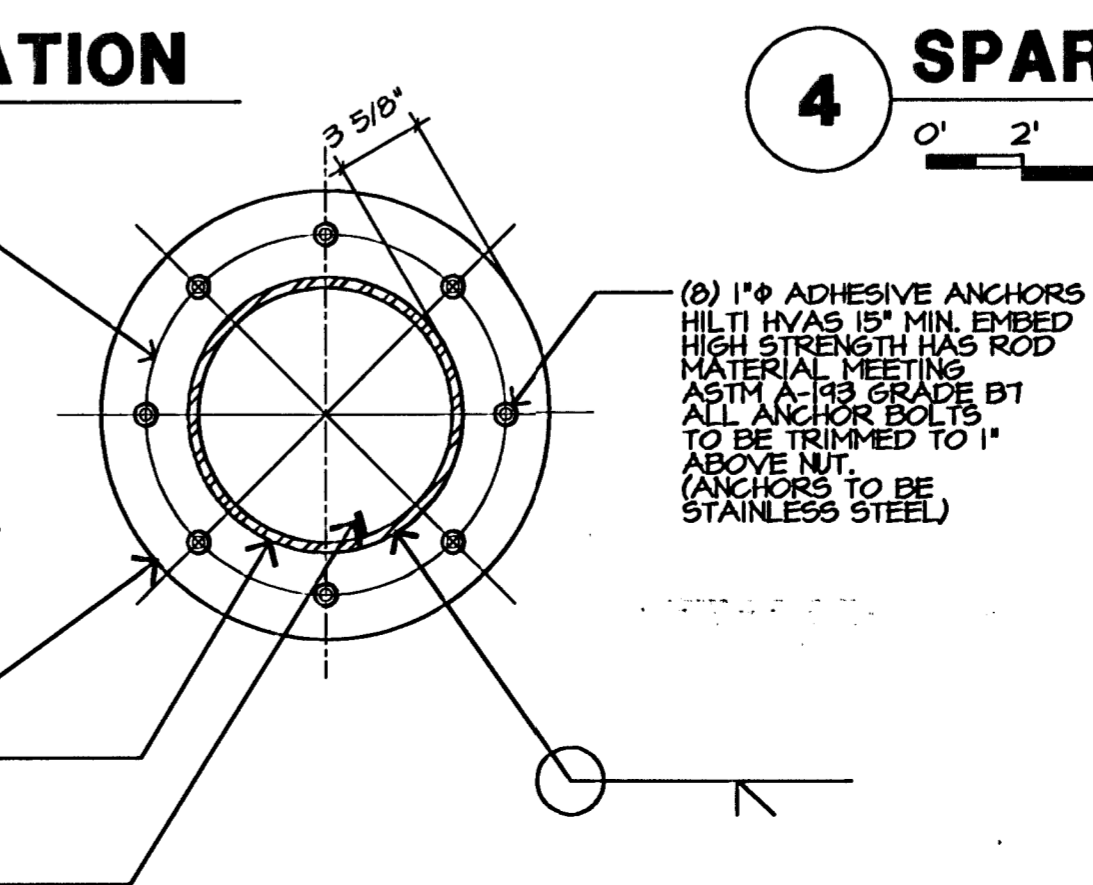
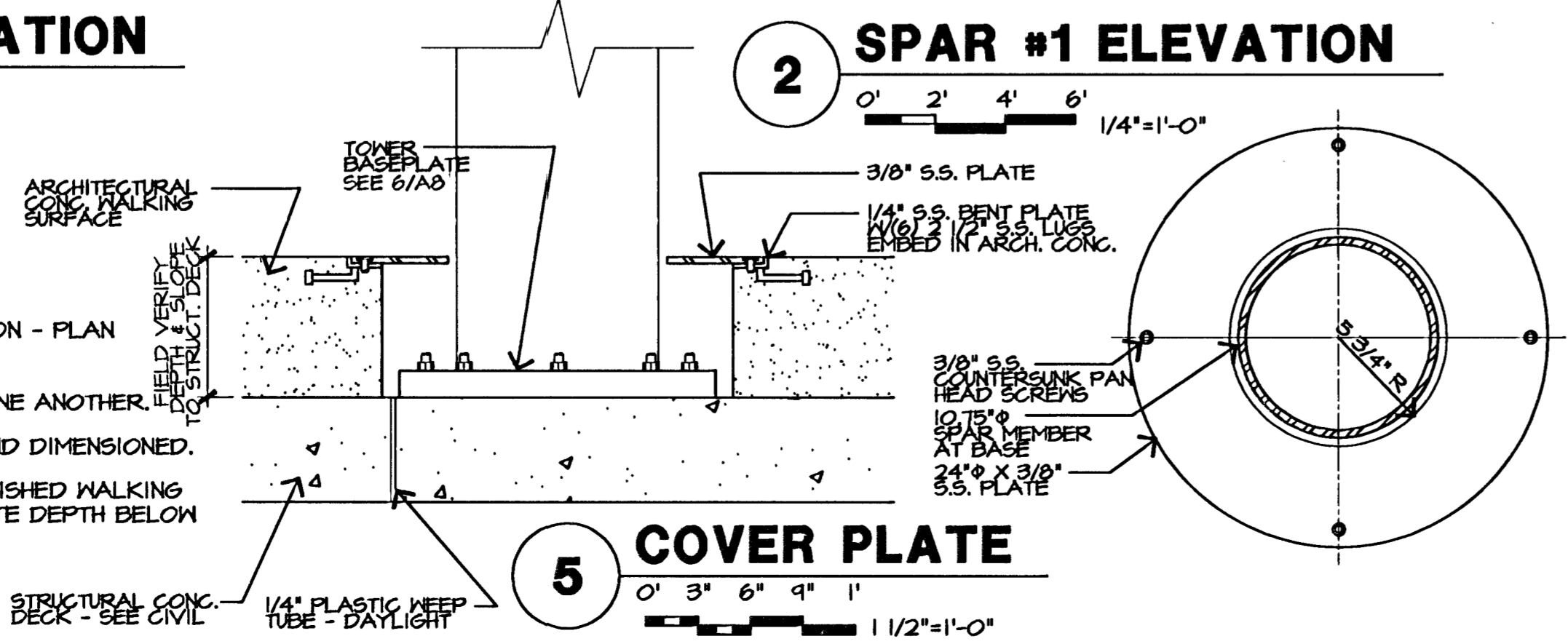
4 SPAR #2 ELEVATION
 0' 2' 4' 6' 1/4"=1'-0"

5 COVER PLATE
 0' 3' 6' 9' 1' 1 1/2"=1'-0"

6 BASE PLATE
 0' 3' 6' 9' 1' 1 1/2"=1'-0"

GENERAL NOTES:

- EACH SPAR IS INDICATED IN TRUE ELEVATION - PLAN ROTATED PERPENDICULAR TO VIEW.
- SPARS ARE IDENTICAL IN CURVATURE TO ONE ANOTHER.
- CENTERLINES OF SPARS ARE INDICATED AND DIMENSIONED.
- DIMENSIONS INDICATED ARE TO TOP OF FINISHED WALKING SURFACE. FIELD VERIFY ACTUAL SUBSTRATE DEPTH BELOW FINISH DECK & INCREASE LENGTHS REQ'D.



 GossenLivingston Architecture 425 South Empyre Wichita, KS 67222 Tel: (316) 265-4387 Fax: (316) 265-5948	City of Wichita, Kansas Michael E. Lindebak, P.E. - City Engineer Douglas Avenue Bridge Over Arkansas River City of Wichita Project No. 472-82721	
	BRIDGE TOWER SPAR ELEV'S CITY OF WICHITA PROJECT NO. 472-82721 PROFESSIONAL ENGINEERING CONSULTANTS, P.A. ENGINEERS WICHITA, KANSAS	
VICKI SCOUR SITEWORKS 1208 W. 10th St. Wichita, KS 67203-7028	Designed by VS/JPB Checked by JPB Drawn by JPB Date 9/12/97	By _____ Date _____ Job No. 95088-4

F:\900\020.DWG\A8