

LIGHTING FIXTURE SCHEDULE (P.E.C.)

| FIXT. LTR. | MANUFACTURER | CATALOG NUMBER | NO. | LAMP TYPE | VOLTS | LENS/FINISH | DESCRIPTION | DIMENSIONS | | | REMARKS |
|------------|----------------------|-----------------------------------|-----|----------------------------|-------|------------------------|-------------|------------|---|---|--|
| | | | | | | | | W | L | D | |
| ⑥ F3 | HYOREL (OR EQUAL) | CE3290-A-E175-FL-AS-02-1SS-91 | 1 | 100W ED-17 MH(COMP/UV) | 240 | | | | | | ① |
| ⑥ F3A | HYOREL (OR EQUAL) | CE3290-A-E175-SP-AS-02-1SS-91 | 1 | 100W ED-17 MH(COMP/UV) | 240 | | | | | | ① |
| ⑥ F2 | HYOREL (OR EQUAL) | CE 3546 | 1 | 35 WATT PAR 20 MH(COMP/UV) | 120 | | | | | | ② |
| ⑥ N | DEVINE (OR EQUAL) | B1017-100MH-DBZ | 1 | 100W ED-17 MH(COMP/UV) | 240 | DK. BRONZE | | | | | |
| ⑥ N1 | DEVINE (OR EQUAL) | BAB1-100MH-DBZ | 1 | 100W ED-17 MH(COMP/UV) | 240 | DK. BRONZE | | | | | |
| ⑥ N2 | HYOREL (OR EQUAL) | Z100MH100 240V HF/7M SM B2 B0 LC | 1 | 100W MH | 240 | DK. BRONZE | | | | | |
| ⑥ N4 | DEVINE (OR EQUAL) | LMS-601 | 1 | PLC-26 3500 K | 120 | CAST ALLUM. DK. BRONZE | RECESS/CONC | | | | WITH COLD WEATHER BALLAST AND CAPABLE OF WITHSTANDING 10 PSL |
| ⑥ N5 | McPHILBEN (OR EQUAL) | 941 U 131F LV0G 120 | 1 | PL-S 13W/35 | 120 | | RECESS/CONC | | | | WITH 0' ELECTRONIC BALLAST COLOR AS SELECTED BY ARCHITECT. |
| ⑥ P | KIM (OR EQUAL) | 1A/075800/175MH/0/BL-E/PB520-6188 | 1 | 175W MH | 240 | BLACK | | | | | |

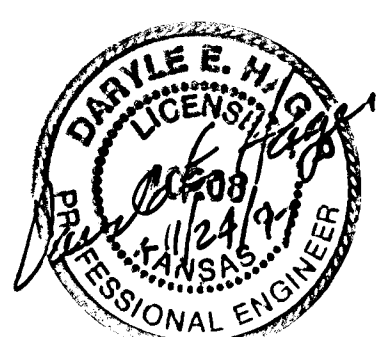
- ① PROVIDE EACH FIXTURE WITH (3) FILTERS. (1) CLEAR, (2) COLORED. (COLORS TO BE SELECTED BY ARCHITECT).
- ② PROVIDE EACH FIXTURE WITH (3) FILTERS. (1) CLEAR, (2) COLORED. (COLORS TO BE SELECTED BY ARCHITECT).
- ③ PROVIDE POLE WITH HAND HOLE AND DR-GFI OPTION - RECEPTACLE SHALL BE EQUAL TO P & S #2091S.
- ④ METAL HALIDE LAMPS SHALL BE EQUAL TO PHILLIPS PROTECTED MASTER COLOR.
- ⑤ APPROVED EQUAL: U.S. ARCHITECTURAL LIGHTING # 448S PL13120EB. (COLOR AS SELECTED BY ARCHITECT).
- ⑥ MANUFACTURERS LISTED IN THIS SCHEDULE OR EQUALS APPROVED BY WRITTEN ADDENDUM WILL BE THE ONLY APPROVED MANUFACTURERS TO BID THE LIGHTING FIXTURES FOR THIS PROJECT. CONTRACTORS AND SUPPLIERS USING PRICING FROM MANUFACTURERS NOT LISTED ON SCHEDULE OR BY ADDENDUM DO SO AT THEIR OWN RISK.

SYMBOL LIST

| SYMBOL | DESCRIPTION | MOUNTING |
|--------|--|----------------|
| ⊙ A | LIGHT FIXTURE & FIXTURE LETTER | CEILING |
| ⊙ A | LIGHT FIXTURE & FIXTURE LETTER | WALL |
| WP | WEATHERPROOF | |
| AFF | ABOVE FINISHED FLOOR | |
| U.O.N. | UNLESS OTHERWISE NOTED | |
| ⊕ | GROUND FAULT DUPLEX RECEPTACLE | 1'-5"A.F.F. |
| ⊕ | SPECIAL DEVICE (AS NOTED) | |
| ⊠ | JUNCTION BOX | |
| ⊠ | FUSTAT BUSS #SSY | |
| ⊠ | BRANCH CIRCUIT PANEL & PANEL DESIG. | 6'-0" TO TOP |
| ⊠ | ELECTRICAL DISTRIBUTION EQUIPMENT | |
| ⊠ | FEEDER DESIGNATION | |
| ⊠ | CONDUIT RUN 2 #12 & 1 #12 GRD. -1/2"C. | CEIL./WALL |
| ⊠ | CONDUIT RUN 2 #12 & 1 #12 GRD. -3/4"C. | EARTH/CONCRETE |
| ⊠ | CONDUIT RUN 2 CIRCUITS, 3 #12 & 1 #12 GRD. -3/4"C. | EARTH/CONCRETE |
| ⊠ | CONDUIT RUN PARTIAL CIRCUIT | |
| ⊠ | SEE GENERAL NOTE 6 | |
| ⊠ | CONDUIT RUN TWO (2) CIRCUITS | CEILING/WALL |
| ⊠ | PHASE CONDUCTORS (#12 U.O.N.) | |
| ⊠ | NEUTRAL CONDUCTOR (#12 U.O.N.) | |
| ⊠ | SWITCH LEADS (#12 U.O.N.) | |
| ⊠ | GROUND CONDUCTOR (#12 U.O.N.) | |

GENERAL NOTES

1. ALL ELECTRICAL WORK SHALL COMPLY WITH THE LATEST EDITION OF THE NATIONAL ELECTRICAL CODE (NEC) & THE AMERICANS WITH DISABILITY ACT (ADA).
2. REFER TO RELATED ARCHITECTURAL AND STRUCTURAL DRAWINGS FOR RELATED INFORMATION.
3. REFER TO THE SPECIFICATIONS FOR DATA NOT ON THE DRAWINGS.
4. COORDINATE OUTLET BOX LOCATIONS WITH MASONRY TO MINIMIZE CUTTING OF BRICK OR BLOCK.
5. ALL MOUNTING HEIGHTS TO CENTERLINE OF ITEM UNLESS OTHERWISE NOTED. VERIFY ALL OUTLET LOCATIONS ON THE JOB PRIOR TO ROUGH-IN.
6. CONDUIT RUN W/CONDUCTORS AS INDICATED & GROUND WIRE SIZED PER N.E.C. 250-95. CONDUIT SIZE AS REQUIRED.
7. SEPARATE GREEN GROUND CONDUCTOR SHALL BE ROUTED IN ALL CONDUITS WITH ALL PHASE CONDUCTORS.
8. WHEN INCREASED CONDUCTOR SIZES ARE SHOWN ON THE PLANS, THE LARGER CONDUCTOR SIZE SHALL BE USED THROUGHOUT THE LENGTH OF THE CIRCUIT, INCLUDING NEUTRAL AND GROUND.



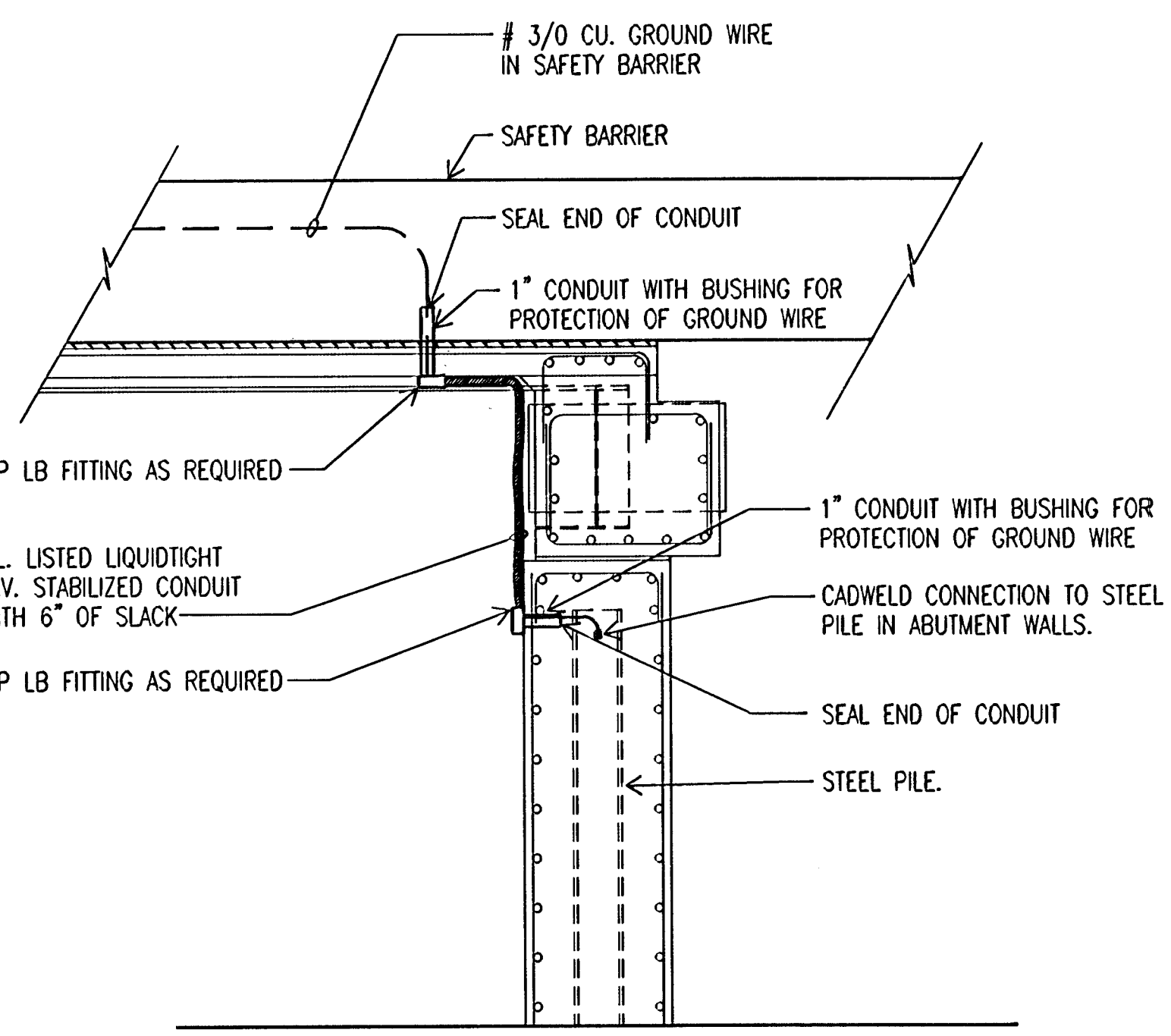
CITY OF WICHITA, KANSAS
MICHAEL E. LINDEBAK, P.E. - CITY ENGINEER
DOUGLAS AVENUE BRIDGE
OVER ARKANSAS RIVER

ELECTRICAL SCHEDULES

CITY OF WICHITA PROJECT NO. 472-82721

PROFESSIONAL ENGINEERING CONSULTANTS, P.A.
ENGINEERS
WICHITA, KANSAS

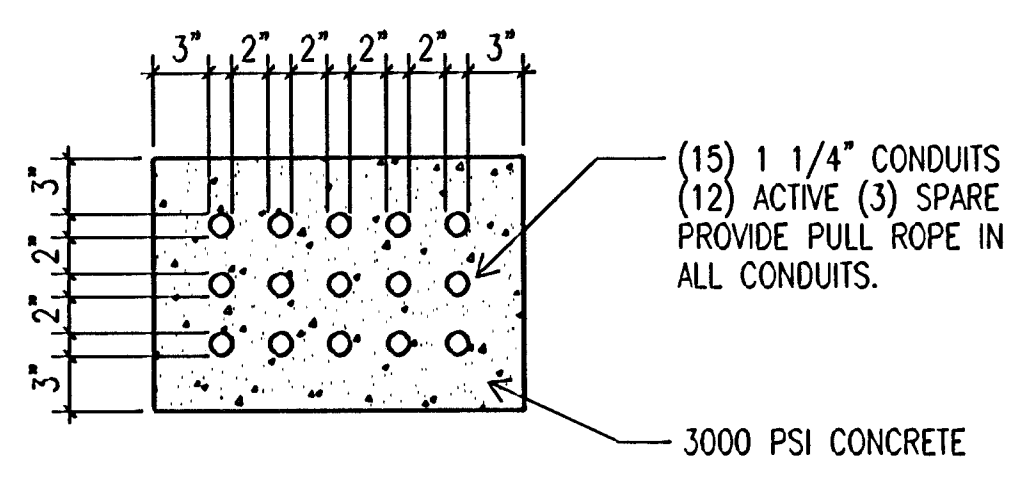
| | | | |
|-------------|-----|------------|------------|
| Designed by | DCG | Checked by | DCG |
| Drawn by | MOB | Date | SEPT. 1997 |
| | | Job No. | 95088-4 |



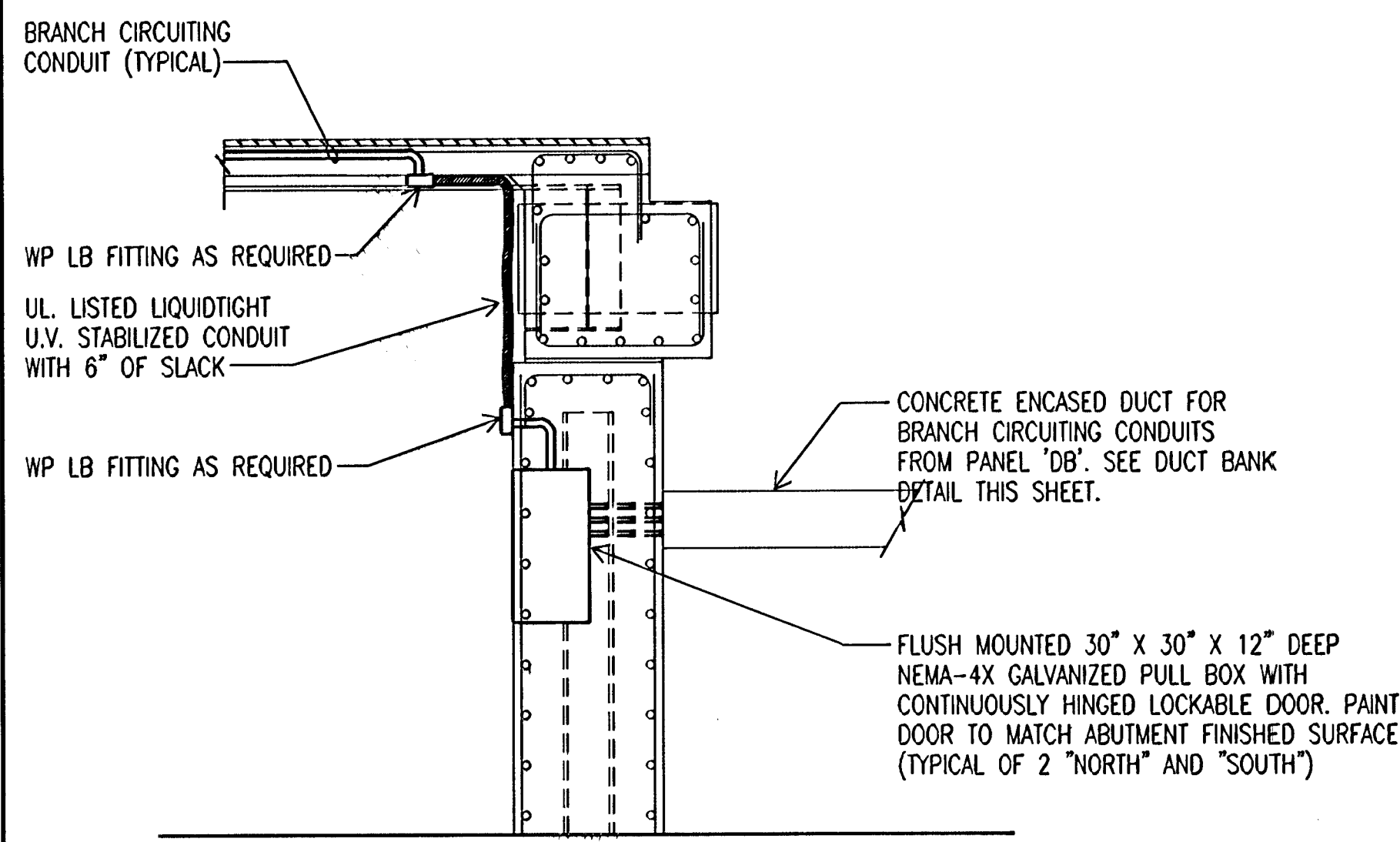
1 GROUND WIRE CONNECTION TO STEEL PILE
E1 E1 N.T.S. (TYPICAL OF 4)

NOTES:

1. PROVIDE PLASTIC CONDUIT SPACERS MAXIMUM 5'-0" ON CENTER IN ENTIRE DUCT BANK RUN.
2. PROVIDE WARNING TAPE ABOVE DUCT BANK. SEE THE SPECIFICATIONS.
3. PROVIDE COMPACTED BACKFILL ABOVE DUCT BANK PER THE SPECIFICATIONS.
4. SEE THE SPECIFICATIONS FOR SLOPE REQUIREMENTS OF DUCT BANKS.



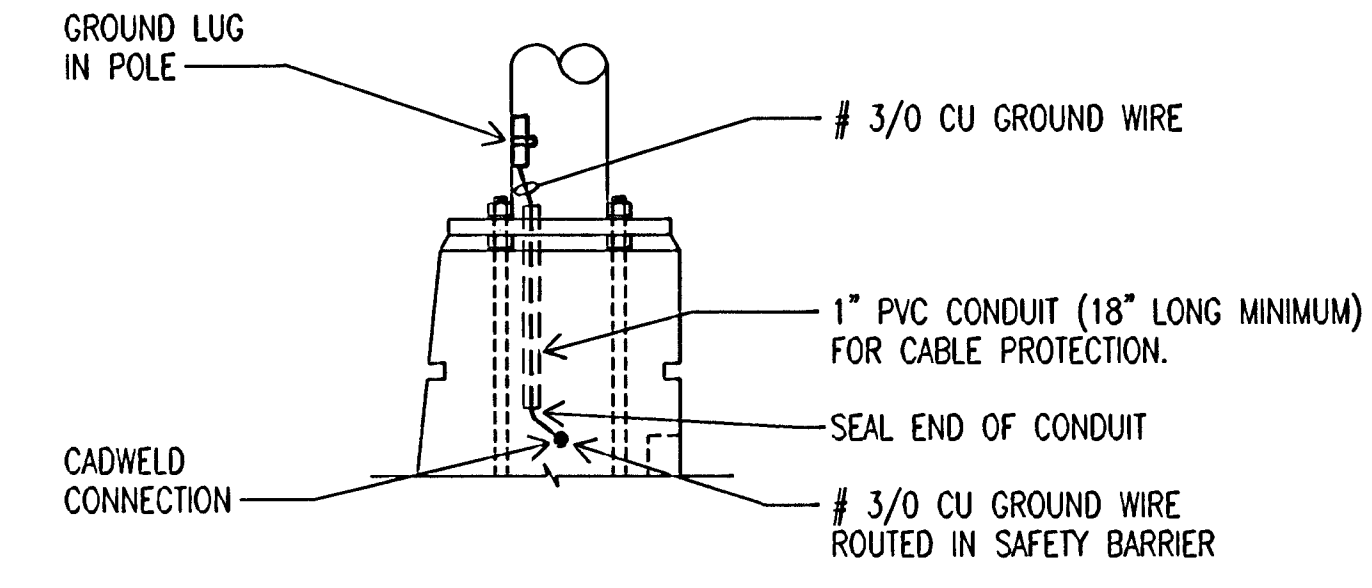
3 BRANCH CIRCUIT DUCT BANK DETAIL
E1 E1 N.T.S.



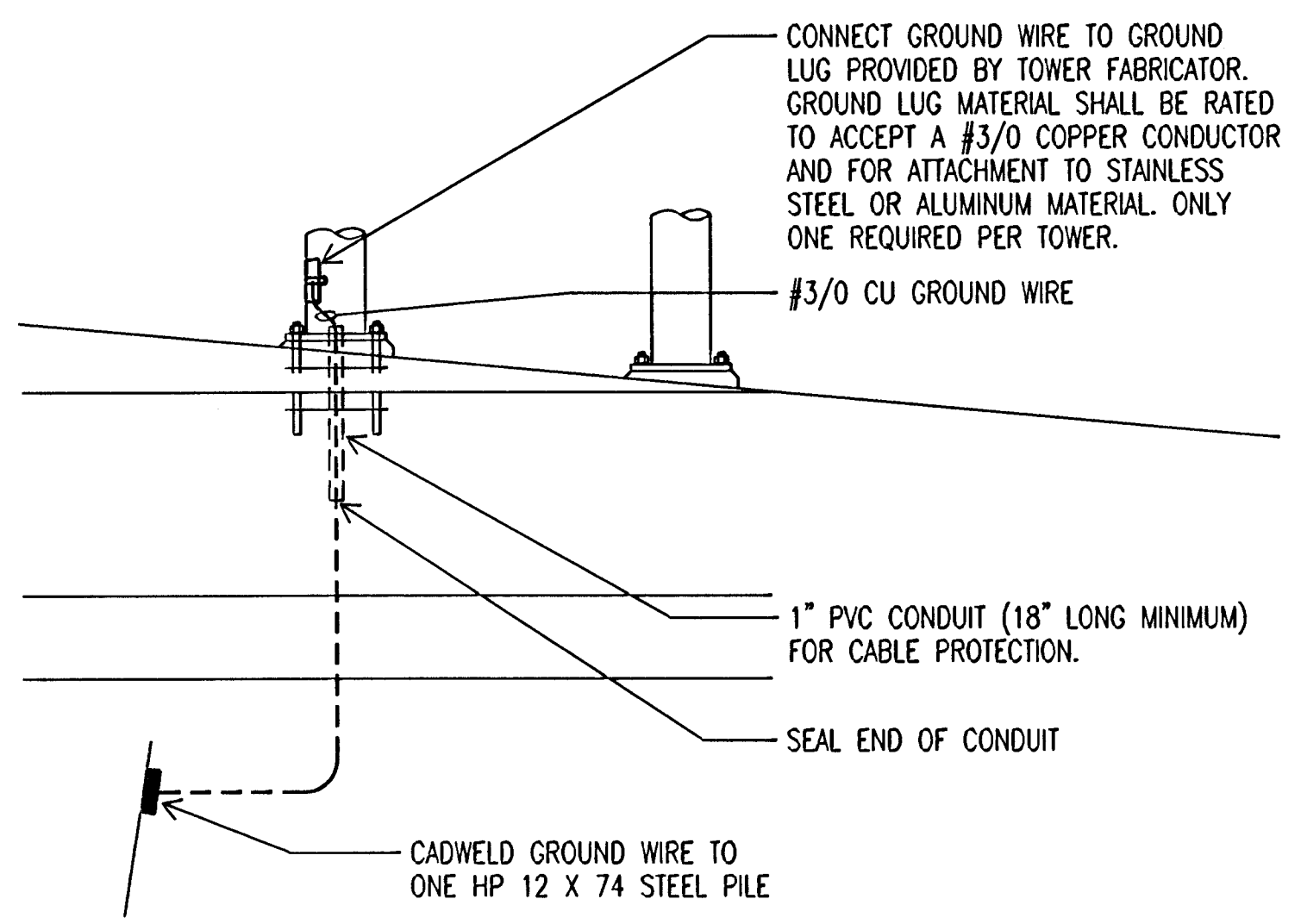
2 PULL BOX AND FLEXIBLE CONNECTION DETAIL
E1 E1 N.T.S.

NOTES

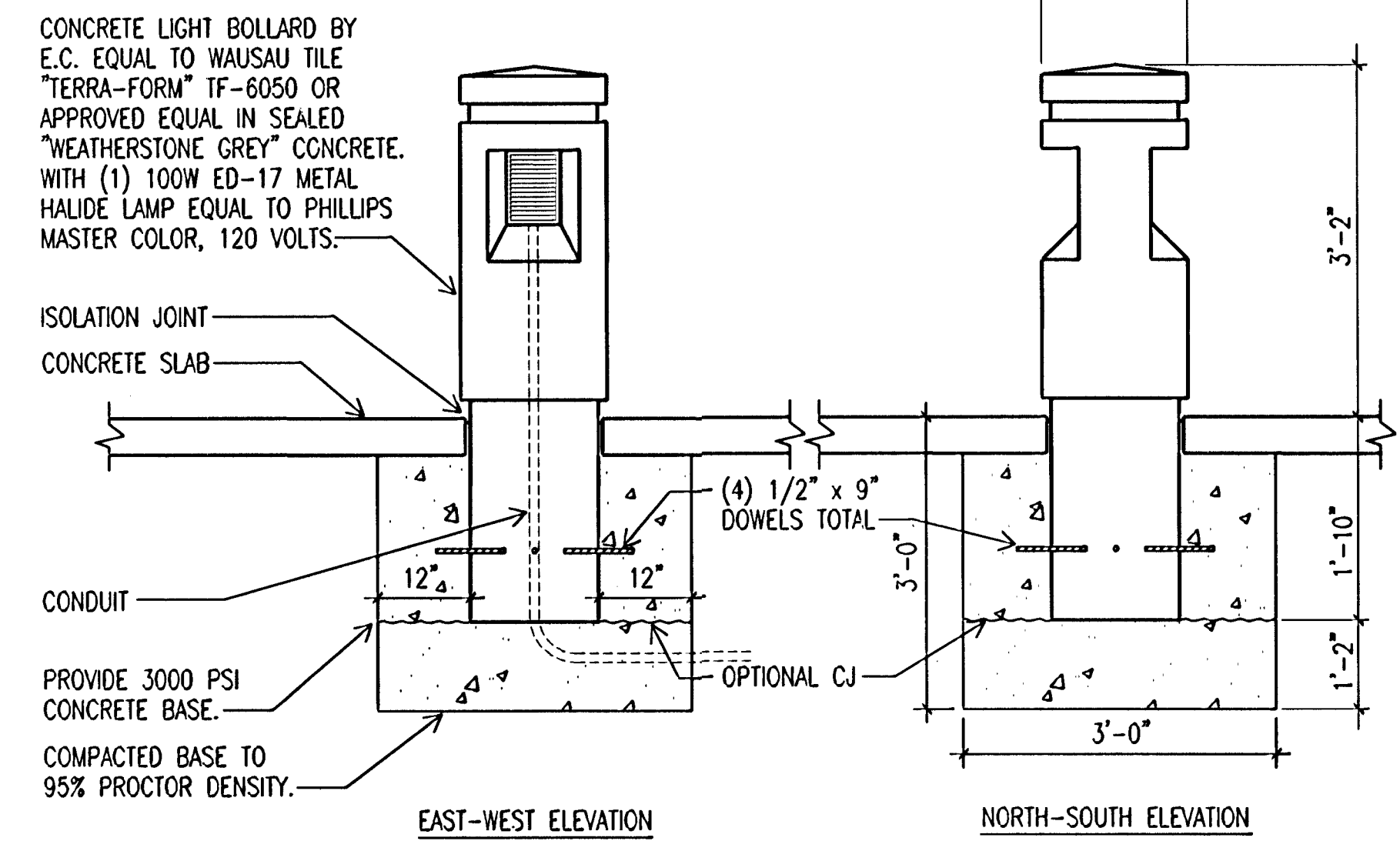
1. CONCRETE ENCASED DUCT ENTRANCE ONLY AT SOUTH PULL BOX.
2. PROVIDE SIMILAR FLEXIBLE CONNECTIONS FOR ALL CONDUITS PASSING FROM ONE ISOLATED STRUCTURE TO THE OTHER. LEAVE 6" OF SLACK MINIMUM TO ALLOW FOR MOVEMENT OF STRUCTURES.
3. PROVIDE (1) 1-1/4" EMPTY CONDUIT WITH PULL STRING BETWEEN NORTH AND SOUTH PULL BOXES IN ADDITION TO THE REQUIRED BRANCH CIRCUITS CONDUITS.
4. ALL SPLICES SHALL BE WATERTIGHT AND MADE WITH SHRINK WRAP MATERIALS.



4 GROUNDING DETAIL FOR FIXTURE 'P' POLES
E1 E1 N.T.S.



5 TOWER GROUNDING DETAIL (TYPICAL OF 8)
E1 E1 N.T.S.



6 TYP. LIGHT BOLLARD
E1 E3 N.T.S.

LIGHTS TO ILLUMINATE UP & DOWN STATION (APPROX EAST & WEST)

| | |
|--------------------|--|
| DATE | |
| BY | |
| PLAN SURVEYED | |
| NOTE BOOK PLOTTED | |
| ALIGNMENT CHECKED | |
| RT. OF WAY CHECKED | |