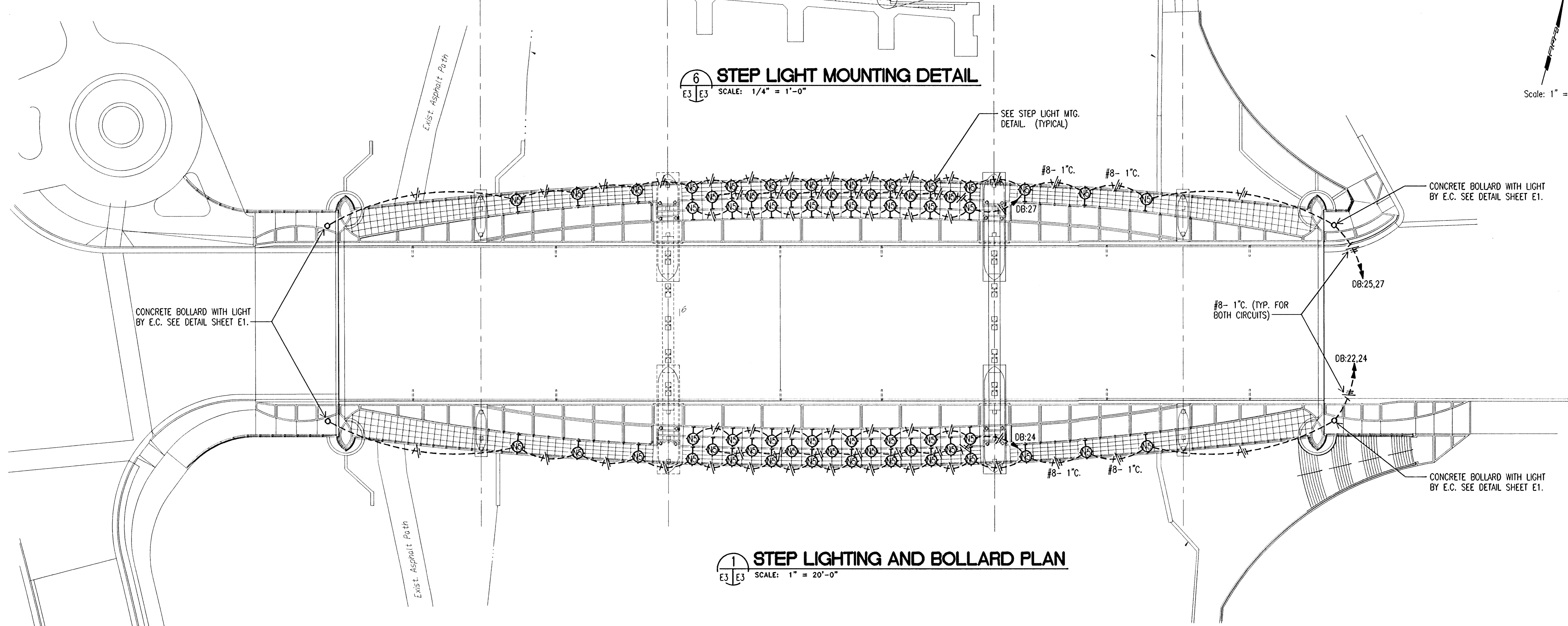
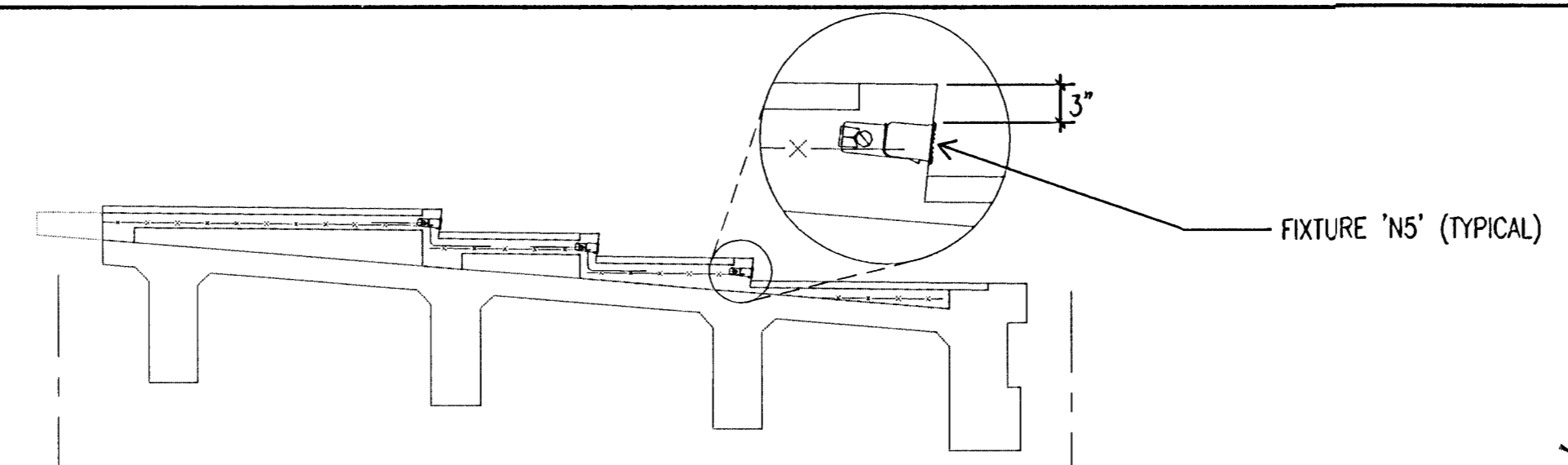


Scale: 1" = 20'

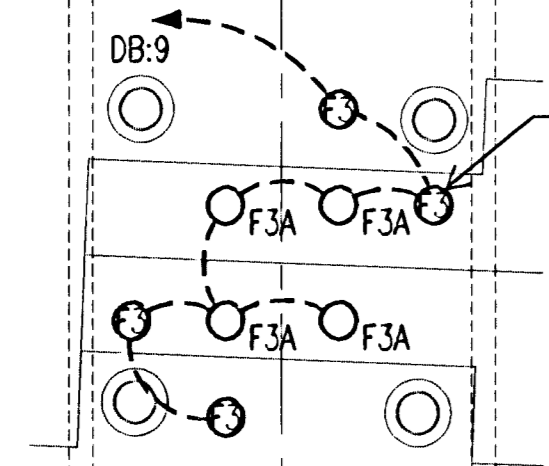
6 STEP LIGHT MOUNTING DETAIL
 SCALE: 1/4" = 1'-0"



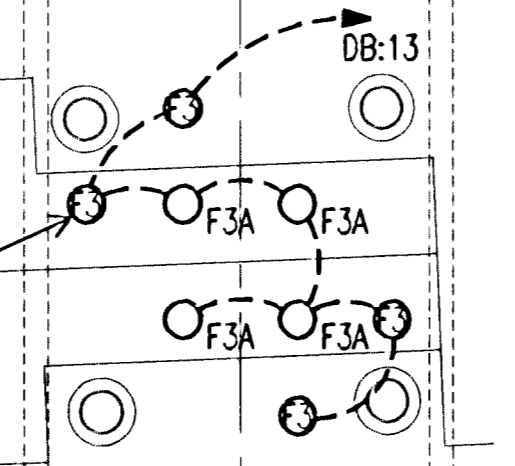
1 STEP LIGHTING AND BOLLARD PLAN
 SCALE: 1" = 20'-0"

PLAN	SURVEYED	DATE
NOTE BOOK	PLOTTED	
NO.	ALIGNMENT CHECKED	
	RT. OF WAY CHECKED	

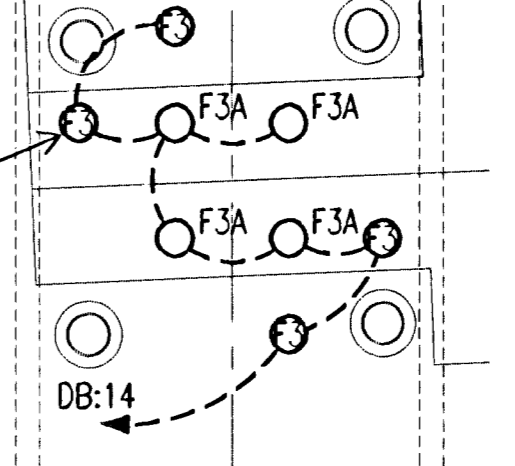
DSNR: DCG OPER: TRK SCALE: 1"=20'-0"
 E:\1995\95088\004\DSBE3.DWG 11-14-1997 6:22:51 pm



INDIVIDUAL FIXTURE DRAINS SHALL BE 3/4" DIA. PVC PROVIDED IN PIER DIAPHRAM SEE SHEET C66 FOR DETAIL & DRAIN OUTFALL LOCATIONS. (TYPICAL FOR 8 FIXTURES PER TOWER LOCATION).



INDIVIDUAL FIXTURE DRAINS SHALL BE 3/4" DIA. PVC PROVIDED IN PIER DIAPHRAM SEE SHEET C66 FOR DETAIL & DRAIN OUTFALL LOCATIONS. (TYPICAL FOR 8 FIXTURES PER TOWER LOCATION).

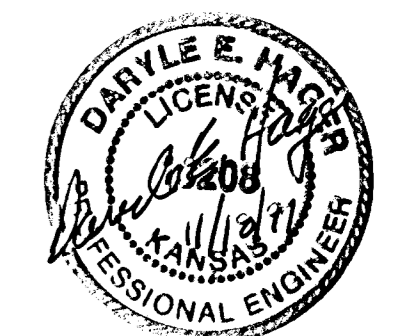


2 TOWER LIGHTING PLAN
 SCALE: 1/4" = 1'-0" N.E. LOCATION

3 TOWER LIGHTING PLAN
 SCALE: 1/4" = 1'-0" N.W. LOCATION

4 TOWER LIGHTING PLAN
 SCALE: 1/4" = 1'-0" S.W. LOCATION

5 TOWER LIGHTING PLAN
 SCALE: 1/4" = 1'-0" S.E. LOCATION



NOTES:

- MINIMUM CONDUIT SIZE FOR ALL BRANCH CIRCUITS SHALL BE 3/4". HOMERUN CONDUIT SIZES SHOWN INDICATES SIZE OF CONDUIT UP TO NORTH PULL BOX. SEE DUCT BANK DETAIL SHEET E1 FOR CONDUIT SIZE FROM NORTH PULL BOX TO PANEL.
- ALL SPLICES SHALL BE WATER TIGHT AND MADE WITH SHRINK WRAP MATERIALS.

CITY OF WICHITA, KANSAS
 MICHAEL E. LINDEBAK, P.E. - CITY ENGINEER
 DOUGLAS AVENUE BRIDGE
 OVER ARKANSAS RIVER

STEP LIGHTING PLAN

CITY OF WICHITA PROJECT NO. 472-82721

PROFESSIONAL ENGINEERING CONSULTANTS, P.A.
 ENGINEERS
 WICHITA, KANSAS

Designed by	DCG	Checked by	DCG
Drawn by	MOB	Date	SEPT. 1997
		Job No.	95088-4