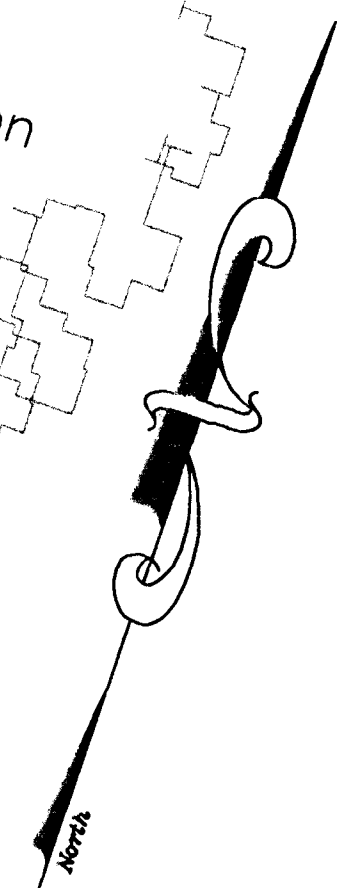
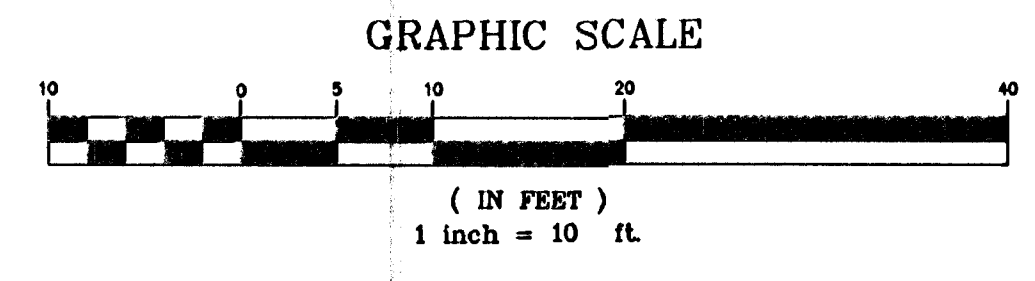
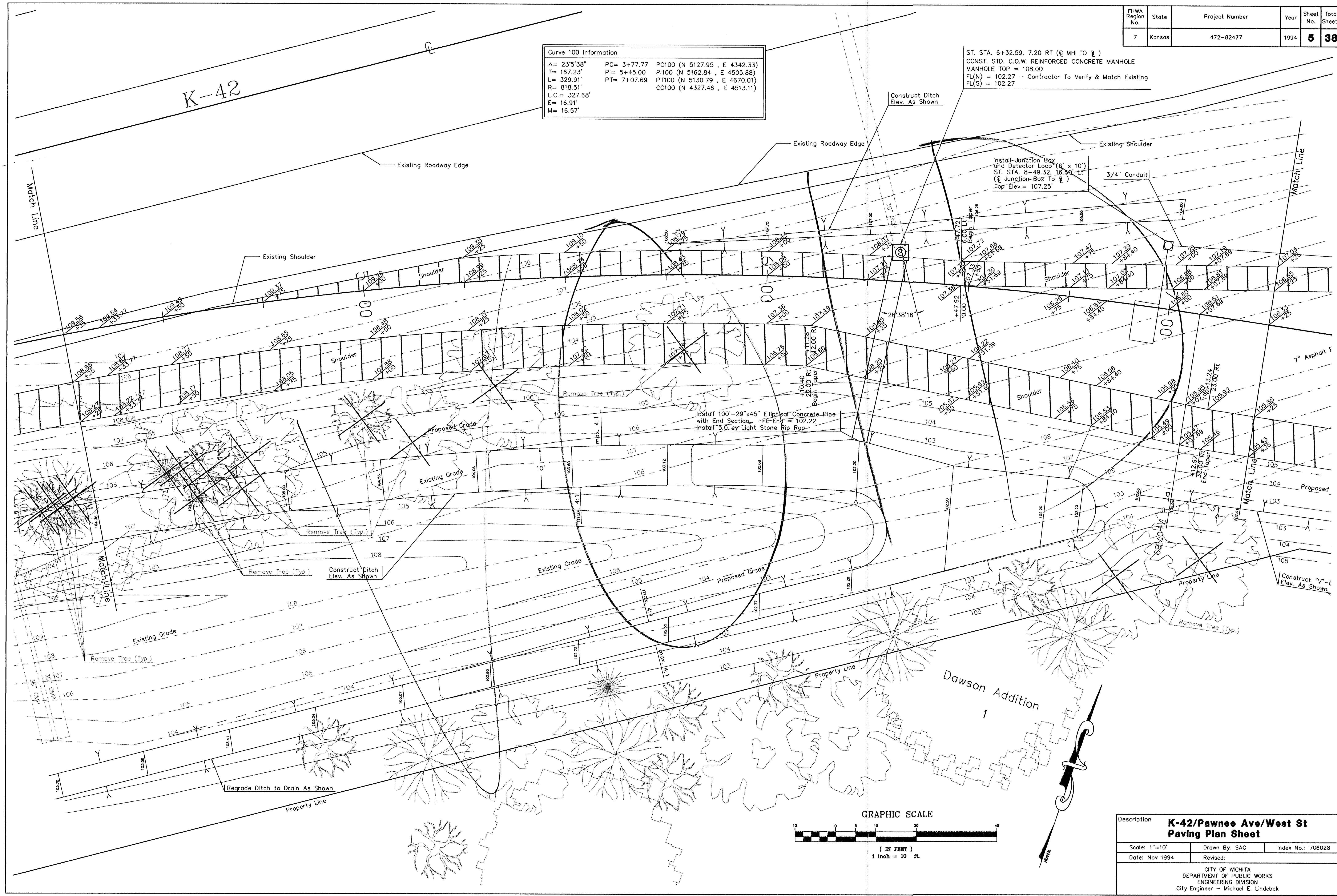


Curve 100 Information
 $\Delta = 23^{\circ}5'38''$ PC = 3+77.77 PC100 (N 5127.95, E 4342.33)
 $T = 167.23'$ PI = 5+45.00 PI100 (N 5162.84, E 4505.88)
 $L = 329.91'$ PT = 7+07.69 PT100 (N 5130.79, E 4670.01)
 $R = 818.51'$ CC100 (N 4327.46, E 4513.11)
 $L.C. = 327.68'$
 $E = 16.91'$
 $M = 16.57'$

ST. STA. 6+32.59, 7.20 RT (@ MH TO R)
 CONST. STD. C.O.W. REINFORCED CONCRETE MANHOLE
 MANHOLE TOP = 108.00
 FL(N) = 102.27 - Contractor To Verify & Match Existing
 FL(S) = 102.27



Description		
K-42/Pawnee Ave/West St Paving Plan Sheet		
Scale: 1"=10'	Drawn By: SAC	Index No.: 706028
Date: Nov 1994	Revised:	
CITY OF WICHITA DEPARTMENT OF PUBLIC WORKS ENGINEERING DIVISION City Engineer - Michael E. Lindebak		