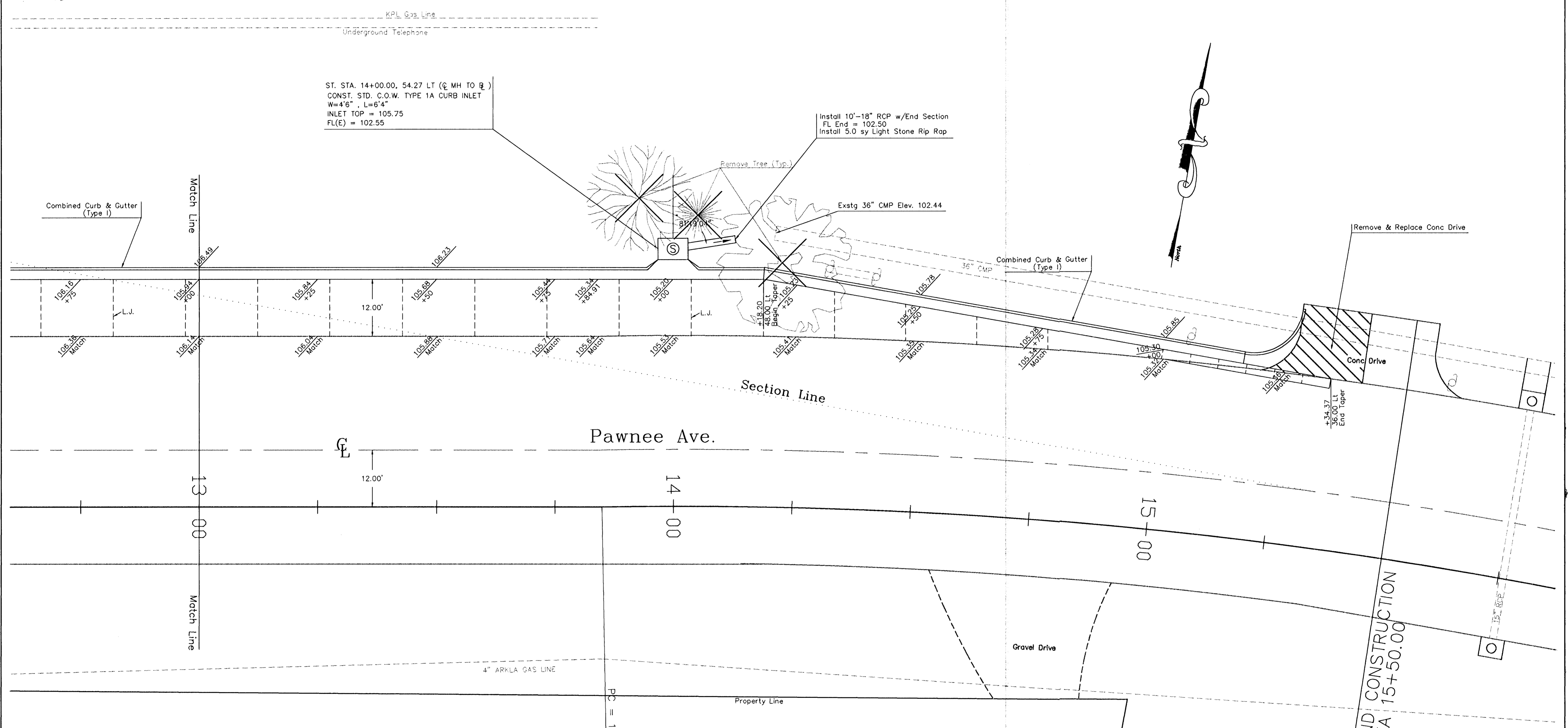


FHWA Region No.	State	Project Number	Year	Sheet No.	Total Sheets
7	Kansas	472-82477	1994	8	38



ST. STA. 14+00.00, 54.27 LT (☉ MH TO ☉)
 CONST. STD. C.O.W. TYPE 1A CURB INLET
 W=4'6" , L=6'4"
 INLET TOP = 105.75
 FL(E) = 102.55

Install 10'-18" RCP w/End Section
 FL End = 102.50
 Install 5.0 sy Light Stone Rip Rap

Remove Tree (Typ.)

Exstg 36" CMP Elev. 102.44

36" CMP Combined Curb & Gutter (Type I)

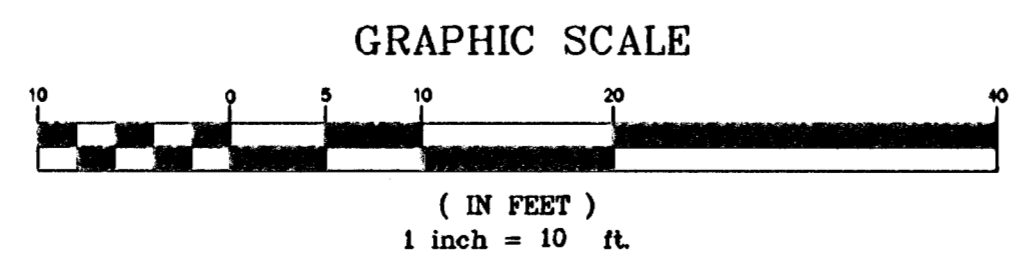
Remove & Replace Conc Drive

+34.37
 36.00 LT
 End Taper

Pawnee Ave.

3 Westport Industrial Park
 5th Adn.

Curve 200 Information			
Δ = 131°08'	PC = 13+84.91	PC200 (N 5000.98 , E 5334.68)	
T = 114.16'	PI = 14+99.07	PI200 (N 4982.00 , E 5431.84)	
L = 227.29'	PT = 16+12.20	PT200 (N 4935.80 , E 5551.89)	
R = 980.21'		CC200 (N 4035.84 , E 5163.44)	
L.C. = 226.78'			
E = 6.62'			
M = 6.58'			



Description K-42/Pawnee Ave/West St Paving Plan Sheet		
Scale: 1"=10'	Drawn By: SAC	Index No.: 706028
Date: Nov 1994	Revised:	
CITY OF WICHITA DEPARTMENT OF PUBLIC WORKS ENGINEERING DIVISION City Engineer - Michael E. Lindebak		