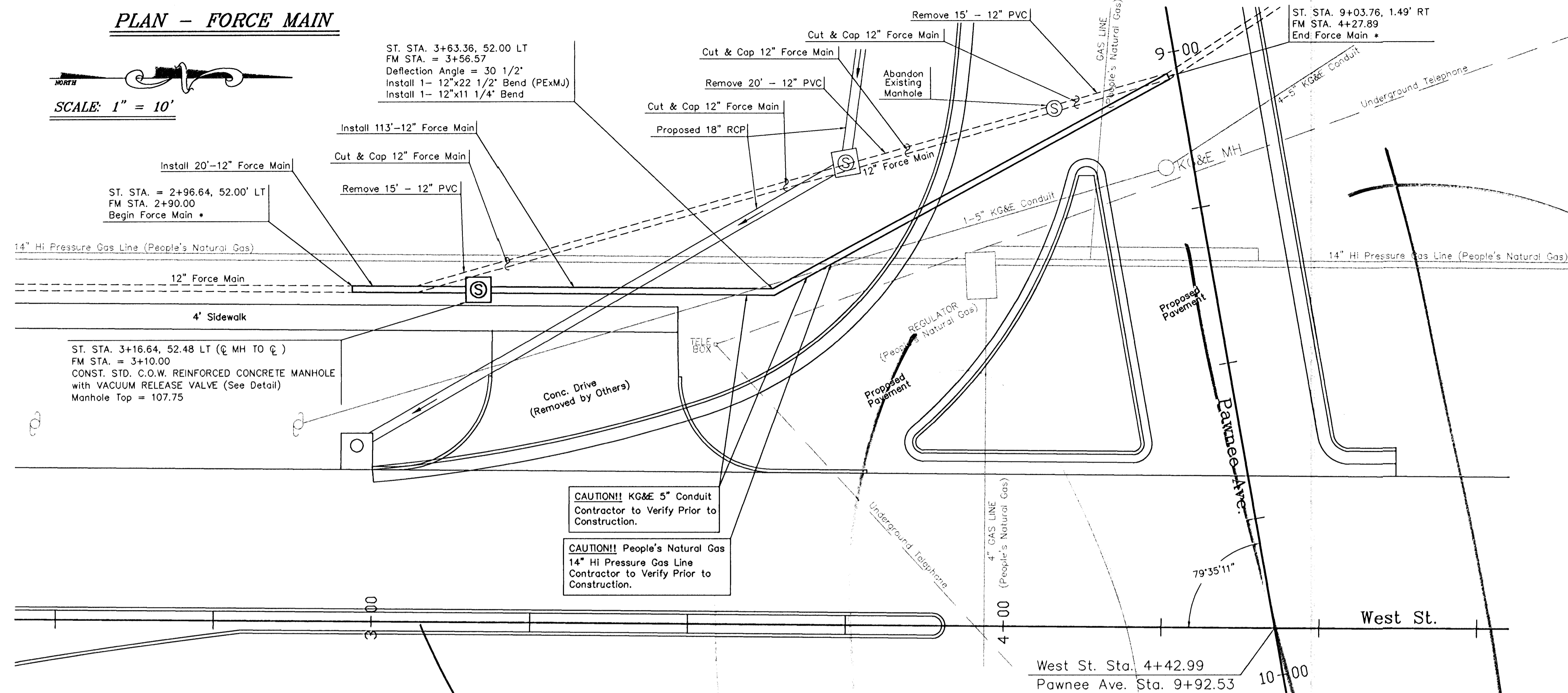
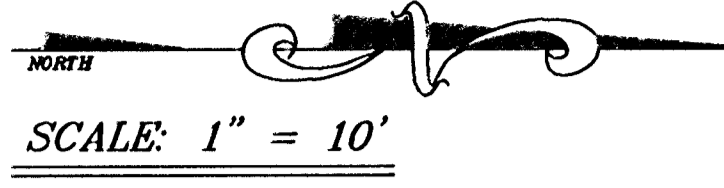


**PLAN - FORCE MAIN**

FHWA Region No.	State	Project Number	Year	Sheet No.	Total Sheets
7	Kansas	472-82477	1994	10	38



B.M.#1 - C.O.W. Benchmark Disc, on centerline of West Street and 49.23' north of Quarter Section Corner West St STA 5+89.55, 0.75' Lt. Elev. = 109.98

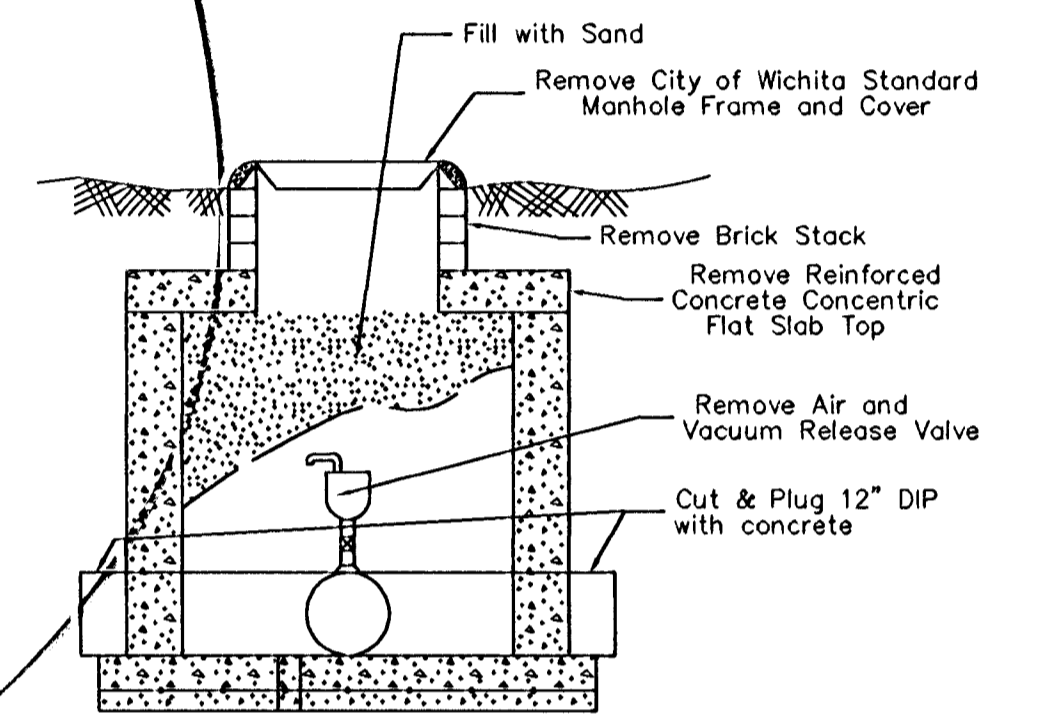
B.M.#2 - "□" Cut in centerline of Northbound K-42 on west R.O.W. line extended. West St STA 6+37.73, 50' Lt. Elev. = 109.61

The Contractor, when required, shall provide for the transfer of flow around the section or sections of pipe that are to be constructed. The bypass shall be made by diversion of the flow at an existing upstream access point and pumping the flow into a downstream access point or adjacent system. The pump and bypass lines shall be of adequate capacity and size to handle the flow. The proposed bypassing system shall be as approved in advance by the Engineer. The approval of the bypassing system in advance by the Engineer shall in no way relieve the Contractor of his responsibility and/or liability.

The Contractor shall make arrangements as necessary with adequate notification to involved property owners and/or tenants, to insure that waste water will not be discharged from building sewer lines during the installation of the liner pipe or until such time building sewers are reconnected to the liner pipe and functional.

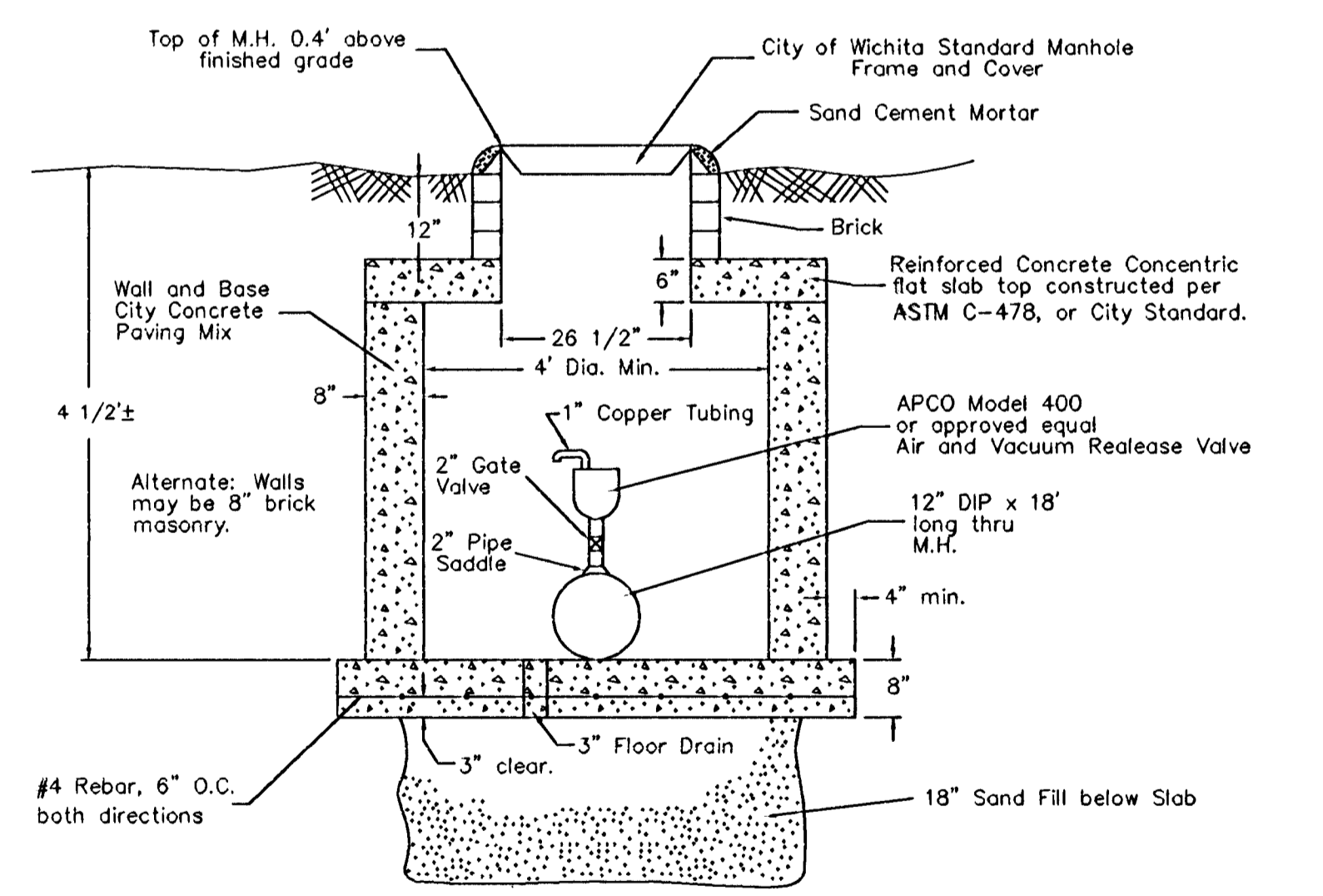
**CAUTION!!** KG&E 5" Conduit Contractor to Verify Prior to Construction.

**CAUTION!!** People's Natural Gas 14" HI Pressure Gas Line Contractor to Verify Prior to Construction.



**Abandon Manhole Detail**

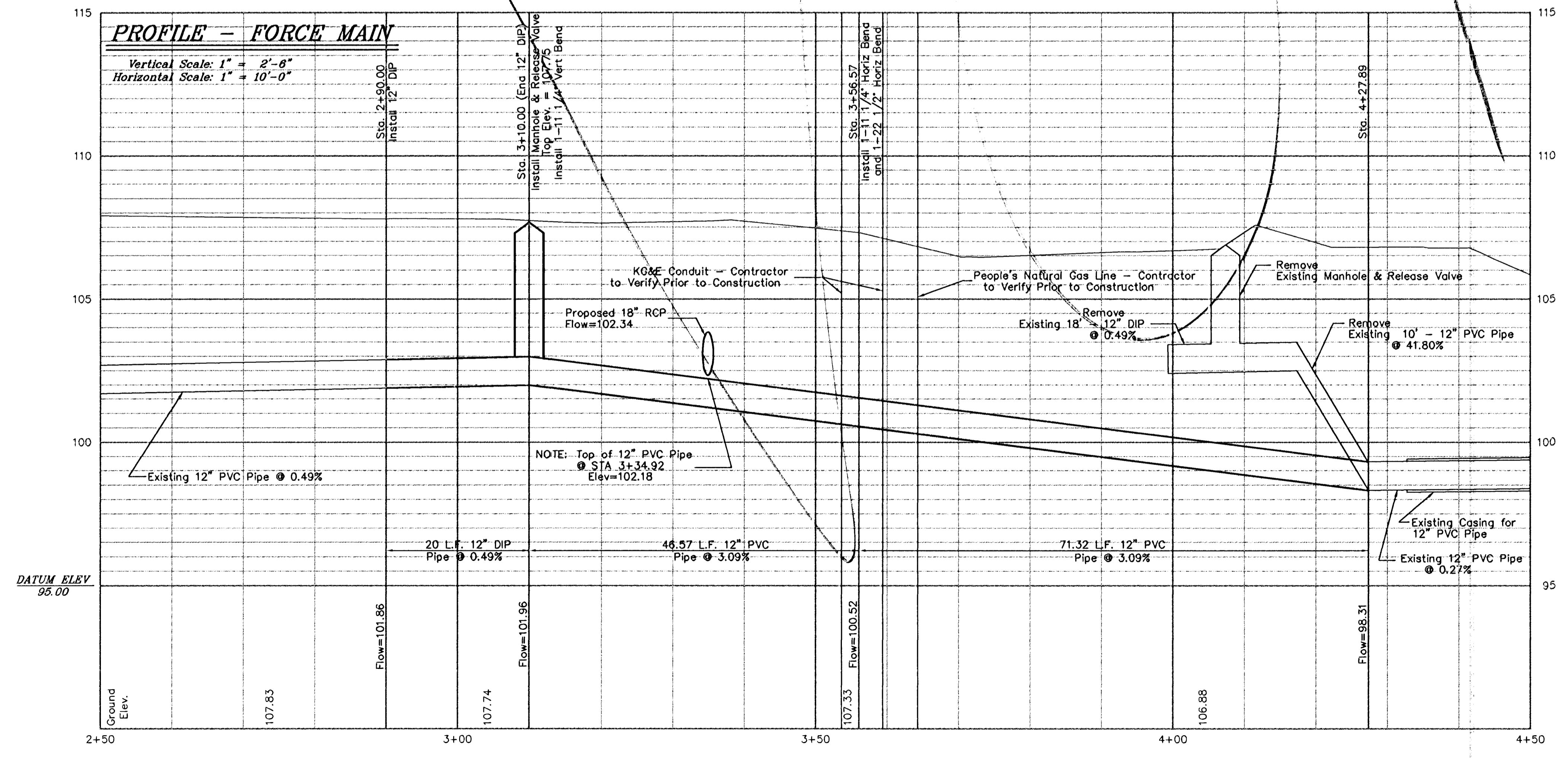
Contractor to Reuse Existing Air & Vacuum Release Assembly. Contractor to Coordinate Construction With James Tush, Supt. of Sewage Treatment Phone (316) 529-9900



**Air & Vacuum Release Detail**

**PROFILE - FORCE MAIN**

Vertical Scale: 1" = 2'-6"  
Horizontal Scale: 1" = 10'-0"



Description	<b>K-42/Pawnee Ave/West St Force Main Plan Sheet</b>	
Scale: 1"=10'	Drawn By: SAC	Index No.: 706028
Date: Nov 1994	Revised: Apr 95	
CITY OF WICHITA DEPARTMENT OF PUBLIC WORKS ENGINEERING DIVISION City Engineer - Michael E. Lindbak		