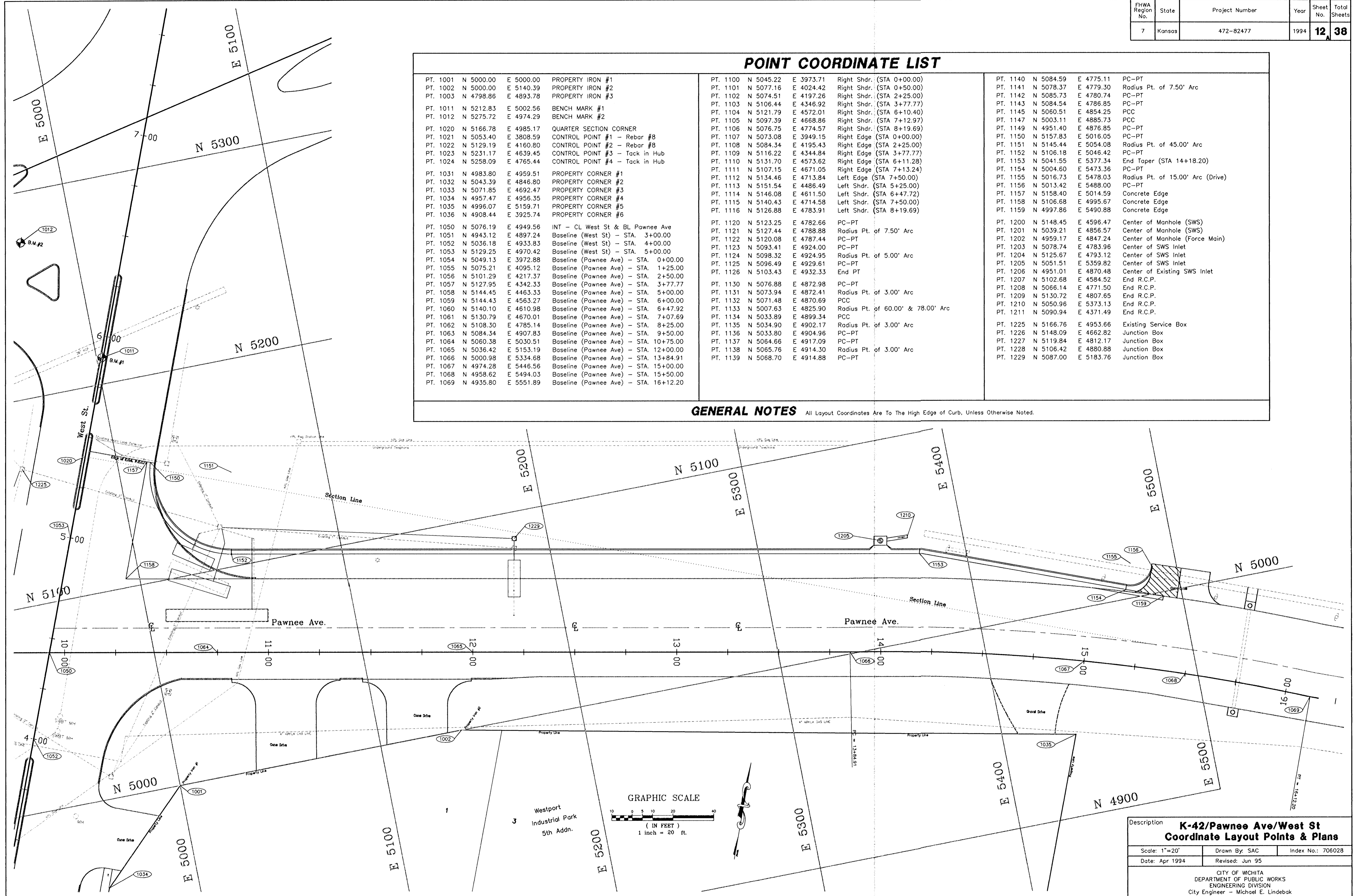


POINT COORDINATE LIST

PT. 1001	N 5000.00	E 5000.00	PROPERTY IRON #1	PT. 1100	N 5045.22	E 3973.71	Right Shdr. (STA 0+00.00)	PT. 1140	N 5084.59	E 4775.11	PC-PT
PT. 1002	N 5000.00	E 5140.39	PROPERTY IRON #2	PT. 1101	N 5077.16	E 4024.42	Right Shdr. (STA 0+50.00)	PT. 1141	N 5078.37	E 4779.30	Radius Pt. of 7.50' Arc
PT. 1003	N 4798.86	E 4893.78	PROPERTY IRON #3	PT. 1102	N 5074.51	E 4197.26	Right Shdr. (STA 2+25.00)	PT. 1142	N 5085.73	E 4780.74	PC-PT
PT. 1011	N 5212.83	E 5002.56	BENCH MARK #1	PT. 1103	N 5106.44	E 4346.92	Right Shdr. (STA 3+77.77)	PT. 1143	N 5084.54	E 4786.85	PC-PT
PT. 1012	N 5275.72	E 4974.29	BENCH MARK #2	PT. 1104	N 5121.79	E 4572.01	Right Shdr. (STA 6+10.40)	PT. 1144	N 5060.51	E 4854.25	PCC
PT. 1020	N 5166.78	E 4985.17	QUARTER SECTION CORNER	PT. 1105	N 5097.39	E 4668.86	Right Shdr. (STA 7+12.97)	PT. 1147	N 5003.11	E 4885.73	PCC
PT. 1021	N 5053.40	E 3808.59	CONTROL POINT #1 - Rebar #8	PT. 1106	N 5076.75	E 4774.57	Right Shdr. (STA 8+19.69)	PT. 1149	N 4951.40	E 4876.85	PC-PT
PT. 1022	N 5129.19	E 4160.80	CONTROL POINT #2 - Rebar #8	PT. 1107	N 5073.08	E 3949.15	Right Edge (STA 0+00.00)	PT. 1150	N 5157.83	E 5016.05	PC-PT
PT. 1023	N 5231.17	E 4639.45	CONTROL POINT #3 - Tack in Hub	PT. 1108	N 5084.34	E 4195.43	Right Edge (STA 2+25.00)	PT. 1151	N 5145.44	E 5054.08	Radius Pt. of 45.00' Arc
PT. 1024	N 5258.09	E 4765.44	CONTROL POINT #4 - Tack in Hub	PT. 1109	N 5116.22	E 4344.84	Right Edge (STA 3+77.77)	PT. 1152	N 5106.18	E 5046.42	PC-PT
PT. 1031	N 4983.80	E 4959.51	PROPERTY CORNER #1	PT. 1110	N 5131.70	E 4573.62	Right Edge (STA 6+11.28)	PT. 1153	N 5041.55	E 5377.34	End Taper (STA 14+18.20)
PT. 1032	N 5043.39	E 4846.80	PROPERTY CORNER #2	PT. 1111	N 5107.15	E 4671.05	Right Edge (STA 7+13.24)	PT. 1154	N 5004.60	E 5473.36	PC-PT
PT. 1033	N 5071.85	E 4692.47	PROPERTY CORNER #3	PT. 1112	N 5134.46	E 4713.84	Left Edge (STA 7+50.00)	PT. 1155	N 5016.73	E 5478.03	Radius Pt. of 15.00' Arc (Drive)
PT. 1034	N 4957.47	E 4956.35	PROPERTY CORNER #4	PT. 1113	N 5151.54	E 4486.49	Left Shdr. (STA 5+25.00)	PT. 1156	N 5013.42	E 5488.00	PC-PT
PT. 1035	N 4996.07	E 5159.71	PROPERTY CORNER #5	PT. 1114	N 5146.08	E 4611.50	Left Shdr. (STA 6+47.72)	PT. 1157	N 5158.40	E 5014.59	Concrete Edge
PT. 1036	N 4908.44	E 3925.74	PROPERTY CORNER #6	PT. 1115	N 5140.43	E 4714.58	Left Shdr. (STA 7+50.00)	PT. 1158	N 5106.68	E 4995.67	Concrete Edge
PT. 1050	N 5076.19	E 4949.56	INT - CL West St & BL Pawnee Ave	PT. 1116	N 5126.88	E 4783.91	Left Shdr. (STA 8+19.69)	PT. 1159	N 4997.86	E 5490.88	Concrete Edge
PT. 1051	N 4943.12	E 4897.24	Baseline (West St) - STA. 3+00.00	PT. 1120	N 5123.25	E 4782.66	PC-PT	PT. 1200	N 5148.45	E 4596.47	Center of Manhole (SWS)
PT. 1052	N 5036.18	E 4933.83	Baseline (West St) - STA. 4+00.00	PT. 1121	N 5127.44	E 4788.88	Radius Pt. of 7.50' Arc	PT. 1201	N 5039.21	E 4856.57	Center of Manhole (SWS)
PT. 1053	N 5129.25	E 4970.42	Baseline (West St) - STA. 5+00.00	PT. 1122	N 5120.08	E 4787.44	PC-PT	PT. 1202	N 4959.17	E 4847.24	Center of Manhole (Force Main)
PT. 1054	N 5049.13	E 3972.88	Baseline (Pawnee Ave) - STA. 0+00.00	PT. 1123	N 5093.41	E 4924.00	PC-PT	PT. 1203	N 5078.74	E 4783.96	Center of SWS Inlet
PT. 1055	N 5075.21	E 4095.12	Baseline (Pawnee Ave) - STA. 1+25.00	PT. 1124	N 5098.32	E 4924.95	Radius Pt. of 5.00' Arc	PT. 1204	N 5125.67	E 4793.12	Center of SWS Inlet
PT. 1056	N 5101.29	E 4217.37	Baseline (Pawnee Ave) - STA. 2+50.00	PT. 1125	N 5096.49	E 4929.61	PC-PT	PT. 1205	N 5051.51	E 5359.82	Center of SWS Inlet
PT. 1057	N 5127.95	E 4342.33	Baseline (Pawnee Ave) - STA. 3+77.77	PT. 1126	N 5103.43	E 4932.33	End PT	PT. 1206	N 4951.01	E 4870.48	Center of Existing SWS Inlet
PT. 1058	N 5144.45	E 4463.33	Baseline (Pawnee Ave) - STA. 5+00.00	PT. 1130	N 5076.88	E 4872.98	PC-PT	PT. 1207	N 5102.68	E 4584.52	End R.C.P.
PT. 1059	N 5144.43	E 4563.27	Baseline (Pawnee Ave) - STA. 6+00.00	PT. 1131	N 5073.94	E 4872.41	Radius Pt. of 3.00' Arc	PT. 1208	N 5066.14	E 4771.50	End R.C.P.
PT. 1060	N 5140.10	E 4610.98	Baseline (Pawnee Ave) - STA. 6+47.92	PT. 1132	N 5071.48	E 4870.69	PCC	PT. 1209	N 5130.72	E 4807.65	End R.C.P.
PT. 1061	N 5130.79	E 4670.01	Baseline (Pawnee Ave) - STA. 7+07.69	PT. 1133	N 5007.63	E 4825.90	Radius Pt. of 60.00' & 78.00' Arc	PT. 1210	N 5050.96	E 5373.13	End R.C.P.
PT. 1062	N 5108.30	E 4785.14	Baseline (Pawnee Ave) - STA. 8+25.00	PT. 1134	N 5033.89	E 4899.34	PCC	PT. 1211	N 5090.94	E 4371.49	End R.C.P.
PT. 1063	N 5084.34	E 4907.83	Baseline (Pawnee Ave) - STA. 9+50.00	PT. 1135	N 5034.90	E 4902.17	Radius Pt. of 3.00' Arc	PT. 1225	N 5166.76	E 4953.66	Existing Service Box
PT. 1064	N 5060.38	E 5030.51	Baseline (Pawnee Ave) - STA. 10+75.00	PT. 1136	N 5033.80	E 4904.96	PC-PT	PT. 1226	N 5148.09	E 4662.82	Junction Box
PT. 1065	N 5036.42	E 5153.19	Baseline (Pawnee Ave) - STA. 12+00.00	PT. 1137	N 5064.66	E 4917.09	PC-PT	PT. 1227	N 5119.84	E 4812.17	Junction Box
PT. 1066	N 5000.98	E 5334.68	Baseline (Pawnee Ave) - STA. 13+84.91	PT. 1138	N 5065.76	E 4914.30	Radius Pt. of 3.00' Arc	PT. 1228	N 5106.42	E 4880.88	Junction Box
PT. 1067	N 4974.28	E 5446.56	Baseline (Pawnee Ave) - STA. 15+00.00	PT. 1139	N 5068.70	E 4914.88	PC-PT	PT. 1229	N 5087.00	E 5183.76	Junction Box
PT. 1068	N 4958.62	E 5494.03	Baseline (Pawnee Ave) - STA. 15+50.00								
PT. 1069	N 4935.80	E 5551.89	Baseline (Pawnee Ave) - STA. 16+12.20								

GENERAL NOTES All Layout Coordinates Are To The High Edge of Curb, Unless Otherwise Noted.



Description		
K-42/Pawnee Ave/West St Coordinate Layout Points & Plans		
Scale: 1"=20'	Drawn By: SAC	Index No.: 706028
Date: Apr 1994	Revised: Jun 95	
CITY OF WICHITA DEPARTMENT OF PUBLIC WORKS ENGINEERING DIVISION City Engineer - Michael E. Lindebak		