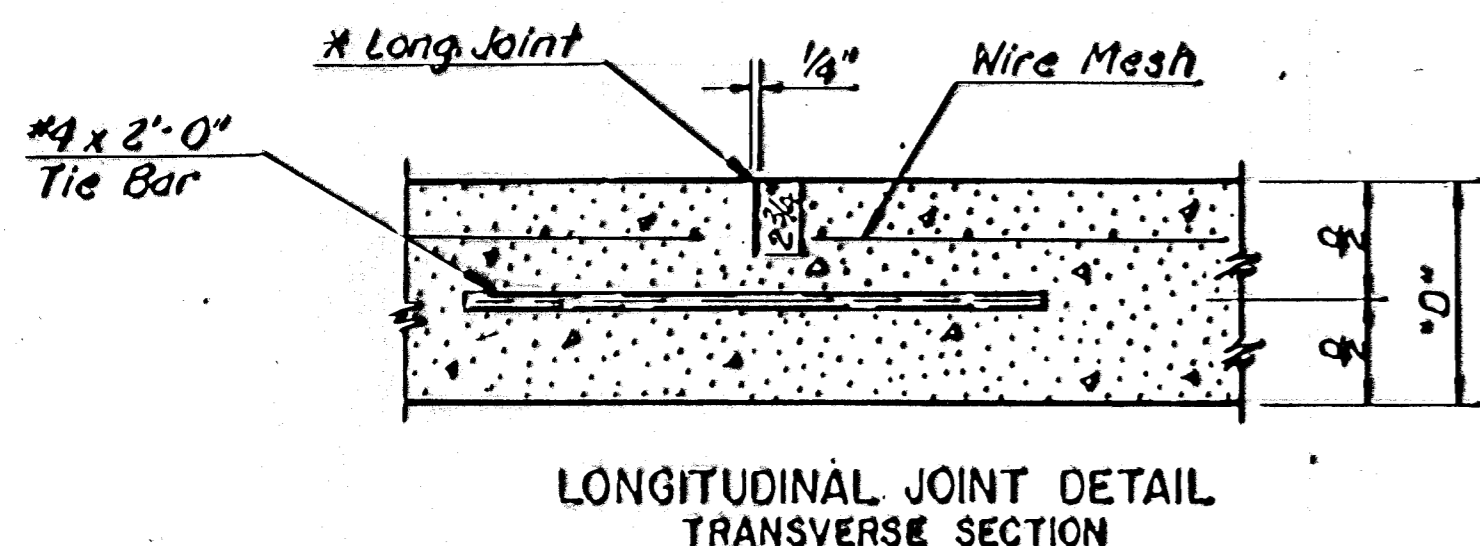
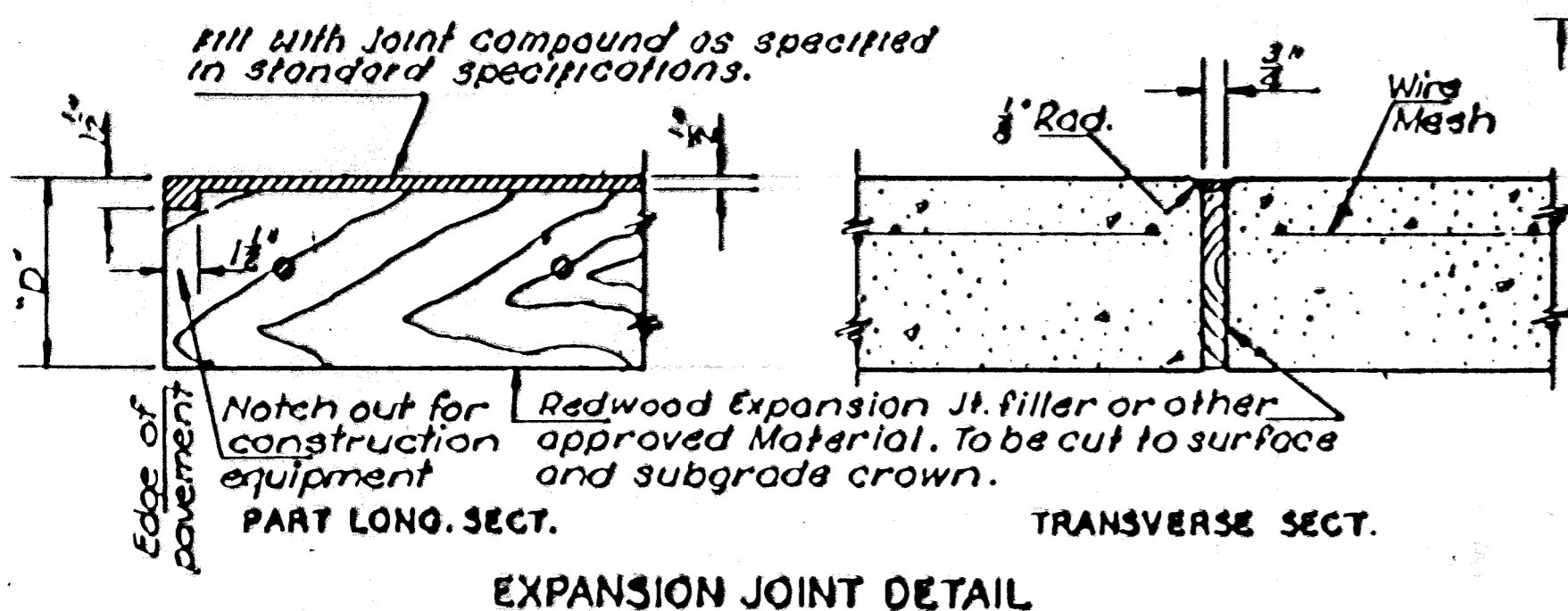


NOTE: The lap shall extend beyond the first transverse wire of each sheet.  
The sheets shall be wired securely at the edges and at intervals not to exceed 2'-6" for the full width of the sheet. Approx. weight of wire mesh = 44 lbs. per 100 sq. ft.  
Other methods for fastening the sheets of wire mesh at the laps may be used with the approval of the Engineer.

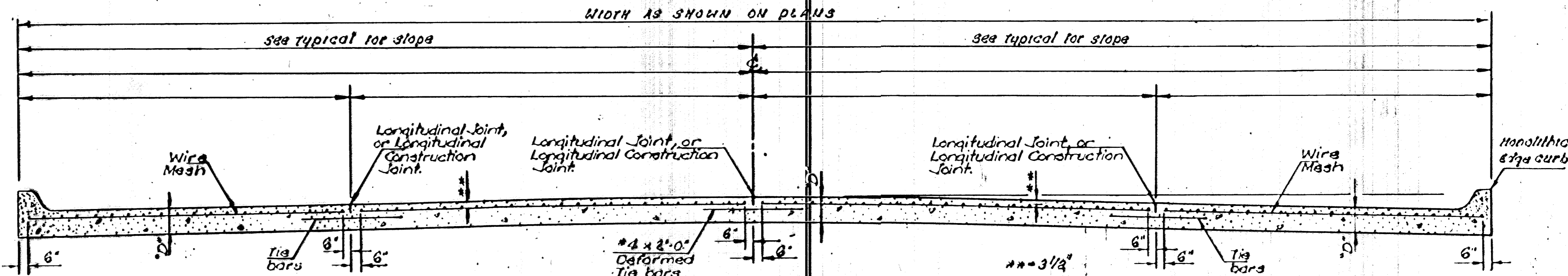
NOTE: CONTRACTION JOINTS AND EXPANSION JOINTS SHALL BE FORMED IN THE MONOLITHIC CURB AT ALL LOCATIONS WHERE SUCH JOINTS ARE PLACED IN THE PAVEMENT. ADDITIONAL CONTRACTION JOINTS SHALL BE CUT IN THE MONOLITHIC CURB IN UNIFORM LENGTHS NOT EXCEEDING TEN FOOT INTERVALS BETWEEN THOSE JOINTS WHICH COINCIDE WITH JOINTS IN THE PAVEMENT.



NOTE: Longitudinal joint formed by sawing 2 3/4" deep and 3/8" wide and filled as specified in standard specifications.



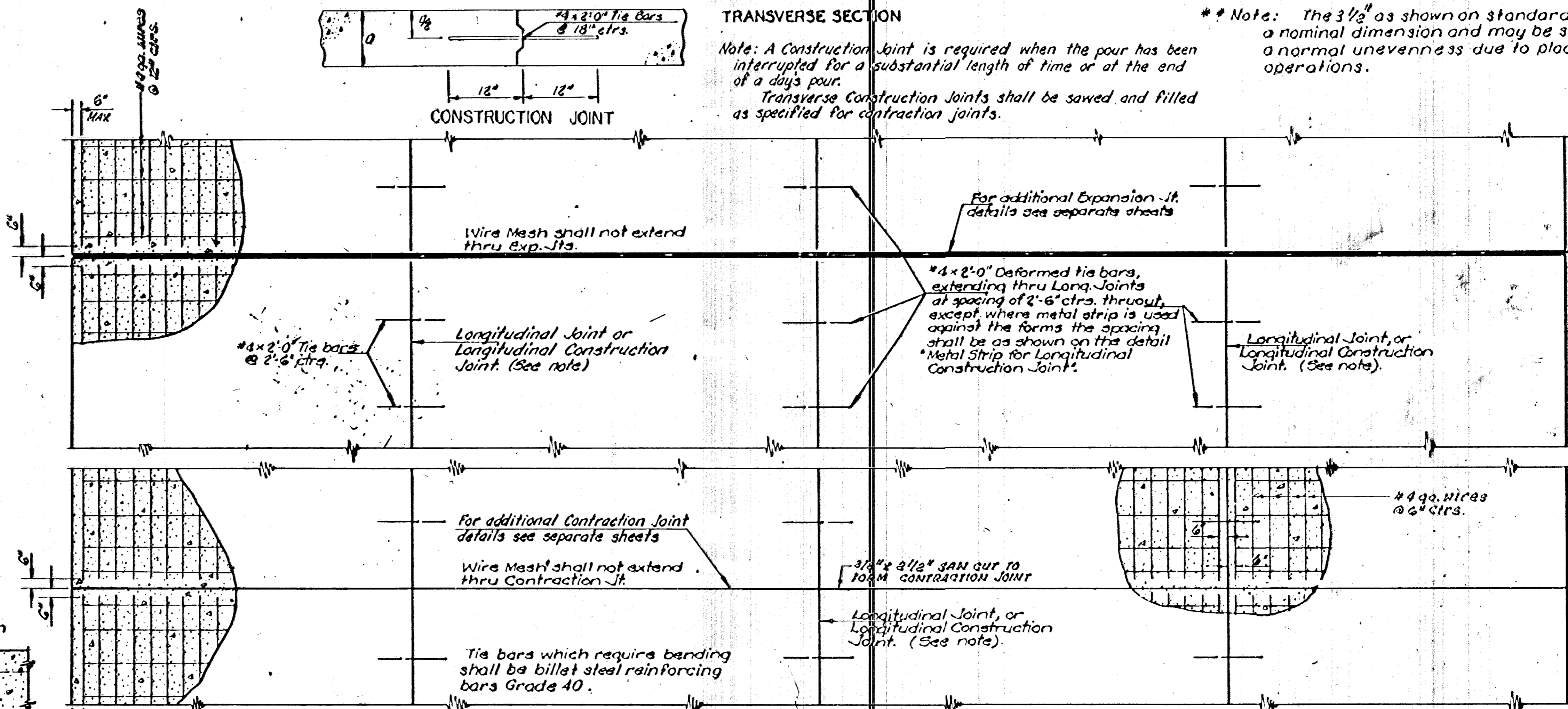
NOTE: EXPANSION JOINT MATERIAL MUST BE SECURELY HELD IN PLACE BY USING METAL STAKES, METAL PINS, OR BY OTHER APPROVED METHODS SO THAT WHEN THE PAVEMENT IS COMPLETED THE EXPANSION MATERIAL WILL BE PERPENDICULAR TO THE SURFACE OF THE COMPLETED PAVEMENT. CONCRETE SHALL BE HAND PLACED ON EACH SIDE OF THE EXPANSION JOINT MATERIAL IN A MANNER THAT WILL PRECLUDE DISPLACEMENT OF THE EXPANSION JOINT MATERIAL.



TRANSVERSE SECTION

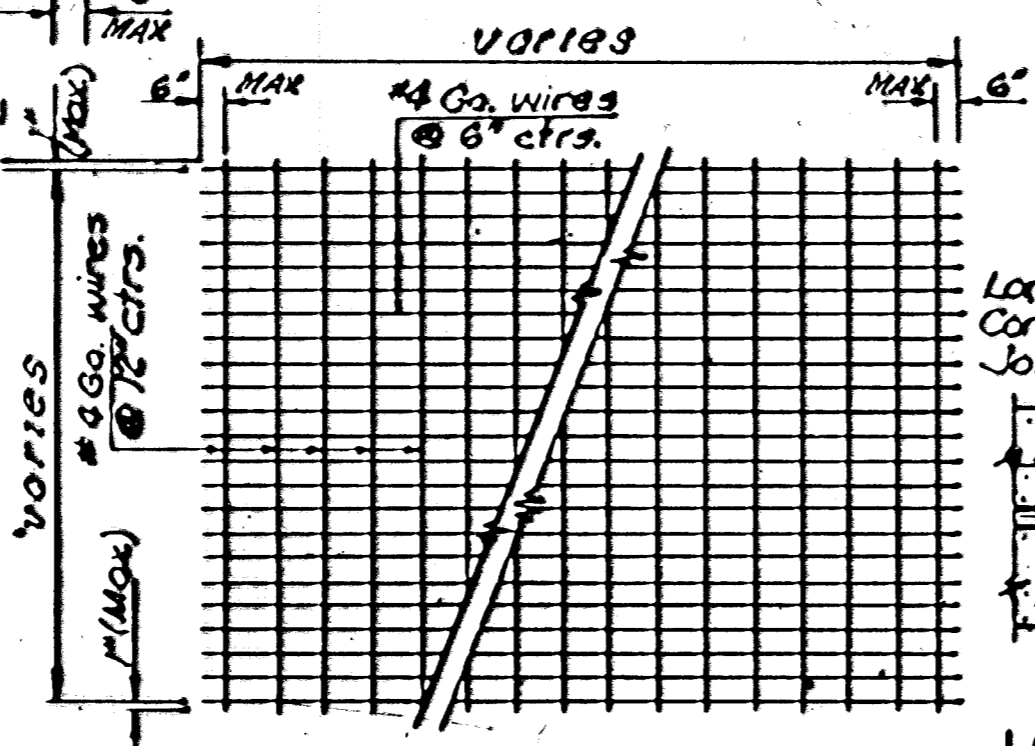
Note: A Construction Joint is required when the pour has been interrupted for a substantial length of time or at the end of a days pour.  
Transverse Construction Joints shall be sawed and filled as specified for contraction joints.

\*\* Note: The 3/2" as shown on standard sheet is a nominal dimension and may be subject to a normal unevenness due to placement operations.

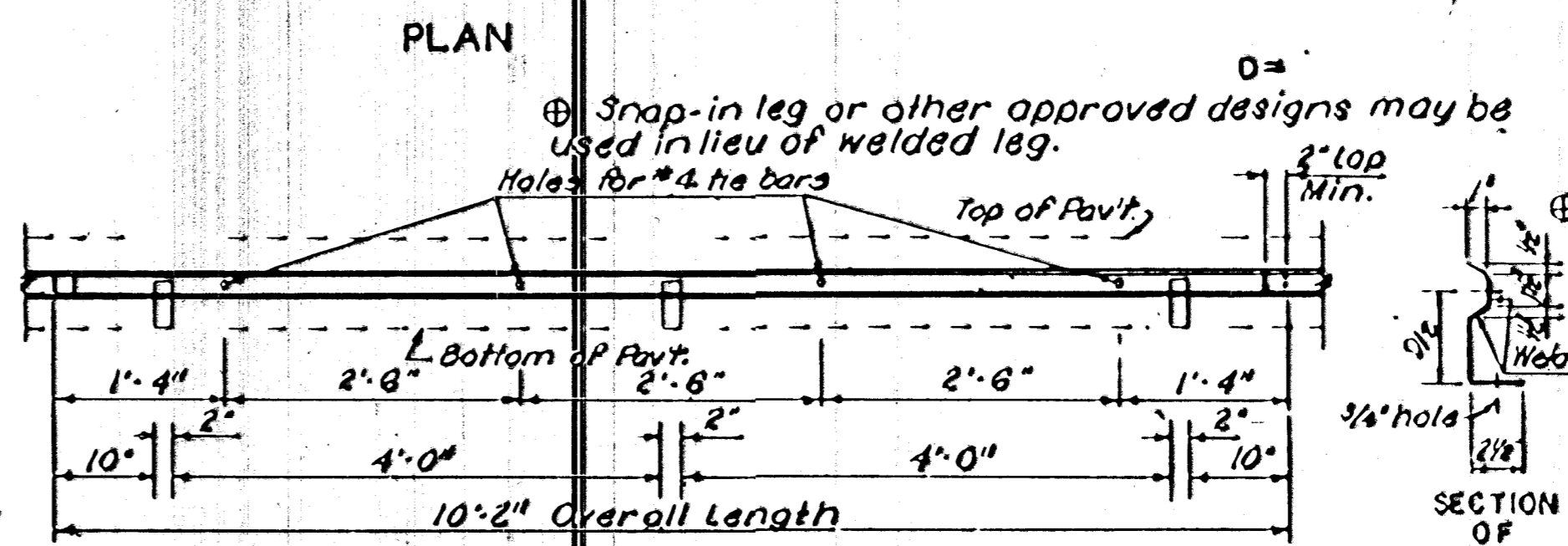


Expansion joints are not to be used unless otherwise shown on the plans.

Contraction Jts spaced as shown on plans.



LONGITUDINAL CONSTRUCTION JOINT DETAIL TRANSVERSE SECTION



SECTION OF RECESSED FORM LEG

CITY OF WICHITA  
DEPARTMENT OF ENGINEERING  
CONCRETE PAVEMENT DETAILS  
PROJ. NO. ORIGINAL