

PRECAST SLAB AND FLOOR REINFORCING

Mark	Size	No.	Length	No.	Length	No.	Length	No.	Length	No.	Length
a1	#4	6	8'-7"	6	8'-7"	6	10'-7"	6	12'-7"	6	14'-7"
a2	#4	4	8'-0"	4	8'-0"	4	10'-0"	4	12'-0"	4	14'-0"
a3	#4	13	4'-1"	13	5'-1"	13	6'-1"	13	7'-1"	13	8'-1"
b1	#4	1	4'-9"	1	4'-9"	1	4'-9"	1	4'-9"	1	4'-9"
b2	#4	23	6'-1"	29	6'-1"	35	6'-1"	41	6'-1"	47	6'-1"
c1	#4	8	3'-10"	8	4'-2"	8	4'-6"	8	4'-10"	8	5'-2"

WALL REINFORCING

Mark	Size	No.	Length	No.	Length	No.	Length	No.	Length	No.	Length
w1	#4	0	6'-1"	0	6'-1"	0	6'-1"	0	6'-1"	0	6'-1"
w2	#4	0	4'-1"	0	5'-1"	0	6'-1"	0	7'-1"	0	8'-1"
w3	#4	32	2	36	2	40	2	44	2	48	2

STANDARD CURB INLET PRECAST TOPS

W	PRECAST TOP SIZE	PIPE SIZE	CU. YD. CONC.
3'-4"	36" x 6'-4" x 7 1/2"	21" & SMALLER	0.38 ±
5'-4"	48" x 6'-4" x 7 1/2"	24" & 30"	0.51 ±
6'-4"	60" x 6'-4" x 7 1/2"	36" & 42"	0.64 ±
7'-4"	60" x 6'-4" x 7 1/2"	48" & 54"	0.77 ±
8'-4"	78" x 6'-4" x 7 1/2"	60" & 66"	0.90 ±

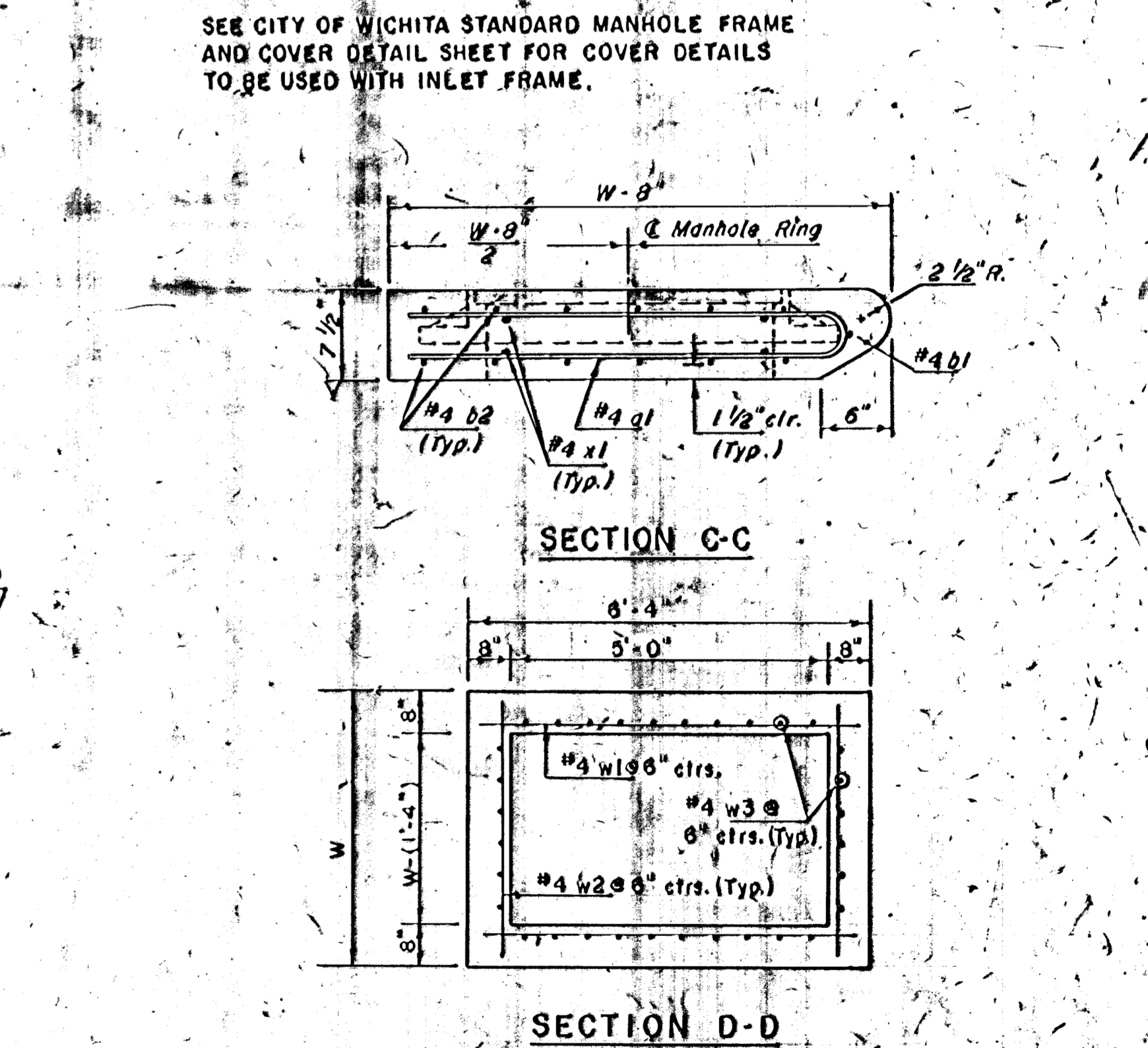
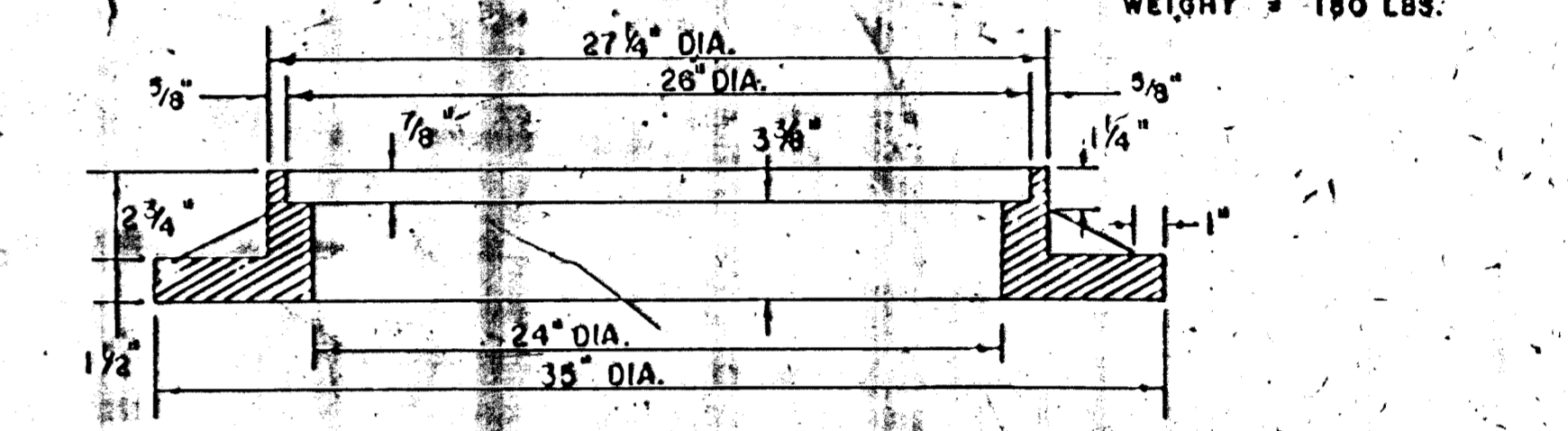
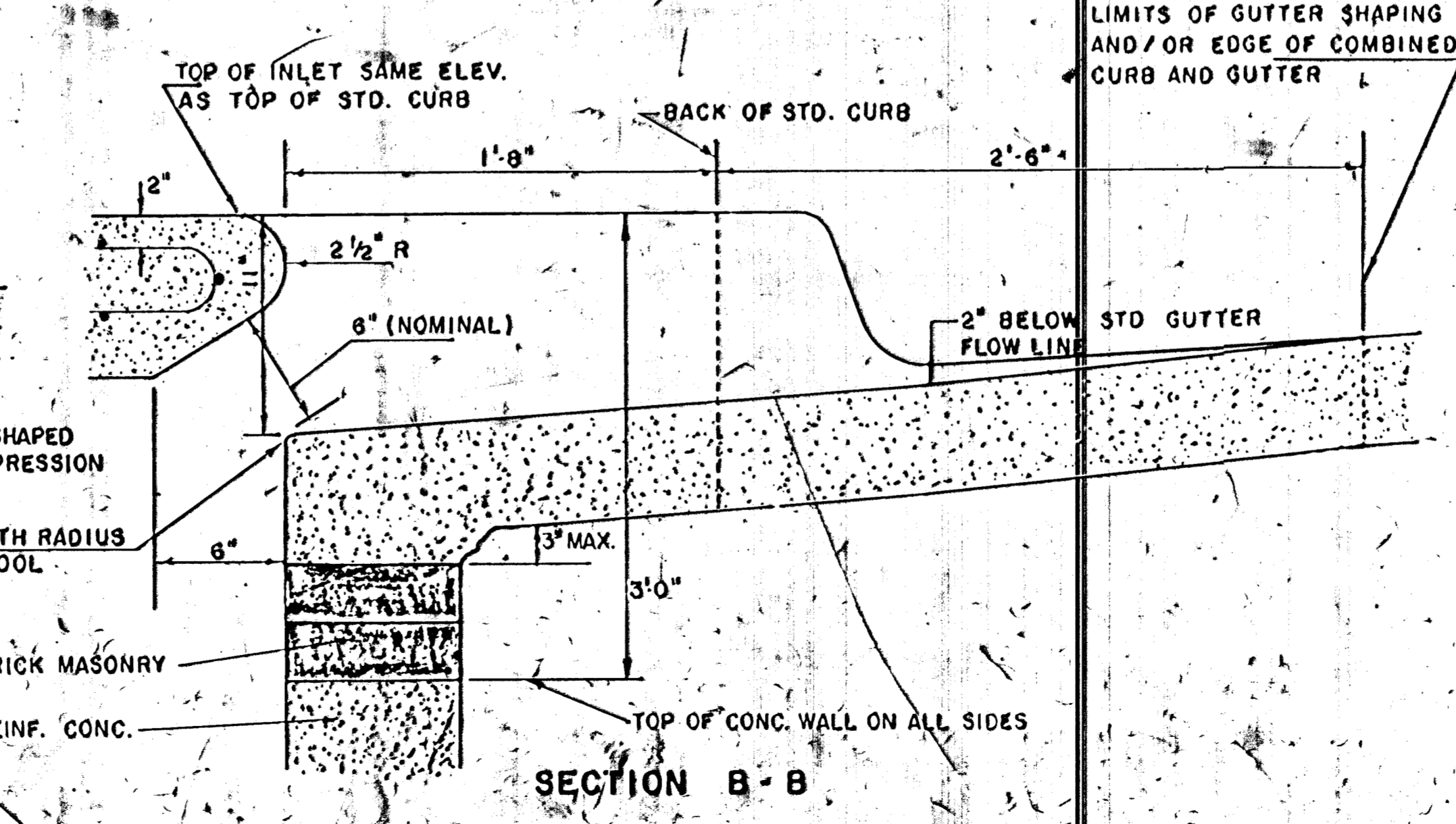
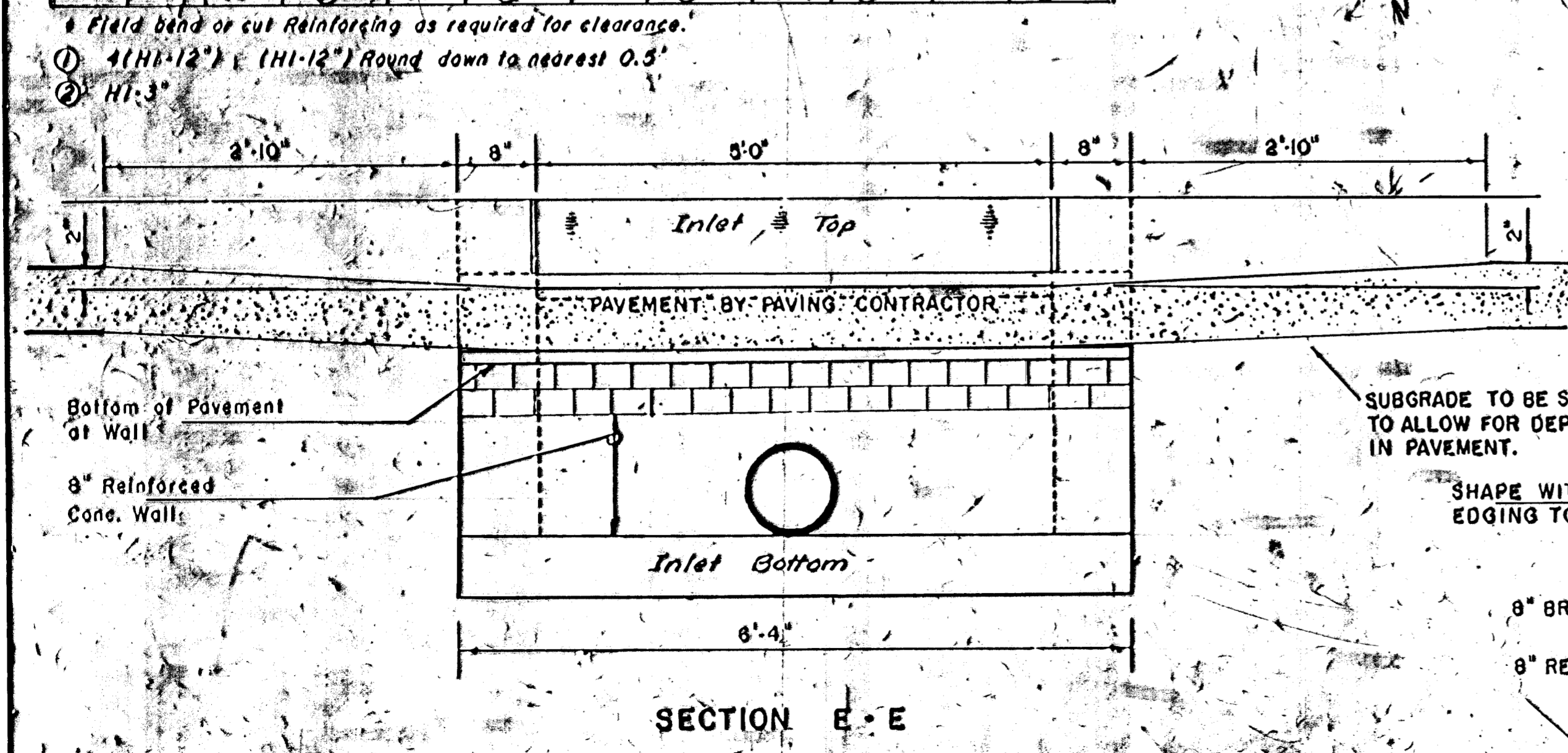
NOTE: CONTRACTOR SHALL HAVE THE OPTION OF CONSTRUCTING 8" BRICK MASONRY WALLS BETWEEN THE CONCRETE INLET BASE AND TOP ON THIS INLET WHEN W = 6'-4" AND H = 7'-0" OR LESS.

ADDITIONAL CURB AND GUTTER CONSTRUCTION NECESSARY TO CONNECT SET-BACK INLET TO PAVEMENT WILL BE PAID FOR AT THE UNIT PRICE BID FOR EACH INLET HOOKUP.

INLET INVERT SHALL BE SHAPED WITH 8 SACK SAND MIX CONCRETE TO CREATE FLOW CHANNELS AND TO INCREASE HYDRAULIC EFFICIENCY SUCH THAT THE INLET WILL BE SELF-CLEANING BETWEEN ALL INLET AND/OR OUTLET PIPES.

THE ENDS OF ALL PIPES INSTALLED IN INLETS SHALL BE CUT OFF FLUSH WITH THE INSIDE FACE OF THE INLET WALL.

**NOTE: Slope of Inlet Tops to match Sidewalk or Parking Slopes within Limits Indicated.



REVISED 11-30-1983
REVISED 12-21-1984
Revised 2-16-1989

DETAIL STANDARD TYPE IA CURB INLET
CITY OF WICHITA, KANSAS
INLET OPENING = 6" x 5'-0"
JUNE 1984