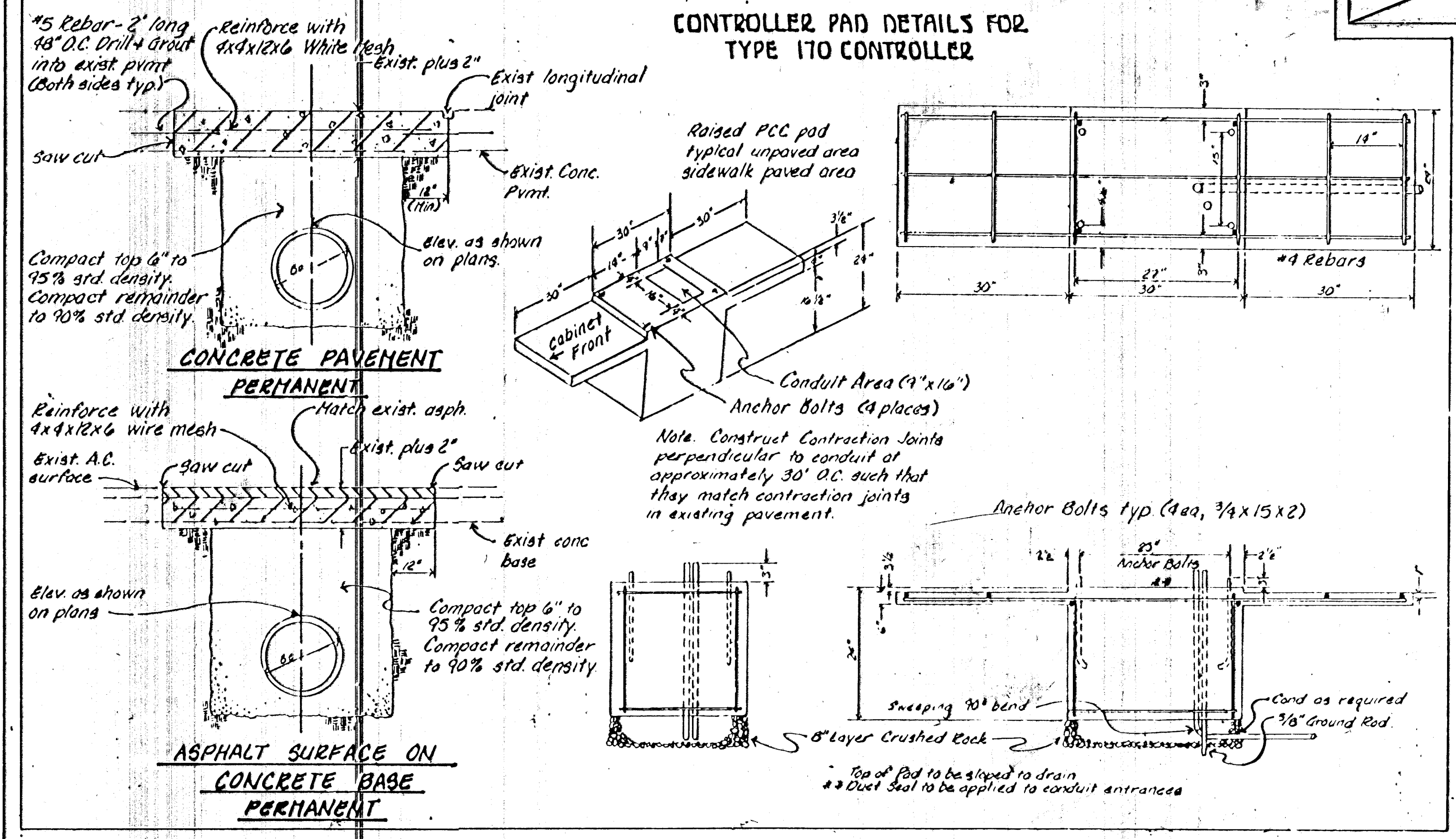
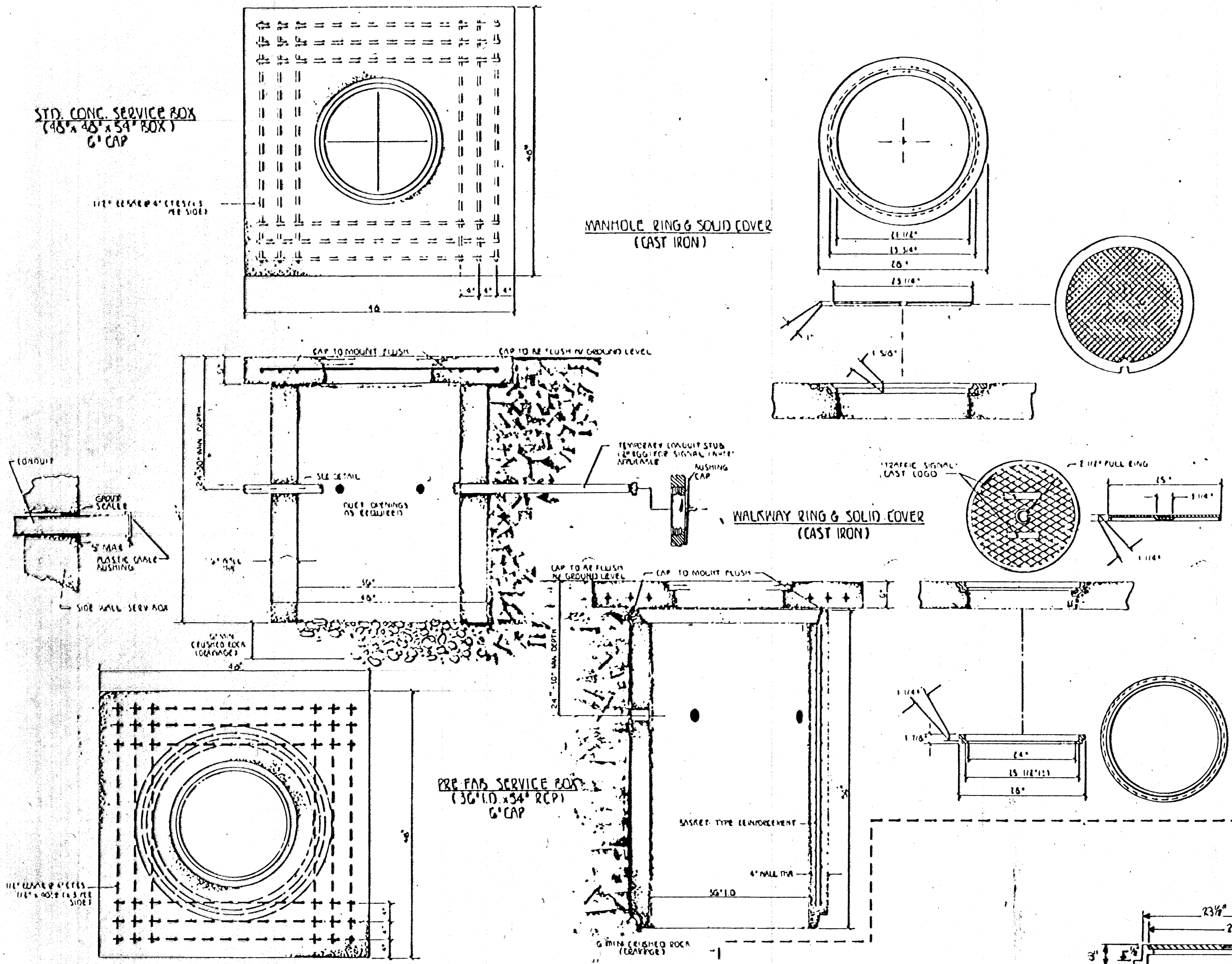
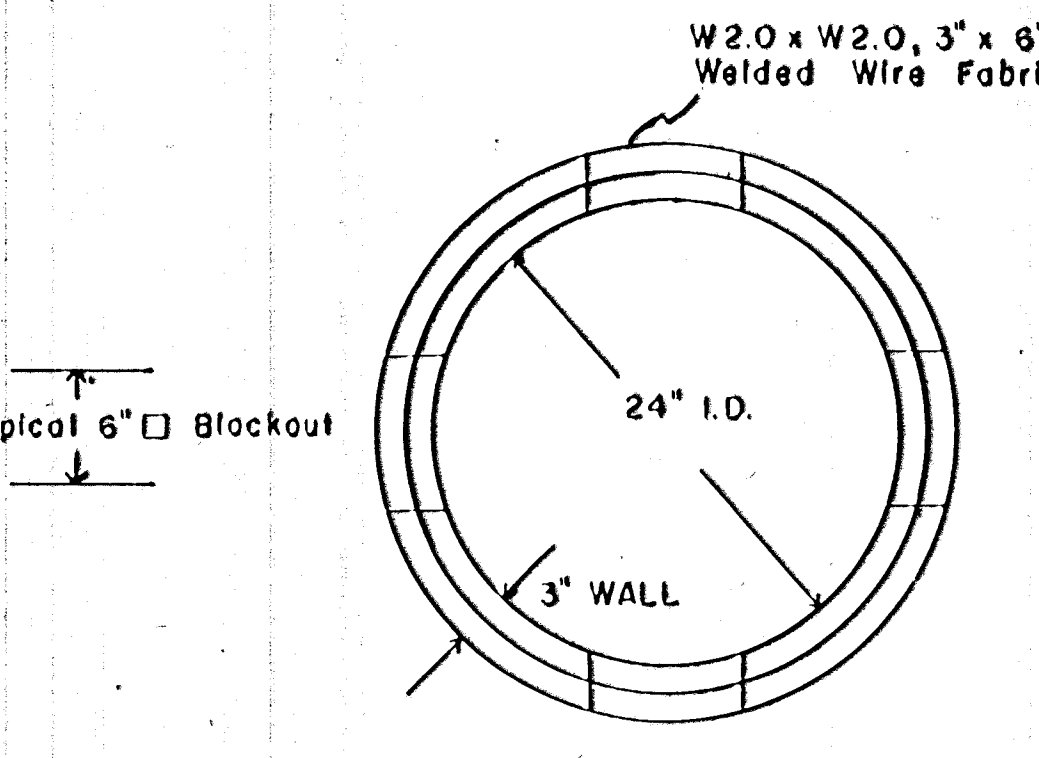
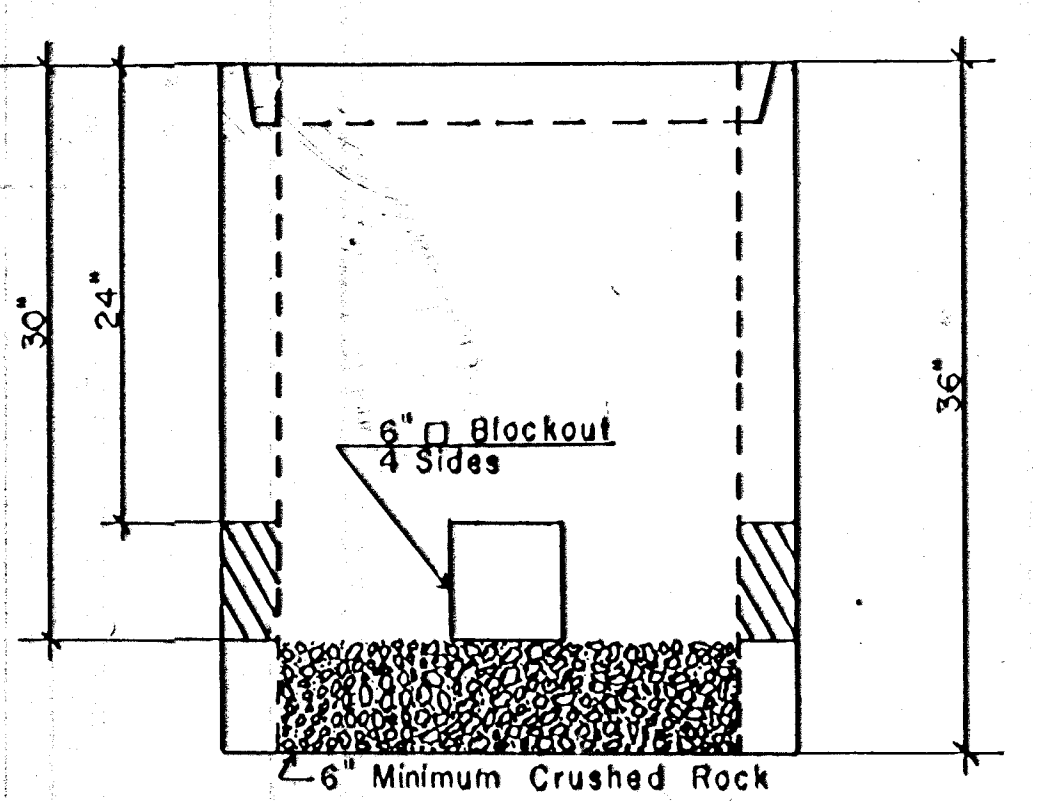
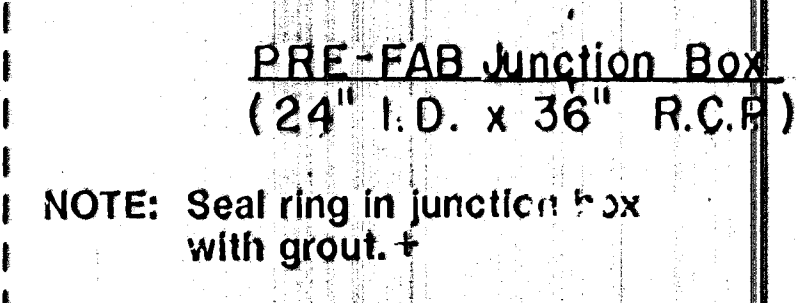


• SERVICE BOX CONSTRUCTION / INSTALLATION DETAILS •

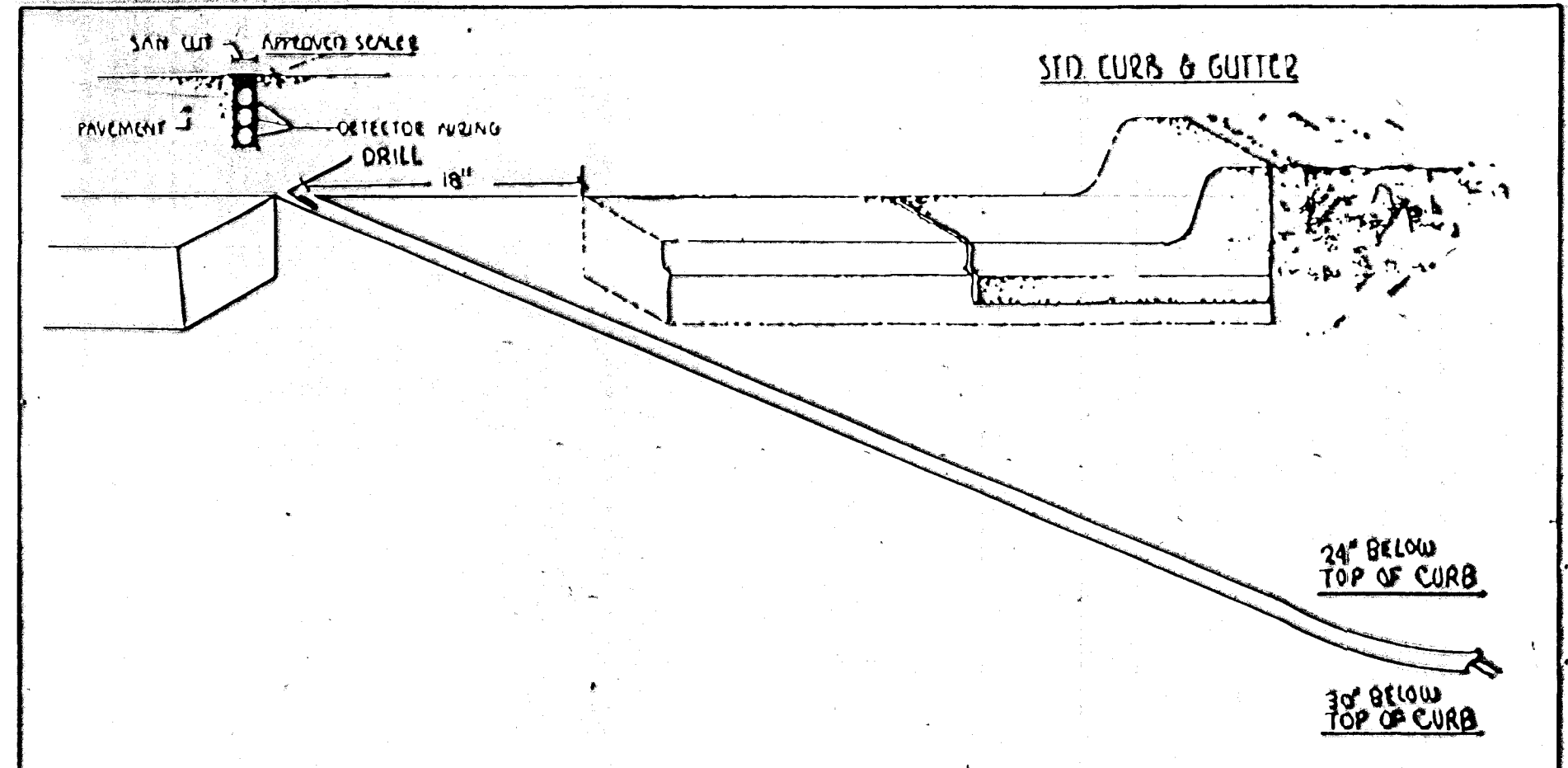


• JUNCTION BOX DETAILS •

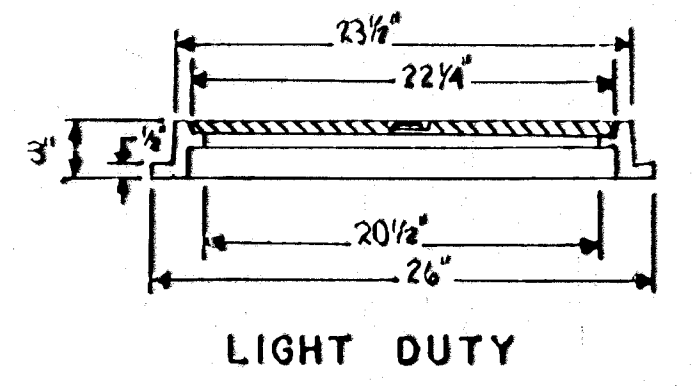


NOTES: * All Service Boxes And Junction Boxes Do Have 6\"/>

- SERVICE BOX:**
- CONDUIT CONNECTION TO BE FLUSH TO WITHIN 5\"/>
 - CONDUIT CONNECTIONS TO SERVICE BOX SHALL BE TERMINATED WITH PLASTIC CABLE BUSHING.
 - CONDUIT SHALL BE SEALED WITH APPROVED SEALER AT INSIDE WALL FACE.
 - A PRE CAST SERVICE BOX WITH OPEN BOTTOM WILL BE ACCEPTED AS ALTERNATE SUBJECT TO APPROVAL BY ENGINEER.
- JUNCTION BOX:**
- BOX TO BE INSTALLED FLUSH WITH GROUND LEVEL (VARIABLE WITH BOX HEIGHT)
 - PRE-FAB (R.C.P.) JUNCTION BOX TO BE USED. OTHER DESIGNS OF SIMILAR SIZE & SHAPE MAY BE USED AS ACCEPTABLE ALTERNATIVE SUBJECT TO APPROVAL.
- TRENCHING:**
- CONDUIT DEPTH TO BE 30\"/>
 - BACKFILL TO BE COMPACTED IN 6\"/>
 - SLOPE CONDUIT TO DRAIN AS DIRECTED BY THE ENGINEER
 - 3\"/>



+ Grout Is to be 3 parts sand and 1 part cement with enough water for suitable mastic.



• CONDUIT/DETECTOR WIRE INSTALLATION DETAILS •

REVISION DATE	COMMENT'S	INT.
Aug 83	Change Controller Box	JDB
Aug 83	Change Conduit Depth	JDB
Aug 83	Change Junction Box	JDB
Aug 83	Added grout spec.	JDB

PROJECT DESCRIPTION
SERVICE / JUNCTION BOX, CONTROLLER PAD CONSTRUCTION / INSTALLATION DETAILS

PROJECT NUMBER

BOOK NO	APPROVED BY	DATE AUG 83
DRAWN BY JAL		REVISED

CITY OF WICHITA
 DEPARTMENT OF PUBLIC WORKS
 TRAFFIC ENGINEERING DIVISION
 MM & MURPHY TRAFFIC ENGINEER

SCALE
 NO SCALE