

GENERAL NOTES

1. THE CONTRACTOR SHALL BE RESPONSIBLE FOR PRESERVING PROPERTY IRONS. THE CONTRACTOR SHALL BE REQUIRED TO RE-ESTABLISH ANY PROPERTY IRONS WHICH ARE DAMAGED OR DESTROYED BY HIS CONSTRUCTION OPERATIONS. SUCH IRONS SHALL BE RE-ESTABLISHED BY A LICENSED LAND SURVEYOR IN ACCORDANCE WITH STATE LAWS.

UNDERGROUND UTILITY SERVICE LINES AND OVERHEAD UTILITY POLE LINES ARE TO BE ADJUSTED AS NECESSARY BY OTHERS PRIOR TO CONSTRUCTION UNLESS THE PLANS SPECIFICALLY IDENTIFY A UTILITY TO BE ADJUSTED BY ITS OWNER DURING CONSTRUCTION. EXISTING UTILITIES AND THEIR LOCATIONS, AS SHOWN ON THE PLANS, REPRESENT THE BEST INFORMATION OBTAINABLE FOR DESIGN. LOCATION INFORMATION HAS BEEN OBTAINED FROM THE VARIOUS UTILITY COMPANIES AND IS EITHER FROM COMPANY RECORD DRAWINGS OR COMPANY PROVIDED FIELD LOCATIONS. THE CONTRACTOR WILL BE REQUIRED TO WORK AROUND EXISTING UTILITIES WITHIN THE RIGHT OF WAY WHICH DO NOT CONFLICT WITH PROPOSED CONSTRUCTION.

NOTE: NOTIFY ALL THE FOLLOWING COMPANIES PRIOR TO ANY EXCAVATION:

KANSAS ONE-CALL	1-800-344-7233
ARKLA GAS COMPANY	316-942-8350
CONOCO PIPE LINE CO (JERRY BOYD)	316-681-2081
GETTY GAS GATHERING INC. (WANTS TO BE ON-SITE)	316-775-7533
KANSAS GAS & ELECTRIC	316-264-1141
KPL GAS SERVICE	316-263-7511
MULTIMEDIA CABLEVISION	316-262-0661
OXY NGL (USA), INC. (BOB RENOLLET)	316-662-6691 EXT 141
SOUTHWESTERN BELL TELEPHONE	316-571-2115
CITY OF WICHITA WATER & SEWER	316-268-4908
WILLIAMS NATURAL GAS CO.	316-524-0491
	OR 316-524-4390

STORM WATER SEWER NO.403 PLANS FOR

SOUTH SENECA

FROM SOUTH LINE OF 48TH. STREET SOUTH TO
400' NORTH OF NORTH LINE OF MAC ARTHUR

C.I.P. PROJECT NO. D-109

PHASE II

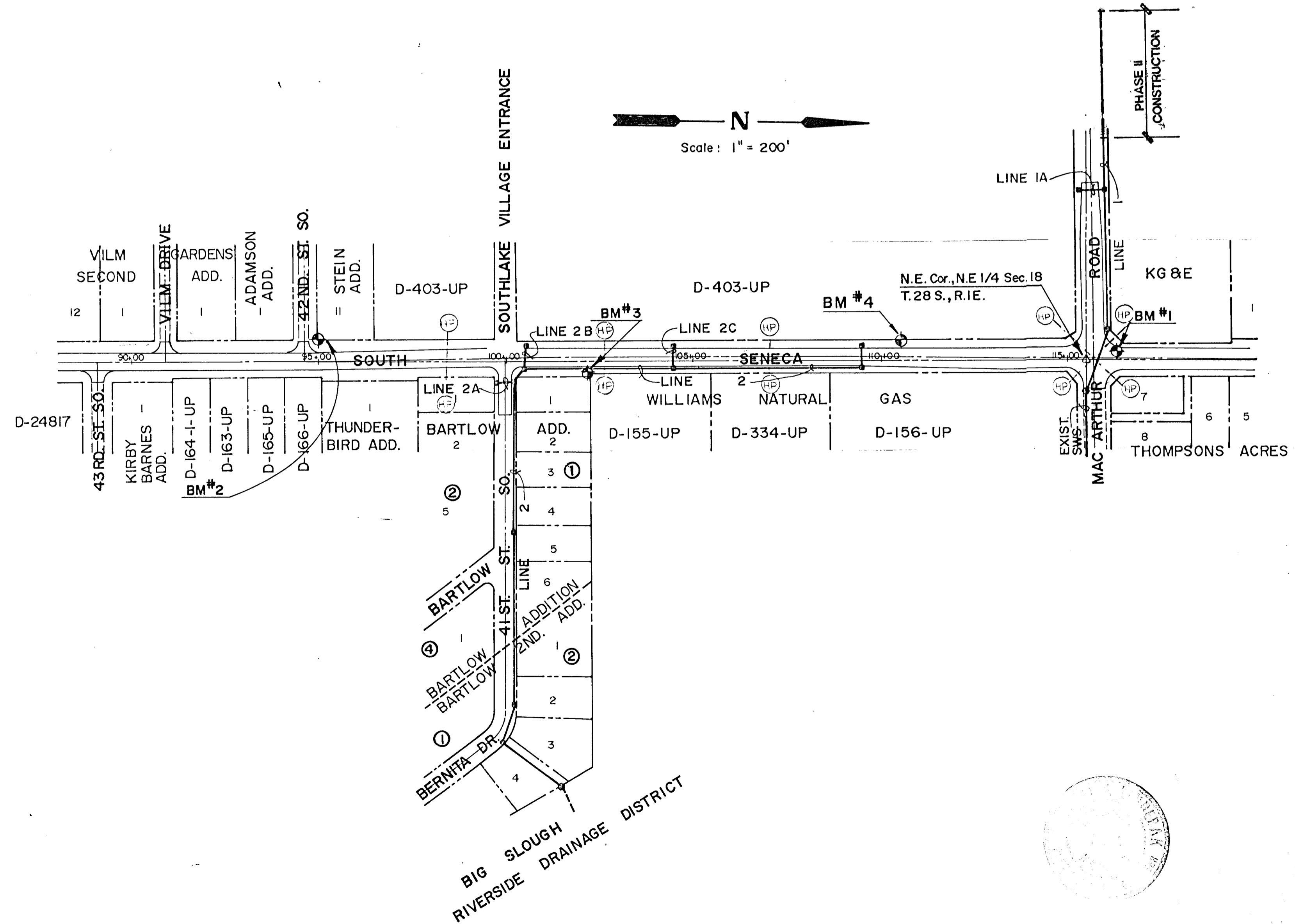
CITY OF WICHITA, KANSAS
MICHAEL E. LINDEBAK, CITY ENGINEER

INDEX NO. 724039

468-81949

INDEX TO DRAWINGS

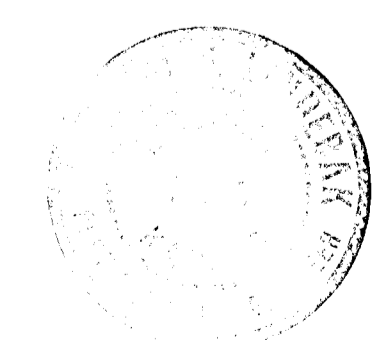
SHEET NO.	DESCRIPTION
1	TITLE SHEET
2	PLAN AND PROFILE



BENCH MARKS

- BM #1 C.O.W. Bench Mark Disc, 86' north and 28.5' west of section corner at the intersection of South Seneca and MacArthur Road. Elev. 90.370
- BM #2 Step nail in power pole at the northwest corner of the intersection of South Seneca and 42nd Street South. Elev. 89.83
- BM #3 Step nail in power pole along the east side of South Seneca at the South property line of Williams Natural Gas Company. Elev. 90.75
- BM #4 Step nail in 3rd pole south of MacArthur Road along the west side of South Seneca. Elev. 93.40

*Booked
12/91
MEL*

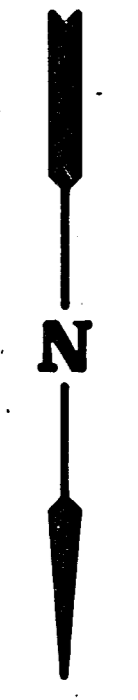


	SOUTH SENECA IMPROVEMENTS STORM WATER SEWER #403	Design: JNJ Drawn by: DLM Checked by:
	48TH. ST. SO. TO MAC ARTHUR	Date: 9 MAY, 91 Job no.

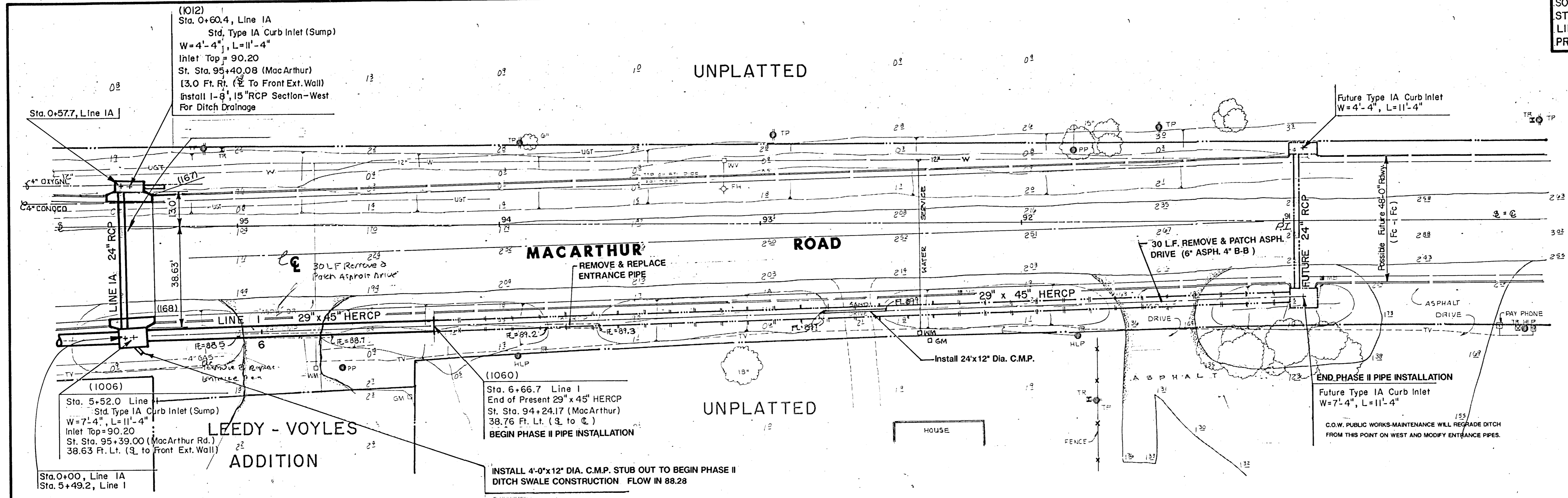
MID-KANSAS ENGINEERING CONSULTANTS PA 3500 NORTH ROCK ROAD BUILDING #800 WICHITA, KANSAS 67226	636-5566
---	----------

Sheet 1 of 2

K03 45



Scale: 1" = 20' HORIZ.
 1" = 5' VERT.



PLAN - LINE I & LINE IA

PROFILE - LINE I & LINE IA

