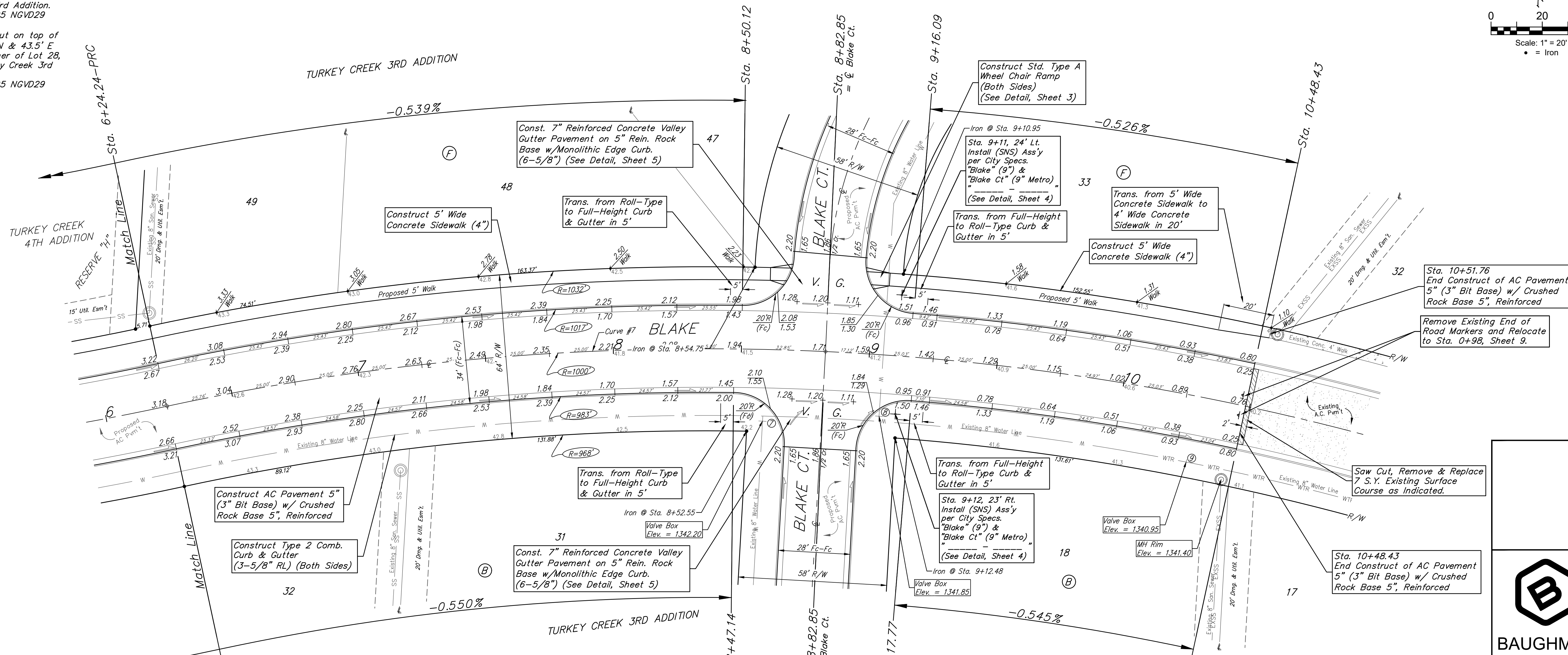
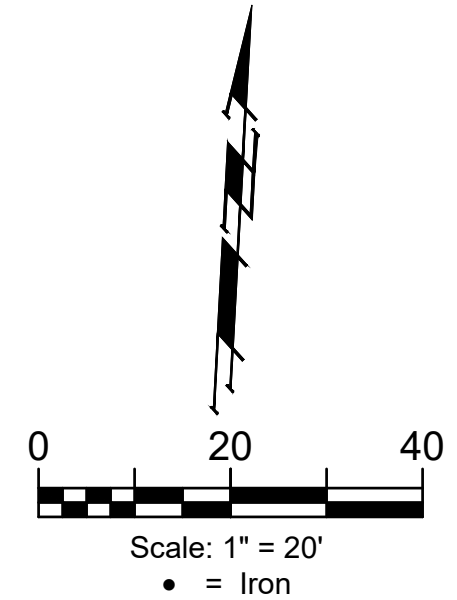


BENCHMARKS:

BM #1: "□" Cut in top of curb, south of SE corner of Lot 82, Block A, Turkey Creek 3rd Addition.
Elev. = 1335.49 NGVD29

BM #2: "□" Cut on top of curb inlet, SW of the SE corner of Lot 81, Block A, Turkey Creek 3rd Addition.
Elev. = 1335.95 NGVD29

BM #3: "□" Cut on top of yard inlet, 5' N & 43.5' E of the SE corner of Lot 28, Block H, Turkey Creek 3rd Addition.
Elev. = 1335.95 NGVD29



Curve #7
Curve Data Based on Centerline
Rad. = 1000' Delta = 24°18'16" Tangent = 215.33'
Arc = 424.19' L.C. = 421.02' Def./Ft. = 1.71888 Min.

Station	Arc	Face Chord Lengths		Defl.	Total Defl.
		8' Left	8' Right		
6+24.24	-	-	-	0'00"00"	0'00"00"
6+25.00	0.76'	0.78'	0.74'	0'01"18"	0'01"18"
6+50.00	25.00'	25.62'	24.37'	0'42"59"	0'44"17"
6+75.00	25.00'	25.62'	24.37'	0'42"58"	1'27"15"
7+00.00	25.00'	25.62'	24.37'	0'42"58"	2'10"13"
7+25.00	25.00'	25.62'	24.37'	0'42"59"	2'53"12"
7+50.00	25.00'	25.62'	24.37'	0'42"58"	3'36"10"
7+75.00	25.00'	25.62'	24.37'	0'42"58"	4'19"08"
8+00.00	25.00'	25.62'	24.37'	0'42"59"	5'02"07"
8+25.00	25.00'	25.62'	24.37'	0'42"58"	5'45"05"
8+47.14	22.14'	22.69'	21.59'	0'38"03"	6'23"08"
8+50.45	3.31'	3.39'	3.23'	0'05"42"	6'28"50"
9+16.09	65.64'	67.27'	63.99'	1'52"49"	8'21"39"
9+17.77	1.68'	1.72'	1.64'	0'02"54"	8'24"33"
9+25.00	7.23'	7.41'	7.05'	0'12"25"	8'36"58"
9+50.00	25.00'	25.62'	24.37'	0'42"59"	9'19"57"
9+75.00	25.00'	25.62'	24.37'	0'42"58"	10'02"55"
10+00.00	25.00'	25.62'	24.37'	0'42"58"	10'45"53"
10+25.00	25.00'	25.62'	24.37'	0'42"59"	11'28"52"
10+48.43	23.43'	24.02'	22.84'	0'40"16"	12'09"08"

Roll type curb & gutter to be constructed on the pavement on this sheet.
Top of curb elevation are given for full height curb.

BAUGHMAN COMPANY
315 Ellis St.
Wichita, KS 67211
316-262-7271
BaughmanCo.com

TURKEY CREEK 3RD ADDITION
PHASE 4

BLAKE

Street Paving Improvements
Sta. 6+24.24 to Sta. 10+48.43

PROJECT NUMBER:
472-2020-085616

DESIGN: DMV DRAWN: JAK

DATE: Mar. 31, 2021

SHEET OF
10 26

File: E:\Projects\Turkey Creek 3rd\Engineering\Phase 4\SL_20-02-E497\STR PLANS.dwg