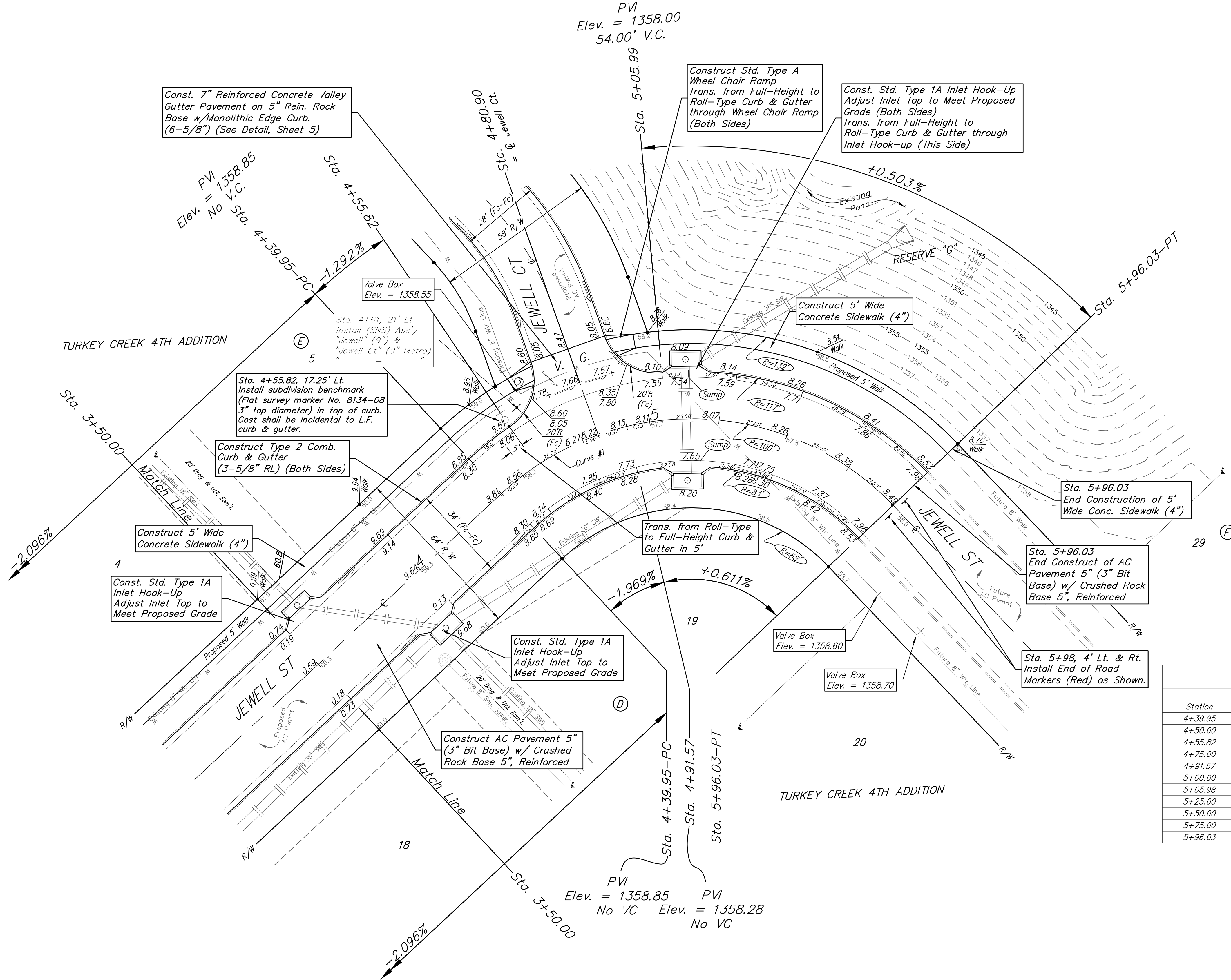
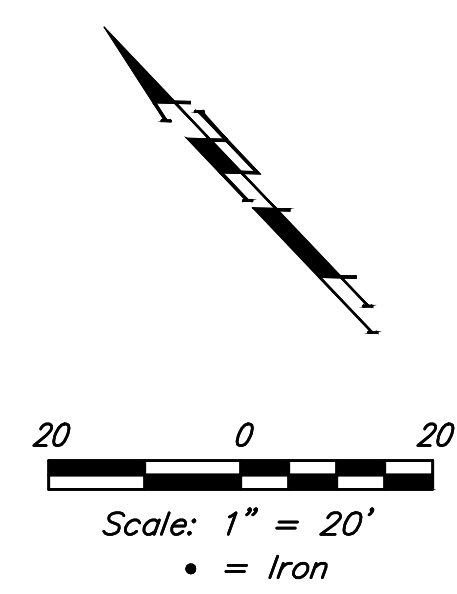


BENCHMARKS:
 135th St. W. & Pawnee
 City of Wichita Benchmark Disc,
 Northeast Corner of Intersection
 On SW Corner of Concrete Base
 of High Line Pole.
 Elev. = 1359.65 NGVD29

City of Wichita Benchmark Disc,
 0.4 Mi. South of Kellogg On
 135th St. W., West Side of
 Concrete Base for High Line
 Pole, West of K.G.&E.
 Substation, 135± South of
 Railroad Tracks On East Side of
 135th St. W.
 Elev. = 1367.77 NGVD29



Curve #1
 Curve Data Based on Centerline
 Rad. = 100' Delta = 19'02"01" Tangent = 16.76'
 Arc = 156.08' L.C. = 33.07' Def./Fl. = 3.65843 Min.

Station	Arc	Face Chord Lengths		Defl.	Total Defl.
		8' Left	8' Right		
4+39.95	-	-	-	0'00"00"	0'00"00"
4+50.00	10.05'	2.67'	1.60'	0'36"46"	0'36"46"
4+55.82	5.82'	1.55'	0.93'	0'21"18"	0'58"04"
4+75.00	19.18'	5.10'	3.06'	1'10"10"	2'08"14"
4+91.57	16.57'	4.41'	2.64'	1'00"37"	3'08"51"
5+00.00	8.43'	2.24'	1.35'	0'30"50"	3'39"41"
5+05.98	5.98'	1.59'	0.95'	0'21"53"	4'01"34"
5+25.00	19.02'	5.06'	3.04'	1'09"35"	5'11"09"
5+50.00	25.00'	6.65'	3.99'	1'31"28"	6'42"37"
5+75.00	25.00'	6.65'	3.99'	1'31"27"	8'14"04"
5+96.03	21.03'	5.59'	3.36'	1'16"56"	9'31"00"

Roll type curb & gutter to be constructed on the pavement on this sheet.
 Top of curb elevation are given for full height curb.

Baughman Turkey Creek 4th Addition - Phase II
JEWELL
 Sta. 3+50.00 to Sta. 5+96.03

Baughman Company, P.A. 315 Ellis St. Wichita, KS 67211 P 316-262-2711 F 316-262-0149
 ENGINEERING | SURVEYING | PLANNING | LANDSCAPE ARCHITECTURE

PROJECT NUMBER 472-2020-085619	DESIGN DMV	DRAWN JAK
REVISIONS:	APPROVED	DATE 8/13/2020
	SCALE Noted	SHEET 9 OF 23

E:\Projects\Turkey Creek 4th - Engineering\Phase 2\Sr_2020-085619\STR PLANS.dwg