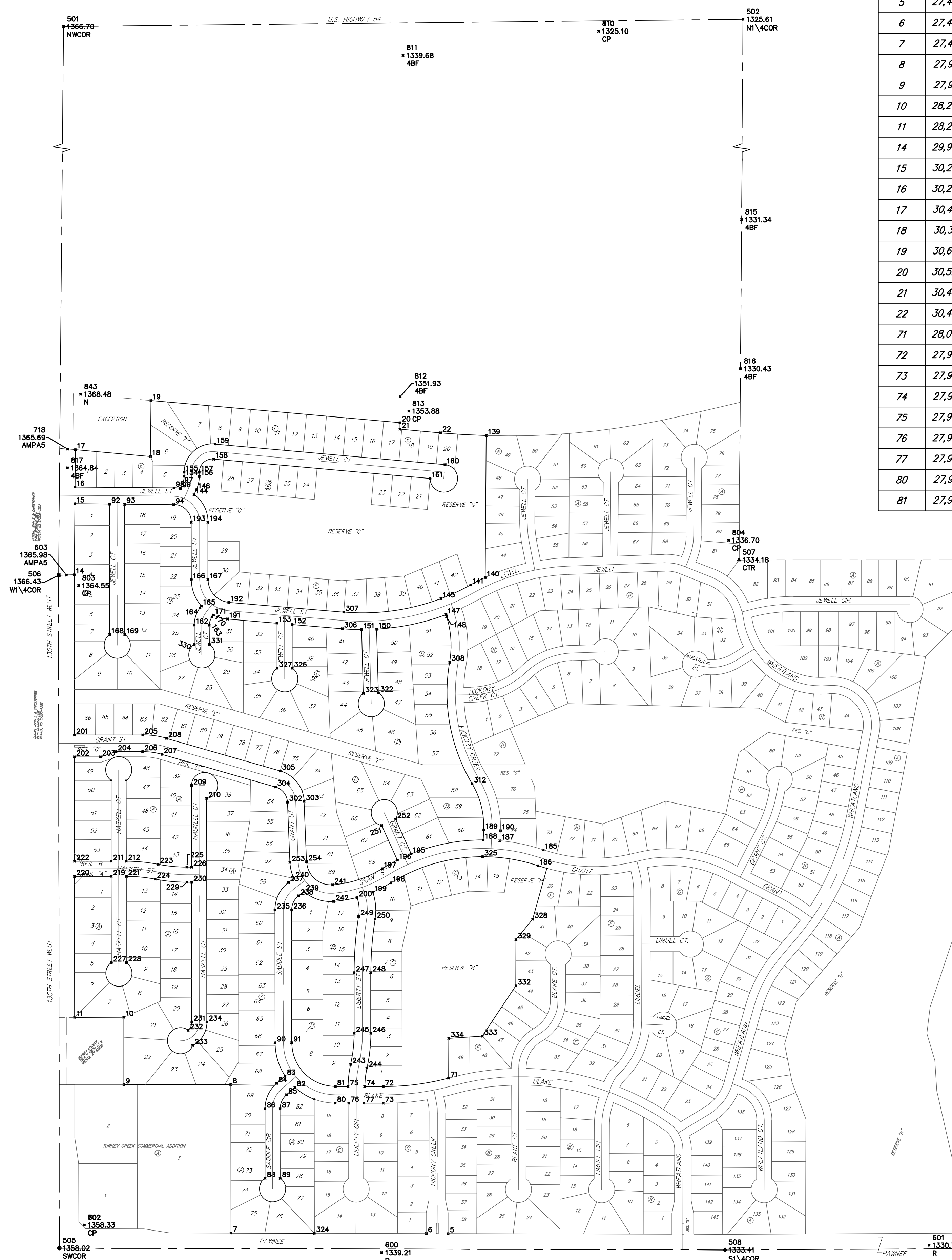


- = #4 REBAR W/ "BAUGHMAN" CAP (SET)
- ◇ = BOLT OVER STONE (FOUND)
- = 1/2" IRON IN THIMBLE (FOUND)
- △ = 1" IRON IN BROKEN STONE (FOUND)
- = #5 REBAR IN THIMBLE (FOUND)
- ⊗ = 1" SQUARE PIN OVER STONE (FOUND)
- ⊠ = 3/4" IRON (FOUND)
- ▽ = 1/2" IRON (FOUND)

Point Table			Point Table			Point Table			Point Table			Point Table		
Point #	Northing	Easting	Point #	Northing	Easting	Point #	Northing	Easting	Point #	Northing	Easting	Point #	Northing	Easting
5	27,409.65	26,374.75	82	27,970.70	25,786.25	151	29,730.05	26,042.35	189	28,960.37	26,511.65	220	28,782.00	24,939.20
6	27,409.88	26,290.75	83	28,014.66	25,748.42	152	29,749.70	25,775.56	190	28,957.39	26,575.59	221	28,782.19	25,138.20
7	27,411.88	25,540.53	84	27,986.71	25,715.93	153	29,754.62	25,717.56	191	29,770.78	25,527.23	222	28,840.00	24,939.14
8	27,981.91	25,539.98	85	27,942.74	25,753.76	154	30,319.17	25,360.39	192	29,834.55	25,532.64	223	28,828.31	25,260.40
9	27,981.51	25,129.18	86	27,888.80	25,671.07	155	30,335.13	25,360.53	193	30,142.36	25,387.87	224	28,771.41	25,249.19
10	28,240.67	25,128.92	87	27,888.85	25,729.07	156	30,318.65	25,418.38	194	30,142.43	25,451.87	225	28,817.53	25,371.39
11	28,240.49	24,939.72	88	27,622.15	25,671.33	157	30,334.60	25,418.53	195	28,868.09	26,233.08	226	28,817.55	25,389.16
14	29,940.46	24,938.07	89	27,622.21	25,729.33	158	30,384.94	25,474.06	196	28,844.22	26,180.23	227	28,450.52	25,080.52
15	30,213.73	24,940.55	90	28,142.58	25,709.82	159	30,442.71	25,479.22	197	28,811.46	26,121.63	228	28,450.58	25,138.52
16	30,277.72	24,941.13	91	28,142.65	25,773.82	160	30,363.75	26,363.22	198	28,757.09	26,155.39	229	28,759.53	25,371.45
17	30,421.04	24,942.43	92	30,212.52	25,073.80	161	30,310.67	26,305.50	199	28,721.09	26,085.33	230	28,759.55	25,389.22
18	30,395.11	25,231.07	93	30,212.00	25,131.80	162	29,747.64	25,399.26	200	28,700.51	26,024.73	231	28,222.36	25,389.74
19	30,610.28	25,233.01	94	30,210.29	25,320.49	163	29,747.70	25,457.26	201	29,325.00	24,938.67	232	28,190.53	25,375.84
20	30,524.78	26,190.13	95	30,274.29	25,321.06	164	29,813.57	25,421.38	202	29,241.00	24,938.75	233	28,132.55	25,393.36
21	30,499.70	26,189.92	96	30,271.74	25,345.71	165	29,820.82	25,426.86	203	29,241.09	25,038.75	234	28,222.42	25,447.74
22	30,485.79	26,345.67	97	30,290.96	25,354.26	166	29,922.08	25,388.09	204	29,261.15	25,098.73	235	28,653.07	25,709.32
71	28,006.87	26,376.95	139	30,475.38	26,521.52	167	29,922.15	25,452.09	205	29,325.25	25,200.87	236	28,653.14	25,773.32
72	27,974.32	26,125.45	140	29,929.91	26,517.25	168	29,710.86	25,074.29	206	29,261.25	25,200.94	237	28,758.16	25,761.27
73	27,910.32	26,125.28	141	29,901.66	26,461.55	169	29,710.92	25,132.29	207	29,250.82	25,275.24	238	28,707.27	25,800.08
74	27,974.51	26,054.26	144	30,248.17	25,398.71	170	29,778.55	25,467.61	208	29,312.33	25,292.93	239	28,723.24	25,821.02
75	27,974.68	25,990.26	145	29,848.82	26,347.31	171	29,785.79	25,473.09	209	29,130.90	25,388.86	240	28,774.13	25,782.20
76	27,910.67	25,993.09	146	30,267.38	25,407.25	185	28,883.51	26,740.78	210	29,081.60	25,446.91	241	28,749.17	25,930.83
77	27,910.52	26,051.09	147	29,787.72	26,366.65	186	28,822.84	26,720.40	211	28,840.13	25,080.14	242	28,685.35	25,935.65
80	27,910.81	25,941.20	148	29,779.67	26,369.20	187	28,918.61	26,573.78	212	28,840.19	25,138.14	243	28,060.20	26,000.19
81	27,974.81	25,941.37	150	29,731.65	26,100.33	188	28,921.58	26,509.85	219	28,782.13	25,080.20	244	28,045.70	26,062.52



Point Table		
Point #	Northing	Easting
245	28,179.19	26,013.79
246	28,179.25	26,077.79
247	28,412.28	26,013.56
248	28,412.34	26,077.56
249	28,628.34	26,030.79
250	28,618.13	26,093.97
251	28,977.36	26,120.08
252	29,001.24	26,172.94
253	28,835.42	25,766.95
254	28,838.06	25,830.90
302	29,067.36	25,757.36
303	29,070.01	25,821.31
304	29,125.31	25,711.82
305	29,186.82	25,729.51
306	29,733.34	25,968.21
307	29,797.11	25,973.62
308	29,605.20	26,380.86
312	29,138.16	26,467.05
322	29,486.77	26,107.07
323	29,485.18	26,049.09
324	27,411.02	25,860.53
325	28,857.59	26,506.87
326	29,581.59	25,775.72
327	29,581.53	25,717.72
328	28,617.63	26,699.88

Point Table		
Point #	Northing	Easting
329	28,538.87	26,635.77
330	29,673.07	25,399.33
331	29,673.12	25,457.33
332	28,361.39	26,635.29
333	28,168.19	26,506.60
334	28,159.70	26,377.36

Point Table			
Point #	Northing	Easting	Desc.
501	32,584.25	24,901.96	NWCOR
502	32,612.53	27,513.28	N1\4COR
503	29,999.21	30,061.99	E1\4COR
504	27,360.78	29,997.18	SECOR
505	27,353.64	24,880.59	SWCOR
506	29,939.11	24,878.07	W1\4COR
507	29,997.85	27,492.82	CTR
508	27,346.81	27,439.22	ST\4COR
600	27,336.68	26,119.57	R
601	27,364.65	28,223.19	R
602	29,803.90	30,075.28	N
603	29,939.45	24,908.10	AMPA5
606	29,999.06	30,022.07	ARM5
702	27,442.50	24,976.73	CP
710	32,566.65	26,958.64	CP
718	30,423.52	24,912.64	AMPA5
801	27,376.51	29,966.08	PK
802	27,442.50	24,976.73	CP
803	29,899.34	24,954.88	CP
804	30,073.40	27,453.20	CP
810	32,566.64	26,958.64	CP
811	32,473.94	26,206.49	ABF
812	30,624.50	26,190.89	ABF
813	30,569.47	26,223.82	CP
815	31,305.15	27,502.90	ABF
816	30,731.98	27,498.38	ABF
817	30,351.39	24,911.86	ABF
822	27,390.46	30,036.25	BMCOW
843	30,634.08	24,962.62	N
845	27,365.81	28,315.31	BMCOW



**BAUGHMAN  
COMPANY**

315 Ellis St.  
Wichita, KS 67211  
316-262-7271  
BaughmanCo.com

---

TURKEY CREEK 4TH ADDITION  
PHASE 1A

**COORDINATES**

Street Paving Improvements

PROJECT NUMBER:  
472-2020-085617

DESIGN: DMV DRAWN: JAK

DATE: Apr. 3, 2021

SHEET OF  
21 22

File: E:\Projects\Turkey Creek 4th Addition\Phase 1A\Site\20-01-E45721\_Coord.dwg