

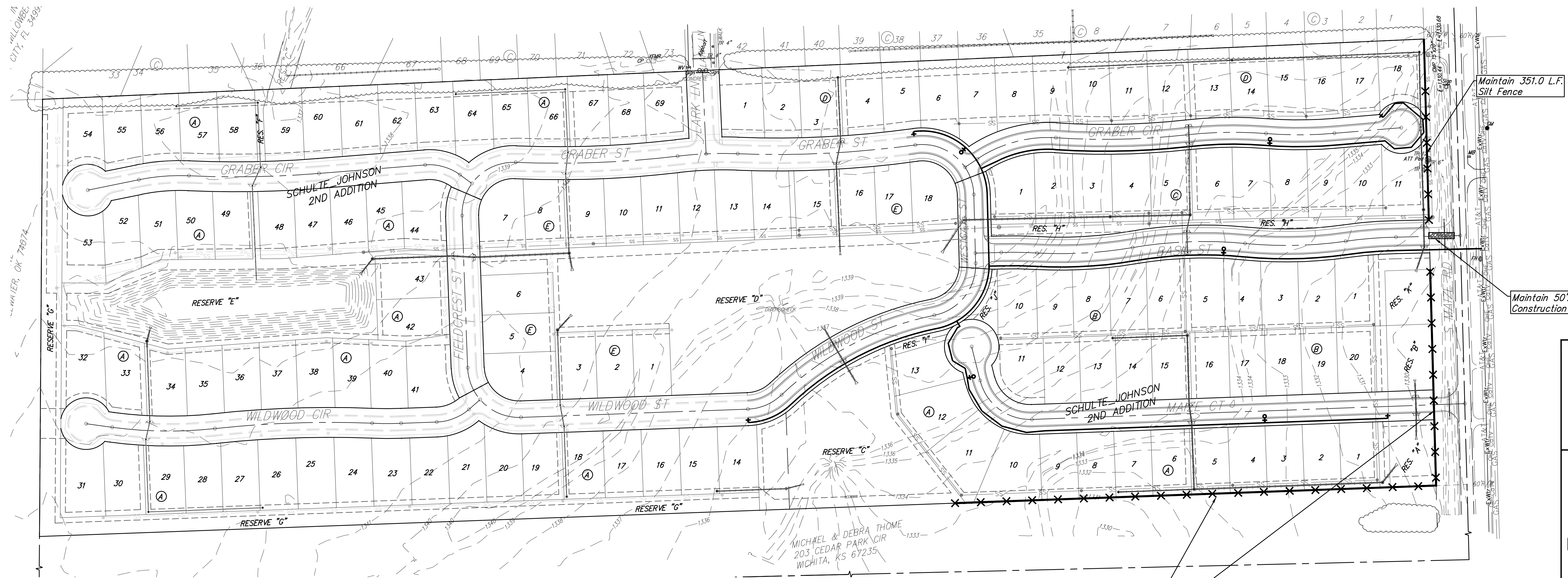
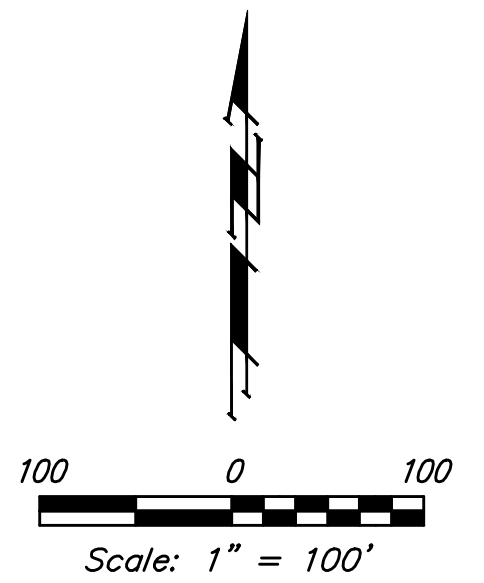
BENCHMARKS:
 CUT OFF "T"-POST, DOWN 0.25'
 13.5' WEST OF POWER POLE
 30' SOUTH OF FIRE HYDRANT
 +/- 200' SOUTH OF CENTERLINE
 DRIVE TO HOUSE # 2816 S MAIZE RD.
 ELEV. = 1328.386 (NAVD 88)

SQUARE CUT WITH + IN SW WINGWALL
 OF THE SOUTHERNMOST OF THREE
 CONCRETE DITCH CHECKS
 +/- 1125' WEST OF CENTERLINE S.
 MAIZE RD, BEHIND HOUSE #2951 S
 MAIZE RD.
 ELEV. = 1332.383 (NAVD88)

--- 1350 --- Existing Grade

EROSION CONTROL LEGEND

✕ - SILT FENCING



EROSION CONTROL MEASURE	INSTALL	MAINTAIN
CONSTRUCTION ENTRANCE (EA)	0	1
SILT FENCE (LF)	0	1,706
DITCH CHECKS (EA)	0	0
CURB INLET PROTECTION (EA)	0	0
DROP INLET PROTECTION (EA)	0	0
EROSION CONTROL MAT (SY)	0	0
MULCH WATTLE SED. BARRIER (LF)	0	0
EROSION CONTROL BERM (LF)	0	0

* ALL EXISTING BMPs INCLUDING CONSTRUCTION ENTRANCE, SEDIMENT BARRIERS, SILT FENCE, CUT-OFF TRENCH, AND EROSION CONTROL MAT SHALL BE MAINTAINED AND REPAIRED IF NECESSARY.

Contractor shall make sure all erosion control is in place before project is accepted. This plan represents the minimum standard. Any additional erosion control measures shall be installed by the Contractor as needed.

BAUGHMAN COMPANY

315 Ellis St.
 Wichita, KS 67211
 316-262-7271
 BaughmanCo.com

SCHULTE-JOHNSON 2ND ADD. - PHASE I

EROSION CONTROL

WATER DISTRIBUTION SYSTEM

PROJECT NUMBER:
448-2019-009457

DESIGN: AEG DRAWN: HJW

DATE: April 12, 2021

SHEET OF
11 18

File: C:\Projects\Schulte-Johnson 2nd Addition\Engineering\Phase 1\WTRWTR Plans.dwg