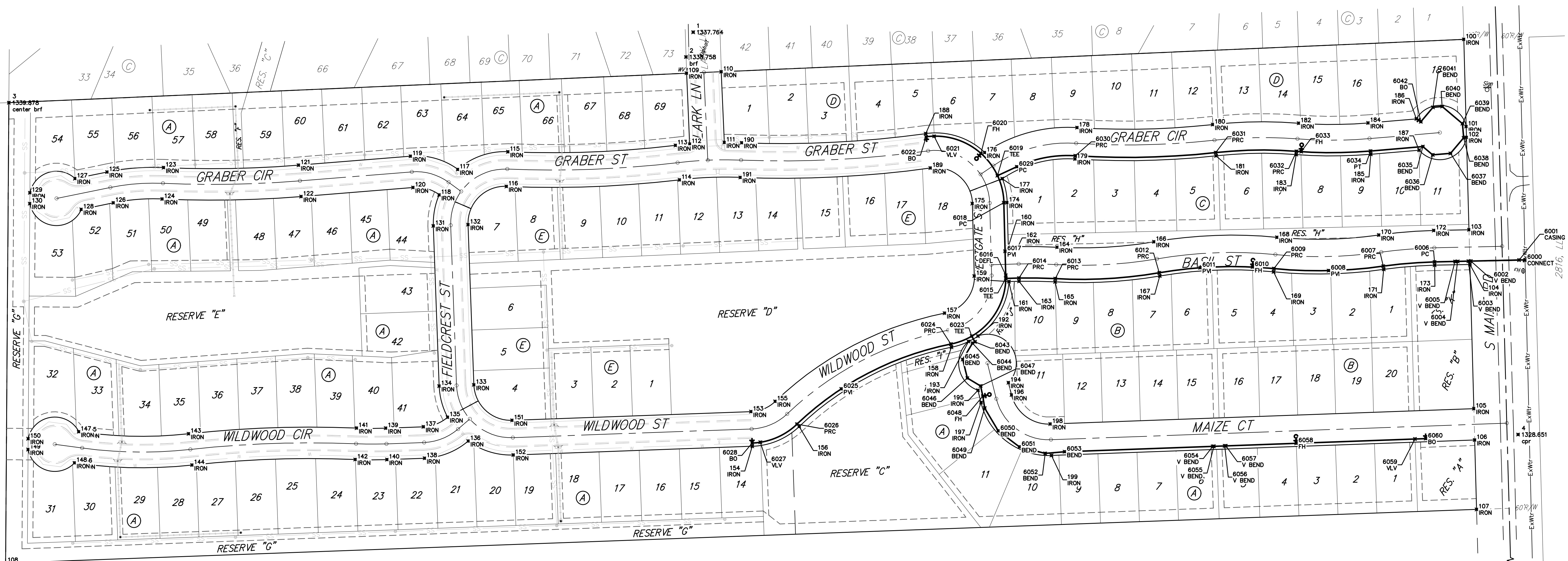
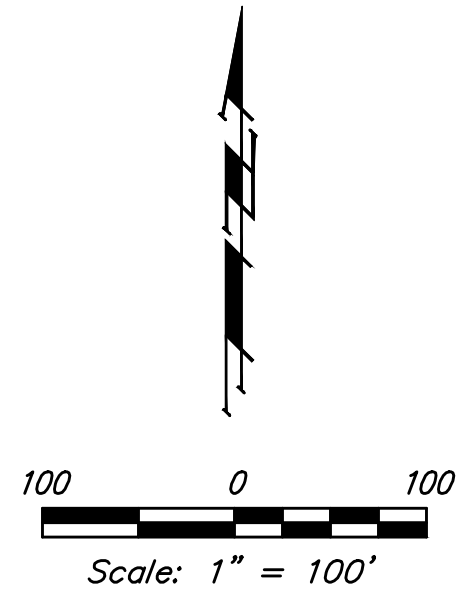


**BENCHMARKS:**  
 CUT OFF "T"-POST, DOWN 0.25'  
 13.5' WEST OF POWER POLE  
 30' SOUTH OF FIRE HYDRANT  
 +/- 200' SOUTH OF CENTERLINE  
 DRIVE TO HOUSE # 2816 S MAIZE RD.  
 ELEV. = 1328.386 (NAVD 88)

SQUARE CUT WITH + IN SW WINGWALL  
 OF THE SOUTHERNMOST OF THREE  
 CONCRETE DITCH CHECKS  
 +/- 1125' WEST OF CENTERLINE S.  
 MAIZE RD, BEHIND HOUSE #2951 S  
 MAIZE RD.  
 ELEV. = 1332.383 (NAVD88)



Point #	Northing	Easting	Description
1	1,668,599.79	1,611,470.22	
2	1,669,554.19	1,611,456.84	brf
3	1,669,469.79	1,610,208.70	center brf
4	1,668,857.63	1,612,990.74	cpr
100	1,669,586.64	1,612,890.76	IRON
101	1,669,425.88	1,612,895.13	IRON
102	1,669,405.88	1,612,895.67	IRON
103	1,669,235.51	1,612,900.30	IRON
104	1,669,171.53	1,612,902.04	IRON
105	1,668,905.53	1,612,909.26	IRON
106	1,668,847.55	1,612,910.84	IRON
107	1,668,719.58	1,612,914.31	IRON
108	1,668,620.72	1,610,202.69	IRON
109	1,669,524.22	1,611,458.00	IRON
110	1,669,527.00	1,611,521.94	IRON
111	1,669,396.47	1,611,527.63	IRON
112	1,669,393.68	1,611,463.69	IRON
113	1,669,391.03	1,611,437.60	IRON
114	1,669,327.48	1,611,445.13	IRON
115	1,669,379.26	1,611,128.67	IRON
116	1,669,315.32	1,611,126.00	IRON
117	1,668,346.65	1,611,036.15	IRON
118	1,669,299.77	1,611,002.00	IRON
119	1,669,371.16	1,610,949.17	IRON
120	1,669,313.35	1,610,953.82	IRON

Point #	Northing	Easting	Description
121	1,668,354.56	1,610,742.85	IRON
122	1,669,296.75	1,610,747.50	IRON
123	1,669,350.08	1,610,493.99	IRON
124	1,669,292.14	1,610,491.42	IRON
125	1,669,341.90	1,610,389.84	IRON
126	1,669,285.07	1,610,401.42	IRON
127	1,669,329.82	1,610,330.56	IRON
128	1,669,272.99	1,610,342.14	IRON
129	1,669,303.62	1,610,247.52	IRON
130	1,669,283.62	1,610,247.38	IRON
131	1,669,242.57	1,610,991.24	IRON
132	1,669,244.90	1,611,055.20	IRON
133	1,668,949.43	1,611,065.97	IRON
134	1,668,947.10	1,611,002.01	IRON
135	1,668,889.54	1,611,017.58	IRON
136	1,668,845.70	1,611,055.55	IRON
137	1,668,872.00	1,610,973.01	IRON
138	1,668,814.04	1,610,975.12	IRON
139	1,668,869.47	1,610,903.59	IRON
140	1,668,811.51	1,610,905.70	IRON
141	1,668,869.80	1,610,849.73	IRON
142	1,668,811.65	1,610,847.33	IRON
143	1,668,859.10	1,610,540.12	IRON
144	1,668,801.45	1,610,546.44	IRON
145	1,668,861.54	1,610,347.53	IRON

Point #	Northing	Easting	Description
146	1,668,804.06	1,610,339.74	IRON
147	1,668,862.90	1,610,337.49	IRON
148	1,668,805.42	1,610,329.71	IRON
149	1,668,829.97	1,610,244.18	IRON
150	1,668,949.97	1,610,244.32	IRON
151	1,668,883.96	1,611,136.40	IRON
152	1,668,820.00	1,611,138.73	IRON
153	1,668,900.00	1,611,576.76	IRON
154	1,668,836.05	1,611,579.09	IRON
155	1,668,918.80	1,611,621.26	IRON
156	1,668,872.52	1,611,665.48	IRON
157	1,669,081.56	1,611,933.76	IRON
158	1,669,018.81	1,611,946.33	IRON
159	1,669,150.08	1,611,988.38	IRON
160	1,669,203.80	1,612,050.95	IRON
161	1,669,139.81	1,612,052.14	IRON
162	1,669,204.29	1,612,069.12	IRON
163	1,669,140.32	1,612,070.86	IRON
164	1,669,203.21	1,612,141.05	IRON
165	1,669,139.32	1,612,137.39	IRON
166	1,669,213.27	1,612,319.52	IRON
167	1,669,150.19	1,612,330.34	IRON
168	1,669,221.53	1,612,546.29	IRON
169	1,669,157.84	1,612,540.09	IRON
170	1,669,225.73	1,612,734.09	IRON

Point #	Northing	Easting	Description
171	1,669,162.37	1,612,743.13	IRON
172	1,669,234.06	1,612,835.47	IRON
173	1,669,170.08	1,612,836.90	IRON
174	1,669,285.54	1,612,048.73	IRON
175	1,669,283.80	1,611,984.75	IRON
176	1,669,377.85	1,612,007.49	IRON
177	1,669,329.71	1,612,039.84	IRON
178	1,669,423.86	1,612,177.89	IRON
179	1,669,365.98	1,612,174.17	IRON
180	1,669,429.50	1,612,427.81	IRON
181	1,669,371.84	1,612,434.14	IRON
182	1,669,432.03	1,612,586.31	IRON
183	1,669,374.20	1,612,581.82	IRON
184	1,669,432.47	1,612,714.37	IRON
185	1,669,374.68	1,612,719.26	IRON
186	1,669,440.01	1,612,803.40	IRON
187	1,669,382.22	1,612,808.29	IRON
188	1,669,412.71	1,611,898.71	IRON
189	1,669,349.31	1,611,907.47	IRON
190	1,669,395.90	1,611,559.59	IRON
191	1,669,331.95	1,611,557.14	IRON
192	1,669,039.36	1,611,995.05	IRON
193	1,669,029.34	1,611,977.74	IRON
194	1,668,953.33	1,612,051.40	IRON
195	1,668,939.24	1,611,993.14	IRON

Point #	Northing	Easting	Description
196	1,668,930.78	1,612,057.05	IRON
197	1,668,916.69	1,612,000.78	IRON
198	1,668,877.08	1,612,128.50	IRON
199	1,668,819.12	1,612,130.62	IRON

Point #	Northing	Easting	Description
6000	1,669,179.81	1,613,003.69	CONNECT
6001	1,669,179.56	1,612,992.70	CASING
6002	1,669,177.58	1,612,903.79	V BEND
6003	1,669,177.48	1,612,899.32	V BEND
6004	1,669,177.03	1,612,879.32	V BEND
6005	1,669,176.92	1,612,874.56	V BEND
6006	1,669,176.08	1,612,836.77	PC
6007	1,669,168.31	1,612,742.28	PC
6008	1,669,160.04	1,612,641.61	PH
6009	1,669,163.81	1,612,540.67	PC
6010	1,669,166.65	1,612,501.47	FH
6011	1,669,165.36	1,612,404.81	PH
6012	1,669,156.11	1,612,329.32	PC
6013	1,669,145.31	1,612,137.73	PC
6014	1,669,146.31	1,612,070.70	PC
6015	1,669,145.65	1,612,046.38	TEE
6016	1,669,151.66	1,612,046.36	DEFL
6017	1,669,195.86	1,612,045.16	PH
6018	1,669,285.37	1,612,042.73	PC
6019	1,669,335.12	1,612,031.01	TEE
6020	1,669,375.97	1,612,000.66	FH
6021	1,669,407.93	1,611,914.35	VLV
6022	1,669,406.77	1,611,899.53	BO
6023	1,669,039.21	1,611,983.58	TEE
6024	1,669,024.69	1,611,945.16	PC

Point #	Northing	Easting	Description
6025	1,668,941.93	1,611,743.22	PH
6026	1,668,876.86	1,611,661.33	PC
6027	1,668,843.50	1,611,593.94	VLV
6028	1,668,842.04	1,611,578.87	BO
6029	1,669,351.70	1,612,066.64	PC
6030	1,669,371.97	1,612,174.55	PC
6031	1,669,377.81	1,612,433.49	PC
6032	1,669,380.18	1,612,582.28	PC
6033	1,669,379.55	1,612,591.02	FH
6034	1,669,380.66	1,612,718.76	PT
6035	1,669,388.83	1,612,815.30	BEND
6036	1,669,373.58	1,612,833.38	BEND
6037	1,669,376.35	1,612,866.18	BEND
6038	1,669,405.08	1,612,890.42	BEND
6039	1,669,431.28	1,612,988.20	BEND
6040	1,669,462.78	1,612,850.87	BEND
6041	1,669,461.35	1,612,833.94	BEND
6042	1,669,434.67	1,612,811.42	BO
6043	1,669,028.72	1,611,989.65	BEND
6044	1,669,026.26	1,611,985.08	BEND
6045	1,668,996.06	1,611,966.98	BEND
6046	1,668,968.91	1,611,975.54	BEND
6047	1,668,947.27	1,611,999.97	BEND
6048	1,668,928.31	1,612,004.06	FH
6049	1,668,906.53	1,612,007.57	BEND

Point #	Northing	Easting	Description
6050	1,668,864.40	1,612,032.46	BEND
6051	1,668,835.01	1,612,071.58	BEND
6052	1,668,822.82	1,612,118.97	BEND
6053	1,668,826.01	1,612,154.92	BEND
6054	1,668,835.96	1,612,427.93	V BEND
6055	1,668,836.03	1,612,429.93	V BEND
6056	1,668,836.76	1,612,448.92	V BEND
6057	1,668,836.83	1,612,451.92	V BEND
6058	1,668,841.57	1,612,581.83	FH
6059	1,668,849.54	1,612,800.69	VLV
6060	1,668,850.27	1,612,820.67	BO



**BAUGHMAN  
COMPANY**

315 Ellis St.  
Wichita, KS 67211  
316-262-7271  
BaughmanCo.com

---

SCHULTE-JOHNSON 2ND  
ADD. - PHASE I

---

**COORDINATES**

---

WATER DISTRIBUTION  
SYSTEM

---

PROJECT NUMBER:  
448-2019-009457

---

DESIGN: AEG DRAWN: HJW

---

DATE: April 12, 2021

---

SHEET OF  
17 18

File: C:\Projects\Schulte-Johnson 2nd Addition\Engineering\Phase 1\WTR\WTR Plans.dwg