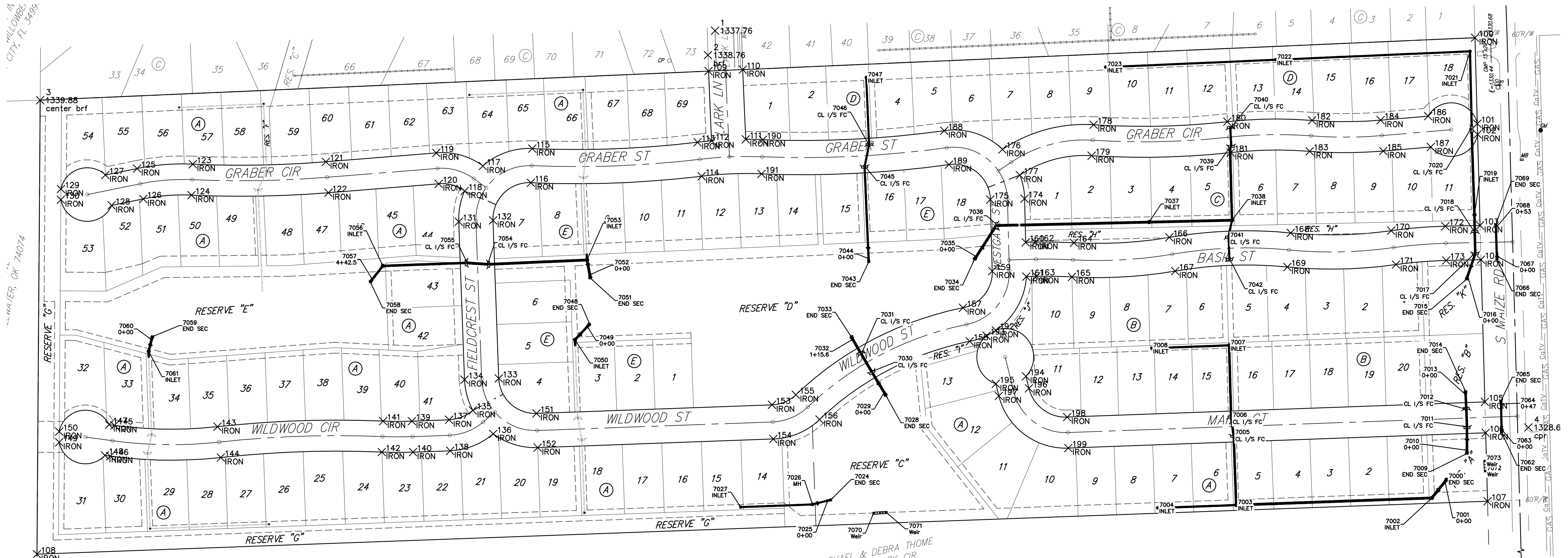
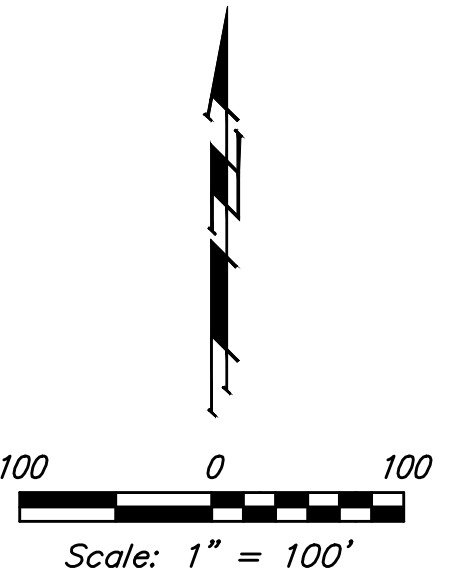


BENCHMARKS:
 CUT OFF "T"-POST, DOWN 0.25'
 13.5' WEST OF POWER POLE
 30' SOUTH OF FIRE HYDRANT
 +/- 200' SOUTH OF CENTERLINE
 DRIVE TO HOUSE # 2816 S MAIZE RD.
 ELEV. = 1328.386 (NAVD 88)

SQUARE CUT WITH + IN SW WINGWALL
 OF THE SOUTHERNMOST OF THREE
 CONCRETE DITCH CHECKS
 +/- 1125' WEST OF CENTERLINE S.
 MAIZE RD, BEHIND HOUSE #2951 S
 MAIZE RD.
 ELEV. = 1332.383 (NAVD88)



Point #	Northing	Easting	Description
1	1,669,599.79	1,611,470.22	brf
2	1,669,554.19	1,611,456.84	
3	1,669,469.79	1,610,208.70	center brf
4	1,668,857.63	1,612,990.74	cpr
100	1,669,586.64	1,612,890.76	IRON
101	1,669,425.88	1,612,895.13	IRON
102	1,669,405.88	1,612,895.67	IRON
103	1,669,235.51	1,612,900.30	IRON
104	1,669,171.53	1,612,902.04	IRON
105	1,668,905.53	1,612,909.26	IRON
106	1,668,847.55	1,612,910.84	IRON
107	1,668,719.58	1,612,914.31	IRON
108	1,668,620.72	1,610,202.69	IRON
109	1,669,524.22	1,611,458.00	IRON
110	1,669,527.00	1,611,521.94	IRON
111	1,669,396.47	1,611,527.63	IRON
112	1,669,393.68	1,611,463.69	IRON
113	1,669,391.03	1,611,437.60	IRON
114	1,669,327.48	1,611,445.13	IRON
115	1,669,379.26	1,611,128.67	IRON

Point #	Northing	Easting	Description
116	1,669,315.32	1,611,126.00	IRON
117	1,669,346.65	1,611,036.15	IRON
118	1,669,299.77	1,611,002.00	IRON
119	1,669,371.16	1,610,948.17	IRON
120	1,669,313.35	1,610,953.82	IRON
121	1,669,354.56	1,610,742.85	IRON
122	1,669,296.75	1,610,747.50	IRON
123	1,669,350.08	1,610,493.99	IRON
124	1,669,292.14	1,610,491.42	IRON
125	1,669,341.90	1,610,389.84	IRON
126	1,669,285.07	1,610,401.42	IRON
127	1,669,329.82	1,610,330.56	IRON
128	1,669,272.99	1,610,342.14	IRON
129	1,669,303.62	1,610,247.52	IRON
130	1,669,283.62	1,610,247.38	IRON
131	1,669,242.57	1,610,991.24	IRON
132	1,669,244.90	1,611,055.20	IRON
133	1,668,949.43	1,611,065.97	IRON
134	1,668,947.10	1,611,002.01	IRON
135	1,668,889.54	1,611,017.58	IRON

Point #	Northing	Easting	Description
136	1,668,845.70	1,611,055.55	IRON
137	1,668,872.00	1,610,973.01	IRON
138	1,668,914.04	1,610,975.12	IRON
139	1,668,869.47	1,610,903.59	IRON
140	1,668,811.51	1,610,905.70	IRON
141	1,668,869.60	1,610,849.73	IRON
142	1,668,811.65	1,610,847.33	IRON
143	1,668,859.10	1,610,540.12	IRON
144	1,668,801.45	1,610,546.44	IRON
145	1,668,861.54	1,610,347.53	IRON
146	1,668,804.06	1,610,339.74	IRON
147	1,668,862.90	1,610,337.49	IRON
148	1,668,805.42	1,610,329.71	IRON
149	1,668,829.97	1,610,244.18	IRON
150	1,668,849.97	1,610,244.32	IRON
151	1,668,883.96	1,611,136.40	IRON
152	1,668,820.00	1,611,138.73	IRON
153	1,668,900.00	1,611,576.76	IRON
154	1,668,836.05	1,611,579.09	IRON
155	1,668,918.80	1,611,621.26	IRON

Point #	Northing	Easting	Description
156	1,668,872.52	1,611,665.48	IRON
157	1,669,081.56	1,611,933.76	IRON
158	1,669,018.81	1,611,946.33	IRON
159	1,669,150.08	1,611,988.38	IRON
160	1,669,203.80	1,612,050.95	IRON
161	1,669,139.81	1,612,052.14	IRON
162	1,669,204.29	1,612,069.12	IRON
163	1,669,140.32	1,612,070.86	IRON
164	1,669,203.21	1,612,141.05	IRON
165	1,669,139.32	1,612,137.39	IRON
166	1,669,213.27	1,612,319.52	IRON
167	1,669,150.19	1,612,330.34	IRON
168	1,669,221.53	1,612,546.29	IRON
169	1,669,157.84	1,612,540.09	IRON
170	1,669,225.73	1,612,734.09	IRON
171	1,669,162.37	1,612,743.13	IRON
172	1,669,234.06	1,612,835.47	IRON
173	1,669,170.08	1,612,836.90	IRON
174	1,669,285.54	1,612,051.40	IRON
175	1,669,283.80	1,611,984.75	IRON

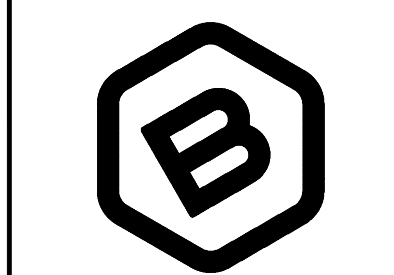
Point #	Northing	Easting	Description
176	1,669,377.85	1,612,007.49	IRON
177	1,669,329.71	1,612,039.84	IRON
178	1,669,423.86	1,612,177.89	IRON
179	1,669,365.98	1,612,174.17	IRON
180	1,669,429.50	1,612,427.81	IRON
181	1,669,371.84	1,612,434.14	IRON
182	1,669,432.03	1,612,586.31	IRON
183	1,669,374.20	1,612,581.82	IRON
184	1,669,432.47	1,612,714.37	IRON
185	1,669,374.68	1,612,719.26	IRON
186	1,669,440.01	1,612,803.40	IRON
187	1,669,382.22	1,612,808.29	IRON
188	1,669,412.71	1,611,898.71	IRON
189	1,669,349.31	1,611,907.47	IRON
190	1,669,395.90	1,611,559.59	IRON
191	1,669,331.95	1,611,557.14	IRON
192	1,669,039.36	1,611,995.05	IRON
193	1,669,029.34	1,611,977.74	IRON
194	1,668,953.33	1,612,051.40	IRON
195	1,668,939.24	1,611,995.14	IRON

Point #	Northing	Easting	Description
196	1,668,930.78	1,612,057.05	IRON
197	1,668,916.69	1,612,000.78	IRON
198	1,668,877.08	1,612,128.50	IRON
199	1,668,819.12	1,612,130.62	IRON

Point #	Northing	Easting	Description
2000	1,668,761.29	1,612,838.60	END SEC
2001	1,668,756.49	1,612,834.76	O+00
2002	1,668,725.79	1,612,810.20	INLET
2003	1,668,712.46	1,612,444.44	INLET
2004	1,668,707.10	1,612,297.54	INLET
2005	1,668,843.22	1,612,439.68	CL 1/5 FC
2006	1,668,875.41	1,612,434.92	CL 1/5 FC
2007	1,669,011.19	1,612,431.22	INLET
2008	1,669,005.91	1,612,286.31	INLET
2009	1,668,808.98	1,612,875.86	END SEC
2010	1,668,815.11	1,612,875.86	O+00
2011	1,668,859.12	1,612,875.81	CL 1/5 FC
2012	1,668,891.43	1,612,874.61	CL 1/5 FC
2013	1,668,919.08	1,612,873.31	O+00
2014	1,668,925.20	1,612,873.02	END SEC
2015	1,669,135.01	1,612,875.09	END SEC
2016	1,669,212.00	1,612,430.23	CL 1/5 FC
2017	1,669,184.13	1,612,891.27	CL 1/5 FC
2018	1,669,222.45	1,612,890.42	CL 1/5 FC
2019	1,669,255.28	1,612,889.76	INLET
2020	1,669,415.53	1,612,882.53	CL 1/5 FC
2021	1,669,561.21	1,612,881.45	INLET
2022	1,669,545.38	1,612,518.09	INLET
2023	1,669,531.53	1,612,200.39	INLET
2024	1,668,722.37	1,611,686.89	END SEC

Point #	Northing	Easting	Description
2025	1,668,720.87	1,611,680.99	O+00
2026	1,668,713.60	1,611,652.43	MH
2027	1,668,708.70	1,611,518.03	INLET
2028	1,668,717.55	1,611,789.76	END SEC
2029	1,668,922.81	1,611,786.59	O+00
2030	1,668,962.16	1,611,762.93	CL 1/5 FC
2031	1,668,995.19	1,611,743.46	CL 1/5 FC
2032	1,669,022.35	1,611,727.77	1+15.6
2033	1,669,027.67	1,611,724.70	END SEC
2034	1,669,172.07	1,611,955.12	END SEC
2035	1,669,177.18	1,611,958.53	O+00
2036	1,669,235.38	1,611,998.88	CL 1/5 FC
2037	1,669,241.69	1,612,281.61	INLET
2038	1,669,245.16	1,612,436.57	INLET
2039	1,669,394.80	1,612,435.03	CL 1/5 FC
2040	1,669,417.18	1,612,433.67	CL 1/5 FC
2041	1,669,212.00	1,612,430.23	CL 1/5 FC
2042	1,669,173.70	1,612,431.76	CL 1/5 FC
2043	1,669,167.44	1,611,757.51	END SEC
2044	1,669,173.52	1,611,757.24	O+00
2045	1,669,346.72	1,611,749.69	CL 1/5 FC
2046	1,669,385.66	1,611,768.35	CL 1/5 FC
2047	1,669,512.04	1,611,752.81	INLET
2048	1,669,051.11	1,611,235.75	END SEC
2049	1,669,046.62	1,611,231.58	O+00

Point #	Northing	Easting	Description
2050	1,669,021.67	1,611,208.43	INLET
2051	1,669,136.95	1,611,237.30	END SEC
2052	1,669,142.99	1,611,236.16	O+00
2053	1,669,170.90	1,611,230.86	INLET
2054	1,669,162.83	1,611,045.38	CL 1/5 FC
2055	1,669,165.55	1,611,006.89	CL 1/5 FC
2056	1,669,159.80	1,610,849.16	INLET
2057	1,669,134.62	1,610,829.41	4+42.5
2058	1,669,129.80	1,610,825.62	END SEC
2059	1,669,027.61	1,610,418.50	END SEC
2060	1,669,021.68	1,610,416.96	O+00
2061	1,669,000.03	1,610,411.32	INLET
2062	1,668,948.30	1,612,940.56	END SEC
2063	1,668,854.38	1,612,940.43	O+00
2064	1,668,901.37	1,612,939.44	O+47
2065	1,668,907.45	1,612,939.31	END SEC
2066	1,669,171.93	1,612,931.96	END SEC
2067	1,669,178.01	1,612,931.75	O+00
2068	1,669,230.98	1,612,929.80	O+53
2069	1,669,237.06	1,612,929.68	END SEC
2070	1,668,697.23	1,611,766.56	Weir
2071	1,668,698.67	1,611,790.52	Weir
2072	1,668,776.02	1,612,910.19	Weir
2073	1,668,795.00	1,612,909.27	Weir



BAUGHMAN COMPANY
 315 Ellis St.
 Wichita, KS 67211
 BaughmanCo.com

SCHULTE-JOHNSON
 2ND ADDITION

COORDINATES

STORMWATER DRAIN
 IMPROVEMENTS
 PROJECT NUMBER:
 468-2019-085425
 DESIGN: AEG DRAWN: HWJ
 DATE: April 12, 2021

File: C:\Projects\Schulte-Johnson\2nd Addition\Engineering\SWD\SWS Plans.dwg