

BENCHMARKS:
 CUT OFF "T"-POST, DOWN 0.25'
 13.5' WEST OF POWER POLE
 30' SOUTH OF FIRE HYDRANT
 +/- 200' SOUTH OF CENTERLINE
 DRIVE TO HOUSE # 2816 S MAIZE RD.
 ELEV. = 1328.386 (NAVD 88)

SQUARE CUT WITH + IN SW WINGWALL
 OF THE SOUTHERNMOST OF THREE
 CONCRETE DITCH CHECKS
 +/- 1125' WEST OF CENTERLINE S.
 MAIZE RD, BEHIND HOUSE #2951 S
 MAIZE RD.
 ELEV. = 1332.383 (NAVD88)

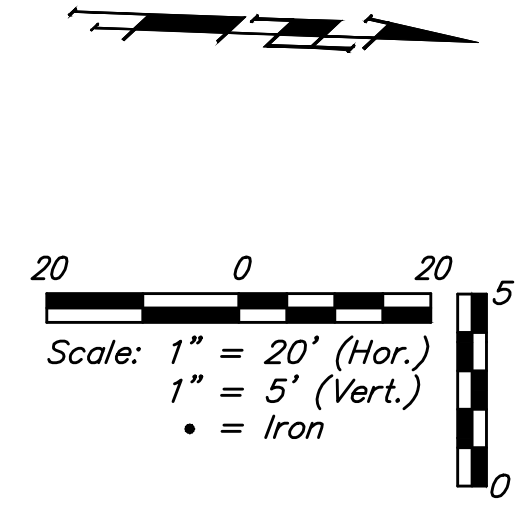
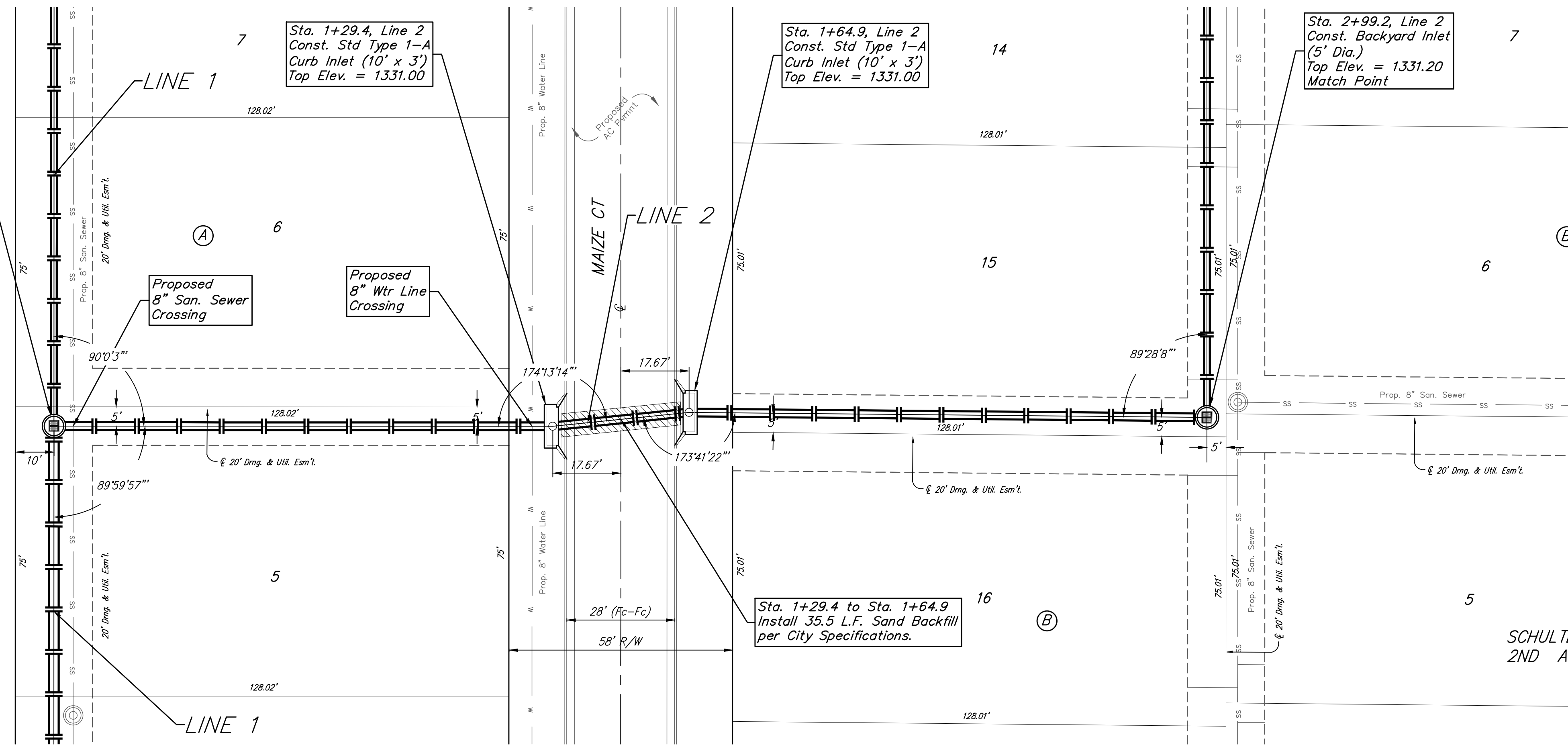
Sta. 0+00.0, Begin Line 2 =
 Sta. 4+05.3, Line 1
 Top Elev. = 1331.60

Sta. 1+29.4, Line 2
 Const. Std Type 1-A
 Curb Inlet (10' x 3')
 Top Elev. = 1331.00

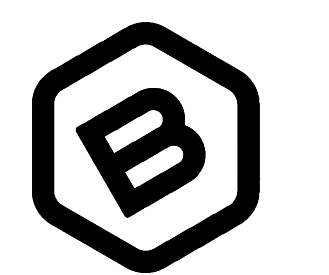
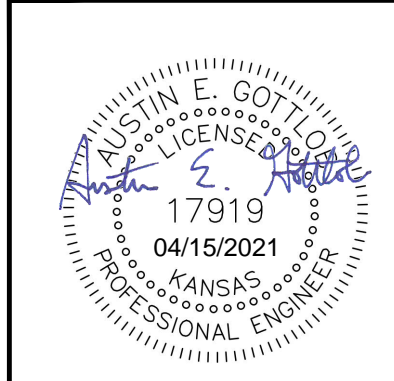
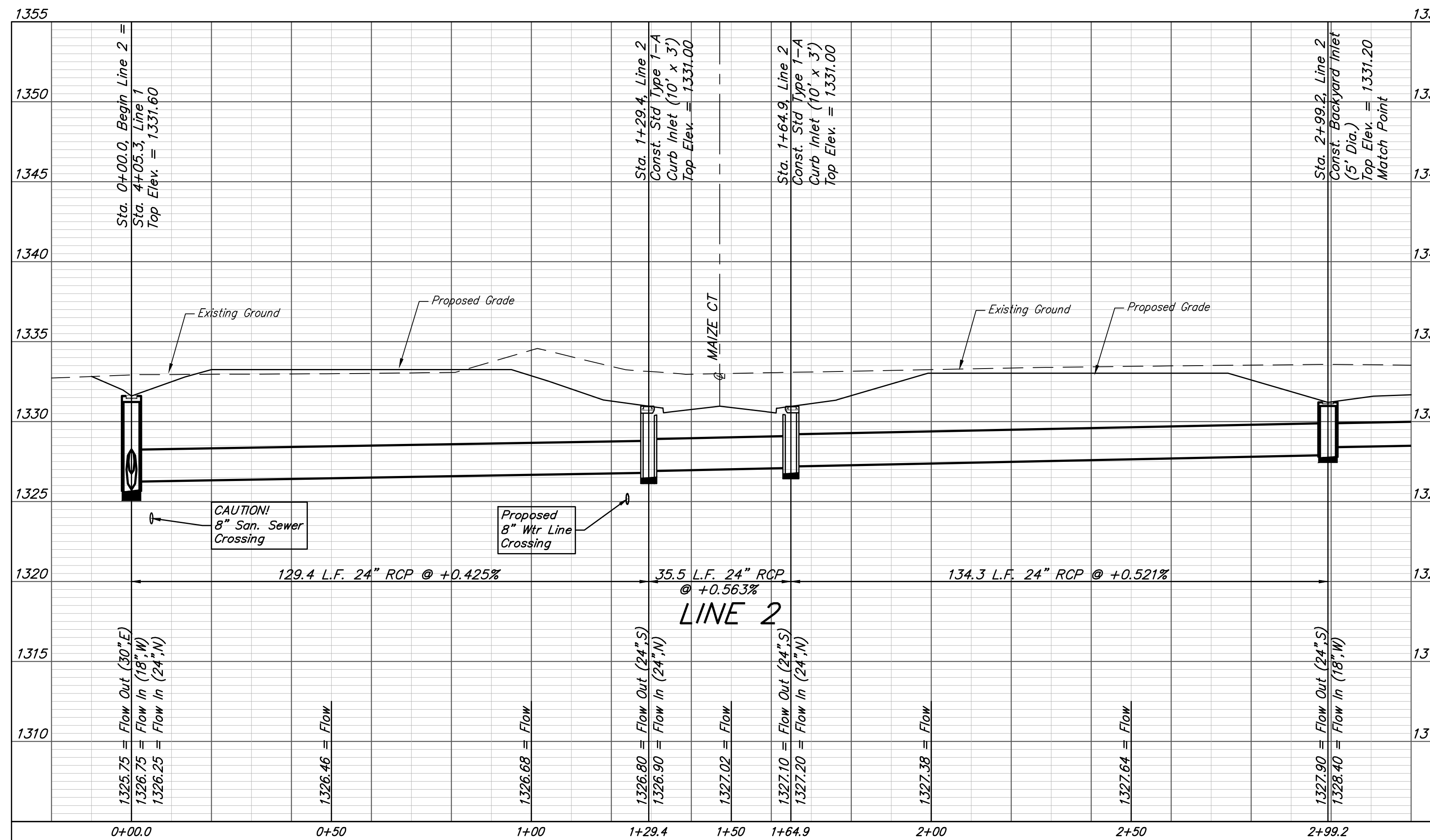
Sta. 1+64.9, Line 2
 Const. Std Type 1-A
 Curb Inlet (10' x 3')
 Top Elev. = 1331.00

Sta. 2+99.2, Line 2
 Const. Backyard Inlet
 (5' Dia.)
 Top Elev. = 1331.20
 Match Point

UNPLATTED



SCHULTE-JOHNSON
 2ND ADDITION



**BAUGHMAN
 COMPANY**
 315 Ellis St.
 Wichita, KS 67211
 316-262-7271
 BaughmanCo.com

SCHULTE-JOHNSON
 2ND ADDITION

LINE 2
 STORMWATER DRAIN
 IMPROVEMENTS

PROJECT NUMBER:
 468-2019-085425

DESIGN: AEG DRAWN: HWJ
 DATE: April 12, 2021

SHEET OF
 4 37

File: C:\Projects\Schulte-Johnson 2nd Addition\Engineering\SWD\SWS Plans.dwg