

BENCHMARKS:
 CUT OFF "T"-POST, DOWN 0.25'
 13.5' WEST OF POWER POLE
 30' SOUTH OF FIRE HYDRANT
 +/- 200' SOUTH OF CENTERLINE
 DRIVE TO HOUSE # 2816 S MAIZE RD.
 ELEV. = 1328.386 (NAVD 88)

SQUARE CUT WITH + IN SW WINGWALL
 OF THE SOUTHERNMOST OF THREE
 CONCRETE DITCH CHECKS
 +/- 1125' WEST OF CENTERLINE S.
 MAIZE RD, BEHIND HOUSE #2951 S
 MAIZE RD.
 ELEV. = 1332.383 (NAVD88)

SCHULTE-JOHNSON
 2ND ADDITION

Sta. 4+22.9, Line 4
 Top Elev. = 1334.00
 Match Point

Sta. 7+86.6, Line 4
 Const. Backyard Inlet
 Top Elev. = 1335.10
 Match Point

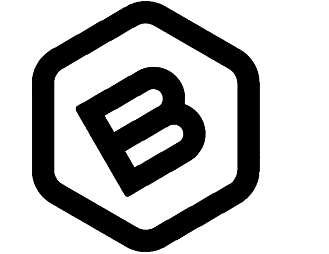
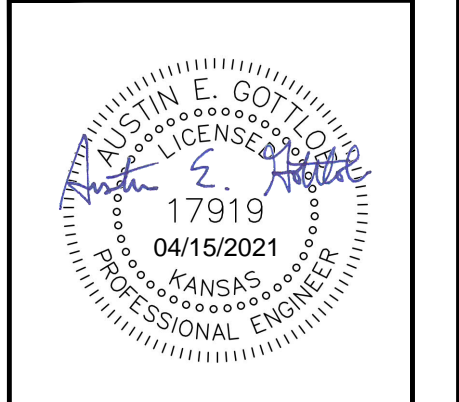
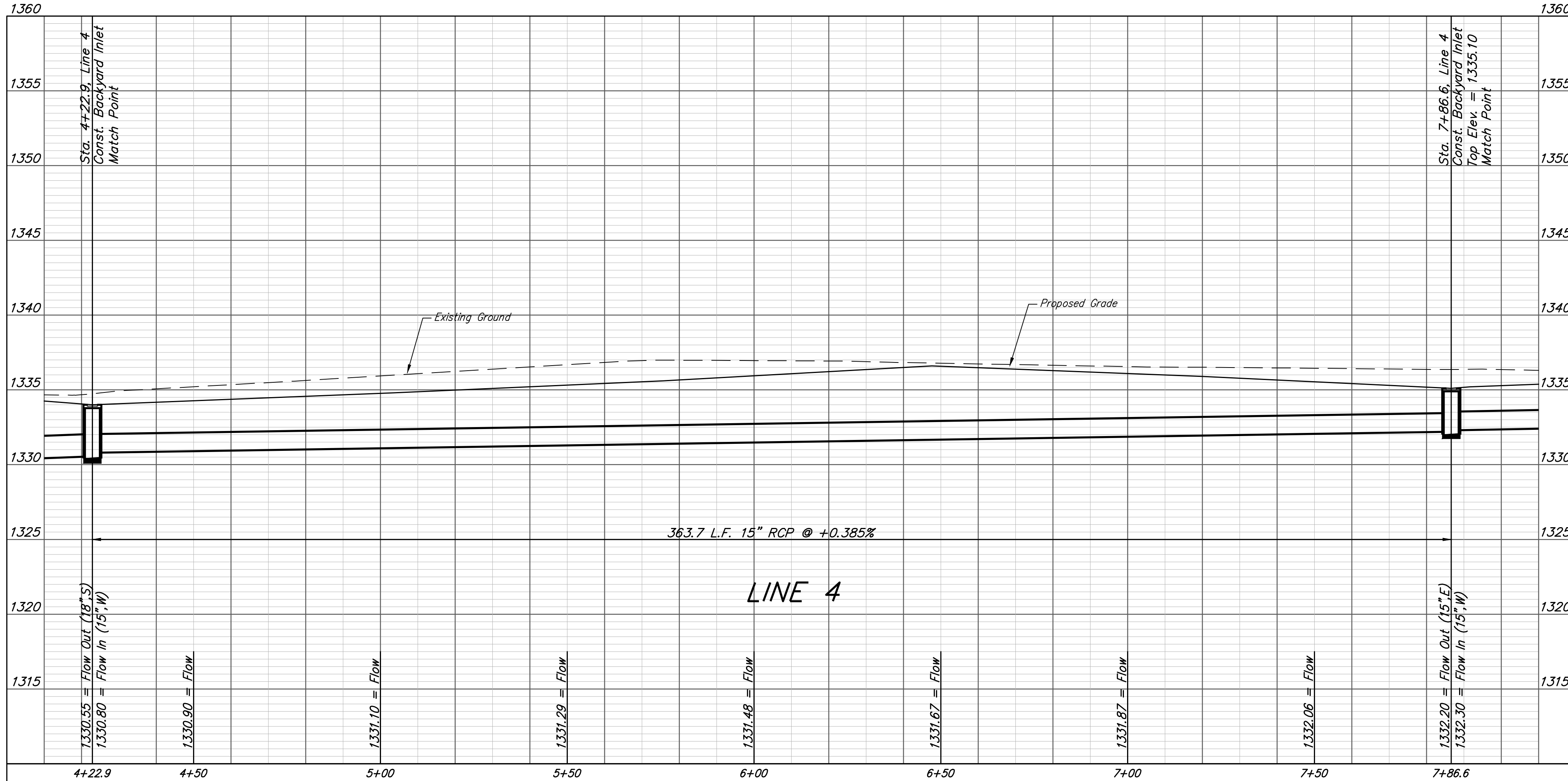
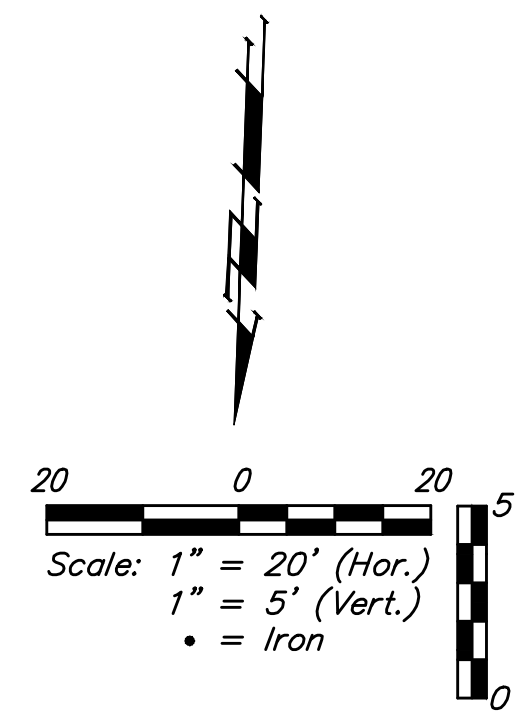
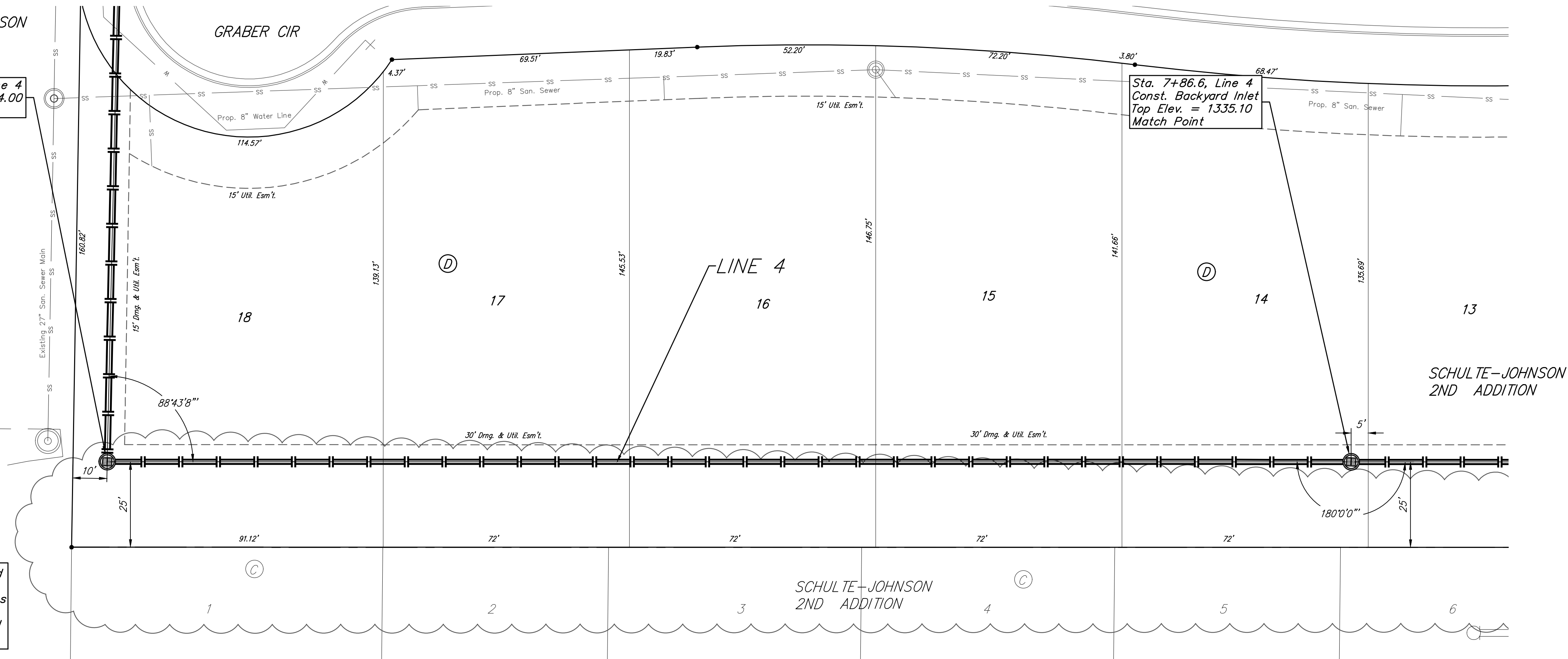
MAIZE RD

u.p.s!

Existing
 1/2" permit

Ex. CMP 15"x20"

Existing trees which are in direct conflict with proposed new construction shall be removed by the Contractor ONLY with approval of the Developer or Engineer. Trees not in direct conflict with proposed new construction shall remain and be protected from damage. Cost shall be included in bid item "Site Clearing"



**BAUGHMAN
 COMPANY**
 315 Ellis St.
 Wichita, KS 67211
 316-262-7271
 BaughmanCo.com

SCHULTE-JOHNSON
 2ND ADDITION

LINE 4

STORMWATER DRAIN
 IMPROVEMENTS

PROJECT NUMBER:
 468-2019-085425

DESIGN: AEG DRAWN: HJW
 DATE: April 12, 2021

SHEET 8 OF 37

File: C:\Projects\Schulte-Johnson 2nd Addition\Engineering\SWD\SWS Plans.dwg