

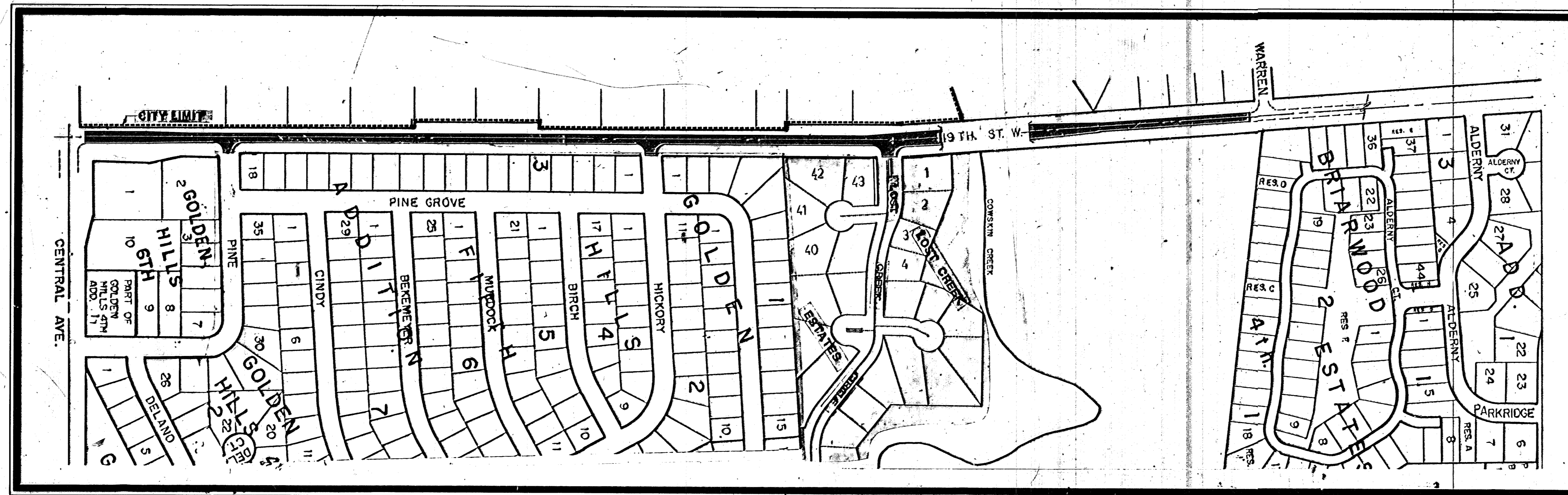
Street Improvements For
119TH STREET WEST

From the N.L. Central to the S.L. Warren
PHASE 2 - LANDSCAPING PLAN

Project No.

472-76-245-82028-000-000-001

City of Wichita, Kansas - Michael E. Lindebak, City Engineer



BENCHMARKS

- BENCH MARK #1: City Disc, 40" S. & 40" S. Centerline 119th St. West and Central. Elevation = 158.93 City Datum
- BENCH MARK #2: Square Cut in Top of Curb, S. Side Pine Street, Station 4+91.2, 60" Rb. Elevation = 158.03 City Datum
- BENCH MARK #3: S.E. Corner Cono. Drive, Station 10+13.5, 39.7' Lb. (House #801) Elevation = 158.11 City Datum
- BENCH MARK #4: N.E. Corner Cono. Drive, Station 14+91.0, 72.5' Lb. (House #810) Elevation = 159.44 City Datum
- BENCH MARK #5: Square Cut in Top of Curb N.E. Hickory Street, Sta. 13+70.8, 60.0" Rb. Elevation = 159.87 City Datum
- BENCH MARK #6: Stop Bench (50d) in P.P. Station 27+00, 49.1' Right. Elevation = 147.75 City Datum
- BENCH MARK #7: R.R. Spike in 30" Tree, Sta. 36+89, 29" Right. Elevation = 140.79 City Datum.

INDEX OF SHEETS

1	TITLE SHEET
2	LANDSCAPING ASSOC. W/ 119TH STREET PAVING
3	LANDSCAPING ASSOC. W/ 119TH STREET BRIDGE PROJECT

CAPITAL IMPROVEMENT PROJECT

BAUGHMAN COMPANY P. A.
 SURVEYING & ENGINEERING
 316/262-7271 • 315 ELLIS • WICHITA, KANSAS 67211