

INDEX OF SHEETS

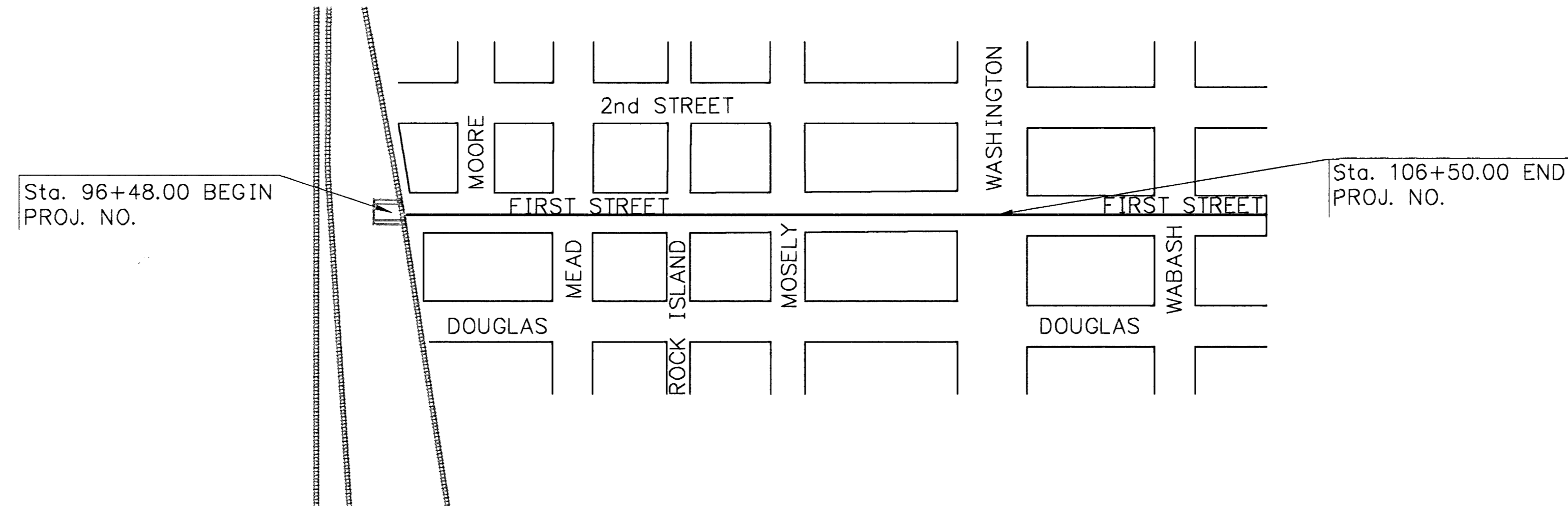
- 1. TITLE
- 2-3. TYPICAL SECTIONS
- 4-5. PLAN AND PROFILES
- 6. INTERSECTION DETAILS
- 7. PAVEMENT JOINT DETAILS
- 8. BRICK PAVER DETAIL
- 9-10. DRIVE ENTRANCES
- 11. COMBINED CURB & GUTTER
- 12. SIDEWALK DETAILS
- 13. DROP INLET
- 14. STANDARD TYPE 1 CURB INLET
- 15. DRIVEWAY GRATED INLET
- 16-17. MANHOLES
- 18. MANHOLE FRAME AND COVER DETAILS
- 19. MANHOLE ADJUSTMENT DETAILS
- 20. SCHEDULE OF INLETS AND MANHOLES
- 21. WATER ASSEMBLY DETAILS AND GENERAL NOTES
- 22. WATER LINE PLAN AND PROFILES
- 23. SUMMARY OF QUANTITIES
- 24. SEEDING
- 25. BEAUTIFICATION DETAILS
- 26. LANDSCAPE TREE LOCATIONS
- 27. LANDSCAPE SUMMARY AND NOTES
- 28. SUMMARY OF QUANTITIES - SURFACING
- 29. PAVEMENT MARKINGS
- 30. TRAFFIC CONTROL PLAN
- 31-35. CROSS SECTIONS

CITY OF WICHITA

PLAN AND PROFILE OF PROPOSED

FIRST STREET NORTH
From Santa Fe to Washington

PROJECT No. 000
City of Wichita, Sedgwick County

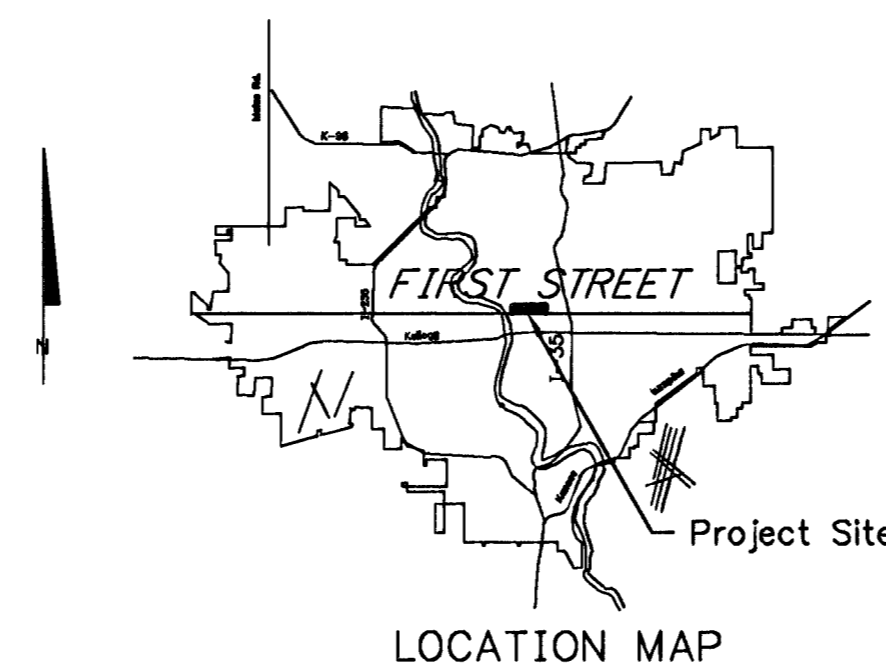


NOTE:

Traffic shall be carried through construction with a minimum of one lane open.

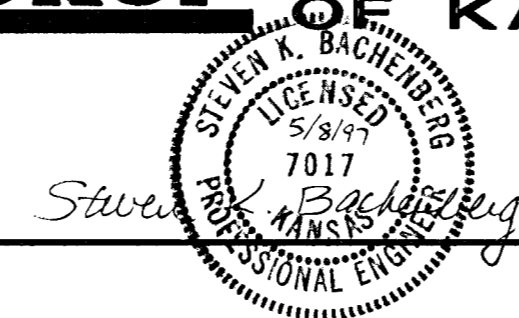
DESIGN DESIGNATION

AADT 11050 (1994)
 AADT 11000 (2014)
 DHV 1408
 D 100%
 T 2%
 V 30 MPH
 Clear Zone 2 Ft.



Prepared By

Booker ASSOCIATES INC.
OF KANSAS
 Wichita Kansas



BY	DATE
SURVEYED	
PLOTTED	
INKED	
DESIGNED	
SQUAD	