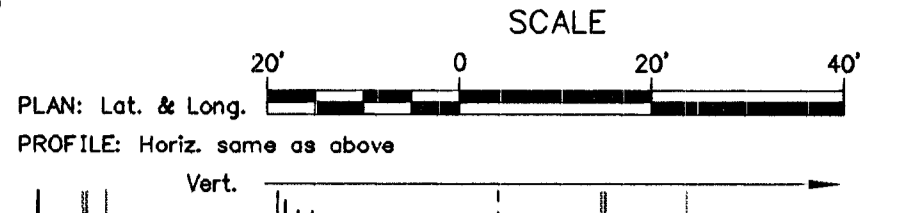


P.O.T. Sta.100+00
 1/2" Iron Pipe in Thimble
 43.6' NE to Chis. "□" on step
 35.5' S to N.W. Cor. of Dock, 151 N. Rock Is.
 37.8' N to S.W. Cor. of Bldg., 800 E, 1st St.

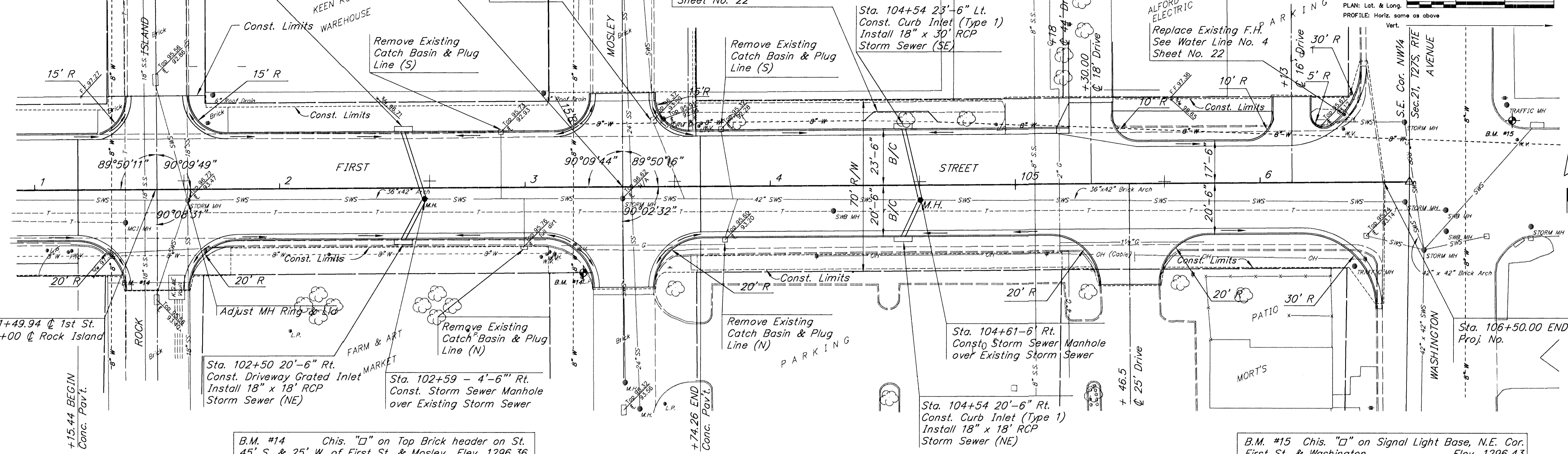
Sta. 102+50 23'-6" Lt.
 Const. Curb Inlet (Type 1)
 Install 18" x 29' RCP
 Storm Sewer (SE)

Relocate Existing Water Line
 See Water Line No. 3
 Sheet No. 22

P.O.T. Sta.106+60.95
 1/2" Iron Pipe in Thimble
 38.1' NW to Fire Hydrant
 49.7' NE to Chis. "□" S.E. Cor. Signal Light Base
 36.0' SW to PK Nail & Tin in Power Pole

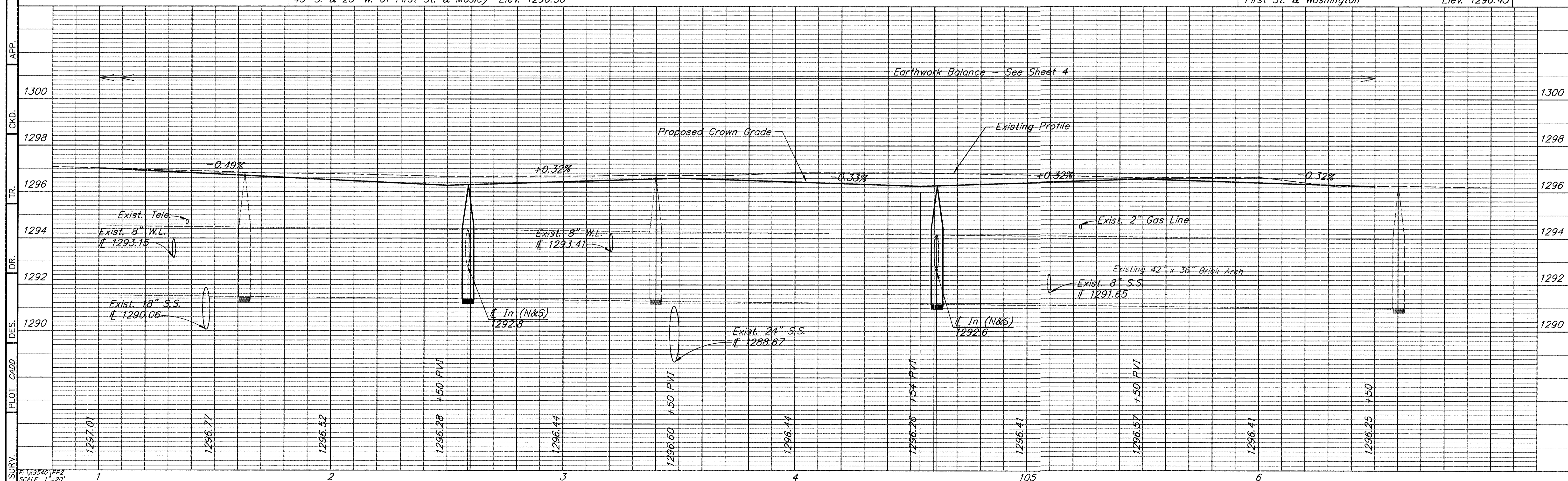


Last Plot-Date: 11/07/96 Plot-Time: 9:13 A.M.



B.M. #14 Chis. "□" on Top Brick header on St.
 45' S. & 25' W. of First St. & Mosley Elev. 1296.36

B.M. #15 Chis. "□" on Signal Light Base, N.E. Cor.
 First St. & Washington Elev. 1296.43



F. 125401 P22 SCALE: 1"=20'