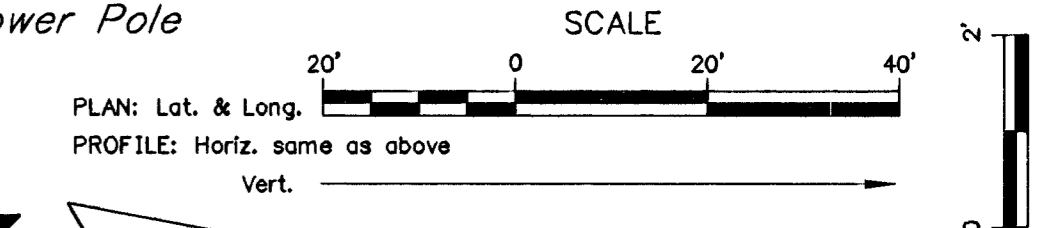
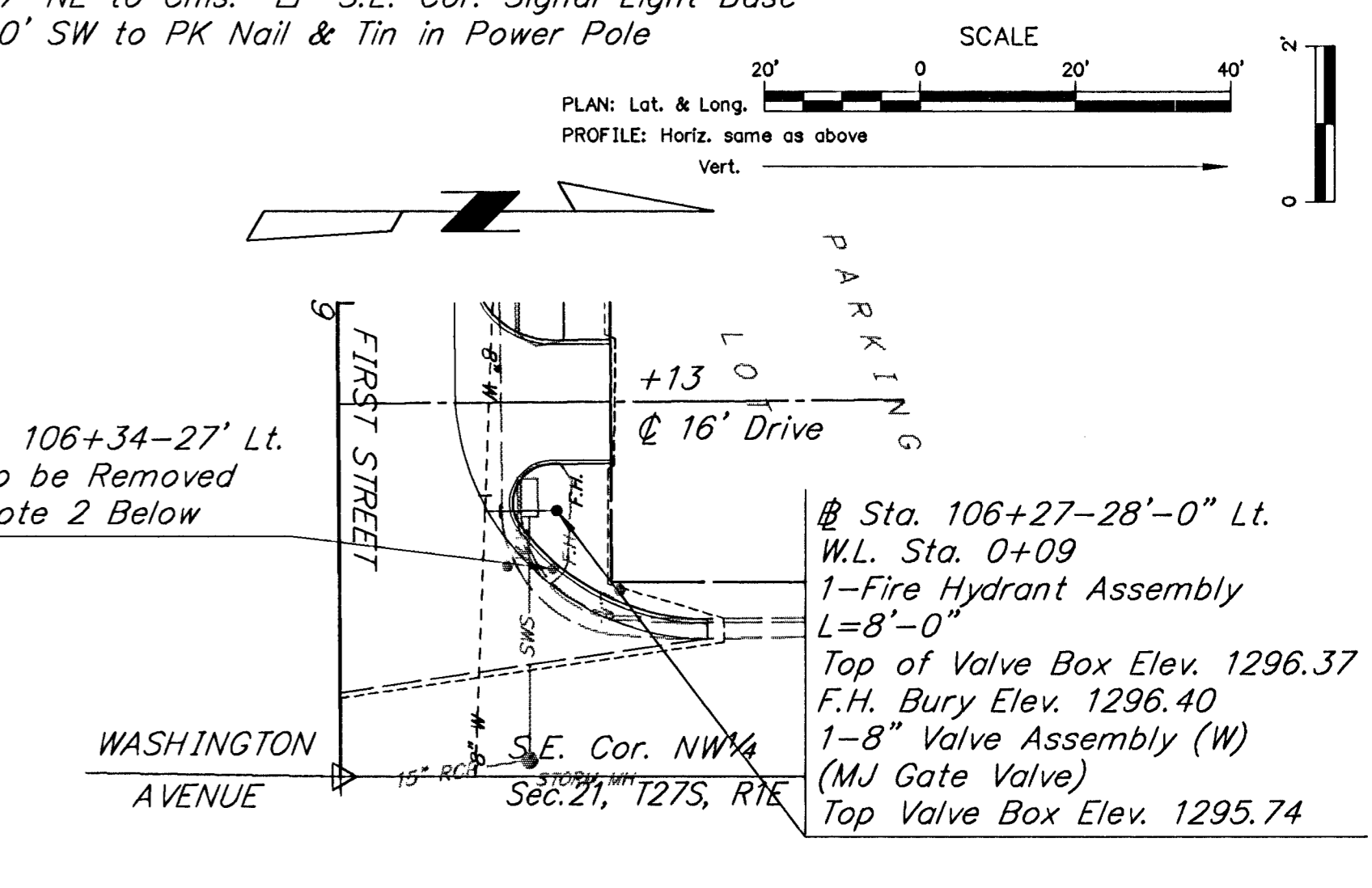
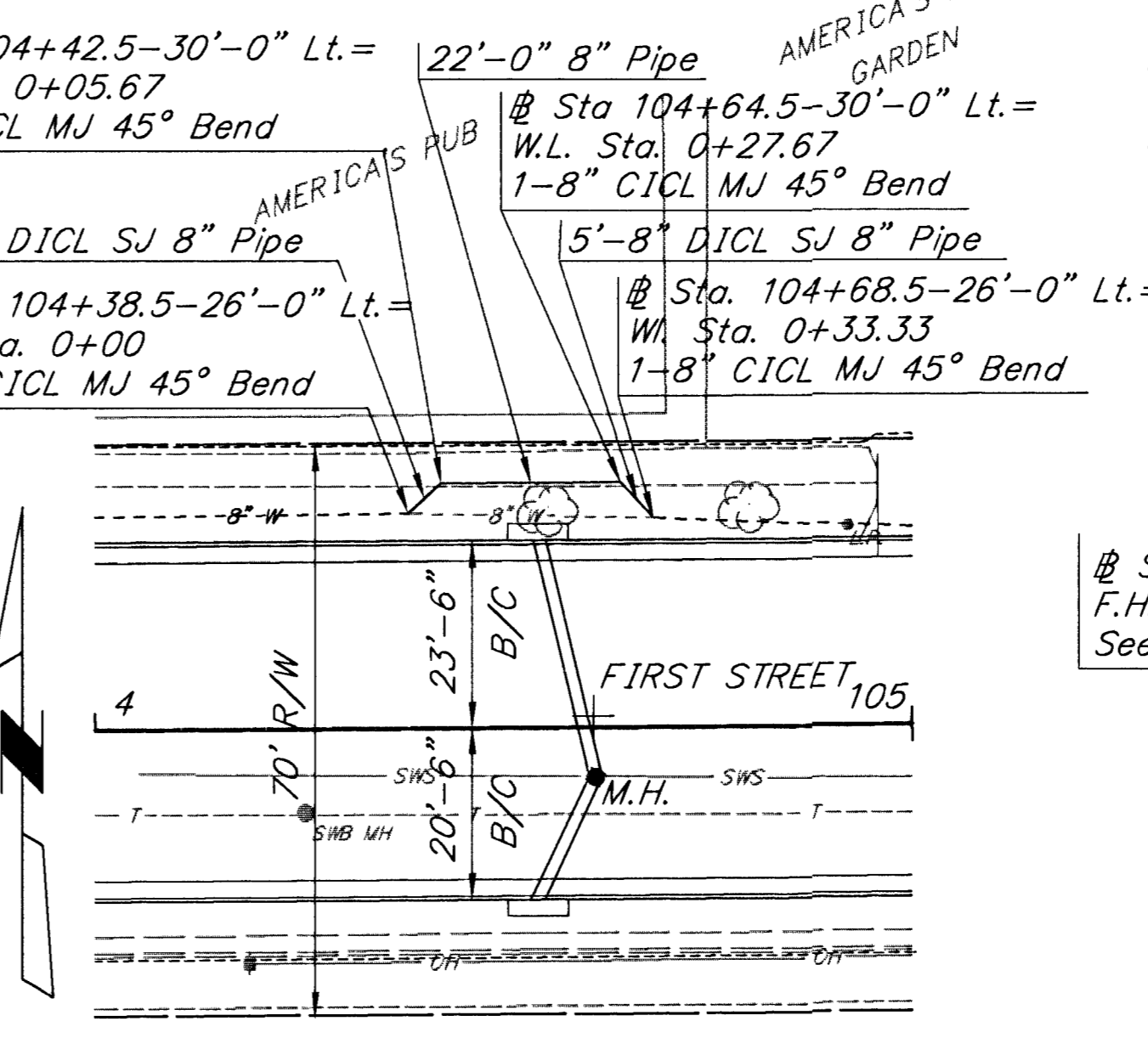
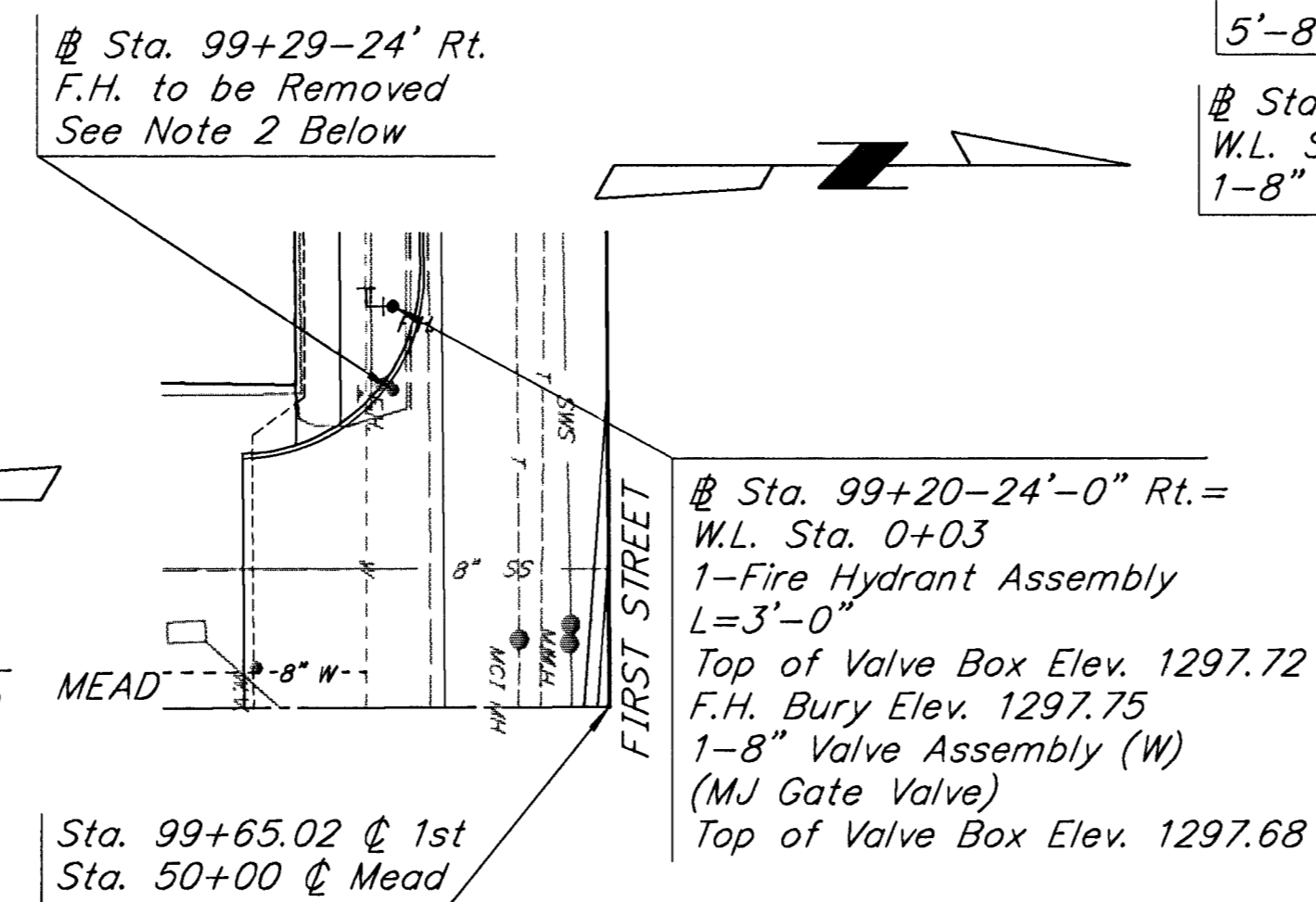
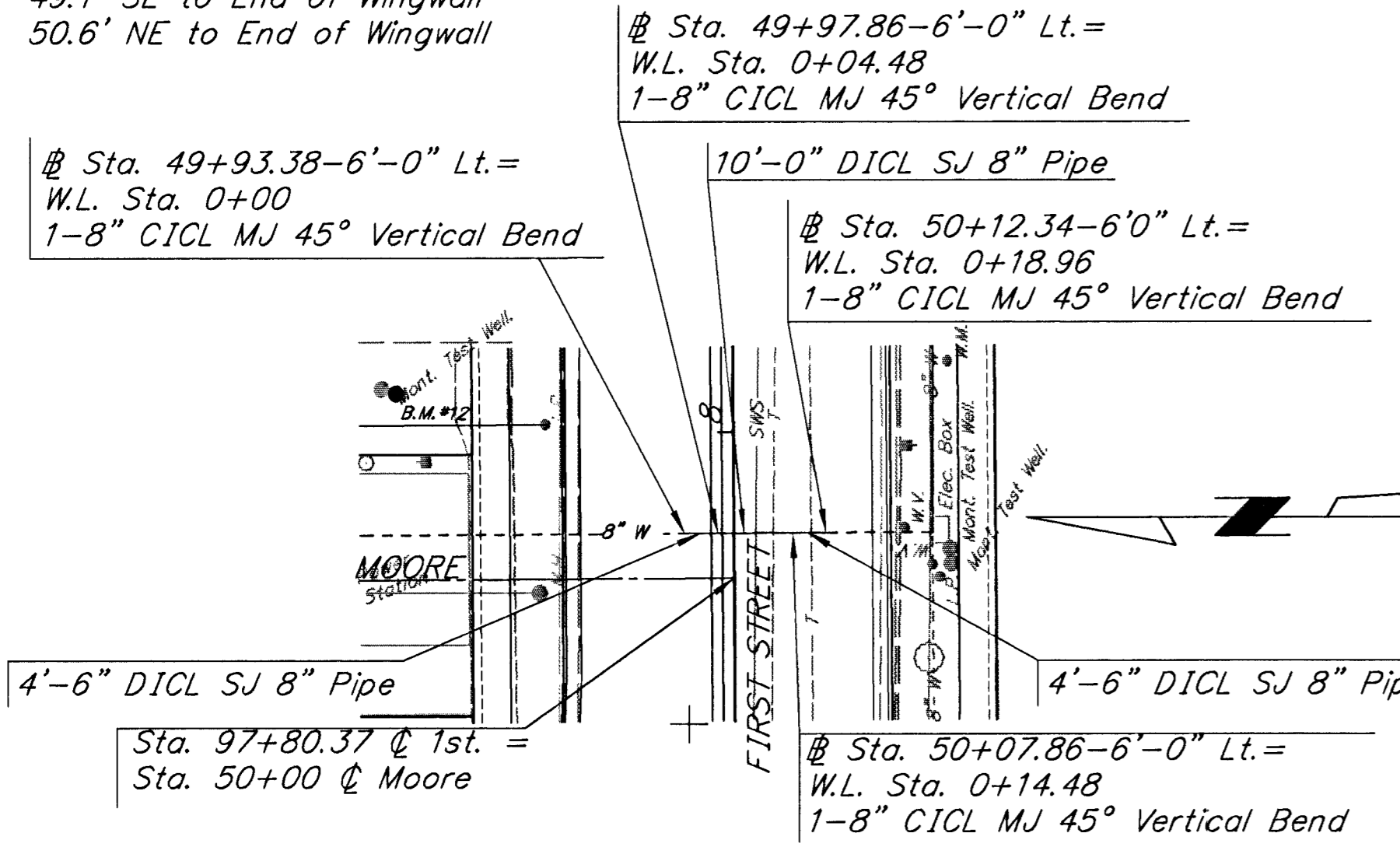


P.O.T. Sta. 95+00  
 1 1/2" PK Nail & Tin @ P.O.T.  
 37.3' NNW to 1/2" Rebar w/ Baughman Cap  
 49.1' SE to End of Wingwall  
 50.6' NE to End of Wingwall

P.O.T. Sta. 100+00  
 1/2" Iron Pipe in Thimble  
 43.6' NE to Chis. "□" on step  
 35.5' S to N.W. Cor. Dock, 151 N. Rock Is.  
 37.8' N to S.W. Cor. of Bldg., 800 1st St.

P.O.T. Sta. 106+60.95  
 1/2" Iron Pipe in Thimble  
 38.1' NW to Fire Hydrant  
 49.7' NE to Chis. "□" S.E. Cor. Signal Light Base  
 36.0' SW to PK Nail & Tin in Power Pole



NOTES: Line No. 1

1. At W.L. Sta. 0+00 and W.L. Sta. 0+22 the Contractor shall cut the existing 8" water line and install 8" CI CL MJ 45° Vertical Elbows. Contractor shall verify water line location and pipe diameter prior to ordering pipe. Cutting existing water line and removal of existing water line to facilitate water line construction shall be considered subsidiary to the project and not paid separately.  
 2. Upon completion of the new 8" water line the line shall be flushed west through the fire hydrant at Sta. 97+52.87-22'-6" Rt., tested and placed in service.

NOTES: Line No. 2

1. At Sta. 99+20-24' Rt. the Contractor shall excavate to verify water line location and pipe diameter prior to ordering material. Existing water line shall be cut and pipe removed to facilitate water valve and fire hydrant installation. Top of pipe elevation at the proposed fire hydrant location is approximately 1294.79.  
 2. After the new fire hydrant assembly at Sta. 99+20-24' Rt. has been placed in service, the Contractor shall remove existing fire hydrant assembly and plug hydrant valve (N).

NOTES: Line No. 3

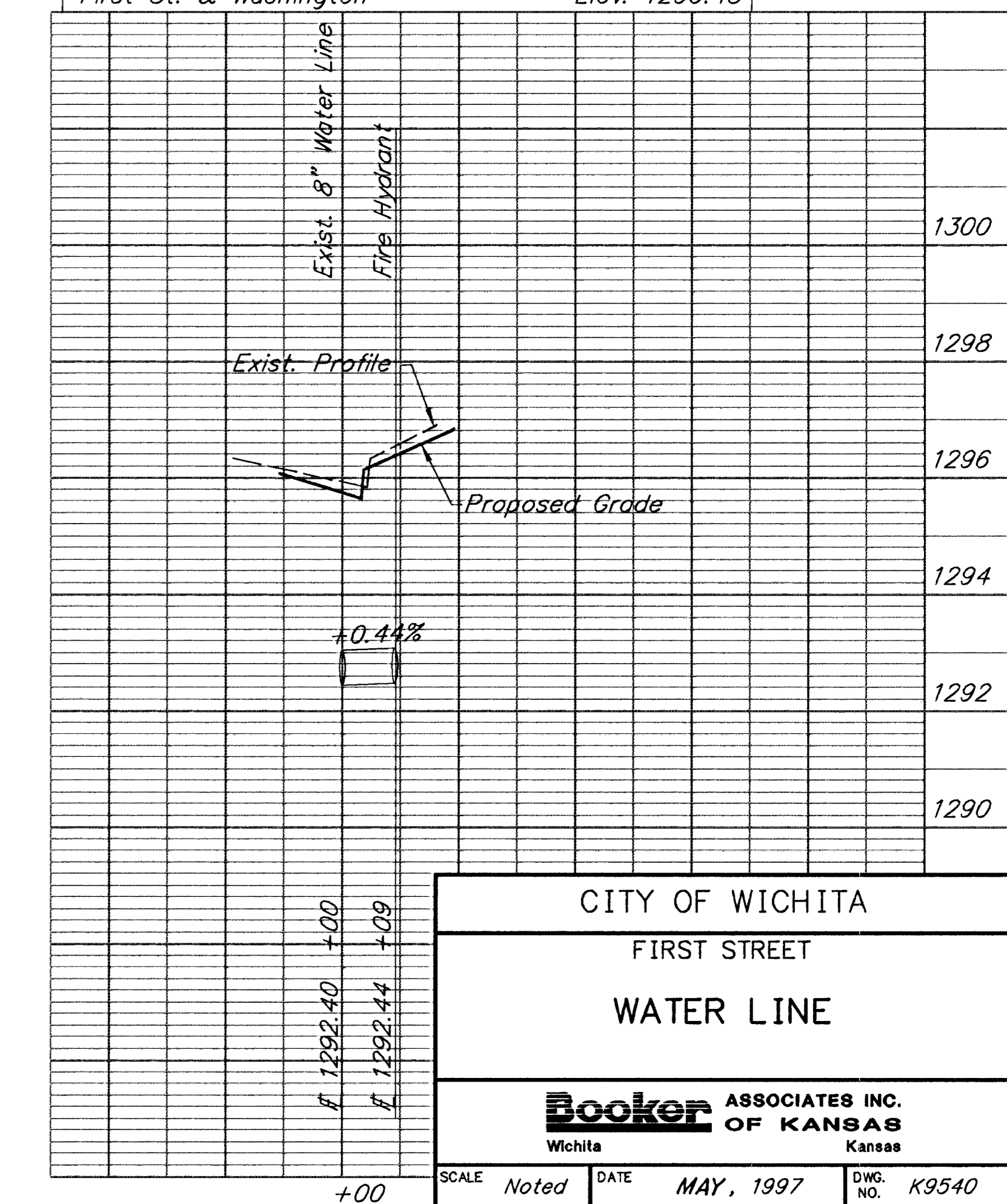
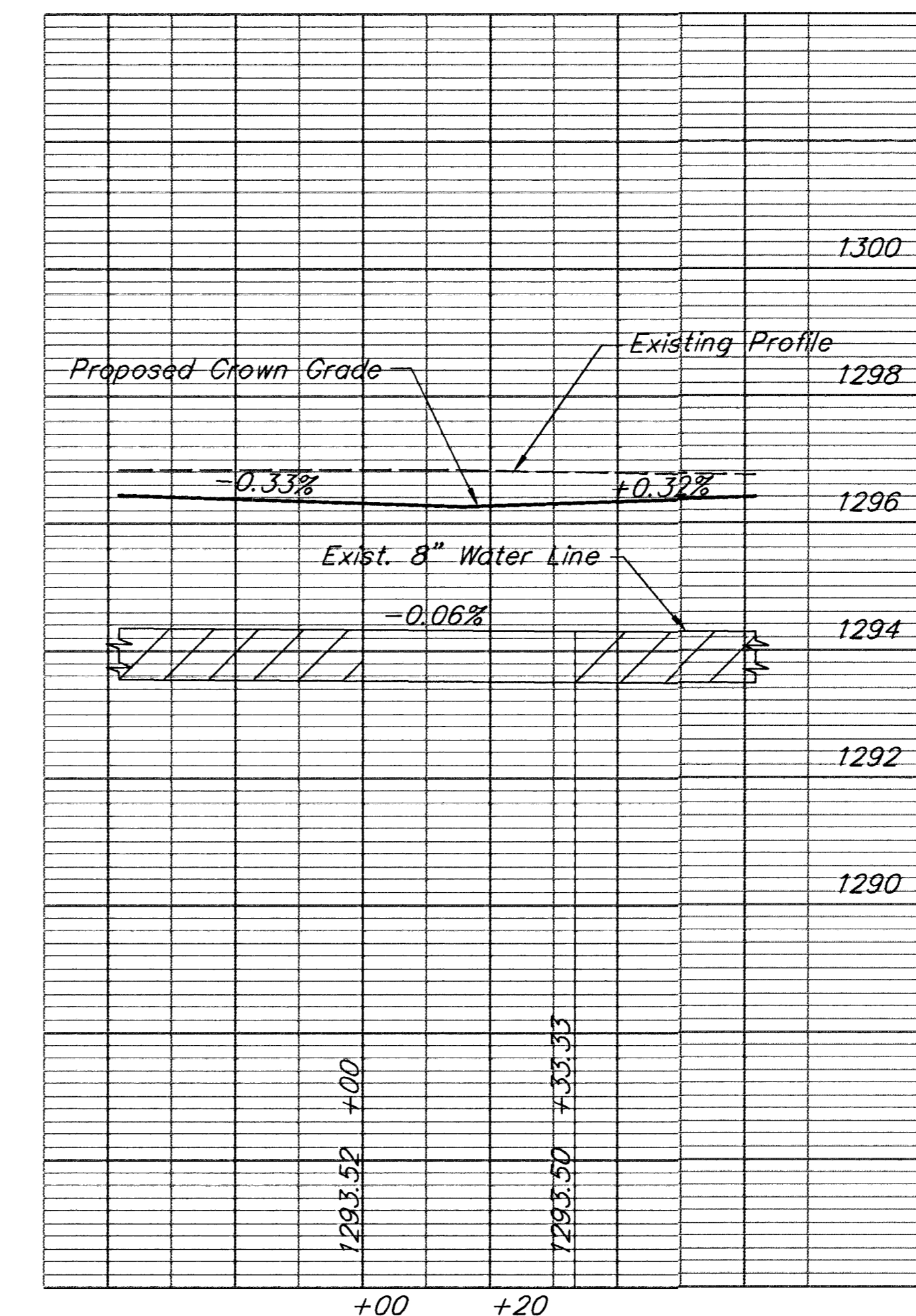
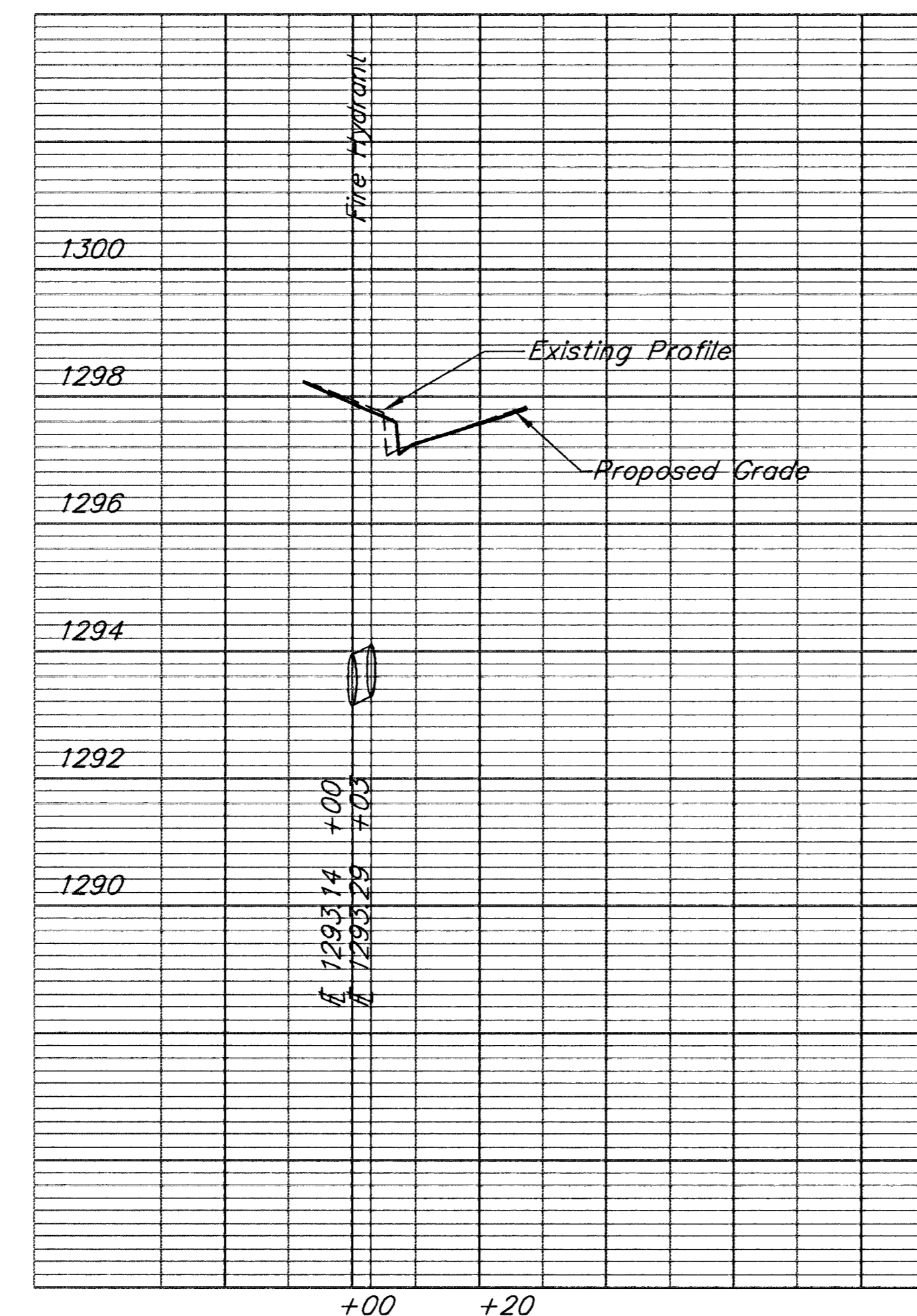
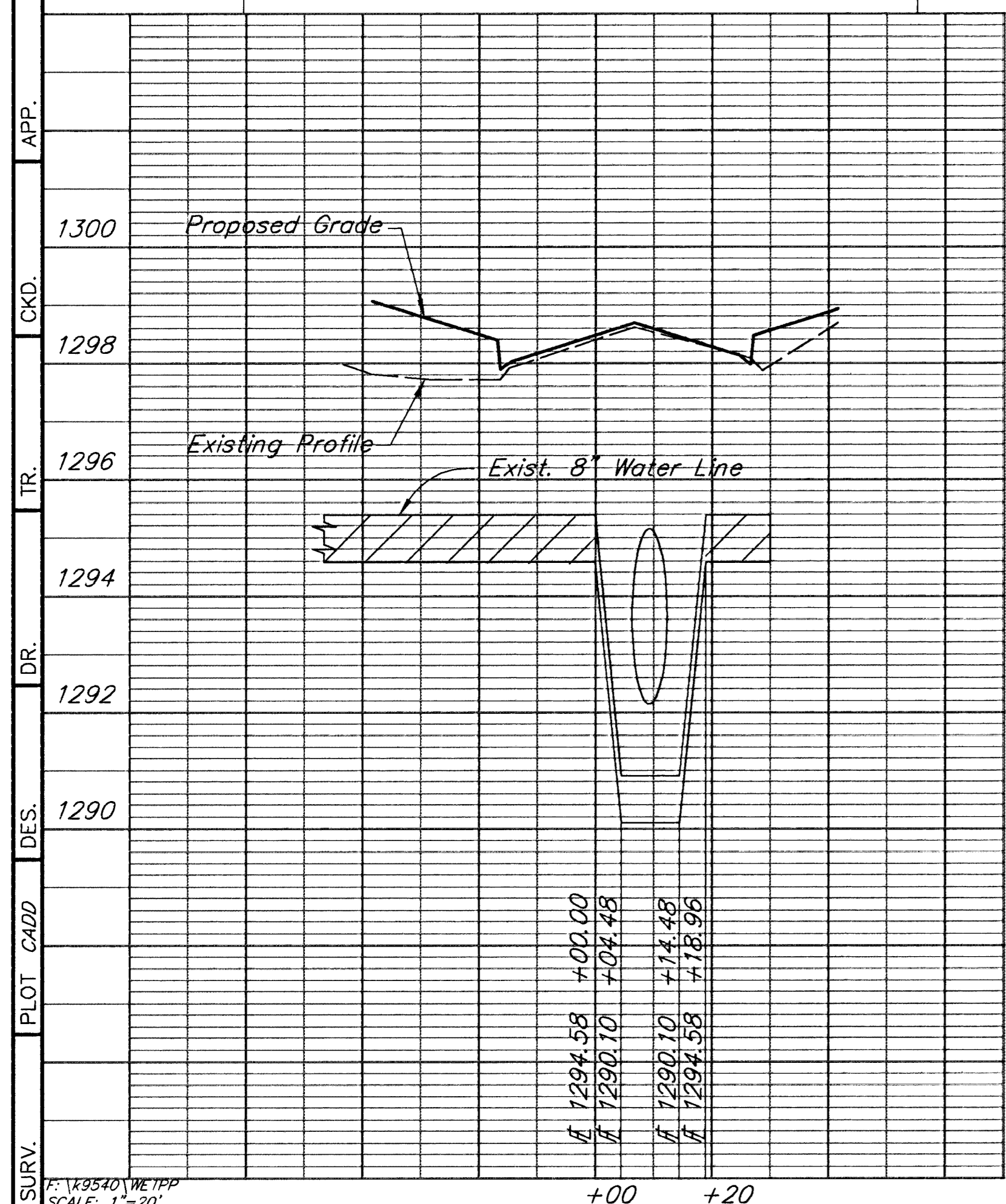
1. At W.L. Sta. 0+00 and W.L. Sta. 0+33.33 the Contractor shall cut the existing 8" water line and install 8" CI CL MJ 45° bends. Contractor shall verify water line location and pipe diameter prior to ordering pipe. Cutting existing water line and removal of existing water line to facilitate water line construction shall be considered subsidiary to the project and not paid separately.  
 2. Upon completion of the new 8" water line the line shall be flushed north through the fire hydrant at Sta. 106+27-28' Lt., tested and placed in service.

NOTES: Line No. 4

1. At Sta. 106+27-28' Lt., the Contractor shall excavate to verify water line location and pipe diameter prior to ordering material. Existing water line shall be cut and pipe removed to facilitate water valve and fire hydrant installation. Top of pipe elevation at the proposed fire hydrant location is approximately 1293.94.  
 2. After the new fire hydrant assembly at Sta. 106+27-28' Lt. has been placed in service, the Contractor shall remove existing fire hydrant assembly and plug hydrant valve (N).

B.M. #12 Chis. "□" on Top of M. Well  
 40' N. & 40' E. of First & Moore Elev. 1298.48

B.M. #15 Chis. "□" on Signal Light Base, N.E. Cor.  
 First St. & Washington Elev. 1296.43



CITY OF WICHITA  
 FIRST STREET  
 WATER LINE

Booker ASSOCIATES INC.  
 OF KANSAS  
 Wichita Kansas

SCALE Noted DATE MAY, 1997 DWG. NO. K9540

SURV. T. K9540, RE 1199 SCALE: 1"=20'  
 PLOT CADD  
 DES.  
 DR.  
 TR.  
 CKD.  
 APP.

Last Plot-Date: 11/07/96 Plot-Time: 9:13 A.M.