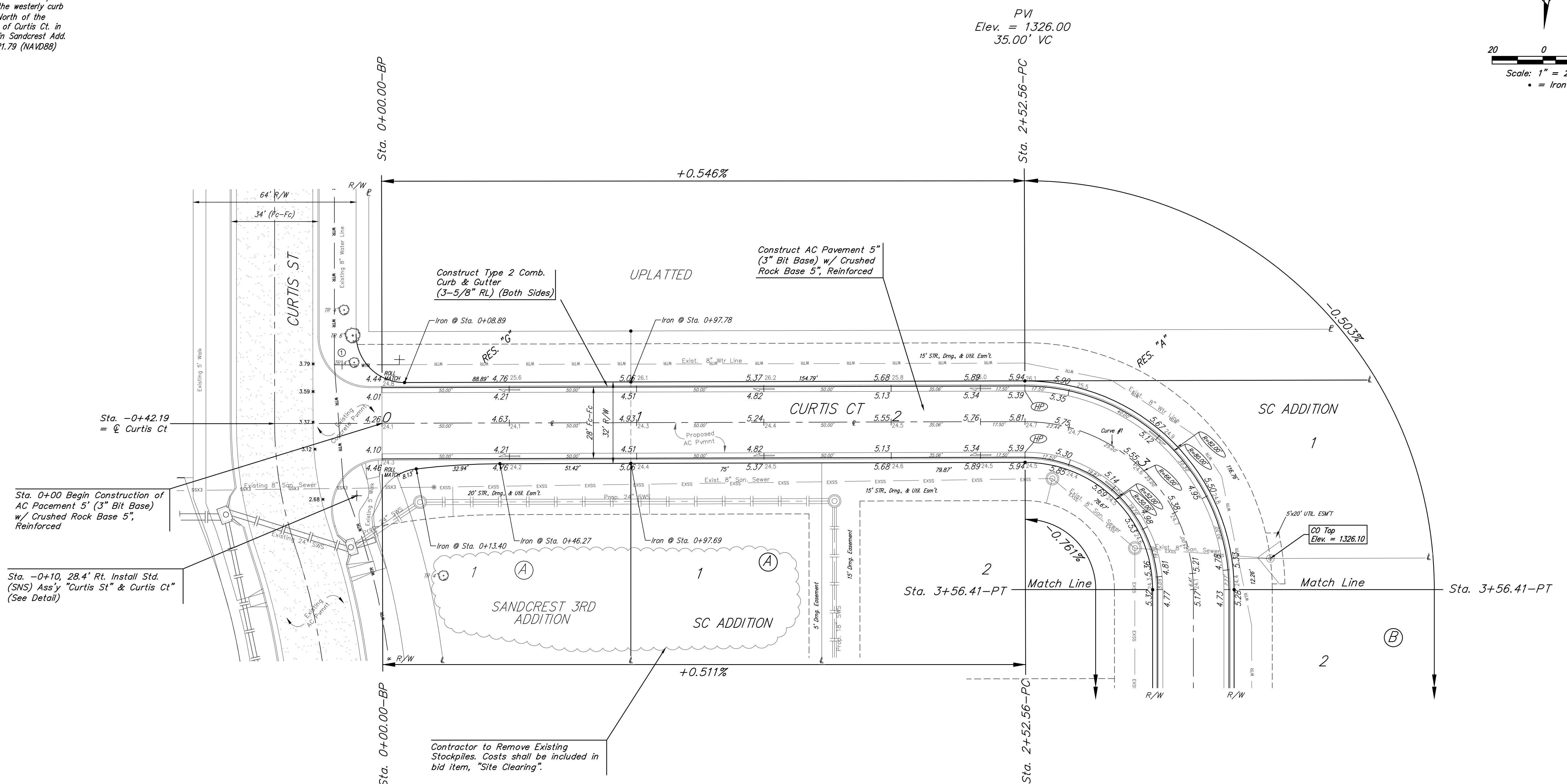
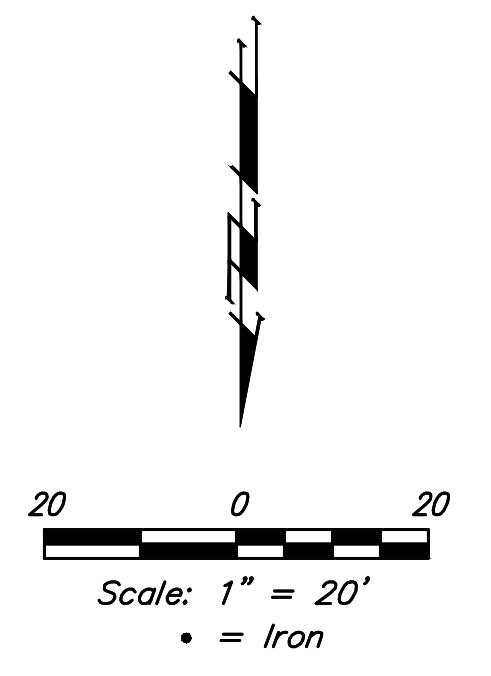


BENCHMARK:
 "+ cut in the top of curb adjacent to the common lot line of Lots 3-4, BLK D. Sandcrest 3rd Add. Elev = 1327.57 (NAVD88)

"+" cut in the front top center of the westerly curb inlet 131' North of the center line of Curtis Ct. in Curtis St. in Sandcrest Add. Elev = 1321.79 (NAVD88)



Curve #1
 Curve Data Based on Centerline
 Rad. = 66', Delta = 90°08'57" Tangent = 66.17'
 Arc = 103.84' L.C. = 93.46' Def./Ft. = 26.04464 Min.

Station	Arc	Face Chord Lengths		Defl.	Total Defl.
		8' Left	8' Right		
2+52.56	-	-	-	0°00'00"	0°00'00"
2+75.00	22.44'	29.78'	14.89'	9°44'26"	9°44'26"
3+00.00	25.00'	33.14'	16.57'	10°51'07"	20°35'33"
3+25.00	25.00'	33.14'	16.57'	10°51'07"	31°26'40"
3+50.00	25.00'	33.14'	16.57'	10°51'07"	42°17'47"
3+56.41	6.41'	8.54'	4.27'	2°46'57"	45°04'44"

Roll type curb & gutter to be constructed on the pavement on this sheet.
 Top of curb elevation are given for full height curb.

Baughman SC Addition
CURTIS CT
 Sta. 0+00.0 to Sta. 3+56.41

Baughman Company, P.A. 315 Ellis St. Wichita, KS 67211 P 316-262-7271 F 316-262-0149
 ENGINEERING | SURVEYING | PLANNING | LANDSCAPE ARCHITECTURE

PROJECT NUMBER 472-2020-085594	DESIGN AEG	DRAWN CDW
REVISIONS:	APPROVED	DATE 04/14/21
		SCALE Noted
		SHEET 2 OF 24

E:\Projects\SC Addition_19111499\Engineering\Phase 1\SC Plans\STR\STR_1911E430.dwg