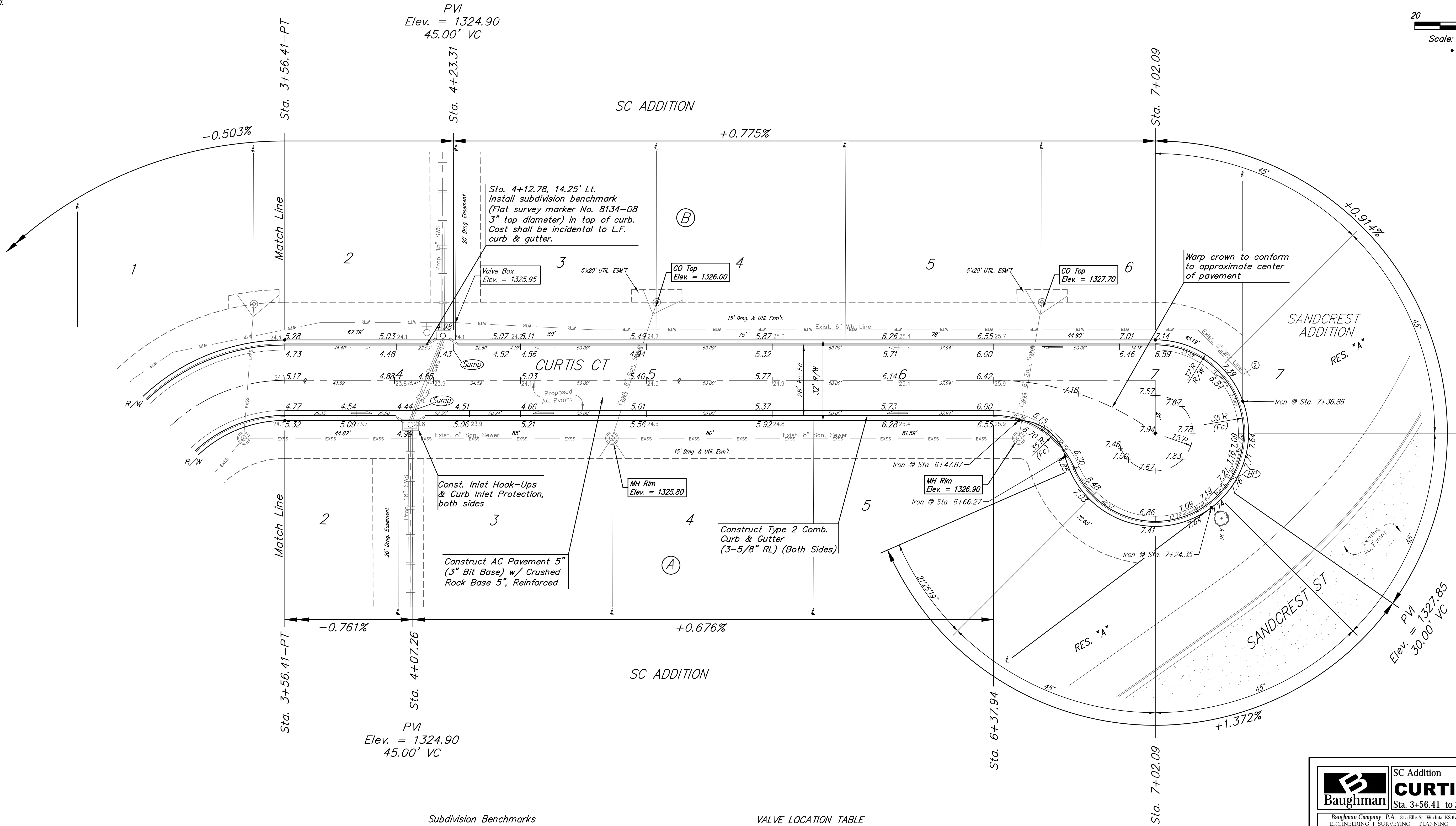
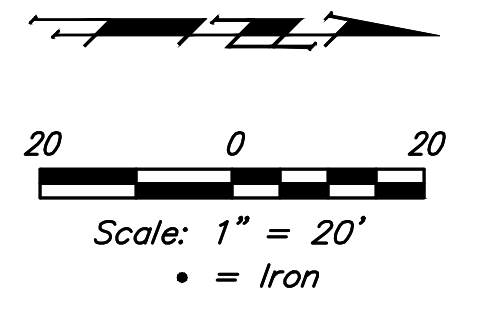


BENCHMARK:
 "+ cut in the top of curb adjacent to the common lot line of Lots 3-4, BLK D, Sandcrest 3rd Add. Elev = 1327.57 (NAVD88)

"+" cut in the front top center of the westerly curb inlet 131' North of the center line of Curtis Ct. in Curtis St. in Sandcrest Add. Elev = 1321.79 (NAVD88)



Subdivision Benchmarks

Street & Station	Location Description	Elevation
Curtis Ct 4+12.78, 14.25' Lt.	Adjacent to Fire Hydrant at NE Corner of Lot 2 Block B	

VALVE LOCATION TABLE

VALVE NUMBER	STREET	BASELINE STATION	OFFSET DISTANCE	OFFSET DIRECTION
1	Curtis Ct	-0+15.64	23'	Lt.
2	Curtis Ct	7+36.86	2.2'	Lt.

Roll type curb & gutter to be constructed on the pavement on this sheet.
 Top of curb elevation are given for full height curb.

	SC Addition CURTIS CT	
	Sta. 3+56.41 to Sta. 7+02.09	
Baughman Company, P.A. 315 Ellis St. Wichita, KS 67211 P 316.262.7271 F 316.262.0149 ENGINEERING SURVEYING PLANNING LANDSCAPE ARCHITECTURE		
PROJECT NUMBER 472.2020.085594	DESIGN AEG	DRAWN CDW
REVISIONS:	APPROVED	DATE 04/14/21
	SCALE Noted	SHEET
		3 OF 24