

BENCHMARK:

"+" cut in the top of curb adjacent to the common lot line of Lots 3-4, BLK D, Sandcrest 3rd Add. Elev = 1327.57 (NAVD88)

"+" cut in the front top center of the westerly curb inlet 131' North of the center line of Curtis Ct. in Curtis St. in Sandcrest Add. Elev = 1321.79 (NAVD88)

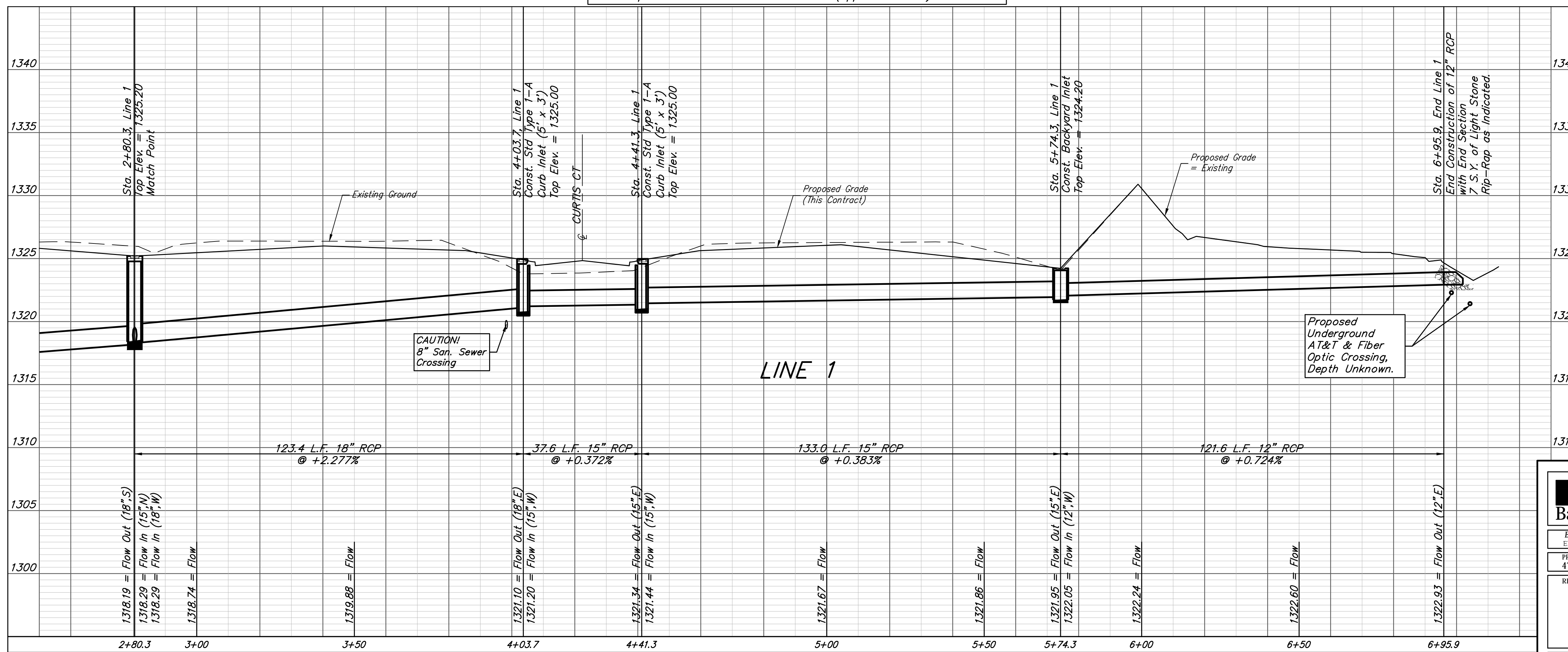
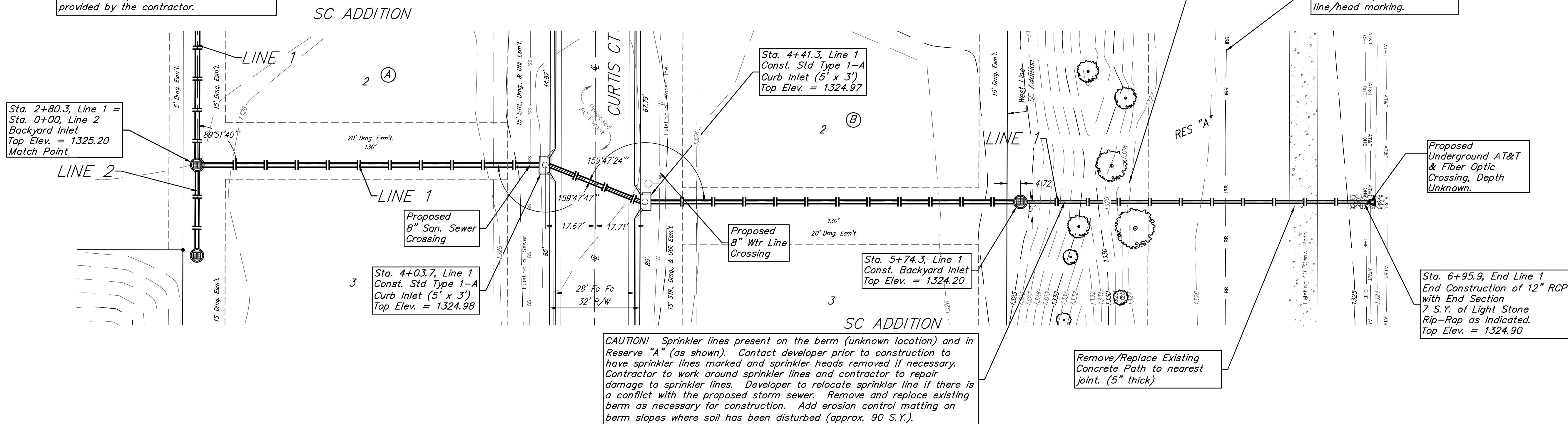
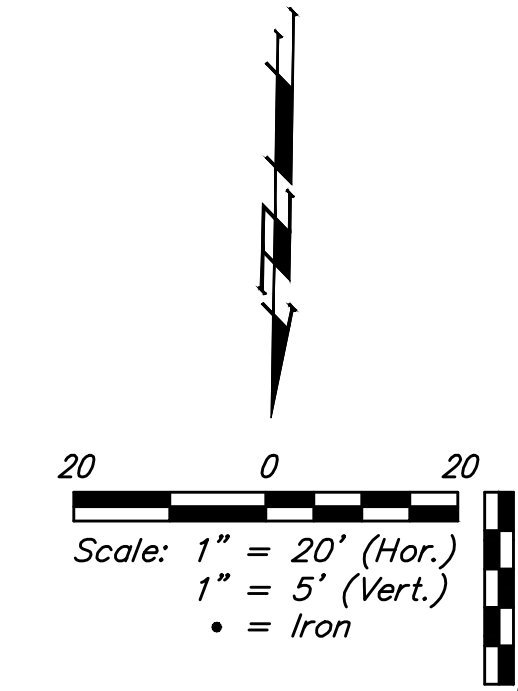
Native Backfill in lieu of Sand Fill

The Contractor is to sand fill, flush, and vibrate. If suitable sand material is found on site for backfill, contractor may be allowed to use on-site material at the discretion of the Project Engineer. If the Project Engineer determines on-site material is not suitable, then contractor must haul in fill sand. In the event not enough suitable material for backfill is found on-site, the balance shall be provided by the contractor.

All trench and inlet excavation areas from Sta. 4+03.7 to Sta. 4+41.3, Line 1 shall be backfilled with sand. The sand backfill shall be within two feet of existing grade and shall be water-jetted and vibrated during backfilling. All costs shall be paid for as L.F. "Fill, Sand (Flushed & Vibrated)".

Protect existing trees near construction from damage.

NOTE: Contact Developer prior to construction to coordinate sprinkler line/head marking.



	SC Addition
	LINE 1
Storm Water Sewer Improvements	
<small>Baughman Company, P.A. 315 Ellis St. Wichita, KS 67211 P 316-262-7271 F 316-262-0149 ENGINEERING SURVEYING PLANNING LANDSCAPE ARCHITECTURE</small>	
<small>PROJECT NUMBER 472-2020-085394</small>	<small>DESIGN AEG</small>
<small>REVISIONS:</small>	<small>DRAWN CDW</small>
	<small>DATE 04/14/21</small>
	<small>SCALE Noted</small>
	<small>SHEET</small>
5 OF 24	