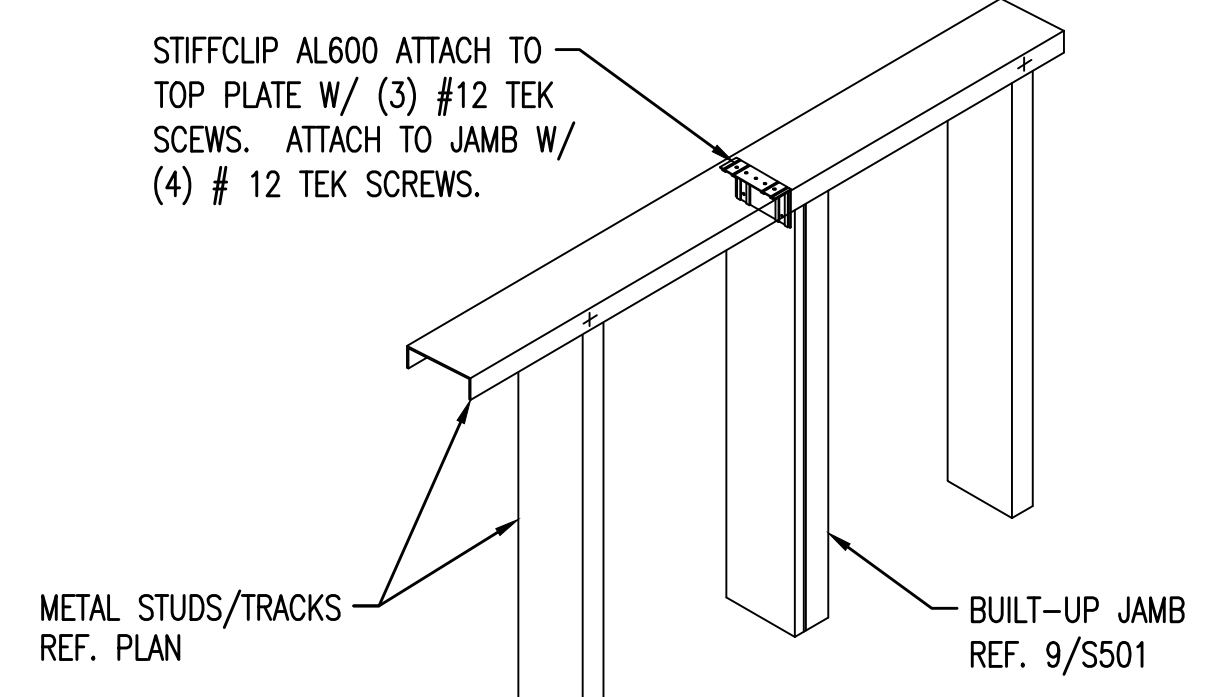
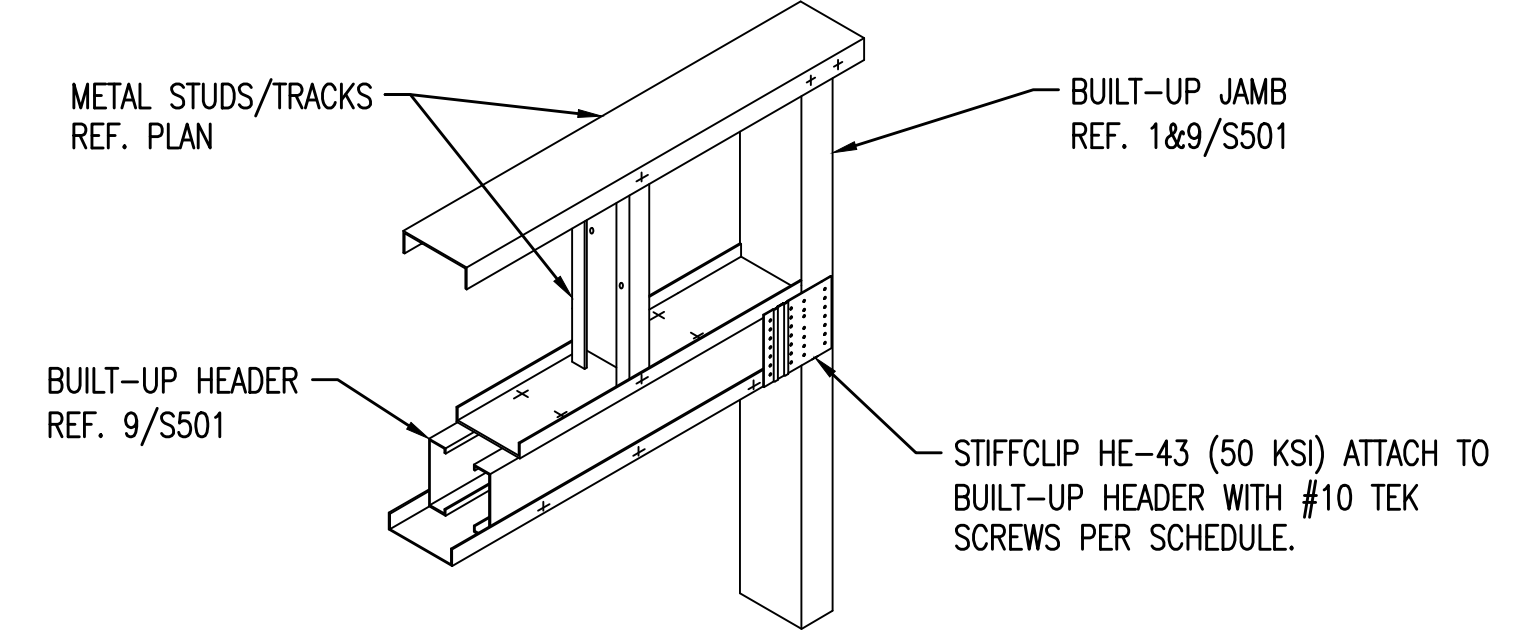


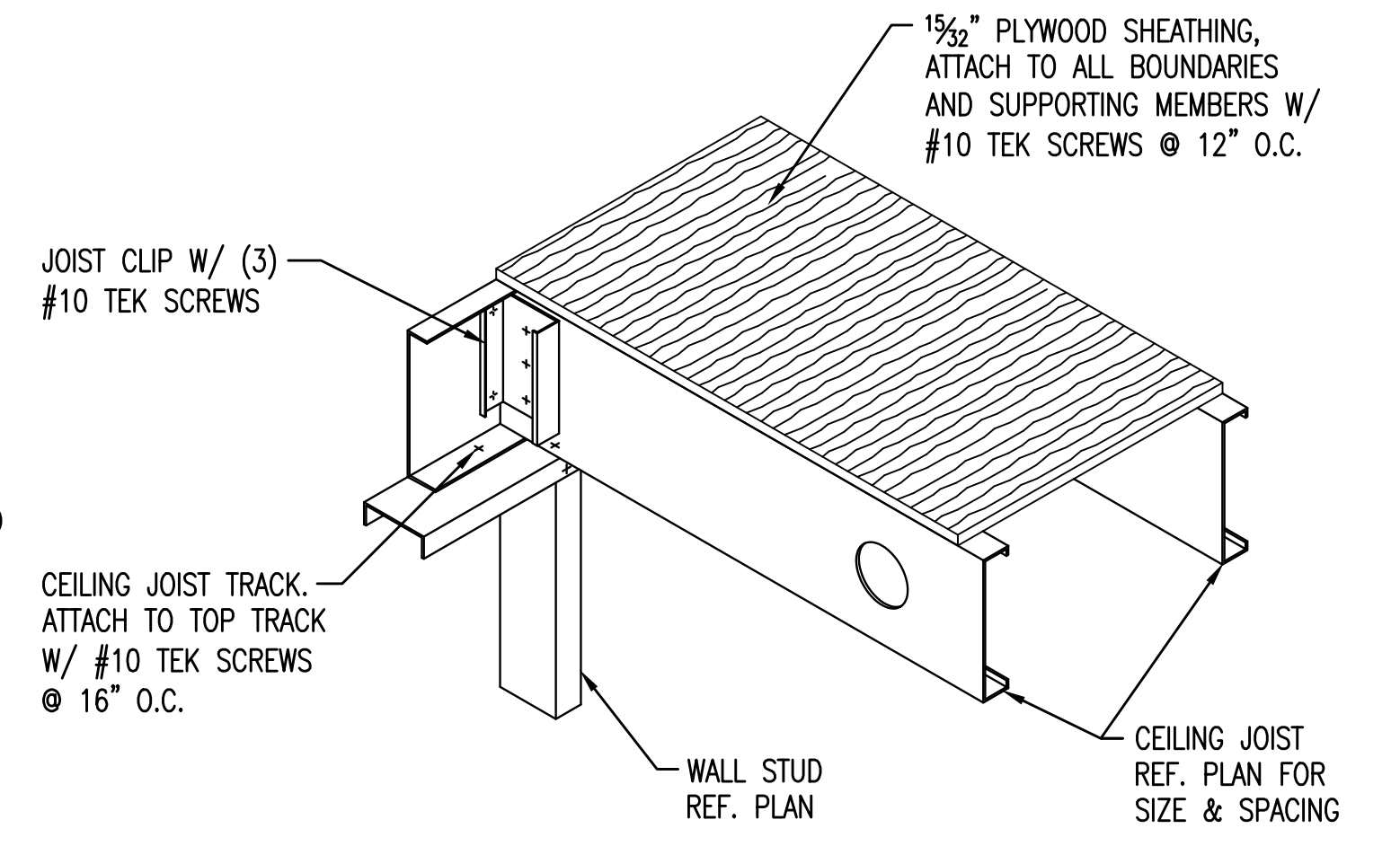
1 TYP. JAMB TO CONC. CONN.
SCALE: NOT TO SCALE



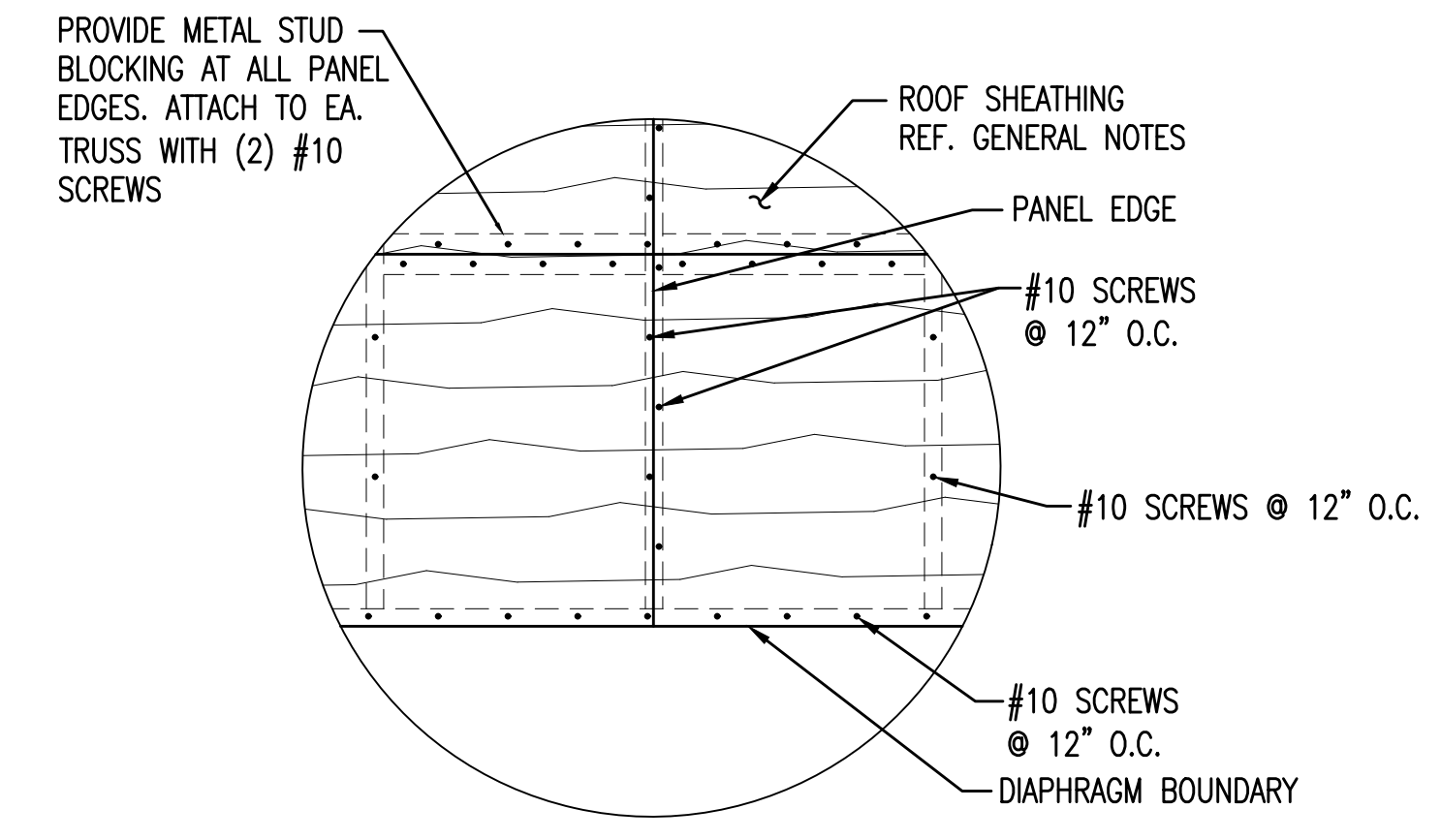
2 TYP. JAMB AT TOP CONN.
SCALE: NOT TO SCALE



3 TYP. HEADER CONN. TO JAMB
SCALE: NOT TO SCALE



4 TYP. JOIST BEARING
SCALE: NOT TO SCALE



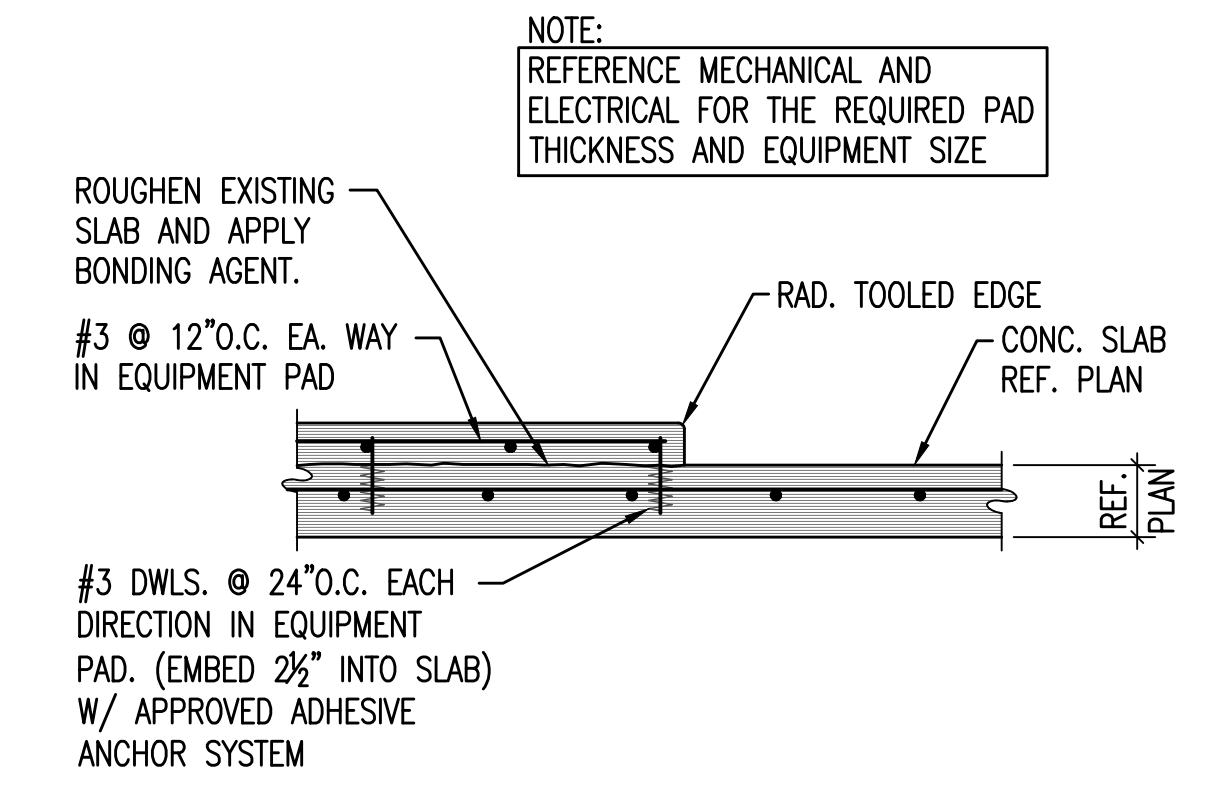
5 TYP. SHEATHING FASTENING
SCALE: NOT TO SCALE

TABLE A - REINFORCEMENT LAPS, EMBEDMENTS, AND HOOK LENGTHS.
fy = 60000 PSI f'c = 4000 PSI

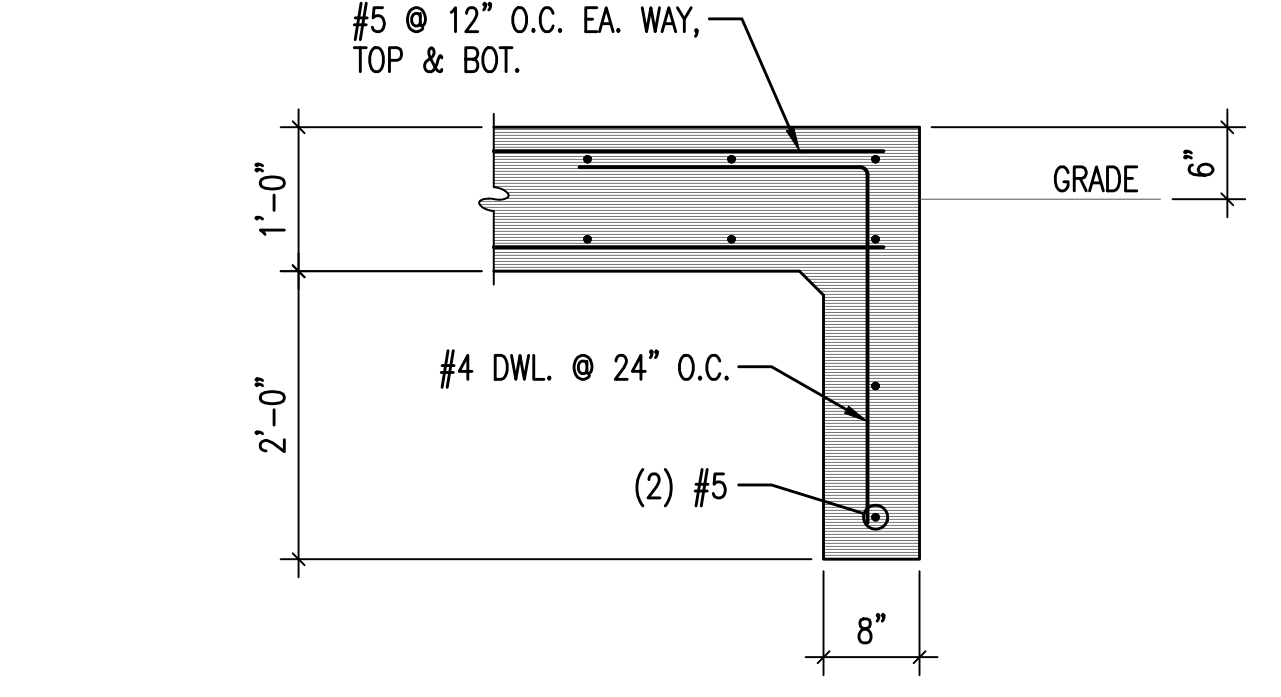
BAR SIZE (d)	CLEAR SPACING (s) (in)			EMBEDMENT & CLASS A LAP (in)				CLASS B LAP (in)				HOOK (in)				
				TOP BAR		OTHER BARS		TOP BAR		OTHER BARS						
	2d	3d	5d	2d < S < 3d	S > 3d	2d < S < 3d	S > 3d	2d < S < 3d	S > 3d	2d < S < 3d	S > 3d					
3	3/4	1 1/8	1 7/8	28	18	12	21	14	12	36	24	14	28	18	12	8
4	1	1 1/2	2 1/2	37	25	15	28	19	12	48	32	19	37	25	15	10
5	1 1/4	1 7/8	3 1/8	46	31	18	36	24	14	60	40	24	46	31	18	12
6	1 1/2	2 1/4	3 3/4	55	37	22	43	28	17	72	48	29	55	37	22	15
7	1 3/4	2 5/8	4 1/8	81	54	32	62	42	25	105	70	42	81	54	32	18
8	2	3	5	92	62	37	71	47	28	120	80	48	92	62	37	20
9	2 1/4	3 3/8	5 5/8	104	70	42	80	54	32	136	90	54	104	70	42	22
10	2.54	3.81	6.35	117	78	47	90	60	36	153	102	61	117	78	47	25
11	2.82	4.23	7.05	130	87	52	100	67	40	170	113	68	130	87	52	27

NOTES:
1. LENGTHS SHOWN CONFORM WITH NON-SEISMIC PROVISIONS OF ACI 318 FOR UNCOATED BARS.
2. BAR CLEAR SPACING IS THE CENTER TO CENTER BAR SPACING MINUS ONE BAR DIAMETER.
3. CLASS A LAP LENGTHS APPLY WHEN BAR LAPS ARE STAGGERED TO LAP HALF THE BARS AT THE SAME LOCATION. USE CLASS B LAP FOR ALL OTHER CASES.
4. TOP BARS ARE HORIZONTAL REINFORCEMENT PLACED SO THAT MORE THAN 12 INCHES OF CONCRETE IS CAST BELOW THE REINFORCEMENT.
5. MULTIPLY LAP AND EMBEDMENT LENGTHS GIVEN BY 2.0 FOR BARS WITH CLEAR SPACING OF TWO BAR DIAMETERS OR LESS, OR CONCRETE COVER OF ONE BAR DIAMETER OR LESS.
6. TABLE FOR NORMAL WEIGHT CONCRETE AND UNCOATED REINFORCING BARS ONLY.

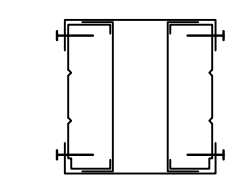
6 TABLE A
SCALE: NOT TO SCALE



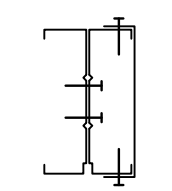
7 EQUIPMENT PAD DETAIL
SCALE: 3/4" = 1'-0"



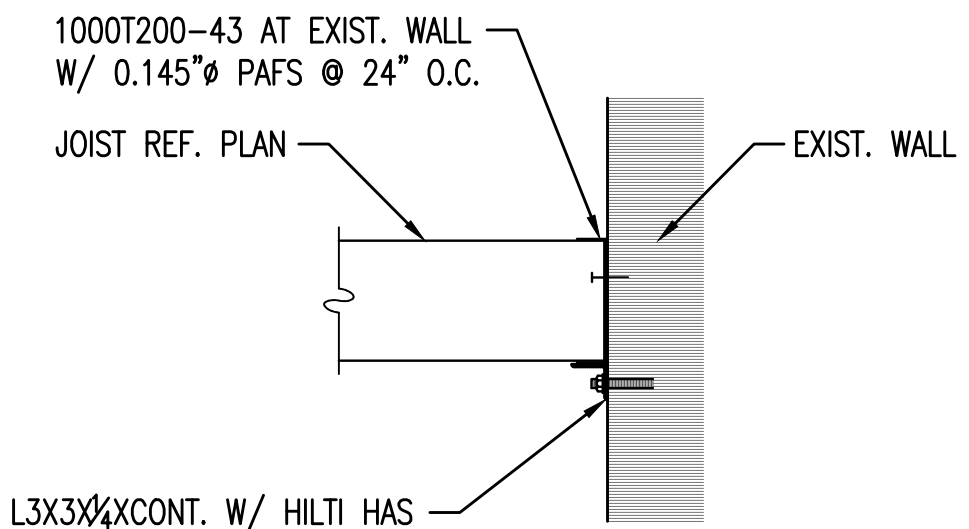
8 GENERATOR PAD DETAIL
SCALE: 3/4" = 1'-0"



HEADER DETAIL
(2) VERT. 400S162-43 W/
(2) VERT. 400T125-43
CAPPED T.&B. W/ 400T125-43



JAMB DETAIL
(2) 400S162-43 W/
(2) #12 TEK SCREWS
@ 24" O.C. VERT., CAPPED
W/ 400T125-43

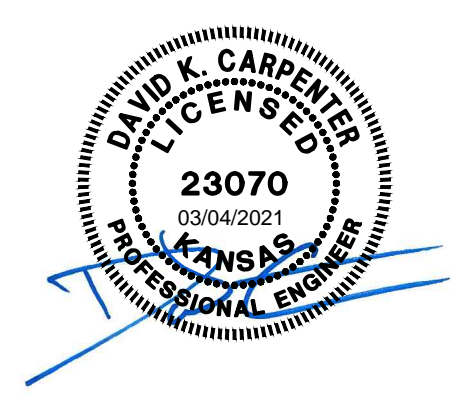
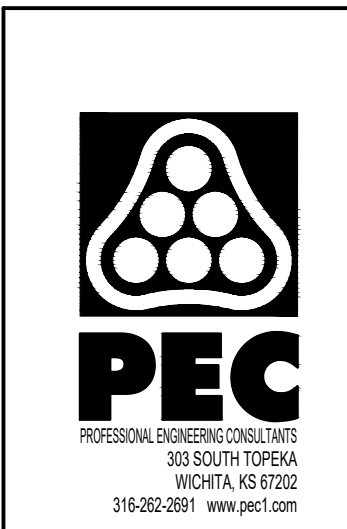


L3X3X4XCONT. W/ HILTI HAS
RODS & HILTI HIT HY-270 @
24" O.C. DRILL & ADHERE INTO
EXIST. WALL (EMBED 4" MIN.)

10 FRAMING AT EXIST. WALL
SCALE: 3/4" = 1'-0"

9 BUILT-UP SECTION DETAILS
SCALE: NOT TO SCALE

Saved 03-04-2021 3:23:56 PM by DAVID CARPENTER
 Plot Scale 1:1 03-04-2021 3:36:07 PM by TYLER JACOBS
 U:\wchita-facil\2018\180537\000\Struct\Drawings\CD's\180537 - S501



4			
3			
2			
1	CONSTRUCTION DOCUMENTS		03-04-21
No.	Revision	By	Date
CITY OF WICHITA, KANSAS			
STRUCTURAL DETAILS			
STANDBY POWER GENERATION - SOUTHEAST PUMP STATION			
Professional Engineering Consultants, P.A. 303 S. TOPEKA • WICHITA, KANSAS 67202 316-262-2691 • FAX 316-262-3003			
Designed by DKC	Job No. 180537-000	Dwg No. S501	
Drawn by TAJ	Checked by	Date MARCH 2021	