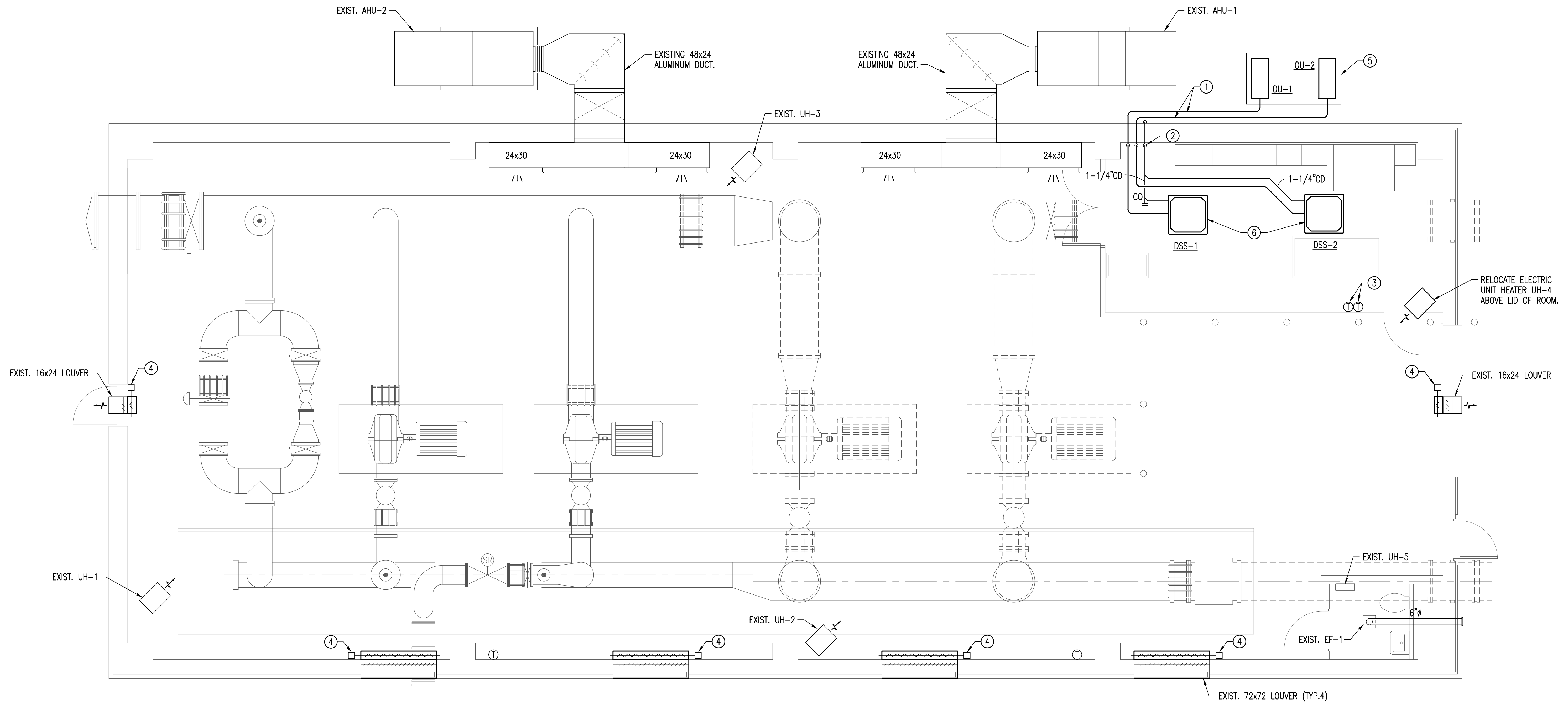
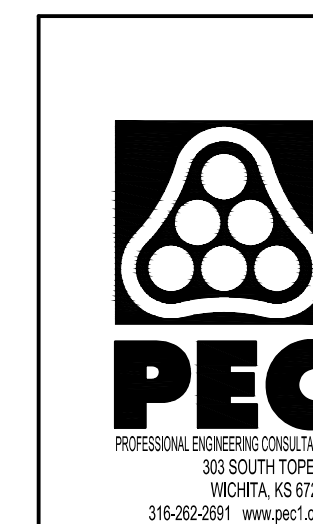
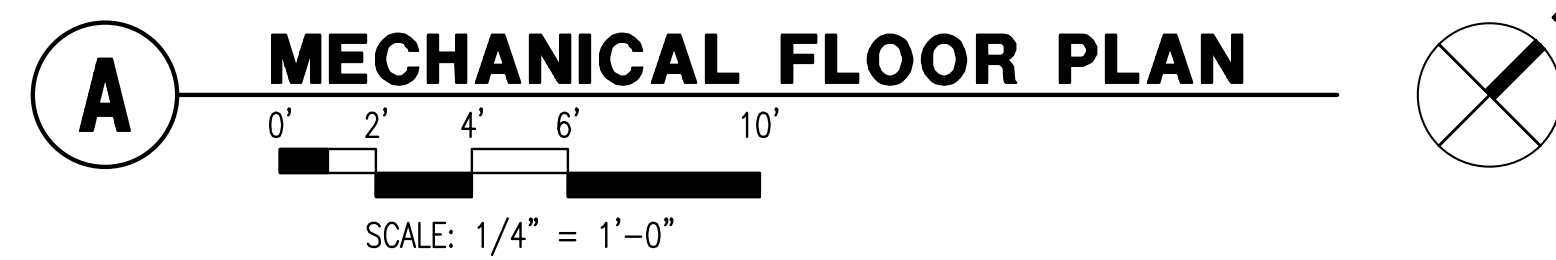


Saved: 02-05-2021 2:41:38 PM by MATT.NEWMAN  
 Plot Scale: 1:1 03-04-2021 4:50:20 PM by MATT.NEWMAN  
 U:\Wichita-Facility\180537\000\Mech Drawings\WHT01 MECHANICAL FLOOR PLAN



**PLAN NOTES:**

- ① ROUTE REFRIGERANT LIQUID AND SUCTION PIPING FROM OUTDOOR UNITS TO INDOOR UNITS. SIZE PER MANUFACTURER'S RECOMMENDATIONS. INSULATE WITH 1/2" ELASTOMERIC INSULATION AND COVER EXTERIOR PIPING WITH PROTECTIVE ALUMINUM JACKET. SUPPORT PIPING ALONG WALL.
- ② ROUTE 1-1/4" CONDENSATE DRAIN LINE DOWN ALONG WALL. PENETRATE EXTERIOR WALL, AND ANGLE PIPING DOWN AT 45 DEG ANGLE TO SPILL ONTO SPLASH BLOCK. CONDENSATE PIPING SHALL BE SCH 40 PVC INSULATED WITH 1/2" ELASTOMERIC INSULATION.
- ③ THERMOSTAT FOR DSS-1 AND DSS-2 PROVIDED BY DUCTLESS SYSTEM MANUFACTURER. SET UP PER SEQUENCE ON FOLLOWING SHEET.
- ④ REMOVE EXISTING BACKDRAFT DAMPERS. INSTALL NEW INSULATED, LOW-LEAK MOTORIZED DAMPERS EQUAL TO GREENHECK SERIES VCD. INTERLOCK TO OPEN WITH UPON EXISTING MAKEUP AIR UNIT OPERATION.
- ⑤ 8" THICK CONCRETE EQUIPMENT PAD. SUPPORT CONDENSING UNITS OFF OF PAD WITH STAND. REFER TO DETAIL ON FOLLOWING SHEET.
- ⑥ SUPPORT UNIT FROM JOIST WITH ALL THREAD ROD.



4			
3			
2			
1	CONSTRUCTION DOCUMENTS		03-04-21
No.	Revision	By	Date
CITY OF WICHITA, KANSAS			
MECHANICAL FLOOR PLAN			
STANDBY POWER GENERATION - SOUTHEAST PUMP STATION			
<b>Professional Engineering Consultants, P.A.</b> 303 S. TOPEKA • WICHITA, KANSAS 67202 316-262-2691 • FAX 316-262-3003			
Designed by	CWW	Job No.	180537-000
Drawn by	MHN	Checked by	JBC
Date	MARCH 2021	Dwg No.	MH101