

FEEDER SCHEDULE

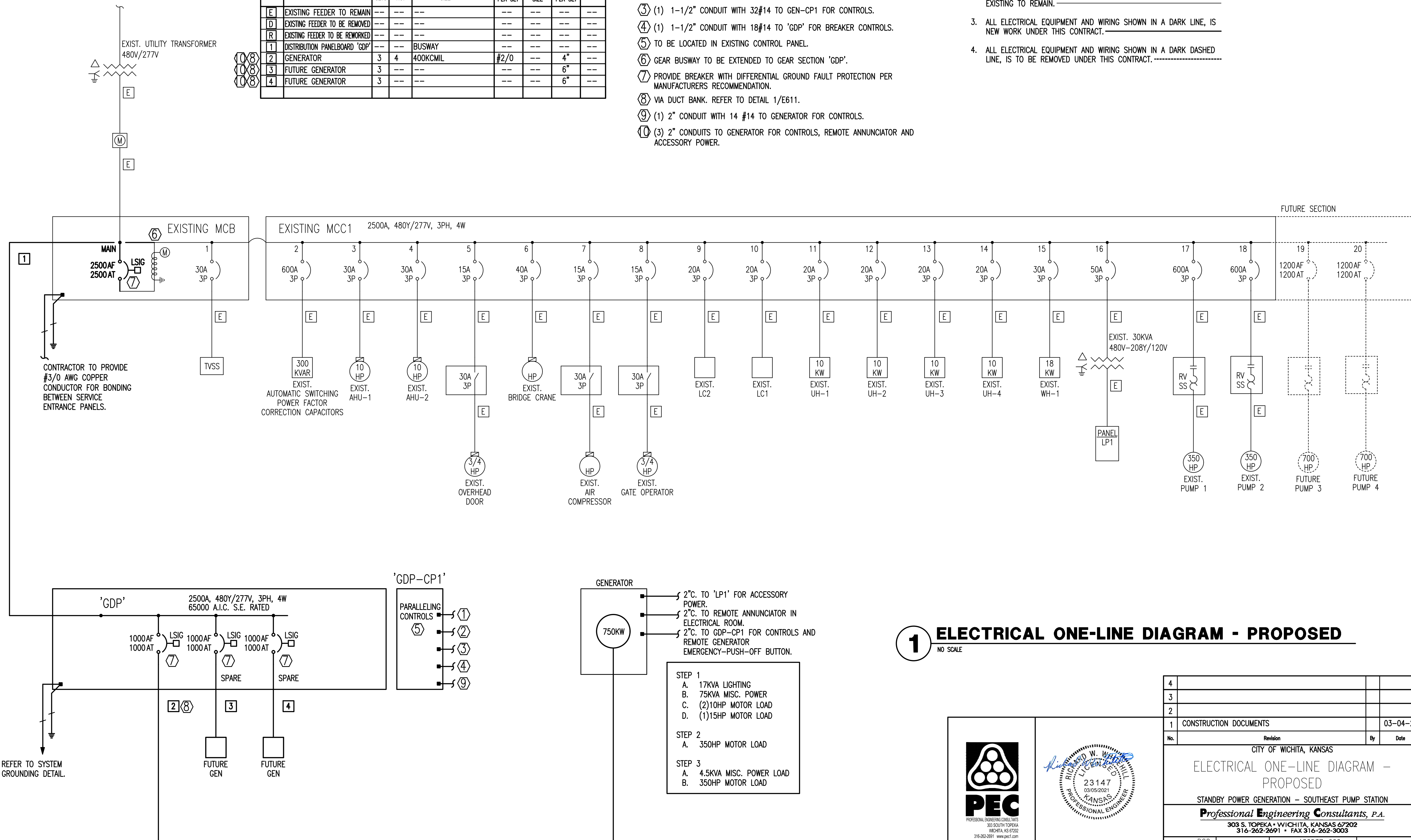
DESIG.	EQUIPMENT SERVED	CONDUCTORS			GROUND SIZE PER SET	ISOLATED GROUND SIZE	CONDUIT SIZE PER SET	SPARE CONDUIT
		SETS	NO.	SIZE				
E	EXISTING FEEDER TO REMAIN	--	--	--	--	--	--	
D	EXISTING FEEDER TO BE REMOVED	--	--	--	--	--	--	
R	EXISTING FEEDER TO BE REMOVED	--	--	--	--	--	--	
1	DISTRIBUTION PANELBOARD 'GDP'	--	--	BUSWAY	--	--	--	
2	GENERATOR	3	4	400KCMIL	#2/0	4"	--	
3	FUTURE GENERATOR	3	--	--	--	6"	--	
4	FUTURE GENERATOR	3	--	--	--	6"	--	

KEYED NOTES:

- ① (1) 1" CONDUIT WITH 2 #14 AWG TO GENERATOR EMERGENCY-PUSH-OFF BUTTON.
- ② (2) 2" CONDUIT WITH PULL ROPE FOR CONTROLS CABLING TO EACH HANDHOLE FOR FUTURE GENERATORS.
- ③ (1) 1-1/2" CONDUIT WITH 32#14 TO GEN-CP1 FOR CONTROLS.
- ④ (1) 1-1/2" CONDUIT WITH 18#14 TO 'GDP' FOR BREAKER CONTROLS.
- ⑤ TO BE LOCATED IN EXISTING CONTROL PANEL.
- ⑥ GEAR BUSWAY TO BE EXTENDED TO GEAR SECTION 'GDP'.
- ⑦ PROVIDE BREAKER WITH DIFFERENTIAL GROUND FAULT PROTECTION PER MANUFACTURERS RECOMMENDATION.
- ⑧ VIA DUCT BANK. REFER TO DETAIL 1/E611.
- ⑨ (1) 2" CONDUIT WITH 14 #14 TO GENERATOR FOR CONTROLS.
- ⑩ (3) 2" CONDUITS TO GENERATOR FOR CONTROLS, REMOTE ANNUNCIATOR AND ACCESSORY POWER.

GENERAL ONE-LINE DIAGRAM NOTES:

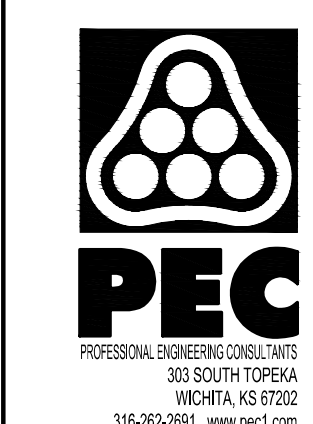
1. UNLESS OTHERWISE NOTED, ALL CIRCUIT BREAKERS AND/OR SWITCHES ARE THREE POLE.
2. ALL ELECTRICAL EQUIPMENT AND WIRING SHOWN IN A LIGHT LINE, IS EXISTING TO REMAIN.
3. ALL ELECTRICAL EQUIPMENT AND WIRING SHOWN IN A DARK LINE, IS NEW WORK UNDER THIS CONTRACT.
4. ALL ELECTRICAL EQUIPMENT AND WIRING SHOWN IN A DARK DASHED LINE, IS TO BE REMOVED UNDER THIS CONTRACT.



1 ELECTRICAL ONE-LINE DIAGRAM - PROPOSED

NO SCALE

- STEP 1
- A. 17KVA LIGHTING
 - B. 75KVA MISC. POWER
 - C. (2)10HP MOTOR LOAD
 - D. (1)15HP MOTOR LOAD
- STEP 2
- A. 350HP MOTOR LOAD
- STEP 3
- A. 4.5KVA MISC. POWER LOAD
 - B. 350HP MOTOR LOAD



4			
3			
2			
1	CONSTRUCTION DOCUMENTS		03-04-21
No.	Revision	By	Date
CITY OF WICHITA, KANSAS			
ELECTRICAL ONE-LINE DIAGRAM - PROPOSED			
STANDBY POWER GENERATION - SOUTHEAST PUMP STATION			
Professional Engineering Consultants, P.A. 303 S. TOPEKA • WICHITA, KANSAS 67202 316-262-2691 • FAX 316-262-3003			
Designed by	DCG	Job No.	180537-000
Drawn by	JAR	Checked by	DCG
Date	MARCH 2021	Dwg No.	E602

Saved: 03-04-2021 11:37:08 AM by JOSE RAMOS
 Plot Scale: 1:5.379008 03-04-2021 11:56:41 AM by JOSE RAMOS
 U:\Wichita-Facility\180537\000\Elec\Drawings\180537-000 - E602