

## LIGHTING FIXTURE SCHEDULE (P.E.C.)

FIXT. LTR.	MANUFACTURER CATALOG NUMBER	MANUFACTURER CATALOG NUMBER	MANUFACTURER CATALOG NUMBER	MANUFACTURER CATALOG NUMBER	DESCRIPTION SEE NOTES	LAMP TYPE			LENS/LOUVER/FINISH	W	L	D
						NO.	VOLTS	REMARKS				
D	EXISTING FIXTURE TO BE REMOVED											
HB	WILLIAMS 81-4-1180/840-FP-C22/118/10-DRY-UNV	COLUMBIA PEL4-40MM-FP-EU-LHVQM10	LITHONIA 83N-1800LM-FST-FL-GRD-WM-L-6210-4K-80CR-UNV	OR PRE-APPROVED EQUAL	LOW BAY WHITE FINISH	126W	UNV	1800LM;4000K;80CRI				
HBE	WILLIAMS 81-4-1180/840-FP-C22/118/10-DRY-UNV-EM/10W	COLUMBIA PEL4-40MM-FP-EU-LHVQM10-ELL14	LITHONIA 83N-1800LM-FST-FL-GRD-WM-L-6210-4K-80CR-UNV-520K	OR PRE-APPROVED EQUAL	LOW BAY WHITE FINISH	126W	UNV	1800LM;4000K;80CRI SURFACE MOUNT TO BOTTOM OF STRUCTURE W/90 MIN BATTERY				
G2	WILLIAMS 75-2-L25/840-DRY-UNV	COLUMBIA MPS2-40-MW-FW-EU	LITHONIA ZLN-124-2500LM-FST-WM-L-4K-80CR-UNV	OR PRE-APPROVED EQUAL	WALL MTD STRIP	19W	UNV	1800LM;4000K;80CRI				
P14	MCGRAW EDISON GLEON-SAZA-730-U-14FT-AP	OR PRE-APPROVED EQUAL			POLE MTD BLACK	66W	UNV	9500LM;3000K;70CRI BLACK POLE AND FIXTURE				
S4E	WILLIAMS 75-4-150/840-AC/D24-DRY-UNV-EM/10W	COLUMBIA MPS4-40-ML-FW-EU-CM24S33-KIT-ELL14	LITHONIA ZLN-148-5000LM-FST-WM-L-4K-80CR-UNV-720K-FL000P	OR PRE-APPROVED EQUAL	4' STRIP	34W	UNV	5000LM;4000K;80CRI WHITE W/90 MIN BATTERY				
W4	LUMARK XTORG6B-Y-BK	GARDCO 121-16L-1200-WW-04-4-UNV-BK	LITHONIA KAXW-P2-30K-R4-120-DBLXD	OR PRE-APPROVED EQUAL	TYPE IV WALL PACK	60W	UNV	6000LM;3000K;70CRI BLACK				

- GENERAL CONTRACTOR SHALL PROVIDE FIREPROOFING AROUND RECESSED FIXTURES INSTALLED IN FIRE RATED CEILING PER U.L. REQUIREMENTS. ELECTRICAL CONTRACTOR WILL COORDINATE.
- MANUFACTURERS LISTED IN THIS SCHEDULE OR APPROVED BY WRITTEN ADDENDUM WILL BE THE ONLY APPROVED MANUFACTURERS TO BID THE LIGHTING FIXTURES FOR THIS PROJECT. CONTRACTORS AND SUPPLIERS USING PRICING FROM MANUFACTURERS NOT LISTED ON SCHEDULE OR BY ADDENDUM DO SO AT THEIR OWN RISK.
- LIGHT FIXTURE SELECTIONS ARE BASED ON THE MANUFACTURER IN THE LEFT MOST COLUMN AS LISTED IN THE SCHEDULE. FIXTURES APPROVED AS EQUALS IN THIS SCHEDULE OR BY ADDENDUM SHALL BE EQUAL TO THE UNIT SPECIFIED IN THE LEFT MOST COLUMN, IE: SPRING LOADED LATCHES, POST PAINTED FINISH, AND PHOTOMETRICS.
- ALL LIGHT FIXTURES SHALL BE SECURED TO THE CEILING FRAMING SYSTEM BY MECHANICAL MEANS (SUCH AS BOLTS, SCREWS, OR RIVETS) OR BY CLIPS IDENTIFIED FOR USE WITH THE TYPE OF CEILING FRAMING MEMBER AND LIGHT FIXTURE.
- LIGHT FIXTURES SHALL BE PROVIDED WITH 0-10V DIMMING DRIVERS. DRIVERS SHALL BE CAPABLE OF DIMMING TO A MINIMUM OF 10% OF TOTAL LIGHT OUTPUT. LED DRIVERS SHALL HAVE A DISCONNECTING MEANS MEETING THE REQUIREMENTS OF NEC SECTION 410.130(G), EXCEPT FOR THOSE INSTALLED IN CORD-AND-PLUG CONNECTED FIXTURES. WHERE APPLICABLE, WHEN DIMMING SWITCHES ARE NOT PROVIDED AS PART OF THE DESIGN, CONTRACTOR SHALL CAP OFF 0-10V DIMMING WIRES FOR FUTURE EXTENSION BY OWNER.
- 20'-0" OVERALL MOUNTING HEIGHT, CONTRACTOR TO PROVIDE ROUND TAPERED STEEL POLE. PROVIDE WITH HAND-HOLES AND BOLT COVERS. POLE TO MEET TOTAL FIXTURE EPA REQUIREMENTS AT 90MPH WITH A 1.3 GUST FACTOR.

## EQUIPMENT CONNECTION SCHEDULE

MECHANICAL EQUIPMENT CONNECTIONS											
UNIT DESIG.	UNIT VOLTAGE	LOAD			PANEL DEVICE			DEVICE AT UNIT			REMARKS OR SEE THE FEEDER SCHEDULE OR NOTES BELOW
		H.P.	FLA	KVA	CIRCUIT NUMBER	BKR/SW/FUSE	NEMA START SIZE	BKR/SW/FUSE	NEMA START SIZE	OTHER	
OU	OUTDOOR UNIT										
1	208/1	16A	16.0	3.328	LP1:17	40	2	30	25	1" NEMA-3R	1 2 #8 AWG THHN; #10 AWG GRD; 3/4" C.
2	208/1	16A	16.0	3.328	LP1:21	40	2	30	25	1" NEMA-3R	1 2 #8 AWG THHN; #10 AWG GRD; 3/4" C.
DSS	DUCTLESS SPLIT SYSTEM										
1	208/1				LP1:17	40	2			2 MMS	1 2 #8 AWG; #10 AWG GRD; 3/4"
2	208/1				LP1:21	40	2			2 MMS	1 2 #8 AWG; #10 AWG GRD; 3/4"

- ALL CONNECTIONS AND ELECTRICAL EQUIPMENT LISTED IN SCHEDULE SHALL BE PROVIDED AND INSTALLED BY THE ELECTRICAL CONTRACTOR. FIELD VERIFY CONNECTION REQUIREMENTS AND EQUIPMENT PROVIDED BY OTHERS PRIOR TO ROUGH-IN.
- REFER TO MECHANICAL DRAWINGS AND SPECIFICATIONS FOR THE REQUIREMENTS ASSOCIATED WITH WIRING AND CONNECTIONS OF INTERLOCKING, THERMOSTAT LOCATIONS, EXHAUST FAN CONTROL SWITCHES, AND OTHER CONTROLS OF MECHANICAL EQUIPMENT.
- SIZE FUSES FOR MOTOR FUSTATS BASED ON 125% OF MANUFACTURER'S NAMEPLATE FULL LOAD AMPERAGE UNLESS OTHERWISE NOTED ON THE DRAWINGS.
- MINI-SPLIT SYSTEM: INDOOR UNIT IS FED FROM THE OUTDOOR UNIT, PROVIDE INTERCONNECTING WIRING AS REQUIRED. PROVIDE A 3-POLE MANUAL MOTOR STARTING SWITCH WITHOUT OVERLOADS FOR INDOOR LOCAL DISCONNECTING MEANS. PROVIDE WITH APPROPRIATE COVERPLATE. FIELD VERIFY ALL CONNECTION REQUIREMENTS PRIOR TO ROUGH-IN WITH EQUIPMENT PROVIDED.

### EXISTING CONTROL PANEL

LOCATION: BOOSTER PUMP STATION NEMA-1

CIRCUIT NO.	EQUIPMENT SERVED/MARK	CONNECT				DESCRIPTION/FUNCTION	CONDUCTORS IN CABLE	DISCRETE	ANALOG	DIGITAL	INPUT	OUTPUT	REMARKS
		DEVICES	CTL.	PHL	STARTER								
1	GENERATOR 1	X	-	-	-	RUN STATUS	2	X	-	-	-	-	PROVIDE SURGE PROTECTION PER 27 40 00, 2,2, B
2		-	X	-	-	FAIL	2	X	-	-	-	-	PROVIDE SURGE PROTECTION PER 27 40 00, 2,2, B
3		-	X	-	-	LOW FUEL	2	X	-	-	-	-	PROVIDE SURGE PROTECTION PER 27 40 00, 2,2, B
4		-	X	-	-	RUN STATUS	2	X	-	-	-	-	PROVIDE SURGE PROTECTION PER 27 40 00, 2,2, B
5	FUTURE GENERATOR 2	X	-	-	-	FAIL	2	X	-	-	-	-	PROVIDE SURGE PROTECTION PER 27 40 00, 2,2, B
6		-	X	-	-	LOW FUEL	2	X	-	-	-	-	PROVIDE SURGE PROTECTION PER 27 40 00, 2,2, B
7		-	X	-	-	RUN STATUS	2	X	-	-	-	-	PROVIDE SURGE PROTECTION PER 27 40 00, 2,2, B
8	FUTURE GENERATOR 3	X	-	-	-	FAIL	2	X	-	-	-	-	PROVIDE SURGE PROTECTION PER 27 40 00, 2,2, B
9		-	X	-	-	LOW FUEL	2	X	-	-	-	-	PROVIDE SURGE PROTECTION PER 27 40 00, 2,2, B
10	GEN. 1 CB	-	X	-	-	CIRCUIT BREAKER STATUS	2	X	-	-	-	-	
11	GEN. 2 CB	-	X	-	-	CIRCUIT BREAKER STATUS	2	X	-	-	-	-	
12	GEN. 3 CB	-	X	-	-	CIRCUIT BREAKER STATUS	2	X	-	-	-	-	
13		-	X	-	-	NORMAL POSITION	2	X	-	-	-	-	
14	ATO	-	X	-	-	EMERGENCY POSITION	2	X	-	-	-	-	
15		-	X	-	-	AUTO/MAN STATUS	2	X	-	-	-	-	
16	ESD	X	-	-	-	GENERATOR EMERGENCY SHUTDOWN PUSH BUTTON	2	X	-	-	-	-	PROVIDE SURGE PROTECTION PER 27 40 00, 2,2, B

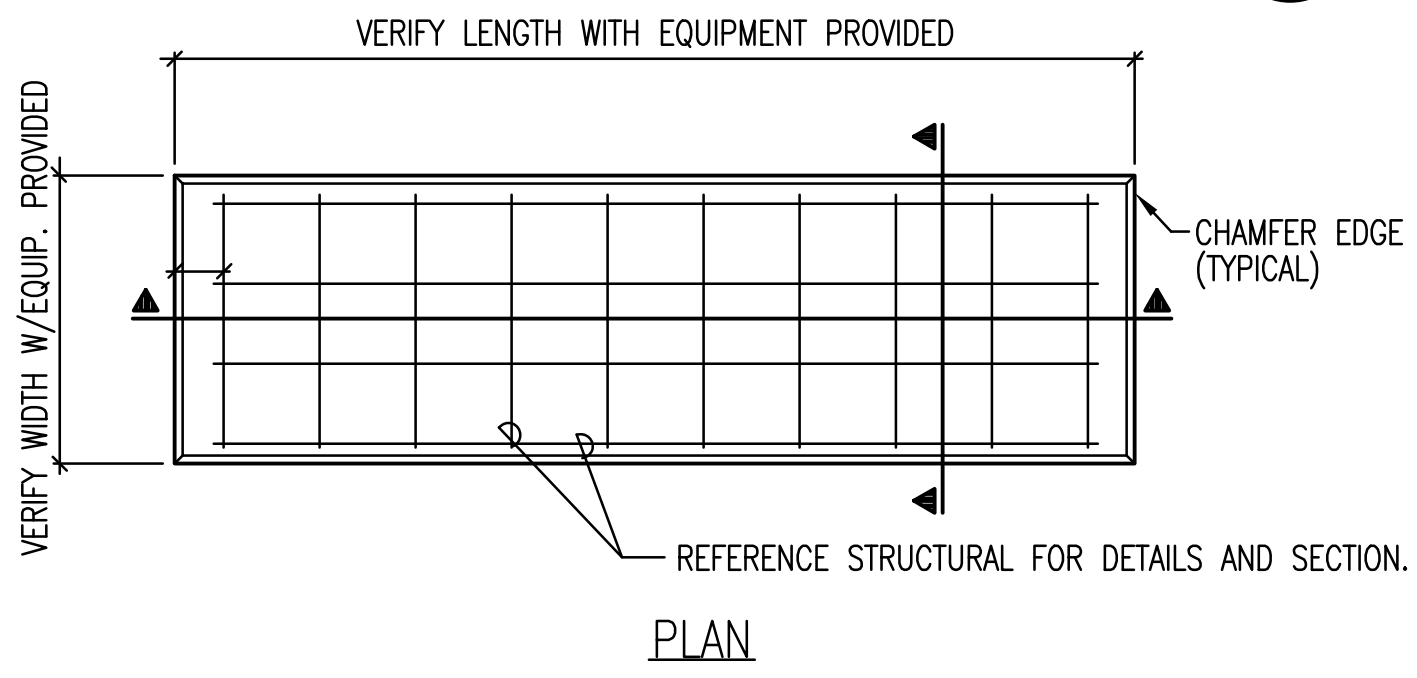
### EXIST. PANEL: LP1

208Y/120 VOLTS, 3 PHASE, 4 WIRE  
100 AMP MLO, SURFACE MTD.

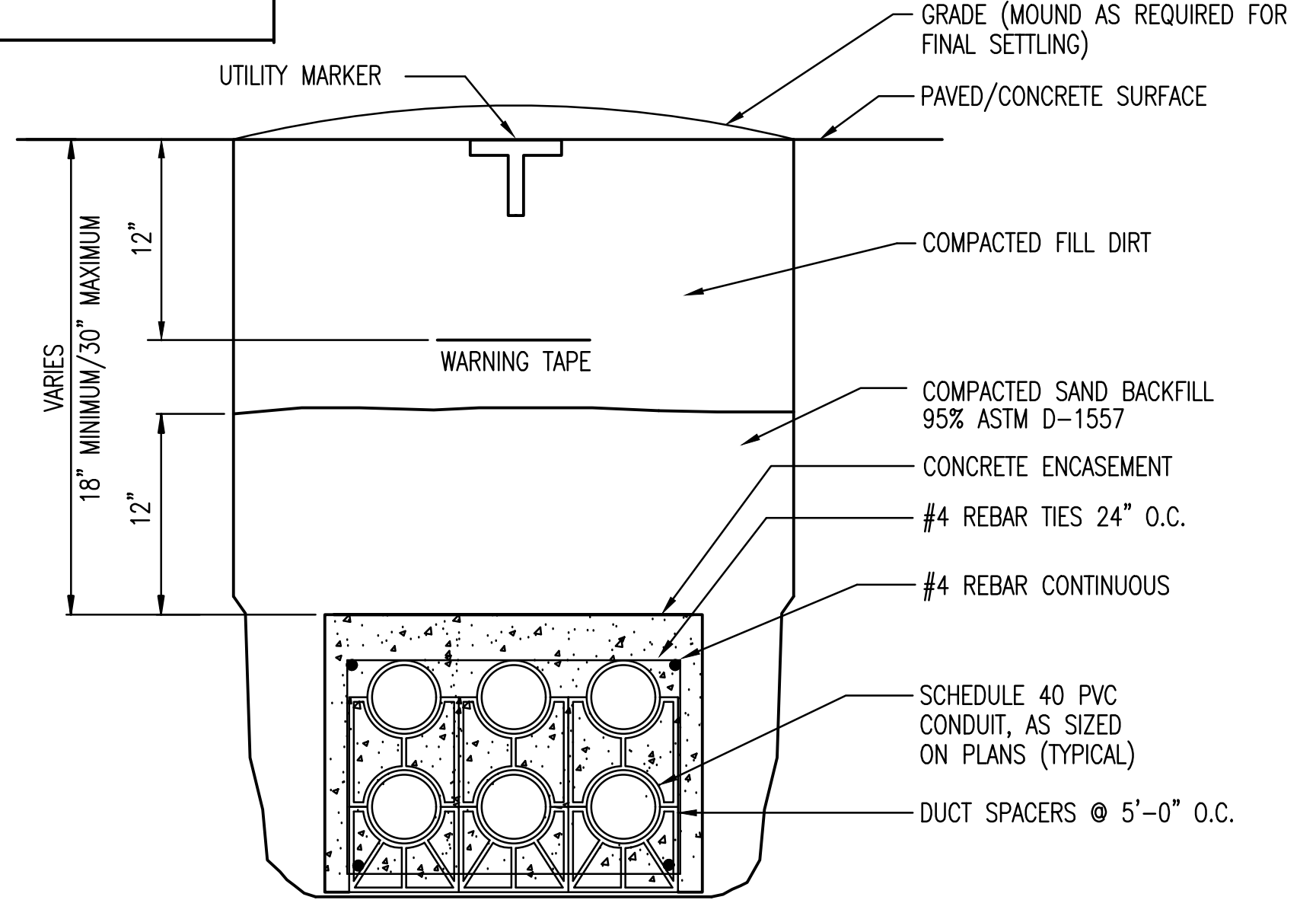
CIRC NO.	LOAD V. A.	LOAD TYPE	LOAD DESCRIPTION	AMP SIZE	AMP SIZE	LOAD DESCRIPTION	LOAD TYPE	LOAD V. A.	CIRC NO.
1			EXISTING LOAD	1 20 A	20	1			2
3			EXISTING LOAD	1 20 B	15	1			4
5			EXISTING LOAD	1 20 C	20	1			6
7			EXISTING LOAD	1 20 A	20	1			8
9			EXISTING LOAD	1 20 B	20	1			10
11			EXISTING LOAD	1 20 C	20	1			12
13			EXISTING LOAD	1 20 A	20	1	GEN BATTERY CHARGER CONNECTION	800	14
15			EXISTING LOAD	1 15 B	20	1	GEN OIL PUMP HEATER CONNECTION	800	16
17	3328	COIL	OU-1,DSS-1	2 40 C	30	2	GEN JACKET HEATER CONNECTION	800	18
19									20
21	5325	COIL	OU-2,DSS-2	2 50 B	20	1	LTG CENTER ROW	1008	22
23							POWER LOUVERS	1200	24
25			SPARE	1 20 A	20	1			26
27			SPARE	1 20 B	20	1			28
29			SPARE	1 20 C	20	1			30

- EXISTING PANELBOARD AND CIRCUIT BREAKERS TO REMAIN UNLESS NOTED OTHERWISE.
- PROVIDE AND INSTALL CIRCUIT BREAKER IN EXISTING SPACE. CIRCUIT BREAKER SHALL MATCH EXISTING CIRCUIT BREAKERS AND SHALL BE RATED FOR THE MAX. AIC RATING WITHIN EXISTING PANEL. VERIFY ALL REQUIREMENTS IN FIELD.
- CONNECT TO EXISTING SPARE CIRCUIT BREAKER. UPDATE PANEL DIRECTORY AS REQUIRED.

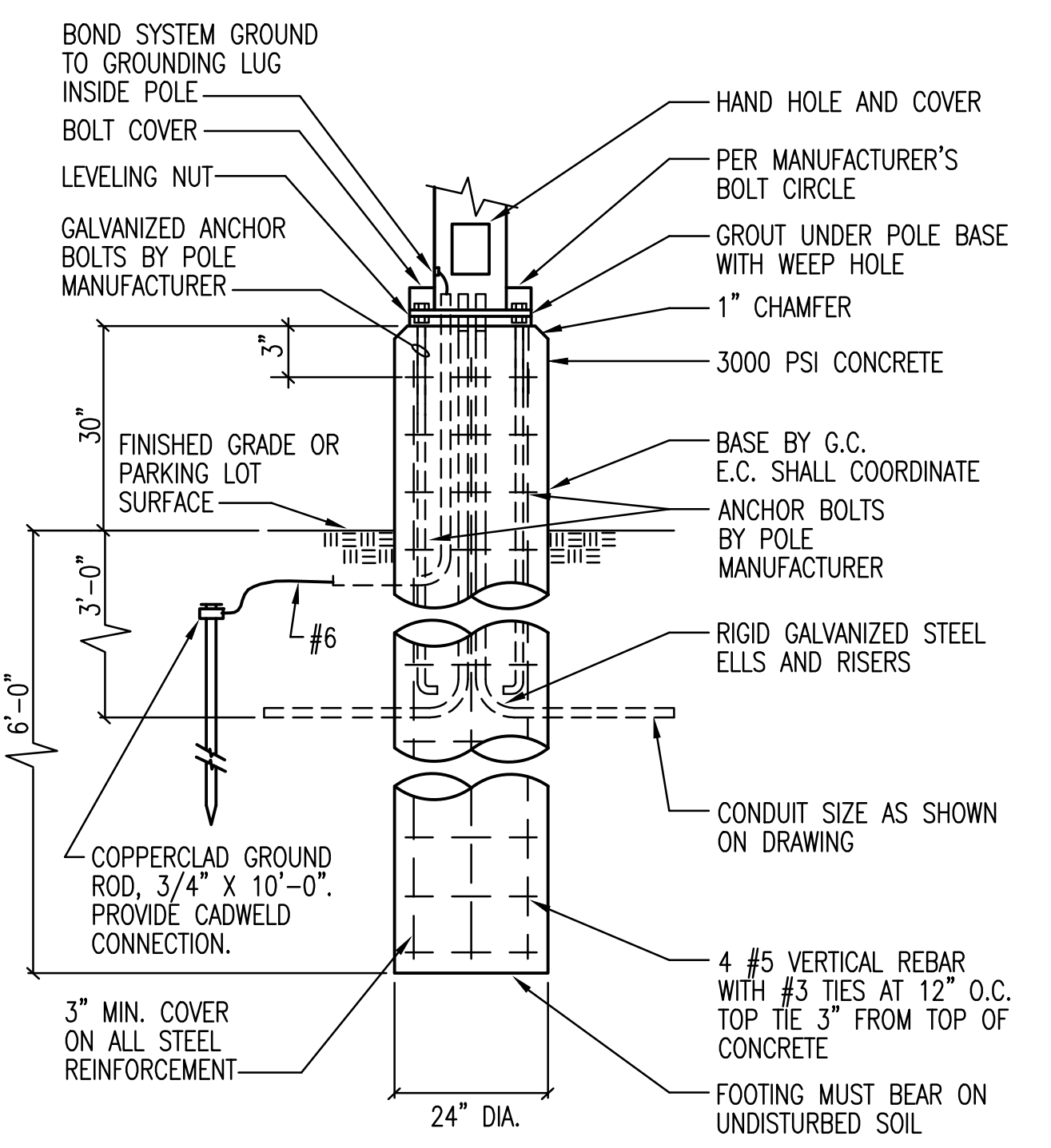
PAD BY G.C./ E.C. TO VERIFY ALL REQUIREMENTS WITH EQUIPMENT PROVIDED PRIOR TO G.C. POURING PAD.



1 ENGINE GENERATOR PAD DETAIL  
NO SCALE

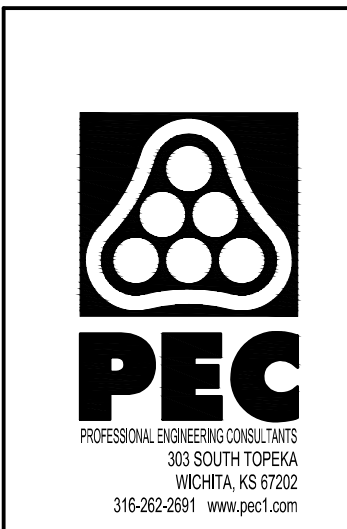


2 DUCTBANK DETAIL - CONCRETE ENCASED  
NO SCALE



3 POLE BASE DETAIL  
NO SCALE (20' MAX. POLE)

Saved 03-04-2021 11:56:27 AM by JOSE RAMOS  
Plot Scale 1:5.379008 03-04-2021 11:56:46 AM by JOSE RAMOS  
U:\Wichita-Facil\180537\000\Elec\Drawings\180537 - E0601



4			
3			
2			
1	CONSTRUCTION DOCUMENTS		03-04-21
No.	Revision	By	Date
CITY OF WICHITA, KANSAS			
ELECTRICAL SCHEDULES			
STANDBY POWER GENERATION - SOUTHEAST PUMP STATION			
Professional Engineering Consultants, P.A. 303 S. TOPSKA • WICHITA, KANSAS 67202 316-262-2691 • FAX 316-262-3003			
Designed by	DCG	Job No.	180537-000
Drawn by	JAR	Checked by	DCG
Date	MARCH 2021	Dwg No.	E611