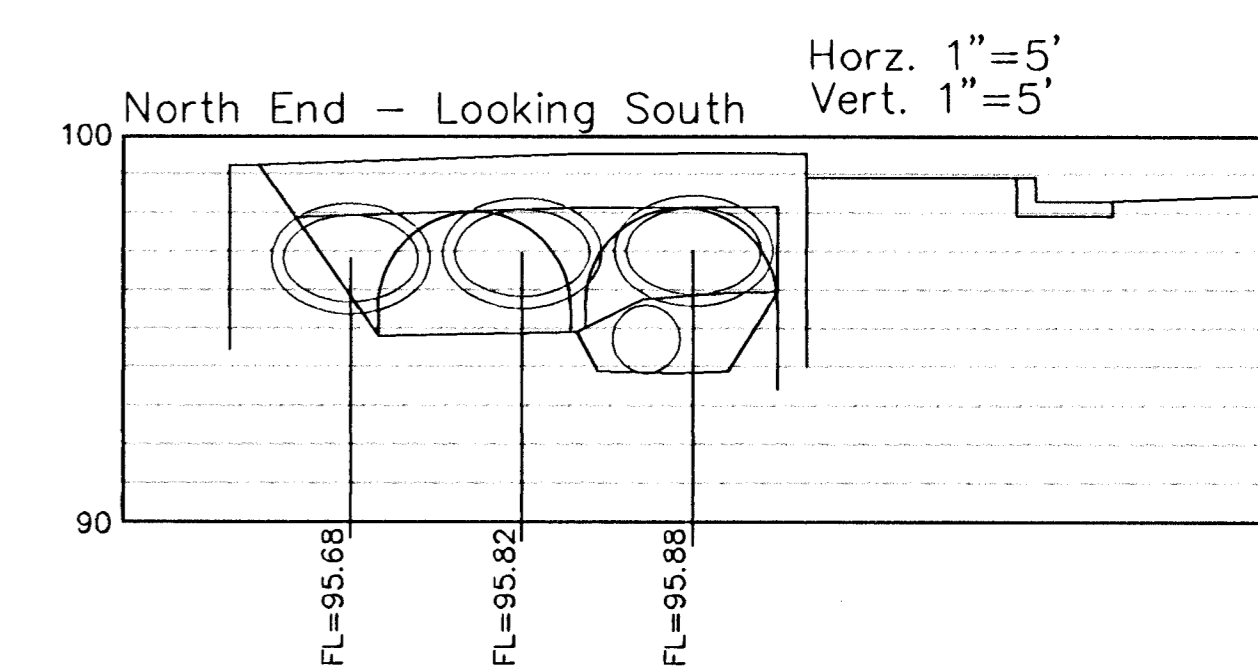
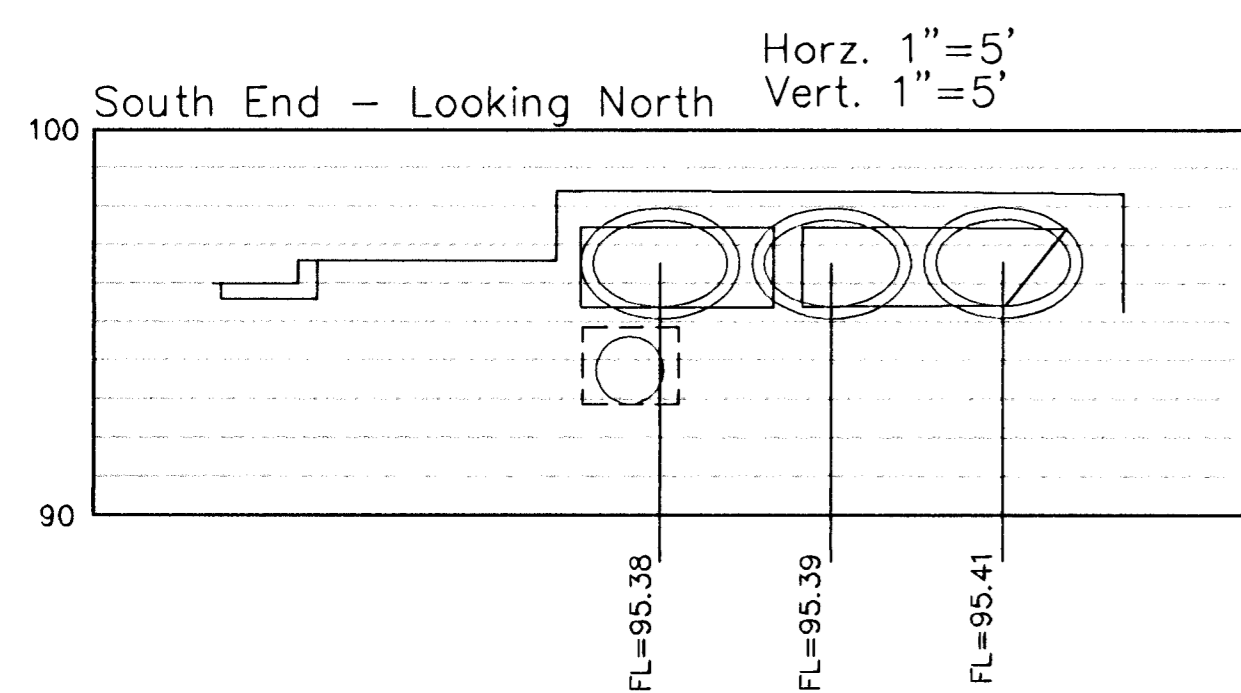
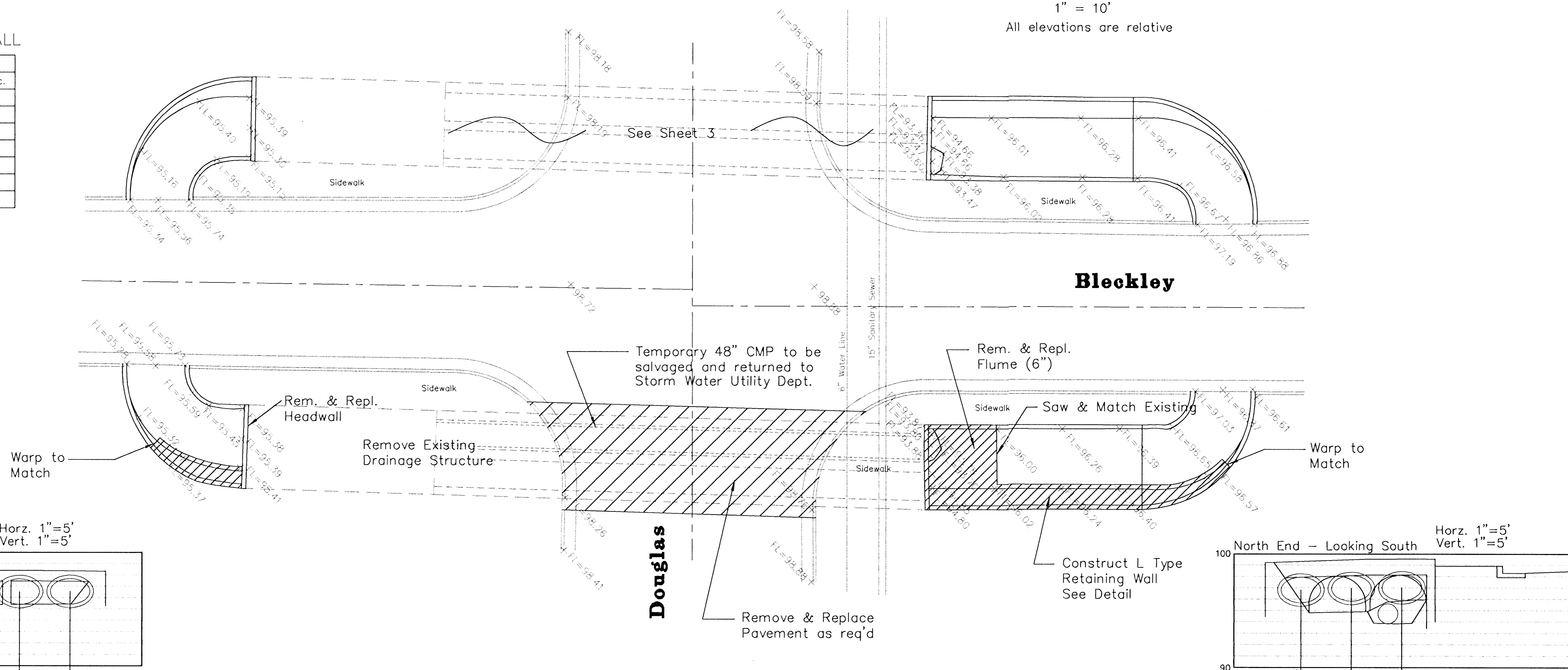
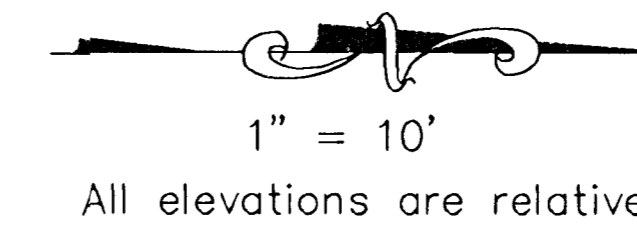
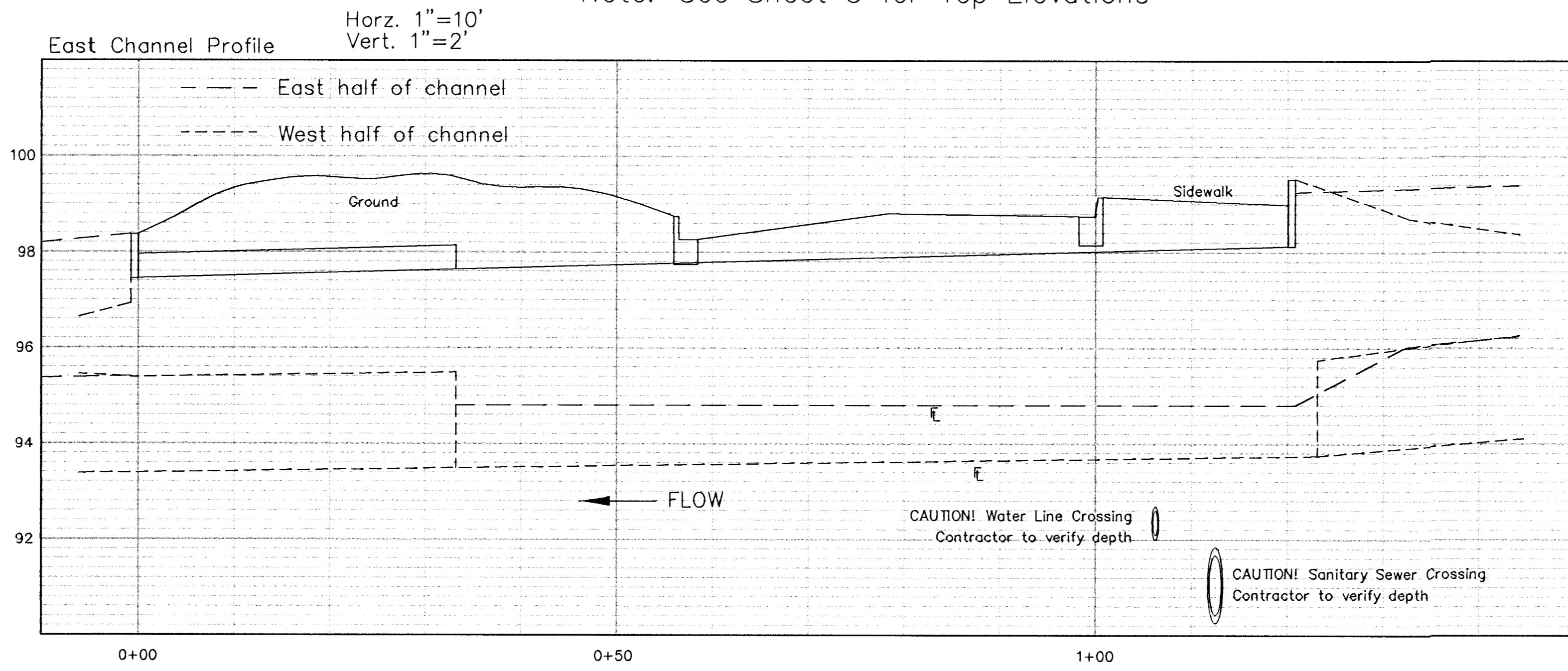


L-TYPE RETAINING WALL

DIMENSIONS		Per Lin. Ft. Ret. Wall	
h	b	Reinf. Stl.	C.Y. Conc.
1'-6"	1'-6"	3.674	0.058
1'-9"	1'-9"	3.896	0.070
2'-0"	2'-0"	4.120	0.083
2'-3"	2'-3"	6.179	0.095
2'-6"	2'-6"	6.485	0.107
2'-9"	2'-9"	6.792	0.120
3'-0"	3'-0"	7.097	0.132



Note: See Sheet 3 for Top Elevations



REINF. STEEL SCHEDULE							
L-TYPE RETAINING WALL							
h	bar	size	cutting length	spacing	d	f	remarks
1'-6"	V1	1/2"	2'-3"	18"	1'-1"	1'-3"	L shape straight
	C	-	4 Horiz	bars continuous			
1'-9"	V1	1/2"	2'-9"	18"	1'-4"	1'-6"	L shape straight
	C	-	4 Horiz	bars continuous			
2'-0"	V1	1/2"	3'-3"	18"	1'-7"	1'-9"	L shape straight
	C	-	4 bars	continuous			
2'-3"	V1	1/2"	3'-9"	36"	1'-10"	2'-0"	L shape straight
	V2	-	3'-0"	36"	1'-1"	2'-0"	straight
	V3	-	2'-0"	24"	1'-1"	2'-0"	straight
	C	-	6 Horiz	bars continuous			
2'-6"	V1	1/2"	4'-3"	36"	2'-1"	2'-3"	L shape straight
	V2	-	3'-6"	36"	1'-4"	2'-3"	straight
	V3	-	2'-3"	24"	1'-4"	2'-3"	straight
	C	-	6 bars	continuous			
2'-9"	V1	1/2"	4'-9"	36"	2'-4"	2'-6"	L shape straight
	V2	-	4'-0"	36"	1'-7"	2'-6"	straight
	V3	-	2'-6"	24"	1'-7"	2'-6"	straight
	C	-	6 bars	continuous			
3'-0"	V1	1/2"	5'-3"	36"	2'-7"	2'-9"	L shape straight
	V2	-	4'-6"	36"	1'-10"	2'-9"	straight
	V3	-	2'-9"	24"	1'-10"	2'-9"	straight
	C	-	6 bars	continuous			

\* Alternate V and V at 18" centers

