

PHASE I
PAVING PLANS FOR
SOUTH SENECA

FROM S.L. 55TH ST. SOUTH TO S.L. 48TH ST. SOUTH

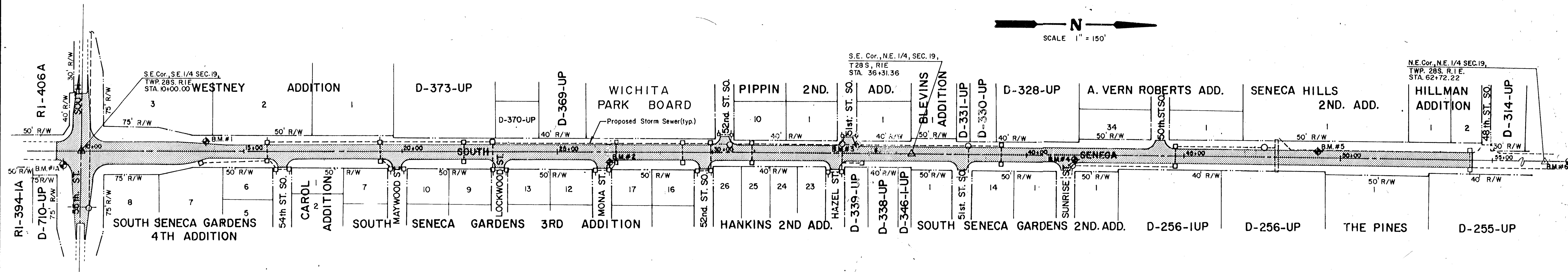
PROJECT NO.
472-76-245-82008-000-000-001

CITY OF WICHITA, KANSAS
MICHAEL E. LINDEBAK, CITY ENGINEER

INDEX NO.

INDEX TO DRAWINGS

SHEET NO.	DESCRIPTION
1	TITLE SHEET
2	GENERAL NOTES & DETAILS
3	TYPICAL SECTIONS
4	INTERSECTION DETAILS
5-14	PAVING PLANS
15	STANDARD DRIVE ENTRANCE
16	TYPE IA INLET HOOKUP DETAILS
17-26	PAVEMENT MARKING PLAN
27	COLD PLASTIC PAVEMENT MARKING
28	SIGNING DETAILS
29	TRAFFIC SIGNAL PLAN
30	SIGNAL QUANTITIES SHEET
31-36	SIGNAL DETAILS
37-58	PAVING CROSS SECTIONS

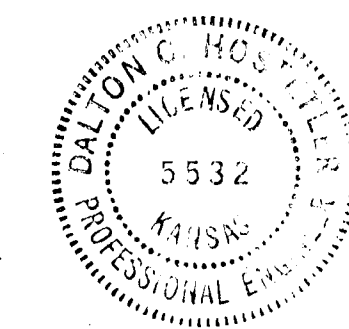


BENCHMARKS

- B.M.#1A City of Wichita B.M. Disc 30' S. & 45' E of E of Seneca & 55TH ST. ELEV. = 80.723
- B.M.#1 Near Sta. 14 + 14, 26' Lt. Spike step on pole. ELEV. = 83.10'
- B.M.#2 Near Sta. 26 + 65, 30' Rt. Spike step West face of pole. ELEV. = 82.91'
- B.M.#3 Near Sta. 34 + 58, 28' Lt. Spike step East face of pole. ELEV. = 84.15'
- B.M.#4 Near Sta. 41 + 44, 22' Rt. Spike step West face of pole. ELEV. = 84.10'
- B.M.#5 Near Sta. 49 + 46, 25' Lt. Spike step on pole. ELEV. = 85.22'
- B.M.#6 City of Wichita B.M. Disc 74' N. & 44' E of Seneca & 47TH ST. ELEV. = 87.341

LEGEND

- | | | | |
|---|-----------------------------|----|----------------------|
| ○ | ELECTRIC METER POLE | — | FENCE |
| ● | POWER POLE | TP | TELEPHONE POLE |
| ○ | WATER VALVE | □ | TELEPHONE PEDESTAL |
| ○ | DEAD MAN | ◆ | STREET LIGHT |
| — | UNDERGROUND TELEPHONE CABLE | ◆ | SIGN |
| ● | TREE | ○ | FIRE HYDRANT |
| ● | PINE or CEDAR TREE | ○ | GUY POLE |
| ○ | CABLE TV | ○ | TRANSFORMER POLE |
| ○ | GAS LIGHT | ○ | SPRINKLER |
| ○ | HIGH VOLTAGE POWER POLE | — | SPLIT RAIL FENCE |
| — | GUARD POST | — | R/W or PROPERTY LINE |
| □ | GAS METER | ■ | MAILBOX |
| □ | WATER METER | — | DITCH |
| ○ | MANHOLE | — | GAS LINE |
| ○ | BENCH MARK | — | WATER LINE |
| — | STORM or SANITARY SEWER | — | SECTION LINE |
| △ | SECTION CORNER | | |



	SOUTH SENECA IMPROVEMENTS	Design DCH
	TITLE SHEET	Drawn by ALL
55TH ST. SO. TO 48TH ST. SO.		Checked by
MID-KANSAS ENGINEERING CONSULTANTS PA 3500 NORTH ROCK ROAD BUILDING #800 WICHITA, KANSAS 67226		Date OCT 1989
636-5566		Job no.
Sheet 1 of 58		MKEC Proj. No. 88-03-113E