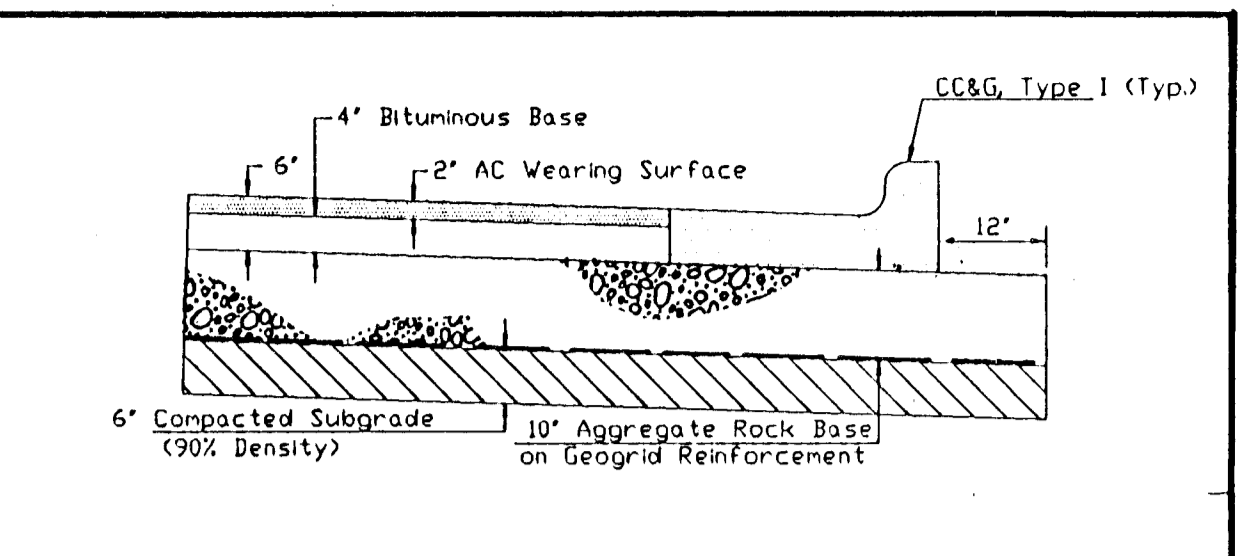


TYPICAL SECTION NO. 1
Sta. 14+70.45 to Sta. 54+36.01



ALTERNATIVE II PAVEMENT SECTION

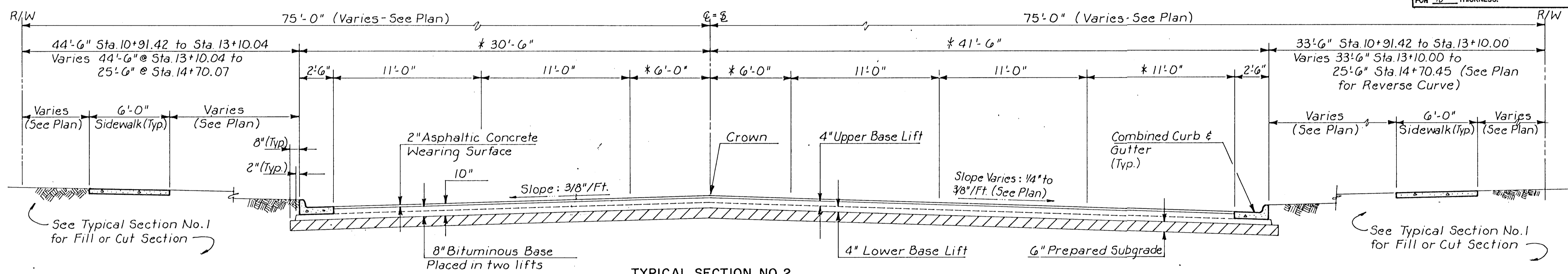
FABRIC BASE REINFORCEMENT SHALL BE 8 X 1100 AS MANUFACTURED BY TENSAR CORPORATION OR APPROVED EQUAL. FABRIC BASE REINFORCEMENT SHALL BE INSTALLED IN ACCORDANCE WITH MANUFACTURER'S RECOMMENDATIONS. CRUSHED ROCK SHALL BE UNIFORMLY GRADED.

PER CENT OF AGGREGATE RETAINED	
2-1/2"	0
3/4"	20 to 60
# 4	50 to 80
# 40	80 to 94
# 200	90 to 98

ROCK QUALITY SHALL CONFORM TO THE REQUIREMENTS SPECIFIED BY K.D.O.T. 1990 EDITION STANDARD SPECIFICATION SUBSECTION 1102 FOR DURABILITY CLASS 1.

ROCK BASE IS TO BE COMPACTED AND SMOOTHED WITH A STEEL FACED ROLLER PRIOR TO PLACEMENT OF ASPHALT. TACK COAT WILL NOT BE APPLIED TO ROCK BASE.

REINFORCED CRUSHED ROCK BASE WILL BE PAID FOR AT THE SQUARE YARD PRICE FOR 10" THICKNESS.



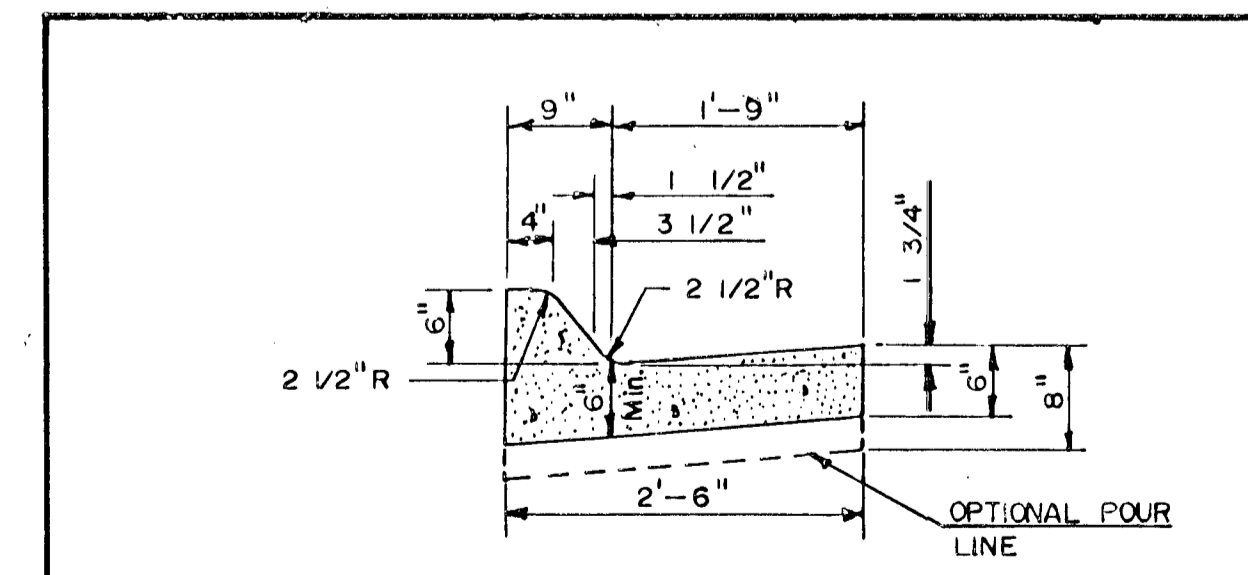
TYPICAL SECTION NO. 2
Sta. 10+91.42 to Sta. 14+70.45
*Varies from Sta. 13+10.00 to Sta. 14+70.45

See Typical Section No. 1 for Fill or Cut Section

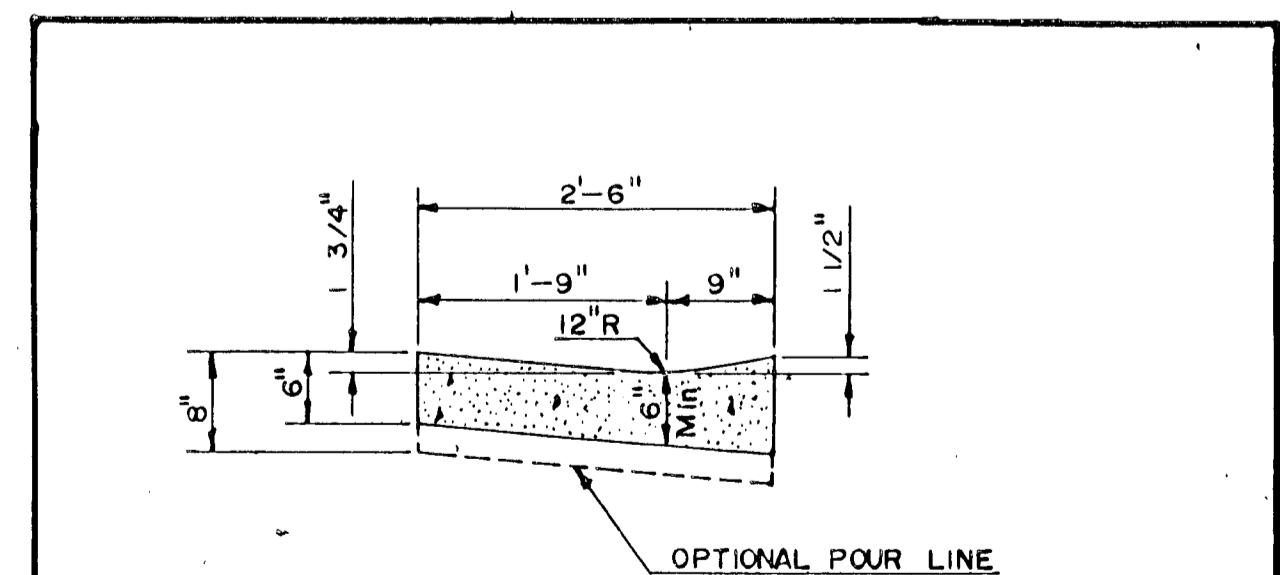
See Typical Section No. 1 for Fill or Cut Section

NOTES

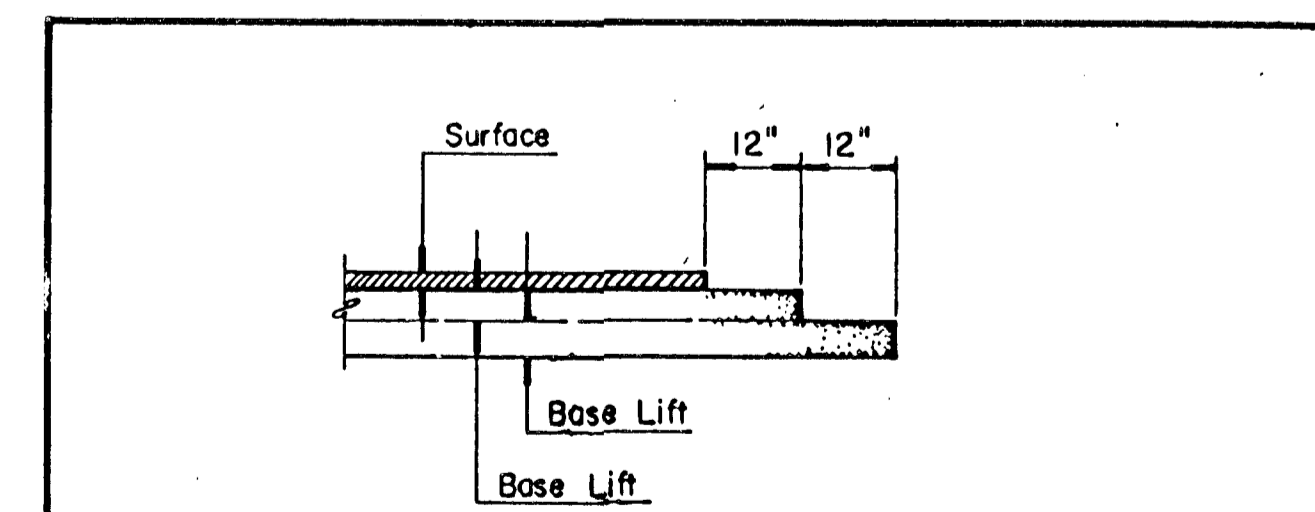
1. THE ASPHALTIC CONCRETE PAVEMENT BETWEEN THE COMBINED CURB AND GUTTER SHALL BE PAID AS SQUARE YARDS OF 10" ASPHALTIC CONCRETE (8" BITUMINOUS BASE).
2. THE BITUMINOUS BASE UNDER AND BEHIND THE COMBINED CURB AND GUTTER SHALL BE PAID AS SQUARE YARDS OF 4" BITUMINOUS BASE.
3. A TACK COAT OF EMULSIFIED ASPHALT (SC-1H OR CSS-1H) SHALL BE APPLIED AT AN APPROXIMATE RATE OF 0.05 GALLONS PER SQUARE YARD BETWEEN EACH LIFT OF ASPHALTIC MATERIAL.
4. BITUMINOUS BASE AND ASPHALTIC CONCRETE WEARING SURFACE SHALL BE PLACED WITH A LAYDOWN MACHINE HAVING AUTOMATIC CONTROLS FOR LINE AND GRADE.
5. CONSTRUCTION JOINTS IN EACH LIFT SHALL BE STAGGERED A MINIMUM DISTANCE OF ONE (1) FOOT FROM JOINTS IN PRECEDING LIFTS AND PLACED SO THAT A JOINT WILL BE CONSTRUCTED ON THE CENTERLINE OF THE TOP LIFT.
6. OFFSET AND RADIUS DIMENSIONS SHOWN ON PLANS ARE TO FACE OF CURB. CURB ELEVATIONS ARE HIGH EDGE AND TOP OF CURB.



COMBINED CURB & GUTTER - 6 IN.



COMBINED CURB & GUTTER - 1 1/2 IN.



Transverse construction joints shall be constructed in flexible base pavements at locations where pavement joints existing flexible base pavement as shown by the detail. All costs associated with the construction of the Transverse Joint shall be included in the bid price for square yards Asph. Concrete

TRANSVERSE CONSTRUCTION JOINTS

	SOUTH SENECA IMPROVEMENTS	Design Drawn by Checked by Date Job no.
	TYPICAL SECTIONS	Sheet 3 of 58

MID-KANSAS ENGINEERING CONSULTANTS PA
3500 NORTH ROCK ROAD
BUILDING #800
WICHITA, KANSAS 67226
636-5566