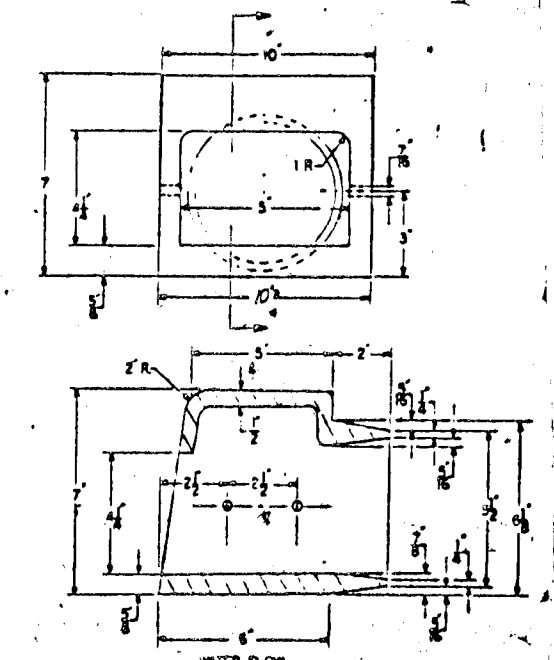
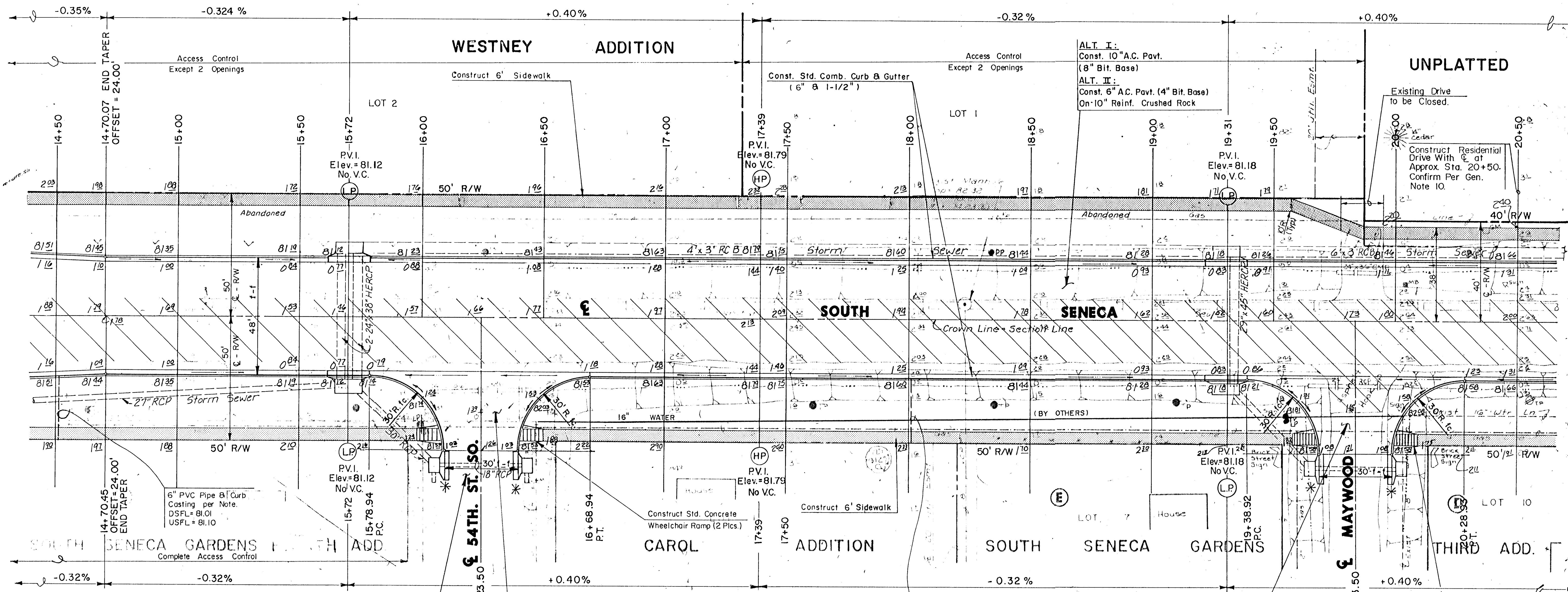




Scale: 1" = 20'



CURB CASTING DETAIL

NOTE: Install Curb Casting, Deeter #2449-6 or approved equal, at curb & gutter. Casting unit shall be anchored with galvanized 3/8" x 2-1/2" bolts. Casting shall be painted two coats of grey paint, applied in accordance with manufacturer's recommendation.

ALT. I:  
Const. 10" Valley Gutter  
6" Reinf. Conc. & A.C. Base  
ALT. II:  
Const. 6" Reinf. Conc. Valley Gutter  
On 10" Reinf. Crushed Rock

6" PVC Pipe & Curb  
Casting per Note.  
DSFL = 81.10  
USFL = 81.50

ALT. I:  
Const. 10" Valley Gutter  
6" Reinf. Conc. & A.C. Base  
ALT. II:  
Const. 6" Reinf. Conc. Valley Gutter  
On 10" Reinf. Crushed Rock

\*Side Street Inlet Hookups are Future Construction and not a part of this project unless specifically stated.

SEWER MANHOLE ADJUSTMENT				WATER VALVE BOX ADJUSTMENT			
STA.	OFFSET	EXIST. ELEV.	PROP. ELEV.	STA.	OFFSET	EXIST. ELEV.	PROP. ELEV.
15+12	5'L	82.17	81.50	16+47	45'R	81.41	81.75
18+23	6'L	82.32	81.68	20+08	40'R	81.10	81.95

**SOUTH SENECA IMPROVEMENTS**

**PAVING PLAN**

55TH ST. SO. TO 48TH ST. SO.

MID-KANSAS ENGINEERING CONSULTANTS PA  
3500 NORTH ROCK ROAD  
BUILDING #800  
WICHITA, KANSAS 67226

636-5566

Sheet **6**  
of **58**