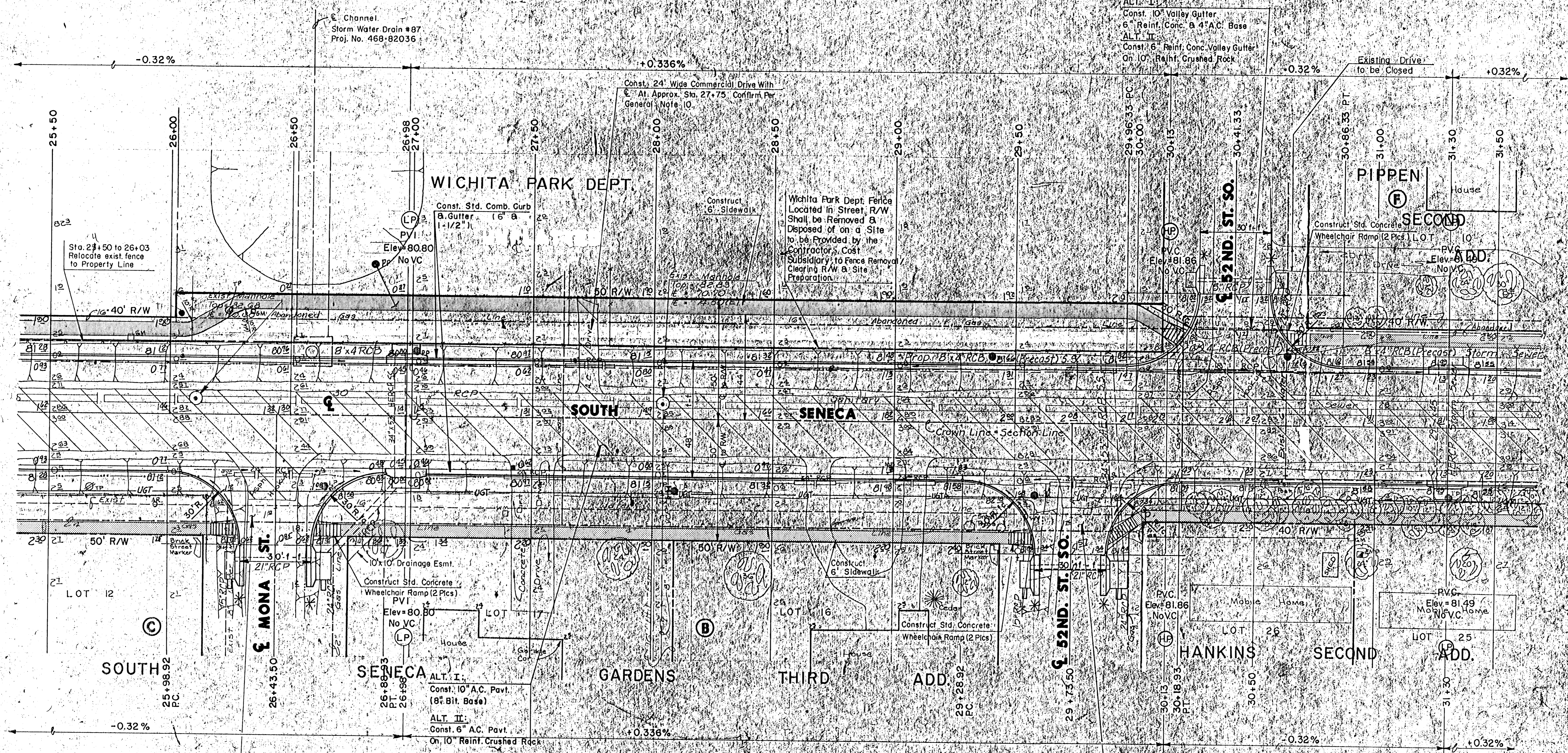




Scale: 1" = 20'

ALT. I:
Const. 10" Valley Gutter
6" Reinf. Conc. & 4" A.C. Base
ALT. II:
Const. 6" Reinf. Conc. Valley Gutter
On 10" Reinf. Crushed Rock



ALT. I:
Const. 10" Valley Gutter
6" Reinf. Conc. & 4" A.C. Base
ALT. II:
Const. 6" Reinf. Conc. Valley Gutter
On 10" Reinf. Crushed Rock

ALT. I:
Const. 10" Valley Gutter
6" Reinf. Conc. & 4" A.C. Base
ALT. II:
Const. 6" Reinf. Conc. Valley Gutter
On 10" Reinf. Crushed Rock

*Side Street Inlet Hookups are Future Construction and not a part of this project unless specifically stated

SEWER MANHOLE ADJUSTMENT				
STA.	DEPTH	EXIST. ELEV.	PROP. ELEV.	NOTES
25+98	38.75	82.22	81.33	Relocated by 0.11'
26+10	30.15	78.43	78.43	Relocated by 0.00'
26+15	30.15	78.43	78.43	Relocated by 0.00'
26+20	30.15	78.43	78.43	Relocated by 0.00'
26+25	30.15	78.43	78.43	Relocated by 0.00'
26+30	30.15	78.43	78.43	Relocated by 0.00'
26+35	30.15	78.43	78.43	Relocated by 0.00'
26+40	30.15	78.43	78.43	Relocated by 0.00'
26+45	30.15	78.43	78.43	Relocated by 0.00'
26+50	30.15	78.43	78.43	Relocated by 0.00'

WATER VALVE BOX ADJUSTMENT				
STA.	DEPTH	EXIST. ELEV.	PROP. ELEV.	NOTES
25+98	38.75	82.22	81.33	Relocated by 0.11'
26+10	30.15	78.43	78.43	Relocated by 0.00'
26+15	30.15	78.43	78.43	Relocated by 0.00'
26+20	30.15	78.43	78.43	Relocated by 0.00'
26+25	30.15	78.43	78.43	Relocated by 0.00'
26+30	30.15	78.43	78.43	Relocated by 0.00'
26+35	30.15	78.43	78.43	Relocated by 0.00'
26+40	30.15	78.43	78.43	Relocated by 0.00'
26+45	30.15	78.43	78.43	Relocated by 0.00'
26+50	30.15	78.43	78.43	Relocated by 0.00'

SOUTH SENECA IMPROVEMENTS

PAVING PLAN

55TH ST. SO. TO 48TH ST. SO.

MID-KANSAS ENGINEERING CONSULTANTS PA
13500 NORTH ROCK ROAD
BUILDING 1800
WICHITA, KANSAS 67228
636-5568

Sheet **8**
of **58**