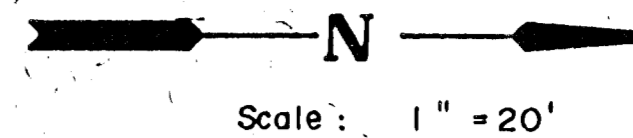


ALT. I:
 Const. 10" Valley Gutter
 6" Reinf. Conc. & 4" A.C. Base
 ALT. II:
 Const. 6" Reinf. Conc. Valley Gutter
 On 10" Reinf. Crushed Rock

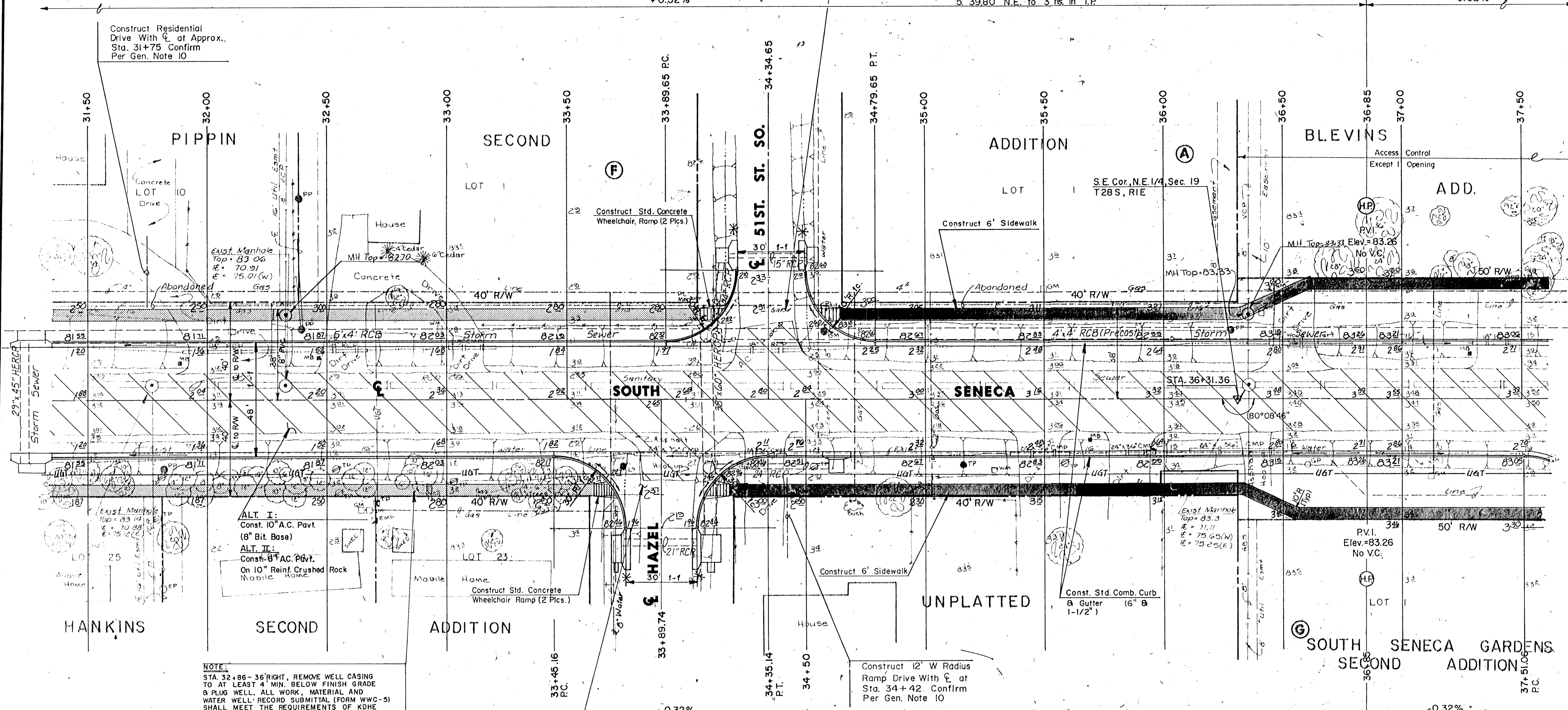
Ref. S.E. Cor., N.E. 1/4, Sta. 36+31.36
 1. 1" Iron Bar
 2. 41.40' S.W. to Face of St. Cor. Post.
 3. 53.90' N.W. to Face of St. Gate Post.
 4. 54.80' S.E. to Face of St. Cor. Post.
 5. 39.80' N.E. to 3 rs. in T.P.



+0.32%

-0.32%

Construct Residential Drive With ϵ at Approx. Sta. 31+75 Confirm Per Gen. Note 10



NOTE:
 STA. 32+86 - 36+81 RIGHT, REMOVE WELL CASING TO AT LEAST 4 MIN. BELOW FINISH GRADE & PLUG WELL. ALL WORK MATERIAL AND WATER WELLS RECORD SUBMITTAL (FORM WWC-5) SHALL MEET THE REQUIREMENTS OF KDHE REGULATIONS, ARTICLE 30 (KAR 28-30-1, ET. SEQ.)

ALT. I:
 Const. 10" Reinf. Conc. Valley Gutter
 6" Conc. & 4" A.C. Base
 ALT. II:
 Const. 6" Reinf. Conc. Valley Gutter
 10" Reinf. Crushed Rock

* Side Street Inlet Hookups are Future Construction and not a part of this project unless specifically stated.

SEWER MANHOLE ADJUSTMENT				WATER VALVE BOX ADJUSTMENT			
STA.	OFFSET	EXIST. ELEV.	PROP. ELEV.	STA.	OFFSET	EXIST. ELEV.	PROP. ELEV.
31+77	6'L	83.14	81.78	33+70	25'R	81.23	81.90
32+32	4'L	83.06	81.95	34+55	20'R	82.14	82.18
36+35	6'L	83.30	83.24				

SOUTH SENECA IMPROVEMENTS

PAVING PLAN

55TH ST. SO. TO 48TH ST. SO.

MID-KANSAS ENGINEERING CONSULTANTS PA
 3500 NORTH ROCK ROAD
 BUILDING #800
 WICHITA, KANSAS 67226

Design: DCH
 Checked: DLM
 Date: OCT. 1989
 Sheet: 9 of 58

636-5566