

SANITARY SEWER EXTENSION

to serve

Lots 5-7, Block 3 Lynch Addition

CITY OF WICHITA, KANSAS

Gary Janßen, P.E. City Engineer

Project Number 468-2019-008093

O.C.A. NO. 744502

Contractor: Dondlinger and Sons

Forman: Bill Budd

Inspector: Roger Skilling

Engineer: Kevin Yale

GENERAL NOTES:

1. The Contractor shall comply with all applicable safety regulations. All construction shall be completed following current City Standard Specifications and Special Provisions.

2. Contractor will be required to provide notice to utility companies a minimum of seventy-two (72) hours prior to any excavation, as follows:

Kansas One-Call 687-2470

The Contractor must notify the following in case of an emergency:

AT&T	1-800-246-8464
Black Hills Energy	1-800-694-8989
City of Wichita Water & Sewer Dept.	1-316-219-8921
City of Wichita Stormwater	1-316-268-4090
City of Wichita Traffic	1-316-268-4034
Cox Communications	1-888-249-3530
Kansas Gas Service	1-888-482-4950
Westar Energy	1-800-544-4857

3. Utility service lines, poles, etc. are to be adjusted as necessary by others prior to construction unless the plans specifically call for their adjustment by the Contractor or unless the plans specifically identify a utility to be adjusted by its owner during construction. Existing utilities and their location, as shown on the plans, represent the best information obtainable for design. The Contractor will be required to work around existing utilities within the right-of-way which do not conflict with proposed construction.

4. Rubble from the removal of miscellaneous structures and excess excavation which is to be wasted shall be disposed of on sites to be provided by the Contractor. These sites shall be approved by the Engineer as to suitability, appearance and site location. Locations, in the opinion of the Engineer, that will leave an unsightly appearance will not be approved. All disposal sites must be approved by the Kansas Department of Health and Environment. Material either stockpiled or disposed of in a flood plain will require a Kansas State Board of Agriculture permit. Any material dumped in waters of the United States or wetlands is subject to U.S. Corps. of Engineers permitting regulations. Any material buried or stockpiled beyond approved construction limits will require additional archaeological investigations unless buried in a previously approved borrow location.

5. Trees and shrubs in public right-of-way which are in direct conflict with proposed new construction shall be removed by the Contractor with the Engineer's approval. Trees and shrubs which are not in direct conflict with proposed new construction shall be saved and protected from damage.

6. The Contractor shall give all property owners and/or tenants of developed property abutting the construction of this project a minimum of ten (10) days notice prior to start of construction.

7. The Contractor shall be responsible for preserving property irons. The Contractor will be required to re-establish any property irons which are damaged or destroyed by his construction operations. Such irons shall be re-established by a licensed land surveyor in accordance with state laws.

8. If traffic will be impacted by construction, a traffic control plan must be submitted and approved by the City Traffic Engineer, Brian Coon at traffic@wichita.gov before construction can begin. The Contractor shall be responsible for all traffic control measures to facilitate construction. All construction cone markings and signage shall conform to the latest version of the Manual on Uniform Traffic Control Devices (MUTCD) as published by the US Dept. of Transportation, Federal Highway Administration. All costs associated with construction markings and signage shall be the Contractors responsibly.

10. All elevations shown are NAVD 88.

11. All areas disturbed during construction that will not be under proposed pavement shall be restored to match existing conditions.

12. The Contractor shall protect from damage and support existing utilities through constructions as approved by the utility owner and the Engineer at the contractors expense.

13. Contractor shall limit the extent of trench openings overnight and weekends to less than 50 feet.

14. All stubs and plugged pipes shall be located with green plastic tape in the same manner as risers.

15. Connecting to Existing Manholes:

Prior to laying sewer lines using existing stubs in existing manholes, the Contractor shall expose and verify the elevation, grade and alignment of existing stubs and notify the Engineer of any deviation from the plans. Where connection to an existing manhole that does not have an existing stub or the stub is unusable due to elevation grade or alignment, the Contractor shall bore cut into existing manhole wall to make connection using approved water stop gasket, and reshape the existing manhole invert to provide smooth flow. The cost to connecting to existing manholes is incidental to the project.

16. Contractor shall provide positive drainage away from all manhole covers.

17. The Contractor shall prevent any construction debris from entering the existing sanitary sewer during construction.

18. The Contractor shall be responsible for maintaining continuous flow of sewage through construction. Contractors proposed method for maintaining sewage flow shall be submitted and approved by the Sewer Maintenance Division (316-268-4073) prior to starting and by-passing of sewage flows.

19. Any over excavation from manhole and/or pipe removal shall be backfilled and compacted in accordance with the Standard Specifications.

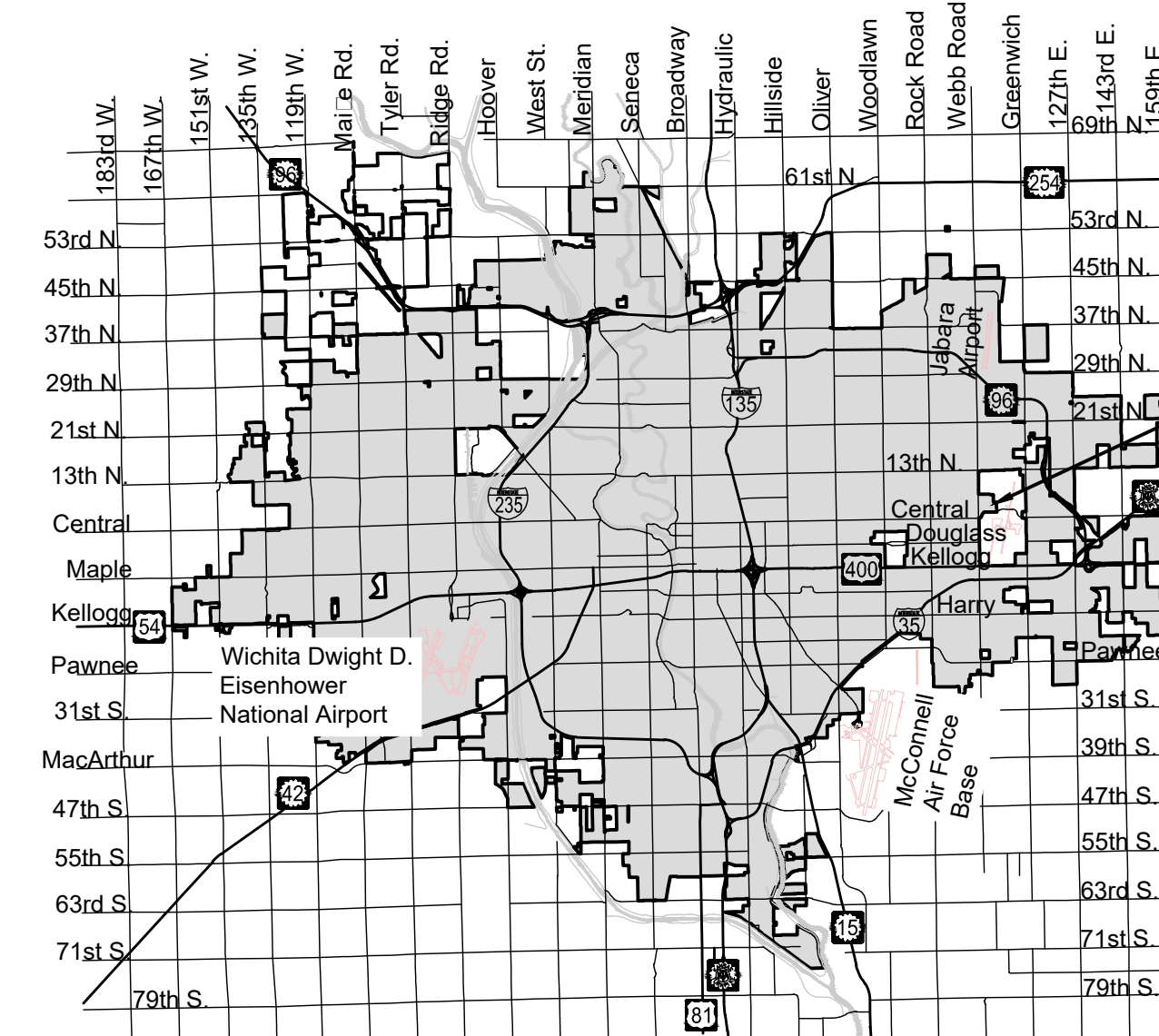
20. No shrink or swell factors have been applied to the earthwork quantities shown on this project. All earthwork quantities are based on raw surface volume comparisons.

21. Excess dirt generated from installation of underground utilities is to be removed from this site.

Benchmarks

BENCHMARK:
POINT 2

CHISELED SQUARE ON SOUTH END OF DRIVEWAY RCP
CULVERT AT 801 N. BEECH STREET.
ELEVATION = 1386.73 (NAVD88)



CORNEJO EAST 2ND

CORNEJO EAST 2ND

LYNCH ADDITION TO TRAVEL AIR CITY

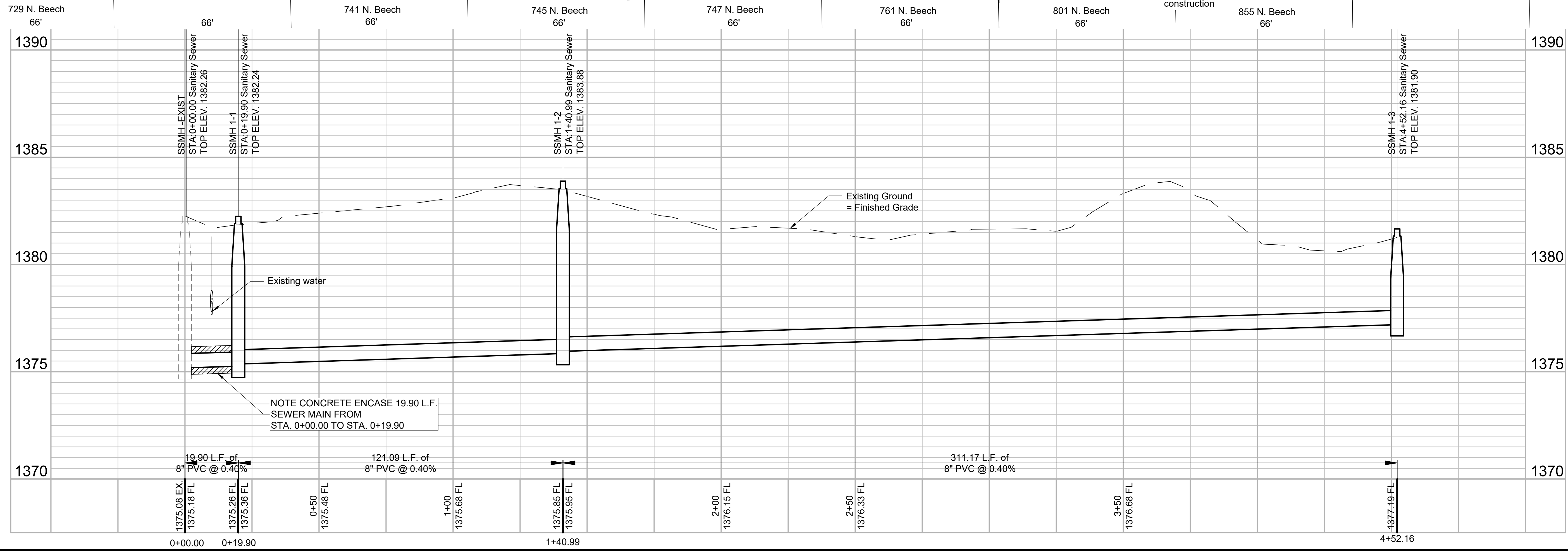
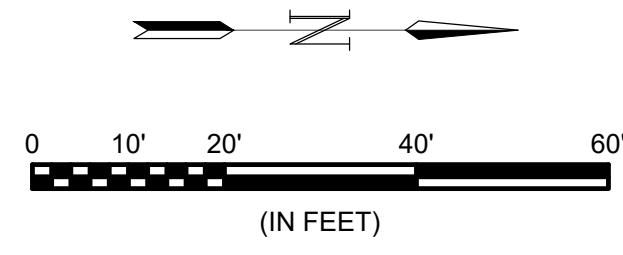
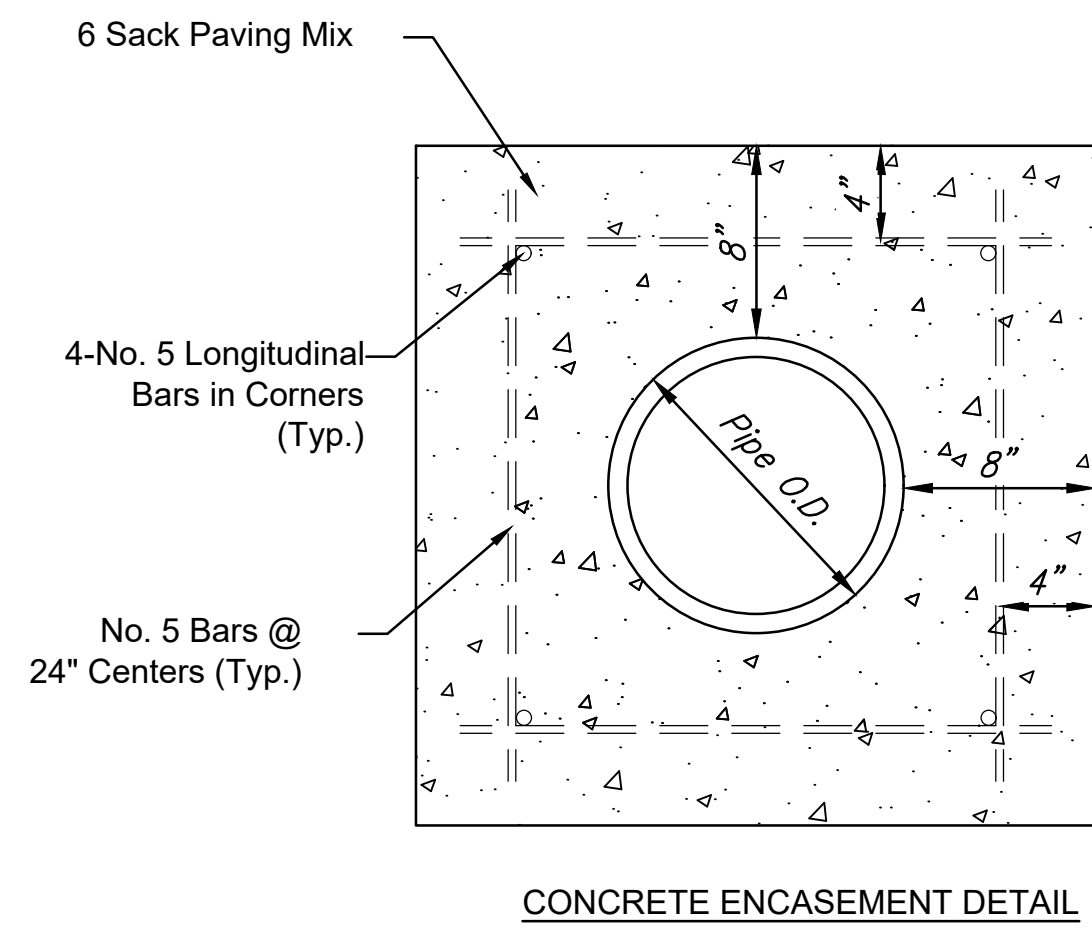
- NOTES:
- TREES SHALL BE TRIMMED AS NECESSARY FOR SANITARY SEWER CONSTRUCTION. TREE TRIMMING SHALL BE DONE WITH CHAINSAWS OR OTHER EQUIPMENT SPECIFICALLY DESIGNED FOR THAT PURPOSE. UNLESS OTHERWISE INDICATED IN THIS PLAN, TREES SHALL ONLY BE REMOVED WITH APPROVAL OF THE FIELD ENGINEER. TRIMMING AND REMOVAL OF TREES SHALL BE INCIDENTAL TO THE BID ITEM FOR SITE CLEARING.
 - UNLESS OTHERWISE NOTED, EXISTING FENCES SHALL BE REMOVED AND RESET AS NECESSARY FOR SEWER CONSTRUCTION. INCIDENTAL TO THE BID ITEM FOR SITE RESTORATION.

SSMH-EXIST
N 1690898.27 E 1682276.49
STA:0+00.00, Sanitary Sewer
CONNECT TO EXISTING MH. CORE DRILL
AND RESHAPE INVERT AS NECESSARY

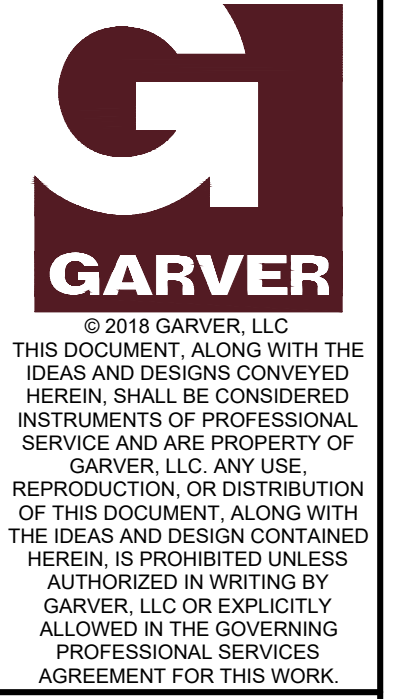
SSMH 1-1
N 1690918.17 E 1682276.16
STA:0+19.90, Sanitary Sewer
CONSTRUCT STD. MANHOLE
D = 4.0'

MH 1-2 adjusted 2' west
station 1+37.99
SSMH 1-2
N 1690920.17 E 1682397.23
STA:1+40.99, Sanitary Sewer
CONSTRUCT STD. MANHOLE
D = 4.0'

REvised 2-21-20
SSMH 1-3
N 1691231.29 E 1682391.91
STA:4+52.16, Sanitary Sewer
CONSTRUCT SHALLOW MANHOLE
D = 4.0'
MH 1-3 adjusted 3' E.



NOTE CONCRETE ENCASE 19.90 L.F. SEWER MAIN FROM STA. 0+00.00 TO STA. 0+19.90



REV.	DATE	DESCRIPTION	BY



CITY OF WICHITA
WICHITA, KANSAS
LYNCH ADDITION
SANITARY

Plan & Profile

JOB NO.: 19T41015
DATE: September 2019
DESIGNED BY: KWL
DRAWN BY: KWL/MCP

BAR IS ONE INCH ON ORIGINAL DRAWING
IF NOT ONE INCH ON THIS SHEET, ADJUST SCALES ACCORDINGLY.

DRAWING NUMBER

SHEET NUMBER 4 OF 5

File: L:\2019\19T41015 - Lynch Addition S&S\Drawings\C3D\19T41015 Engineering Base.dwg Last Save: 9/6/2019 1:20 PM Last saved by: KWL
Last plotted by: Lee, Ken W. Plot Style: ---- Plot Scale: 1:2,8849 Plot Date: 2/21/2020 2:48 PM Plotter used: None