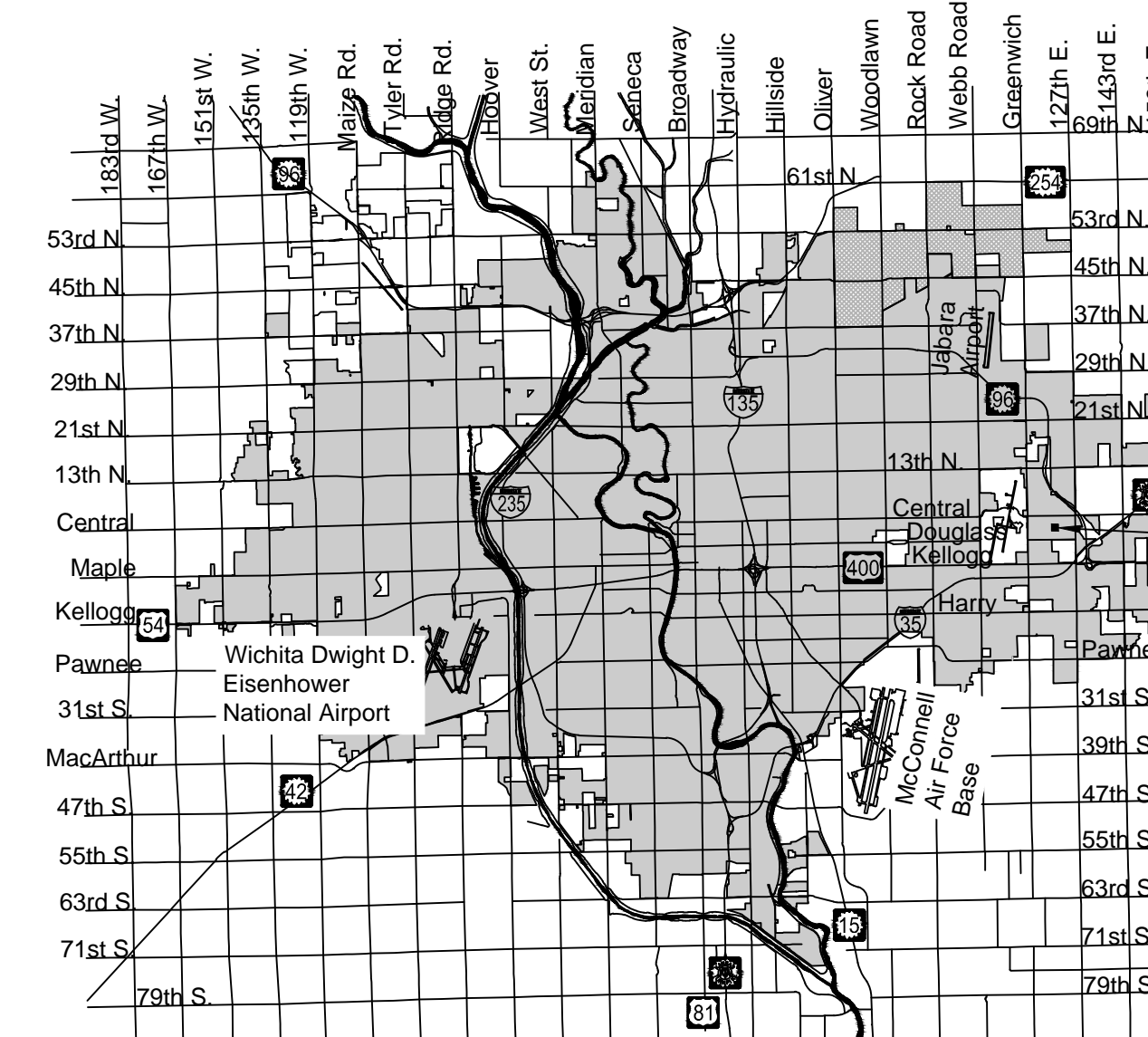


# SANITARY SEWER EXTENSION to serve JACKSON HEIGHTS ADDITION CITY OF WICHITA, KANSAS

Gary Janzen, P.E. City Engineer  
Project Number 468-2020-003352  
O.C.A. NO. 810015

**K. Yale - City of Wichita, Field Project Engineer**  
As-built  
Riser  
Release Date (for connection purposes only): 12/8/2020  
Completion Date:  
pdf: apr 12/9/2020



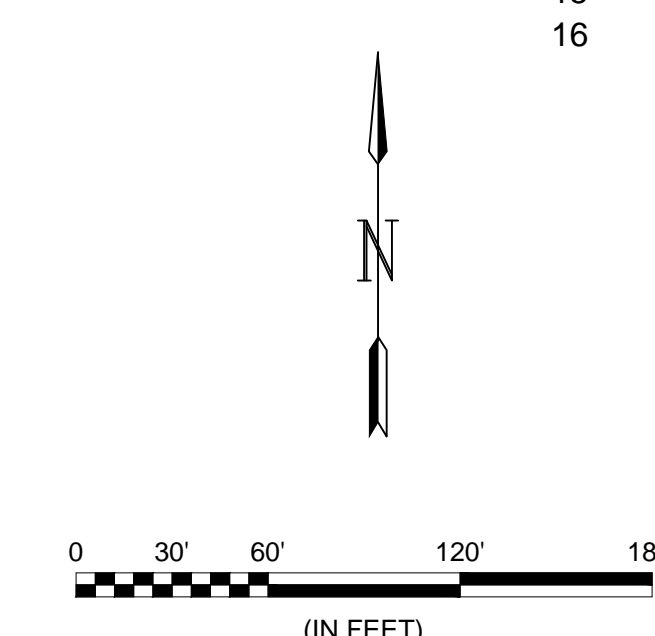
PROJECT  
LOCATION

Vicinity Map

**RECORD DRAWINGS** Client: City of Wichita  
Contractor: Nowak  
Construction Superintendent: Dave Starek  
Inspector: Chris Gambill  
Inspection Firm: Garver  
BY: CAG 11-12-20

Sheet List Table

Sheet Number	Sheet Title
1	SS Titlesheet
2	SS LINE 1
3	SS LINE 2
4	SS LINE 3
5	Pre-Cast SS MH
6	MH Frame & Cover
7	Vertical Riser
8	BUBBLE MAP SS
9	BUBBLE MAP ADDITION
10	EROSION CONTROL PLAN SS
11	SW-501
12	SW-502
13	SW-503
14	SW-504
15	SW-505
16	PLAT - SS



AUGUST 2020

PLANS PREPARED BY



## GENERAL NOTES:

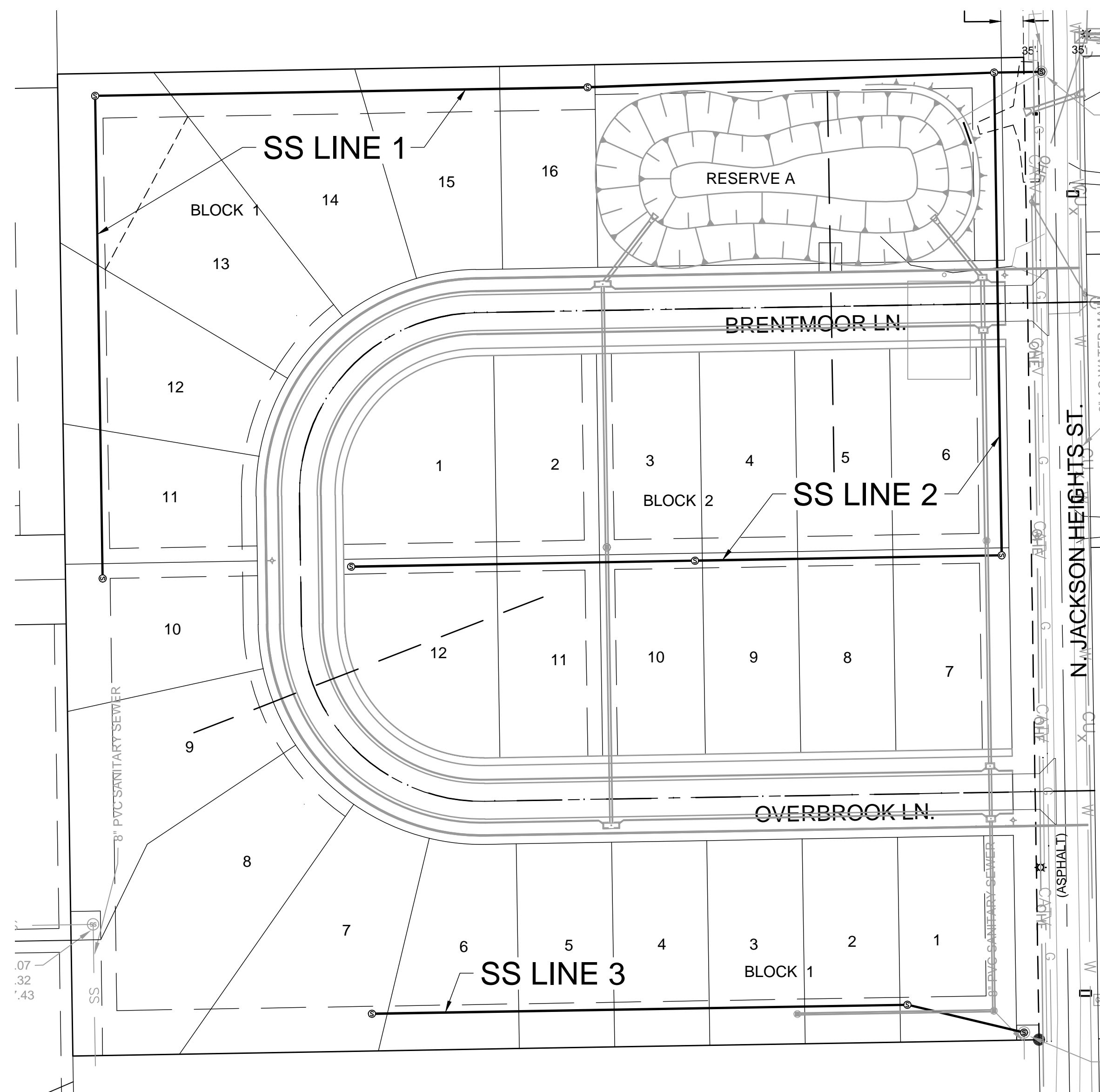
- The Contractor shall comply with all applicable safety regulations. All construction shall be completed following current City Standard Specifications and Special Provisions.
- Contractor will be required to provide notice to utility companies a minimum of seventy-two (72) hours prior to any excavation, as follows:  
  
Kansas One-Call 687-2470  
  
The Contractor must notify the following in case of an emergency:  
  
AT&T 1-800-246-8464  
Black Hills Energy 1-800-694-8989  
City of Wichita Water & Sewer Dept. 1-316-219-8921  
City of Wichita Stormwater 1-316-268-4090  
City of Wichita Traffic 1-316-268-4034  
Cox Communications 1-888-249-3530  
Energry 1-800-544-4857  
Kansas Gas Service 1-888-482-4950
- Utility service lines, poles, etc. are to be adjusted as necessary by others prior to construction unless the plans specifically call for their adjustment by the Contractor or unless the plans specifically identify a utility to be adjusted by its owner during construction. Existing utilities and their location, as shown on the plans, represent the best information obtainable for design. The Contractor will be required to work around existing utilities within the right-of-way which do not conflict with proposed construction.
- Rubble from the removal of miscellaneous structures and excess excavation which is to be wasted shall be disposed of on sites to be provided by the Contractor. These sites shall be approved by the Engineer as to suitability, appearance and site location. Locations, in the opinion of the Engineer, that will leave an unsightly appearance will not be approved. All disposal sites must be approved by the Kansas Department of Health and Environment. Material either stockpiled or disposed of in a flood plain will require a Kansas State Board of Agriculture permit. Any material dumped in waters of the United States or wetlands is subject to U.S. Corps. of Engineers permitting regulations. Any material buried or stockpiled beyond approved construction limits will require additional archaeological investigations unless buried in a previously approved borrow location.
- Trees and shrubs in public right-of-way which are in direct conflict with proposed new construction shall be removed by the Contractor with the Engineer's approval. Trees and shrubs which are not in direct conflict with proposed new construction shall be saved and protected from damage.
- The Contractor shall give all property owners and/or tenants of developed property abutting the construction of this project a minimum of ten (10) days notice prior to start of construction.
- The Contractor shall be responsible for preserving property irons. The Contractor will be required to re-establish any property irons which are damaged or destroyed by his construction operations. Such irons shall be re-established by a licensed land surveyor in accordance with state laws.
- If traffic will be impacted by construction, a traffic control plan must be submitted and approved by the City Traffic Engineer, at [traffic@wichita.gov](mailto:traffic@wichita.gov) before construction can begin. The Contractor shall be responsible for all traffic control measures to facilitate construction. All construction zone markings and signage shall conform to the latest version of the Manual on Uniform Traffic Control Devices (MUTCD) as published by the US Dept. of Transportation, Federal Highway Administration. All costs associated with construction markings and signage shall be the Contractors responsibly.
- All elevations shown are NAVD 88.
- All areas disturbed during construction that will not be under proposed pavement shall be restored to match existing conditions.
- The Contractor shall protect from damage and support existing utilities through constructions as approved by the utility owner and the Engineer at the contractors expense.

- Contractor shall limit the extent of trench openings overnight and weekends to less than 50 feet.
- All stubs and plugged pipes shall be located with green plastic tape in the same manner as risers.
- Connecting to Existing Manholes:  
  
Prior to laying sewer lines using existing stubs in existing manholes, the Contractor shall expose and verify the elevation, grade and alignment of existing stubs and notify the Engineer of any deviation from the plans. Where connection to an existing manhole that does not have an existing stub or the stub is unusable due to elevation grade or alignment, the Contractor shall bore cut into existing manhole wall to make connection using approved water stop gasket, and reshape the existing manhole invert to provide smooth flow. The cost to connecting to existing manholes is incidental to the project.
- Contractor shall provide positive drainage away from all manhole covers.
- The Contractor shall prevent any construction debris from entering the existing sanitary sewer during construction.
- The Contractor shall be responsible for maintaining continuous flow of sewage through construction. Contractors proposed method for maintaining sewage flow shall be submitted and approved by the Sewer Maintenance Division (316-268-4073) prior to starting and by-passing of sewage flows.
- Any over excavation from manhole and/or pipe removal shall be backfilled and compacted in accordance with the Standard Specifications.
- Excess dirt generated from installation of underground utilities is to remain on site and be stockpiled on Lots 11-12, Block 2.
- Since the water and sanitary sewer projects are tied for bidding and share the same benefit district, the cost for "Site Clearing", "Site Restoration", "Traffic Control" and "Maintain Existing BMPs" shall be paid for by the bid items established for that work in the Sanitary Sewer Project.

## Benchmarks

BENCHMARK: CHISELED SQUARE ON THE TOP OF CURB ON THE EAST SIDE OF THE PRIVATE DRIVE ON THE NORTH CURB RETURN OF THE ENTRANCE TO 12221 E. CENTRAL AVE., ELEVATION = 1348.28 (NAVD88, G12B)

BENCHMARK: CHISELED SQUARE ON THE TOP OF CURB ON THE SOUTH SIDE OF TAMARAC LN., 26 FEET NORTHEAST OF THE EAST DRIVEWAY EDGE OF 12031 E. TAMARAC LN., ELEVATION = 1357.42 (NAVD88, G12B)



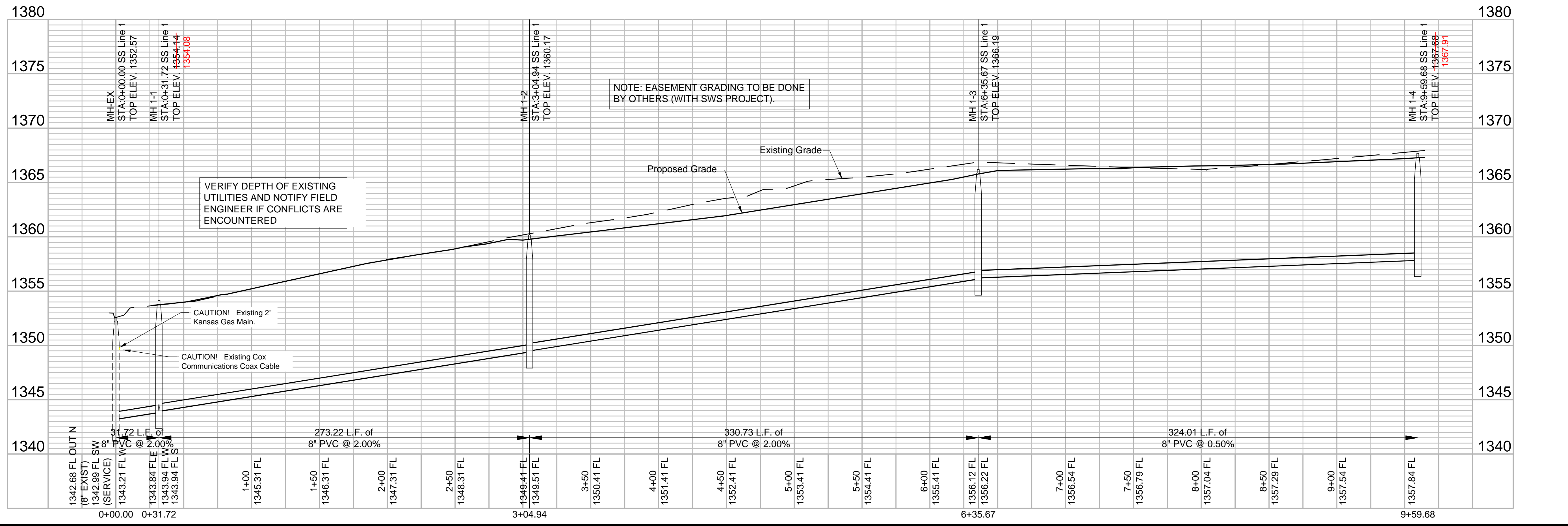
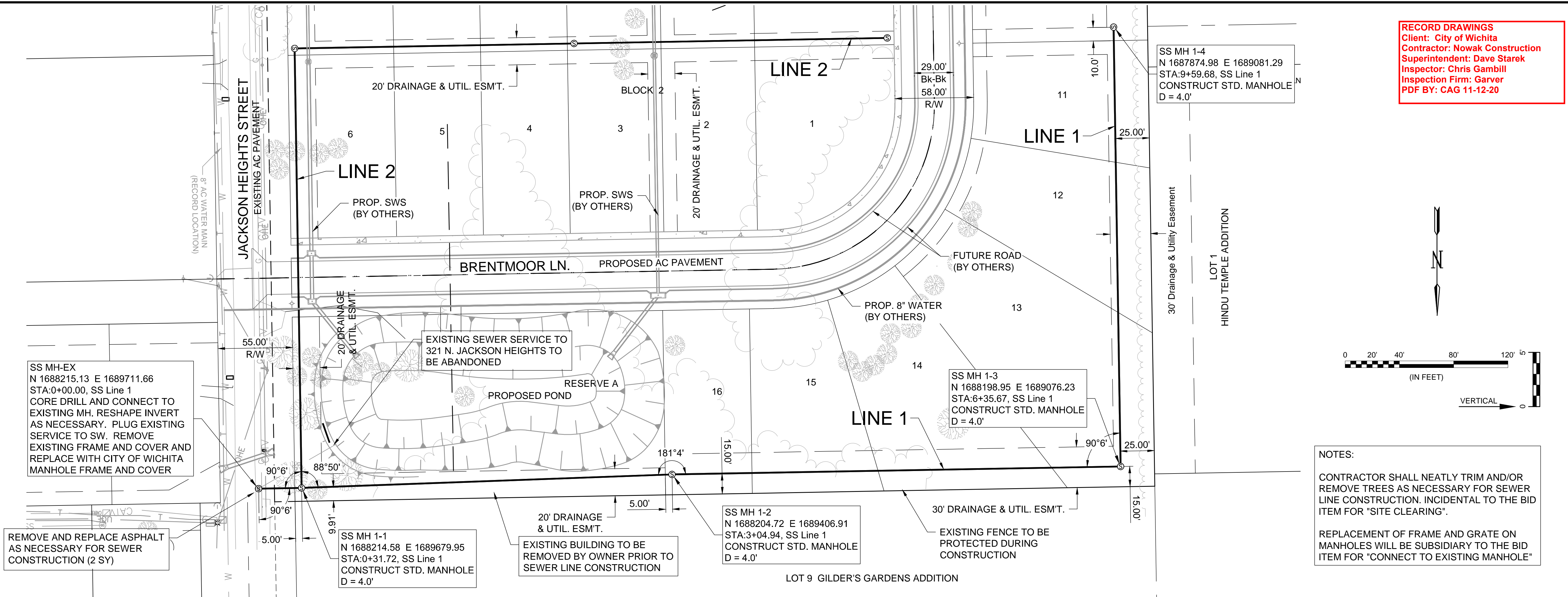
IMPROVEMENT DISTRICT

PLAN SET REVIEWED BY GARVER  
*Chunhua Bolin* 6/8/2020  
SIGNATURE DATE

NOTE: All coordinates listed are modified NAD83 Kansas State Plane Zone South unless otherwise noted. To convert listed coordinates to NAD83 Kansas State Plane Zone South coordinates multiply the northing and easting by the project scale factor of 0.99988306. Elevation datum is NAVD88 Geoid 12B unless otherwise noted.



File: L:\2020\20T41000 - Jackson Heights Phase 1\Drawings\C3D\SS Sheets\SS Line 1 (1 of 2).dwg Last Save: 8/14/2020 8:41 AM Last saved by: KWLee  
 Last plotted by: Lee, Ken W. Plot Style: .... Plot Scale: 1:2,565 Plot Date: 8/17/2020 5:03 PM Plotter used: None



© 2020 GARVER, LLC  
 THIS DOCUMENT, ALONG WITH THE IDEAS AND DESIGNS CONVEYED HEREIN, SHALL BE CONSIDERED INSTRUMENTS OF PROFESSIONAL SERVICE AND ARE PROPERTY OF GARVER, LLC. ANY USE, REPRODUCTION, OR DISTRIBUTION OF THIS DOCUMENT, ALONG WITH THE IDEAS AND DESIGN CONTAINED HEREIN, IS PROHIBITED UNLESS AUTHORIZED IN WRITING BY GARVER, LLC OR EXPLICITLY ALLOWED IN THE GOVERNING PROFESSIONAL SERVICES AGREEMENT FOR THIS WORK.

8535 E. 21st Street N.  
 Suite 130  
 Wichita, KS 67206  
 (316) 264-8008

REV.	DATE	DESCRIPTION	BY

CITY OF WICHITA  
 WICHITA, KANSAS

JACKSON HEIGHTS  
 ADDITION  
 SANITARY SEWER

**SS LINE 1**

JOB NO.: 20T41000  
 DATE: AUGUST 2020  
 DESIGNED BY: KWL  
 DRAWN BY: DRS

BAR IS ONE INCH ON ORIGINAL DRAWING  
 IF NOT ONE INCH ON THIS SHEET, ADJUST SCALES ACCORDINGLY.

DRAWING NUMBER

SHEET NUMBER **2** OF **16**



