

GENERAL NOTES:

1. Contractor will be required to provide notice to utility companies a minimum of seventy-two (72) hours prior to any excavation, as follows:

Kansas One-Call 687-2470

The Contractor must notify the following in case of an emergency:

- Cox Communications 262-4270
- Kansas Gas Service 1-888-482-4950
- Westar Energy 383-8650
- Aquila Energy 1-800-303-0357
- AT&T 268-2245
- City of Wichita Water Dept. 268-4563
- City of Wichita Sewer Maint. 268-4024
- City of Wichita Storm Sewer Maint. 268-4090
- City of Wichita Traffic Maint. 268-4034
- Conoco Phillips Pipeline Co. 1-877-267-2290
- Southern Star Pipeline Co. 529-6600
- Kinder-Morgan Pipeline Co. 1-888-844-5658

2. Utility service lines, poles, valve boxes, meters, and etcetera are to be adjusted as necessary by others prior to construction unless the plans specifically call for their adjustment by the Contractor or unless the plans specifically identify a utility to be adjusted by its owner during construction. Existing utilities and their location, as shown on the plans, represent the best information obtainable for design. The Contractor will be required to work around existing utilities within the right-of-way which do not conflict with proposed construction.

3. Rubble from the removal of miscellaneous structures and excess excavation which is to be wasted shall be disposed of on sites to be provided by the Contractor. These sites shall be approved by the Engineer as to suitability, appearance and site location. Locations, in the opinion of the Engineer, that will leave an unsightly appearance will not be approved. All disposal sites must be approved by the Kansas Department of Health and Environment. Material either stockpiled or disposed of in a flood plain would require a Kansas State Board of Agriculture permit. Any material dumped in waters of the United States or wetlands is subject to U.S. Corps of Engineers permitting regulations. Any material buried or stockpiled beyond approved construction limits would require additional archaeological investigations unless buried in a previously approved borrow location.

4. Trees and shrubs in public right-of-way which are in direct conflict with proposed new construction shall be removed by the Contractor with the Engineer's approval. Trees and shrubs which are not in direct conflict with proposed new construction shall be saved and protected from damage.

5. The Contractor shall give all property owners and/or tenants of developed property abutting the construction of this project a minimum of ten (10) days notice prior to start of construction.

6. The Contractor shall be responsible for preserving property irons. The Contractor will be required to re-establish any property irons which are damaged or destroyed by his construction operations. Such irons shall be re-established by a licensed land surveyor in accordance with state laws.

7. All existing and proposed erosion control measures including silt fencing, erosion control mat, straw bales, inlet barriers, and const. entrance shall be maintained throughout construction by the contractor until project is accepted by the City of Wichita. The on-site engineer shall complete weekly reports on the status of erosion control measures. The contractor shall be required to comply with maintenance and/or replacement of erosion control measures as determined by the on-site engineer until project is accepted by City of Wichita. Maintenance and/or replacement of erosion control measures to be paid by measured quantity of each BMP item.

8. All excess excavation shall remain on-site and shall be stockpiled or spread at a location determined by the engineer.

9. The Contractor shall be responsible for maintaining continuous flow of sewage through construction. Contractor's proposed method for maintaining sewage flow shall be approved by the Engineer. Cost of maintaining flow of sewage through construction will not be paid for directly and this cost shall be considered as subsidiary to the other pay items of work.

10. All areas within Ellison Ave. Right-of-Way disturbed during construction shall be seeded as follows:

SEED -- Kansas Premium Fescue Blend; 8#/1000 Sq. Ft.
Rye grass (PLS); 3#/1000 Sq. Ft. and
FERTILIZER -- 12-24-12 Ratio at 350 Lbs./Ac.
MULCH -- 2 Tons Prairie Hay / Acre - where E.C. Mat not specified.

All other disturbed areas not in street R/W are to be seeded as follows:

SEED -- Rye grass (PLS)--5#/1000 Sq. Ft.

All costs associated with seeding shall be included in bid item "Seeding". All seeding operations shall conform to City of Wichita Standard Specifications.

An additional bid item for "Seeding, Temporary" has been included and may be used at the discretion of the Design Engineer. Temporary seed shall be Annual Rye at of 5 Lbs./1000 Sq. Ft. unless otherwise noted and shall be planted when permanent seed or sod cannot be used due to seasonal limitations.

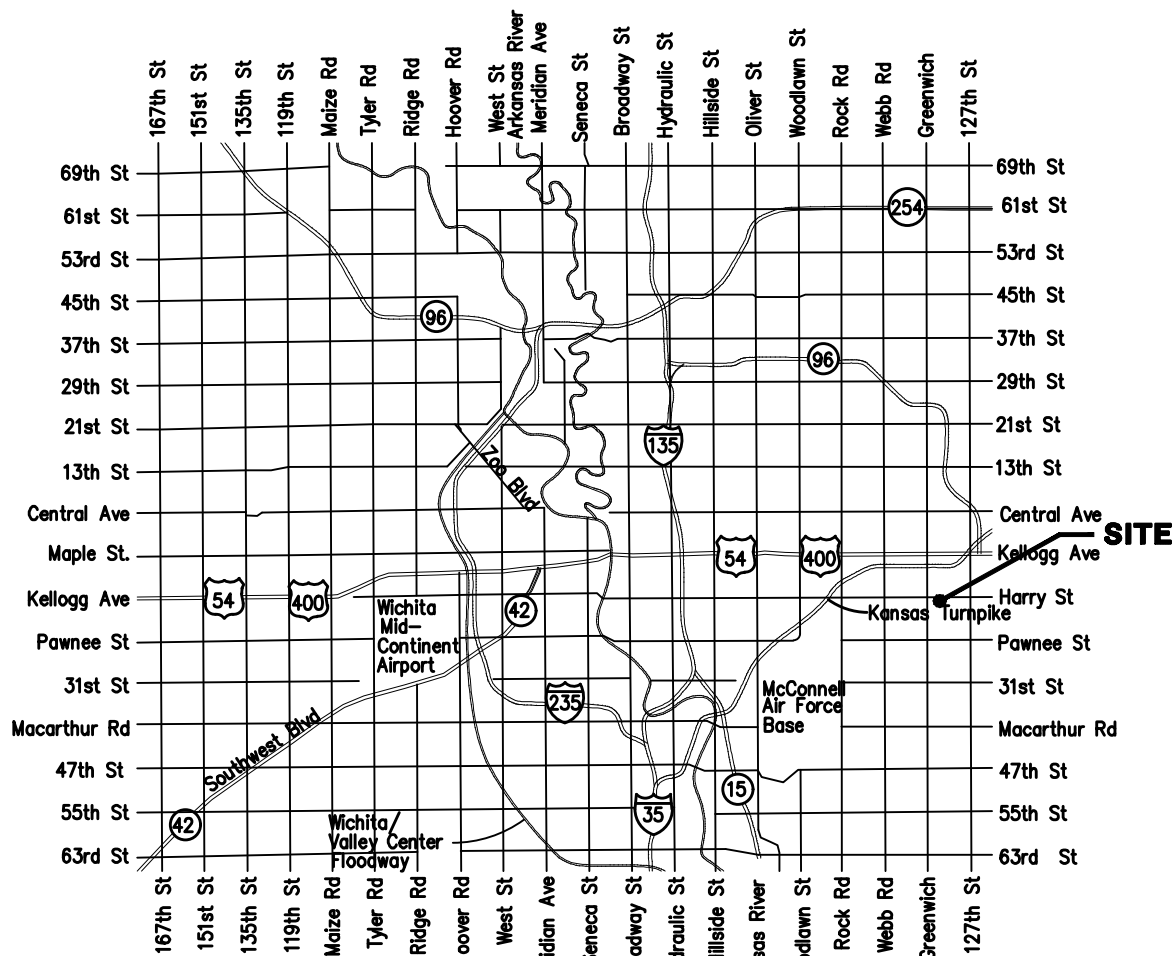
11. Trees and shrubs in the work area which are in direct conflict with proposed new construction shall be removed by the Contractor ONLY with the Developer or Baughman Company approval. Trees and shrubs which are not in direct conflict with proposed new construction shall be saved and protected from damage. If trimming is necessary, a chainsaw shall be used. Breaking limbs with equipment will not be allowed. An on-site pre-construction meeting will occur prior to any construction to discuss tree removal, tree protection, and tree trimming.

12. The Developer for this project is Nick Cowgill
10333 E 21st St. N., Wichita, KS 67206
PH# (316) 684-0161
email nick.cowgill@nieshomes.com

BENCHMARKS

CHISELED "□", TOP OF CURB INLET, NW COR. OF CURB INLET, 77.8' W. & 16.1' N. OF NW COR., E1/2, NW1/4, SEC. 34, TWP. 27-S, R-2-E.
ELEV. = 1332.09 NAVD88

CHISELED "□", TOP OF CURB INLET, NW COR. OF CURB INLET, 272.1' E. & 16.1' N. OF NW COR., E1/2, NW1/4, SEC. 34, TWP. 27-S, R-2-E.
ELEV. = 1329.53 NAVD88

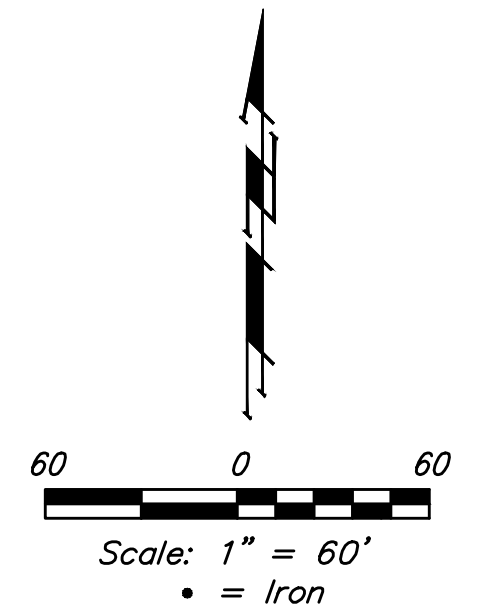


VICINITY MAP

SANITARY SEWER IMPROVEMENTS to serve WILLOW CREEK EAST 4TH ADDITION CITY OF WICHITA, KANSAS

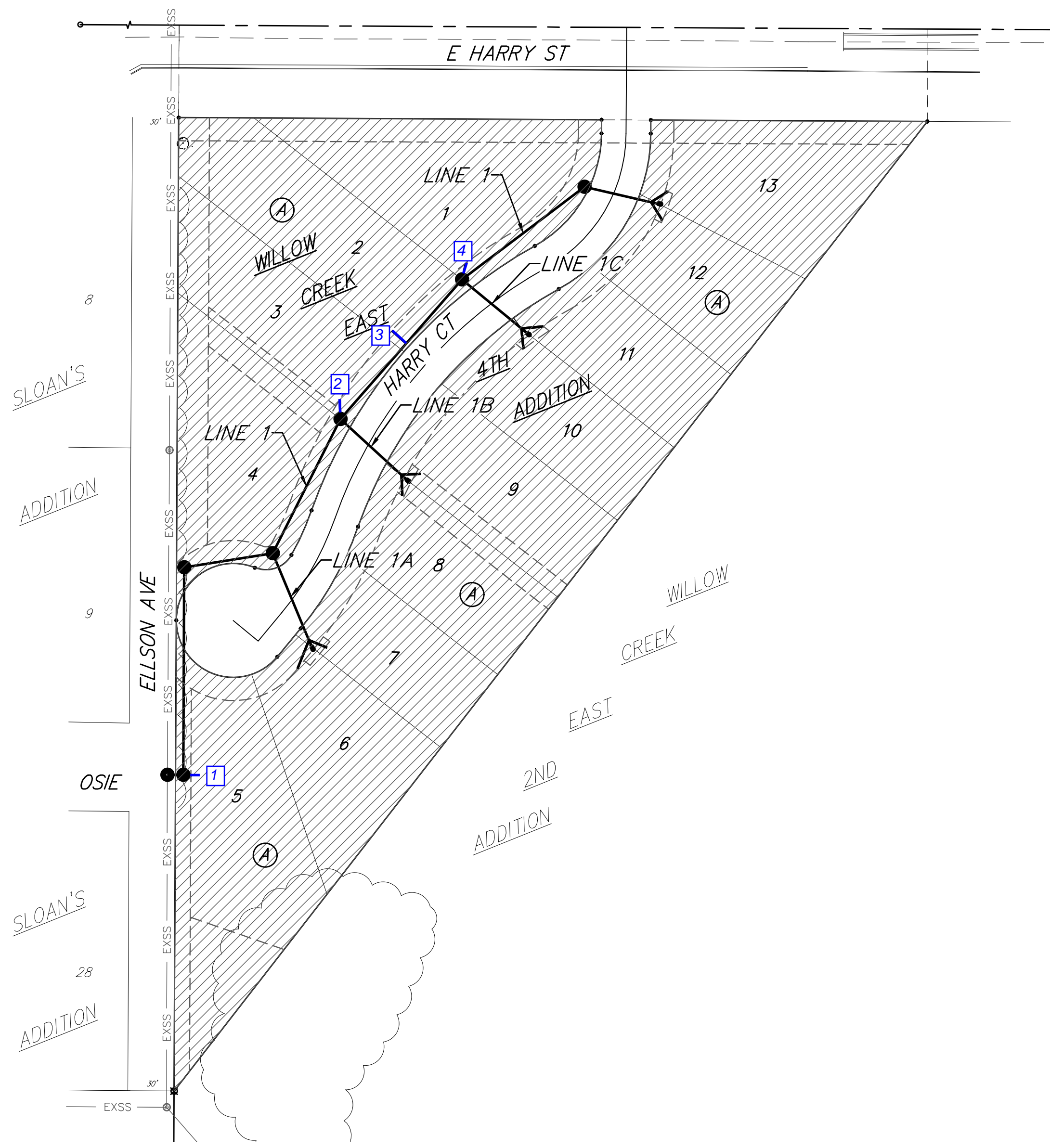
Gary Janzen, P.E. City Engineer
Project Number ~~468-2020-01299~~ 468-2020-012799
OCA Number 810051

Apex Construction - Contractor
K. Yale - City of Wichita, Field Project Engineer
F. Smith - Baughman, Inspector
As-built
Stubs & Risers
Release Date (for connection purposes only): 3/01/2021
Completion Date: 5/26/2021
pdf: 2/4/2021 apr

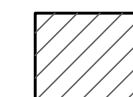


SHEET INDEX

Title Sheet	1
Line 1	2
Line 1A, 1B, & 1C	3
Erosion Control Plan	4
Erosion Control BMP Details	5-9
Standard Manhole Detail	10
Ring & Cover Detail	11
Vertical Riser Detail	12
Cleanout Detail	13
Coordinate Sheet	14
Copy of Plat	15



BENEFIT DISTRICT



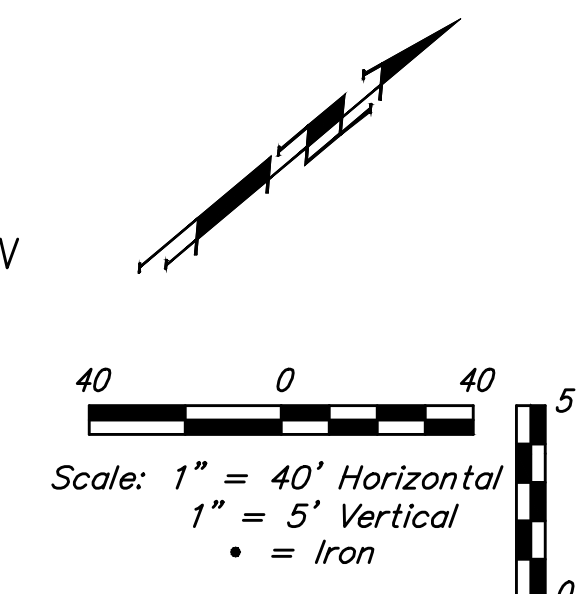
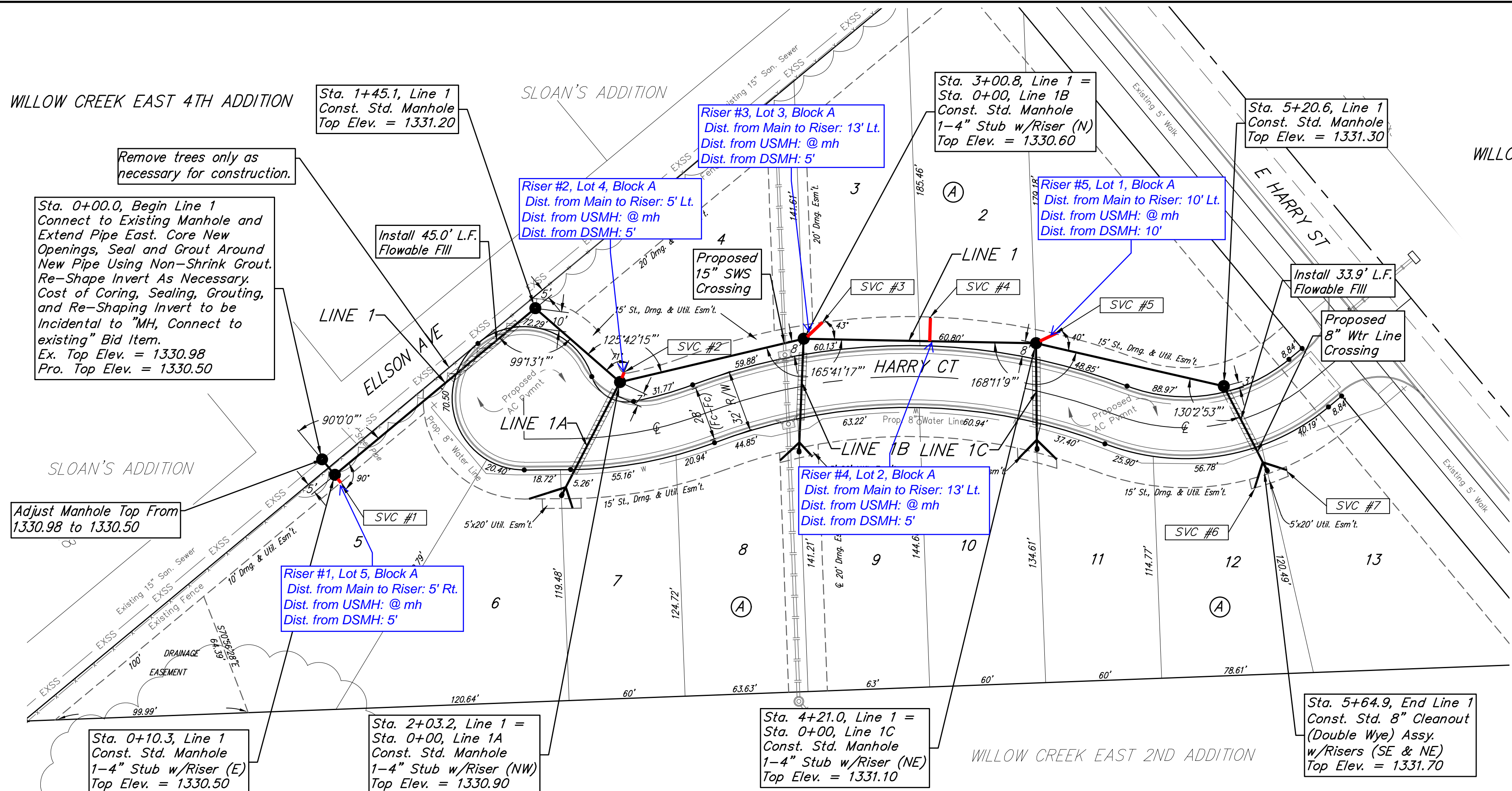
Baughman Company, P.A. 315 Ellis St. Wichita, KS 67211 P 316.262.7271 F 316.262.0148
ENGINEERING | SURVEYING | PLANNING | LANDSCAPE ARCHITECTURE

BENCHMARKS:
 CHISELED "□", TOP OF CURB INLET, NW COR.
 OF CURB INLET, 77.8' W. & 16.1' N. OF NW
 COR., E1/2, NW1/4, SEC. 34, TWP. 27-S,
 R-2-E.
 ELEV. = 1332.09 NAVD88

CHISELED "□", TOP OF CURB INLET, NW COR.
 OF CURB INLET, 272.1' E. & 16.1' N. OF NW
 COR., E1/2, NW1/4, SEC. 34, TWP. 27-S,
 R-2-E.
 ELEV. = 1329.53 NAVD88

WILLOW CREEK EAST 4TH ADDITION

WILLOW CREEK EAST 4TH ADDITION



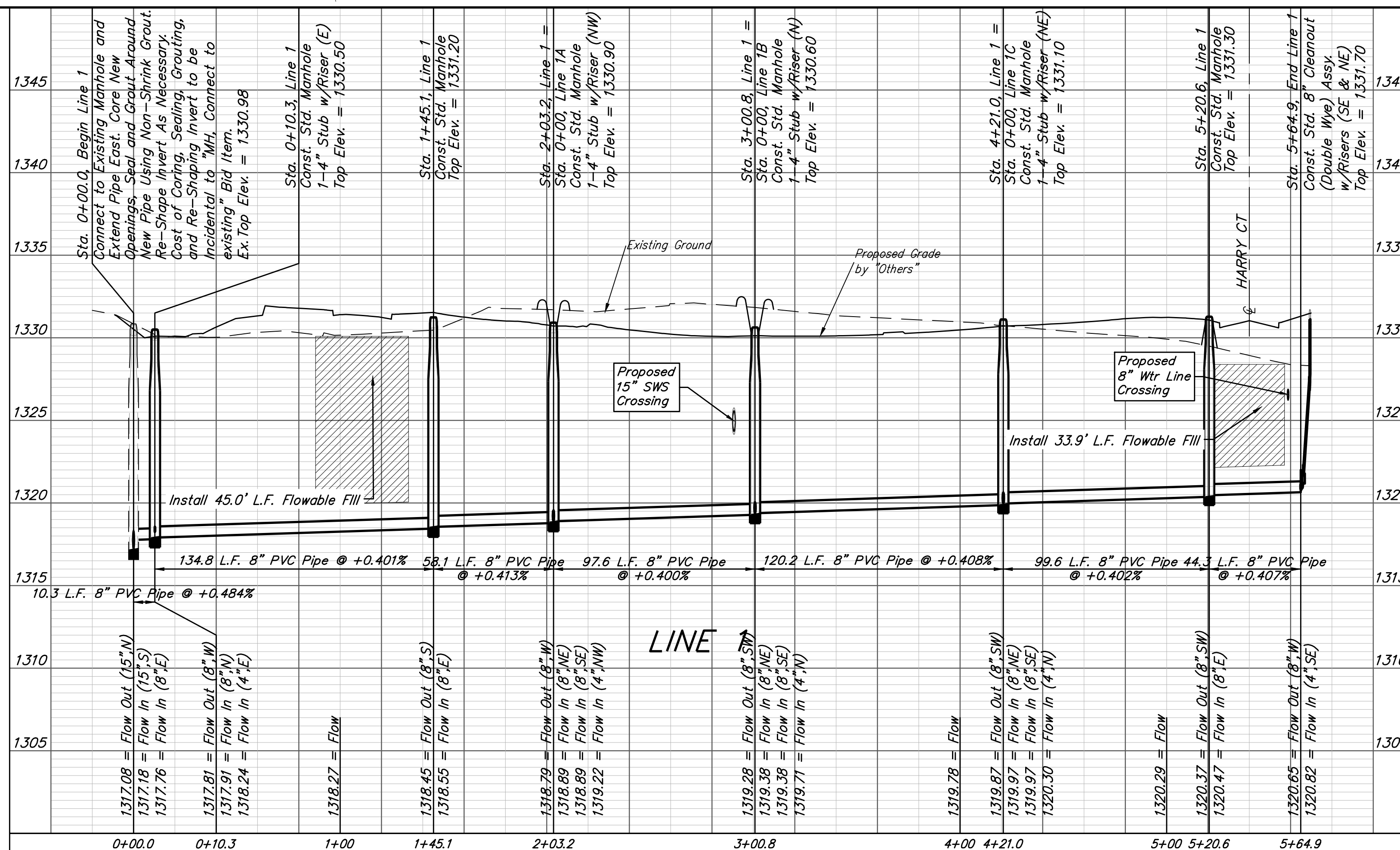
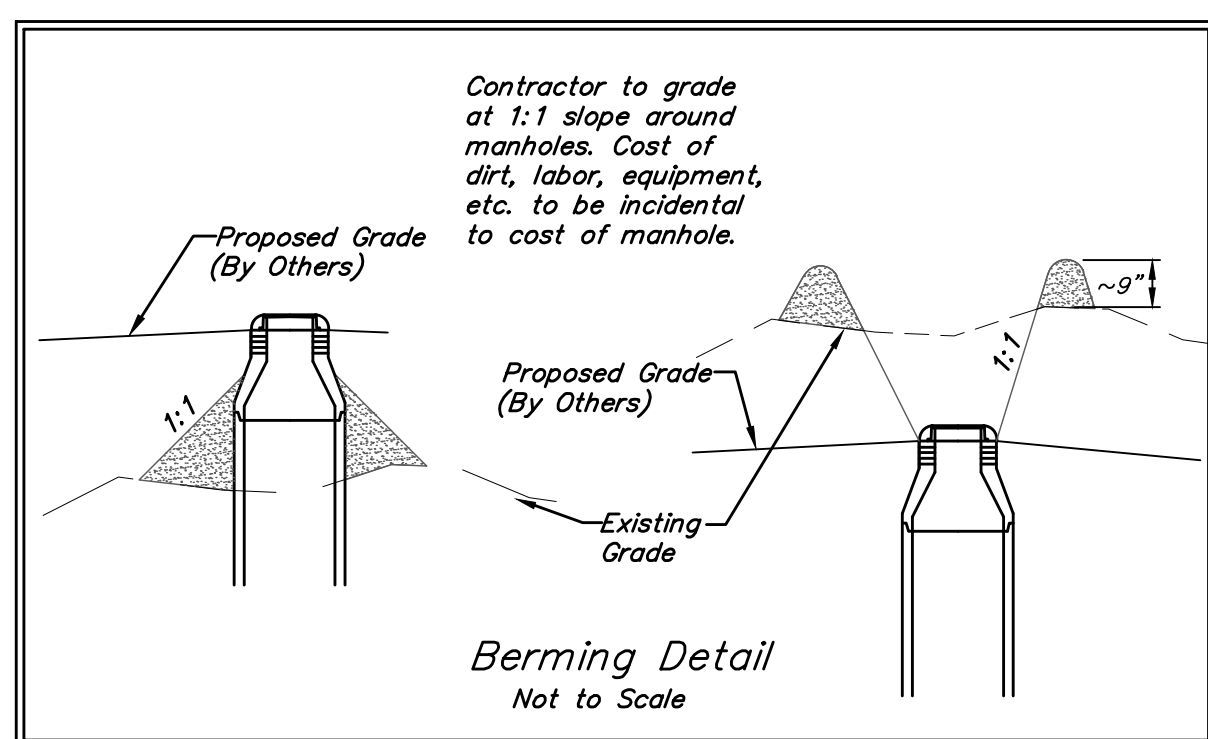
NOTE: Maintain 10 ft. of horizontal separation (outside dimension to outside dimension) between the water lines and sanitary sewer lines/structures.

All trench and manhole excavation areas from Sta. 1+45.1 to Sta. 5+20.6, Line 1 shall be backfilled with sand. The sand backfill shall be water-jetted and vibrated during backfilling. All costs shall be paid for as L.F. "Fill, Sand (Flushed & Vibrated)".

Existing trees which are in direct conflict with proposed new construction shall be removed by the Contractor ONLY with approval of the Engineer. Trees not in direct conflict with proposed new construction shall remain and be protected from damage. Cost shall be included in bid item "Site Clearing"

NUMBER	TYPE	LOCATION				FOR INFORMATION ONLY	
		LOT NO.	BLOCK NO.	LINE NO.	STATION / DIRECTION	APPROXIMATE LENGTH 4" PIPE	
1	4" Stub	5	A	1	0+10.3/Rt.	6.9'	5'
2	4" Stub	4	A	1	2+03.2/Lt.	6.5'	5'
3	4" Stub	3	A	1	3+00.8/Lt.	5.7'	13'
4	8" X 4" Tee	2	A	1	3+66.09, Lt.	6.2'	13'
5	4" Stub	1	A	1	4+21.0/Lt.	5.6'	11'
6	Cleanout	12	A	1	5+64.9/Rt.	5.8'	14'
7	Cleanout	13	A	1	5+64.9/Lt.	5.6'	13'

NOTE: Vertical Riser Pipe shall be extended to 2' minimum above ground water elevation and 4' maximum below proposed ground elevation.



APPROVED
 9/14/20

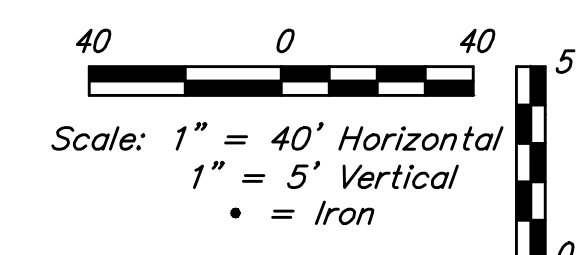
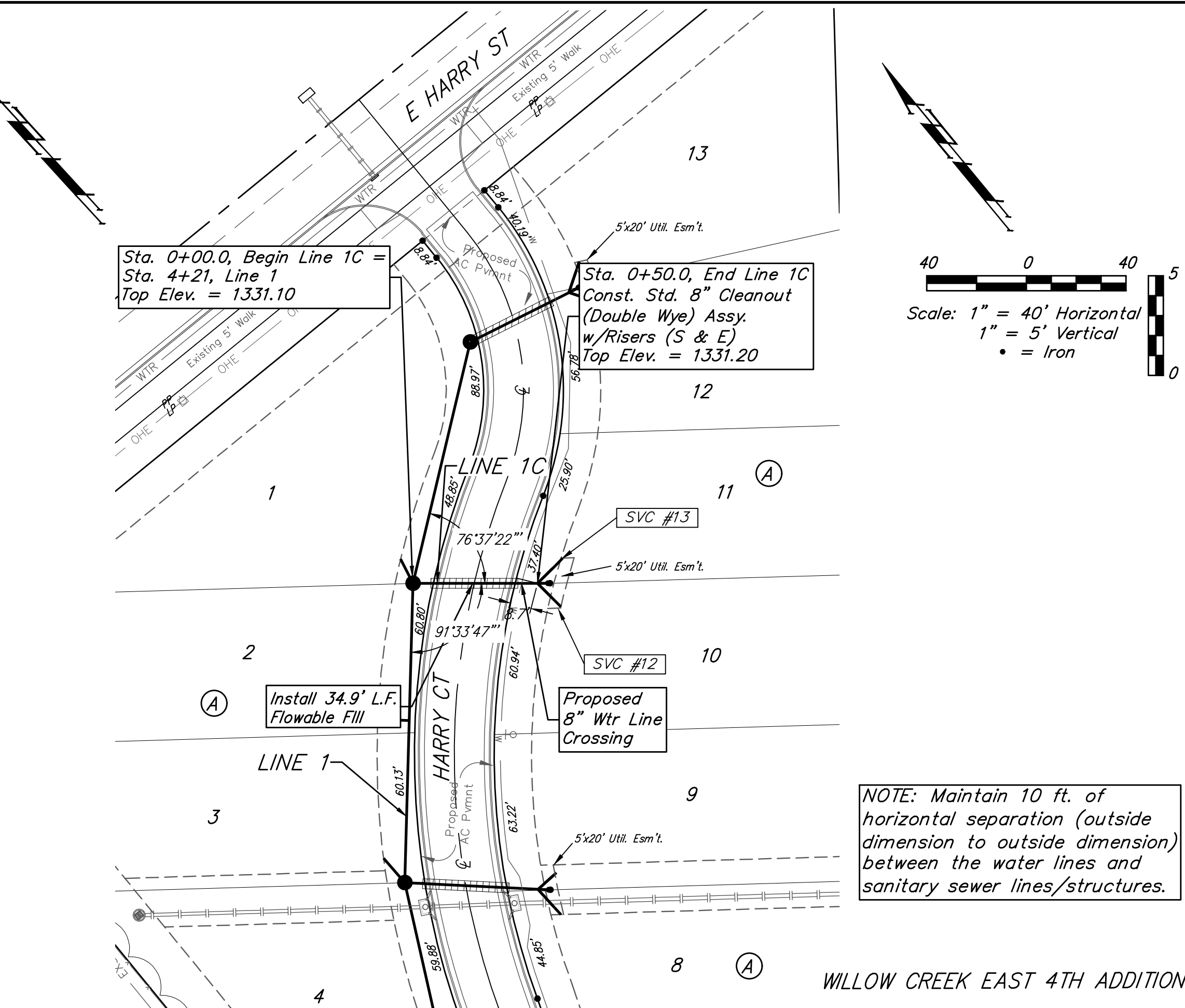
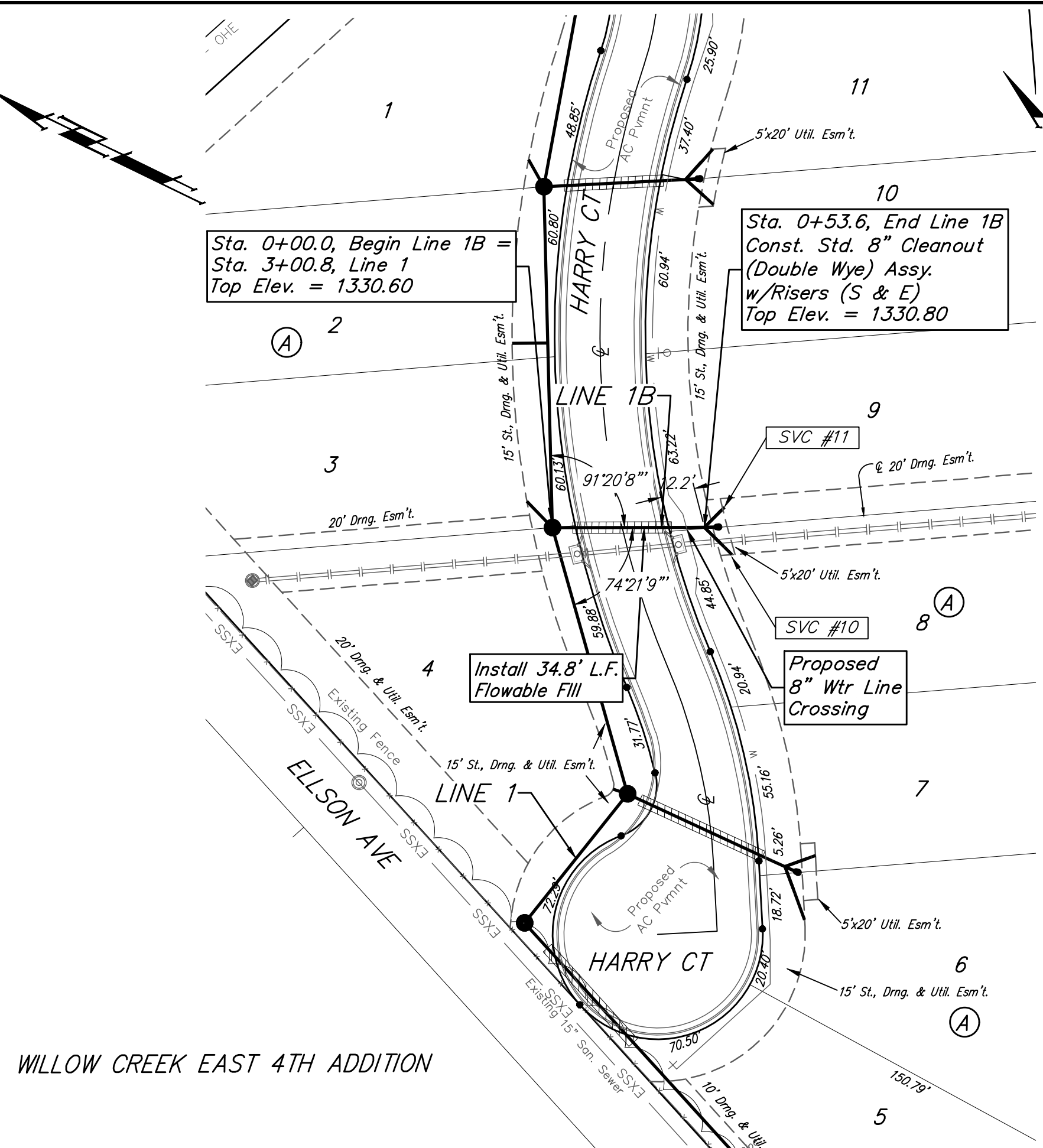
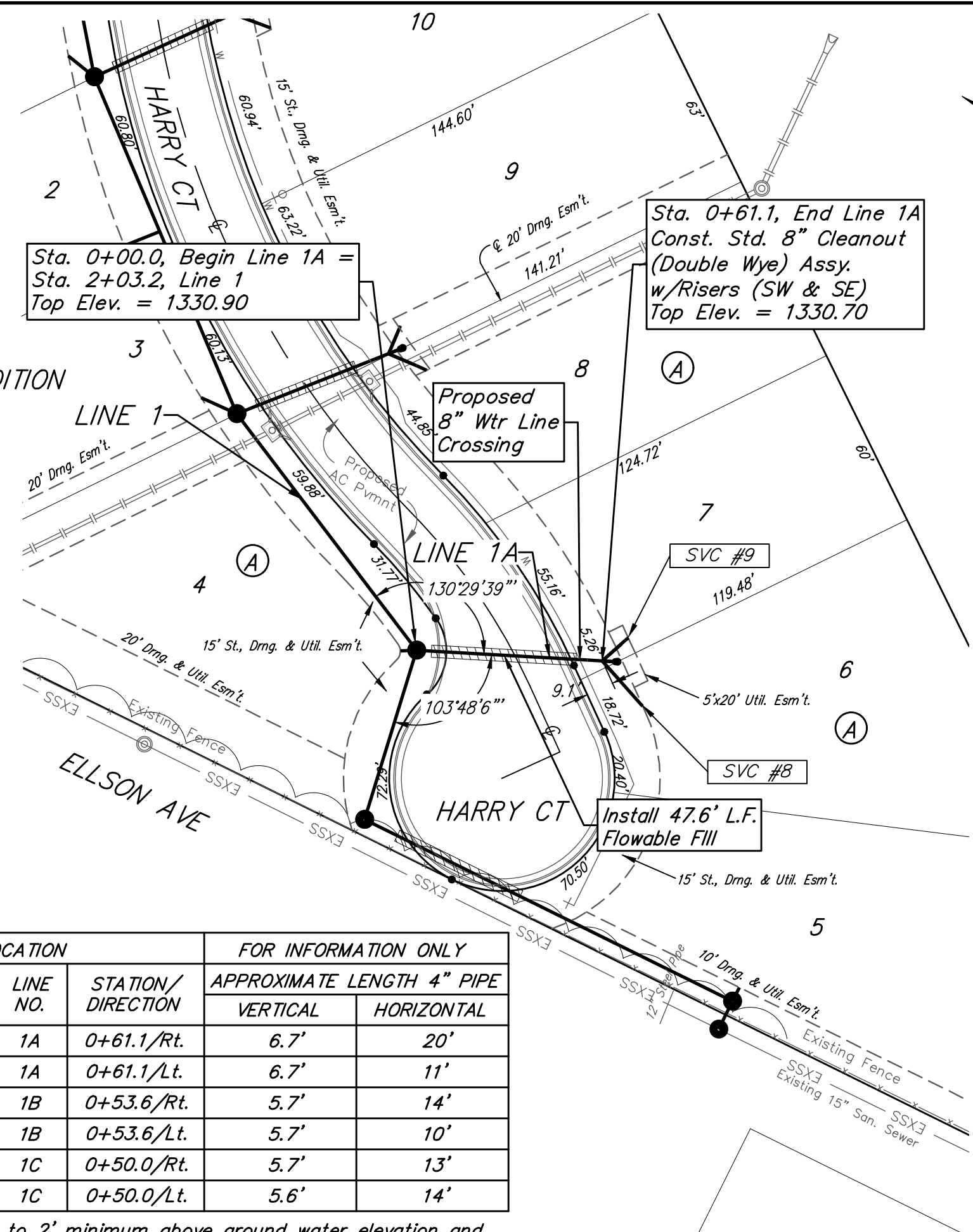
Baughman Willow Creek East 4th Addition
LINE 1
 Sanitary Sewer Improvements

Baughman Company, P.A. 315 Ellis St. Wichita, KS 67211 P 316-262-7271 F 316-262-0149
 ENGINEERING | SURVEYING | PLANNING | LANDSCAPE ARCHITECTURE

PROJECT NUMBER: 468-2020-01299 DESIGN: AEG DRAWN: HWJ
 APPROVED: DATE: 09/14/20
 REVISIONS: SCALE: Noted SHEET: 2 OF 15

BENCHMARKS:
 CHISELED "□", TOP OF CURB INLET, NW COR.
 OF CURB INLET, 77.8' W. & 16.1' N. OF NW
 COR., E1/2, NW1/4, SEC. 34, TWP. 27-S,
 R-2-E.
 ELEV. = 1332.09 NAVD88

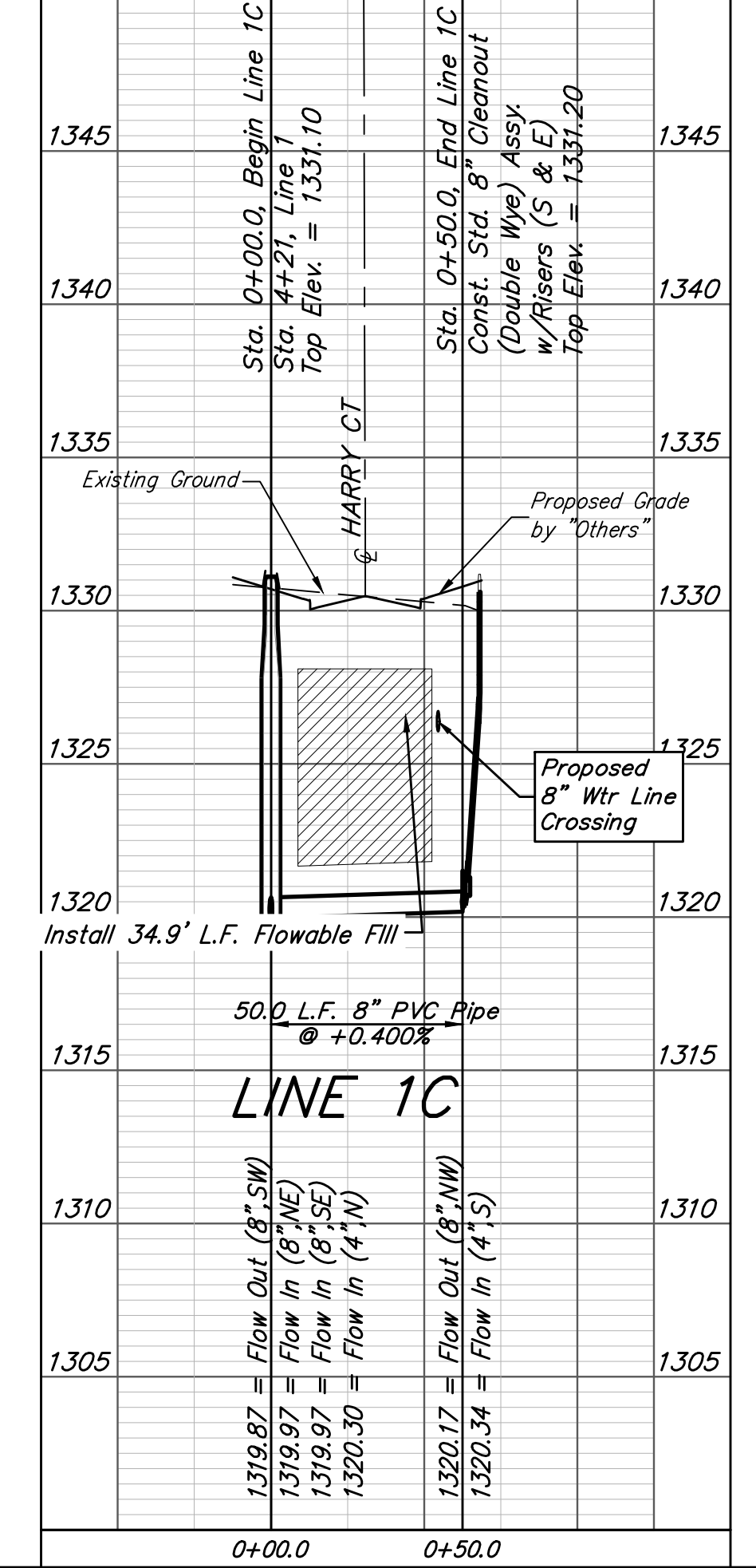
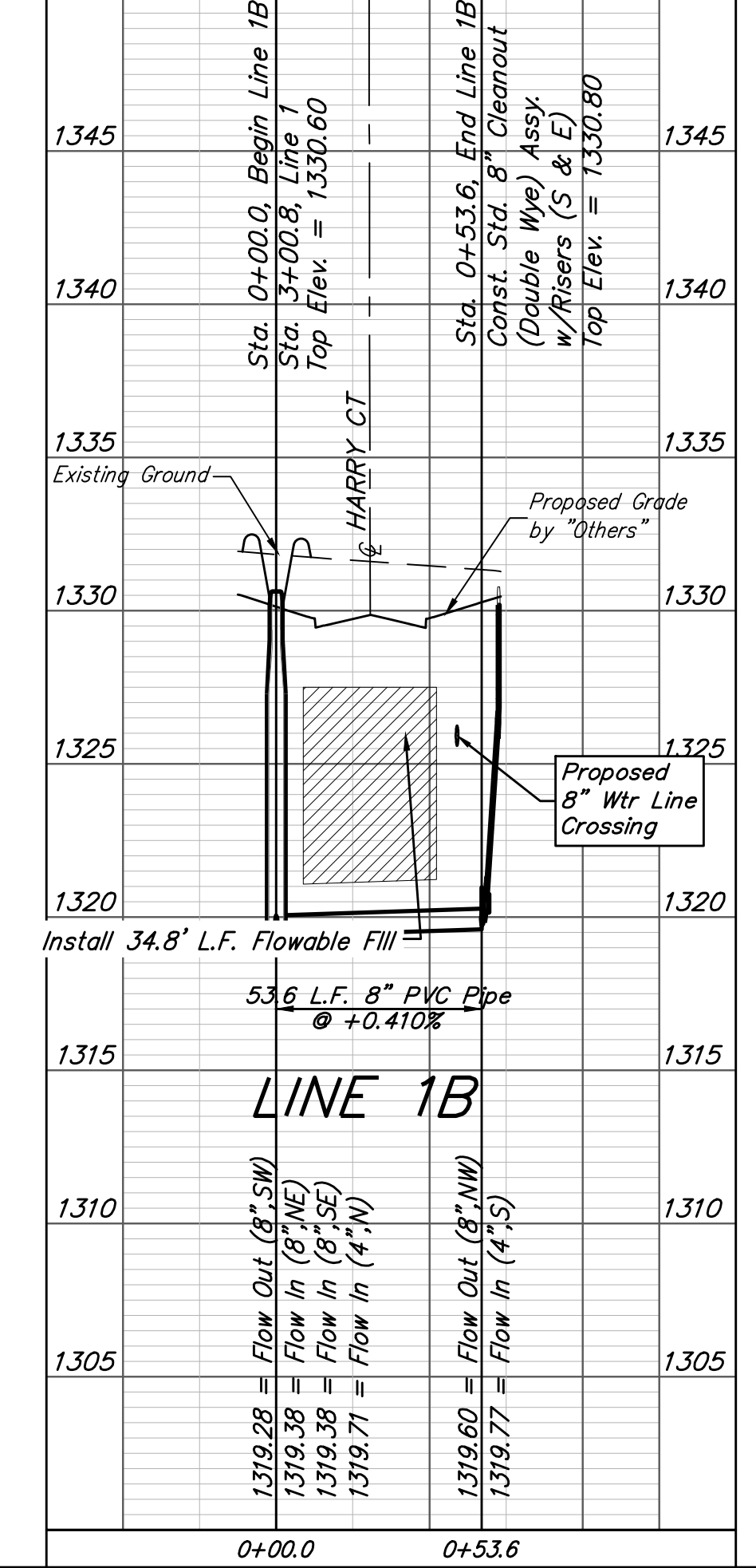
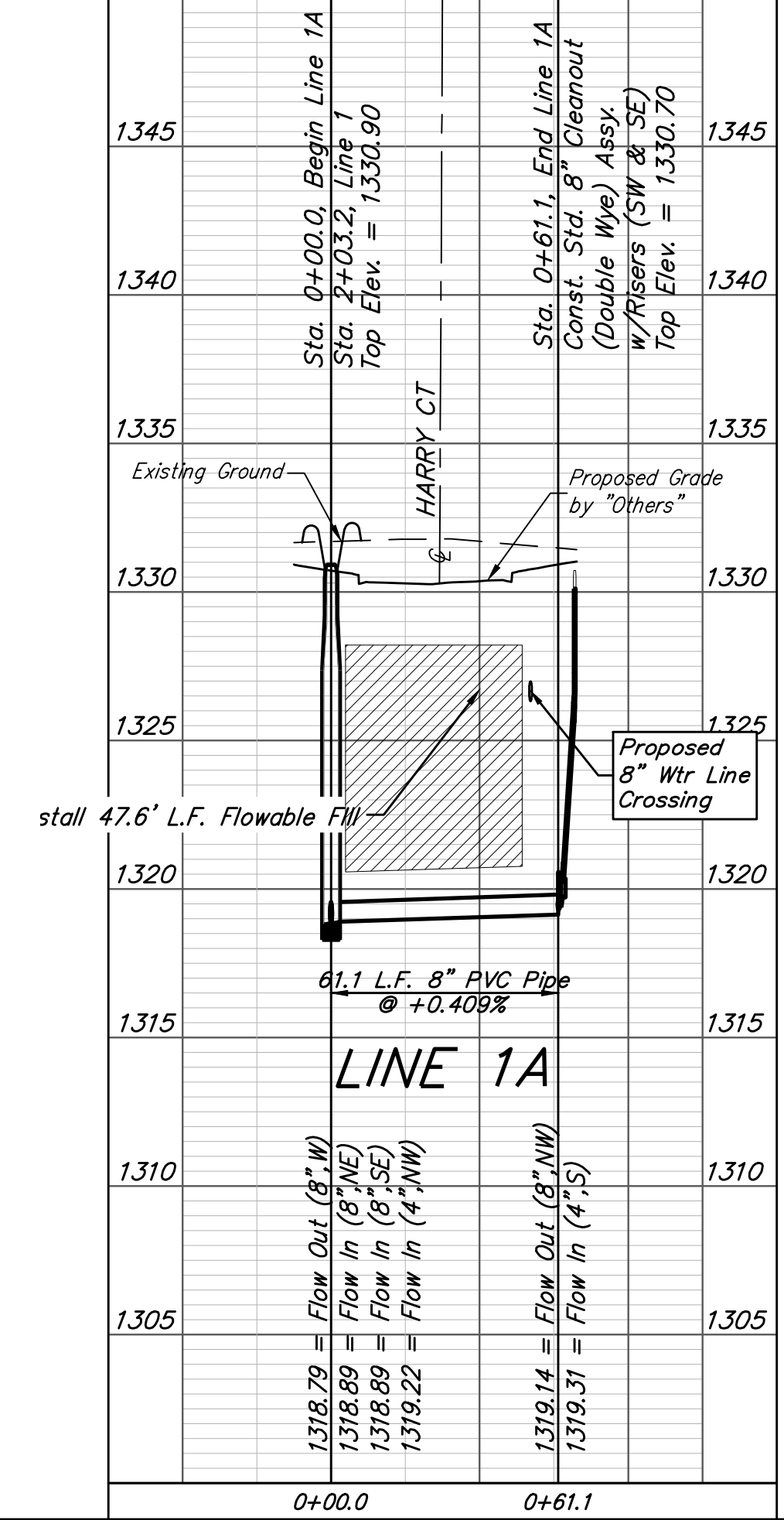
CHISELED "□", TOP OF CURB INLET, NW COR.
 OF CURB INLET, 272.1' E. & 16.1' N. OF NW
 COR., E1/2, NW1/4, SEC. 34, TWP. 27-S,
 R-2-E.
 ELEV. = 1329.53 NAVD88



NOTE: Maintain 10 ft. of horizontal separation (outside dimension) between the water lines and sanitary sewer lines/structures.

NUMBER	TYPE	LOCATION				FOR INFORMATION ONLY	
		LOT NO.	BLOCK NO.	LINE NO.	STATION/DIRECTION	APPROXIMATE LENGTH 4" PIPE VERTICAL	HORIZONTAL
8	Cleanout	6	A	1A	0+61.1/Rt.	6.7'	20'
9	Cleanout	7	A	1A	0+61.1/Lt.	6.7'	11'
10	Cleanout	8	A	1B	0+53.6/Rt.	5.7'	14'
11	Cleanout	9	A	1B	0+53.6/Lt.	5.7'	10'
12	Cleanout	10	A	1C	0+50.0/Rt.	5.7'	13'
13	Cleanout	11	A	1C	0+50.0/Lt.	5.6'	14'

NOTE: Vertical Riser Pipe shall be extended to 2' minimum above ground water elevation and 4' maximum below proposed ground elevation.



Baughman Willow Creek East 4th Addition
LINE 1A, 1B, & 1C
 Sanitary Sewer Improvements

Baughman Company, P.A. 315 Ellis St. Wichita, KS 67211 P 316-262-7271 F 316-262-0149
 ENGINEERING | SURVEYING | PLANNING | LANDSCAPE ARCHITECTURE

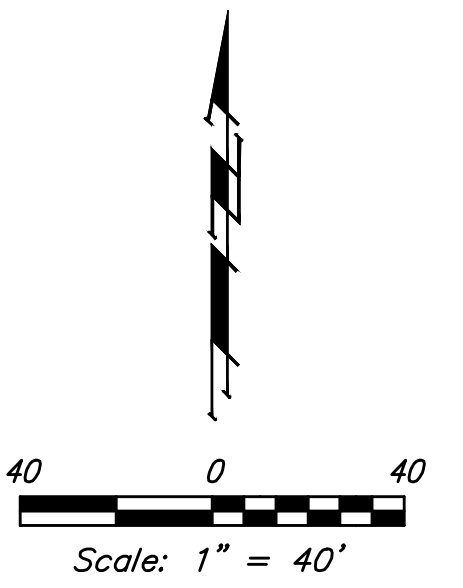
PROJECT NUMBER: 468-2020-01299
 DESIGN: AEG
 DRAWN: HWJ
 APPROVED: [Signature]
 DATE: 09/14/20

REVISIONS:

SCALE: Noted
 SHEET: **3 OF 15**

BENCHMARKS:
 CHISELED "□", TOP OF CURB INLET, NW COR.
 OF CURB INLET, 77.8' W. & 16.1' N. OF NW
 COR., E1/2, NW1/4, SEC. 34, TWP. 27-S,
 R-2-E.
 ELEV. = 1332.09 NAVD88

CHISELED "□", TOP OF CURB INLET, NW COR.
 OF CURB INLET, 272.1' E. & 16.1' N. OF NW
 COR., E1/2, NW1/4, SEC. 34, TWP. 27-S,
 R-2-E.
 ELEV. = 1329.53 NAVD88



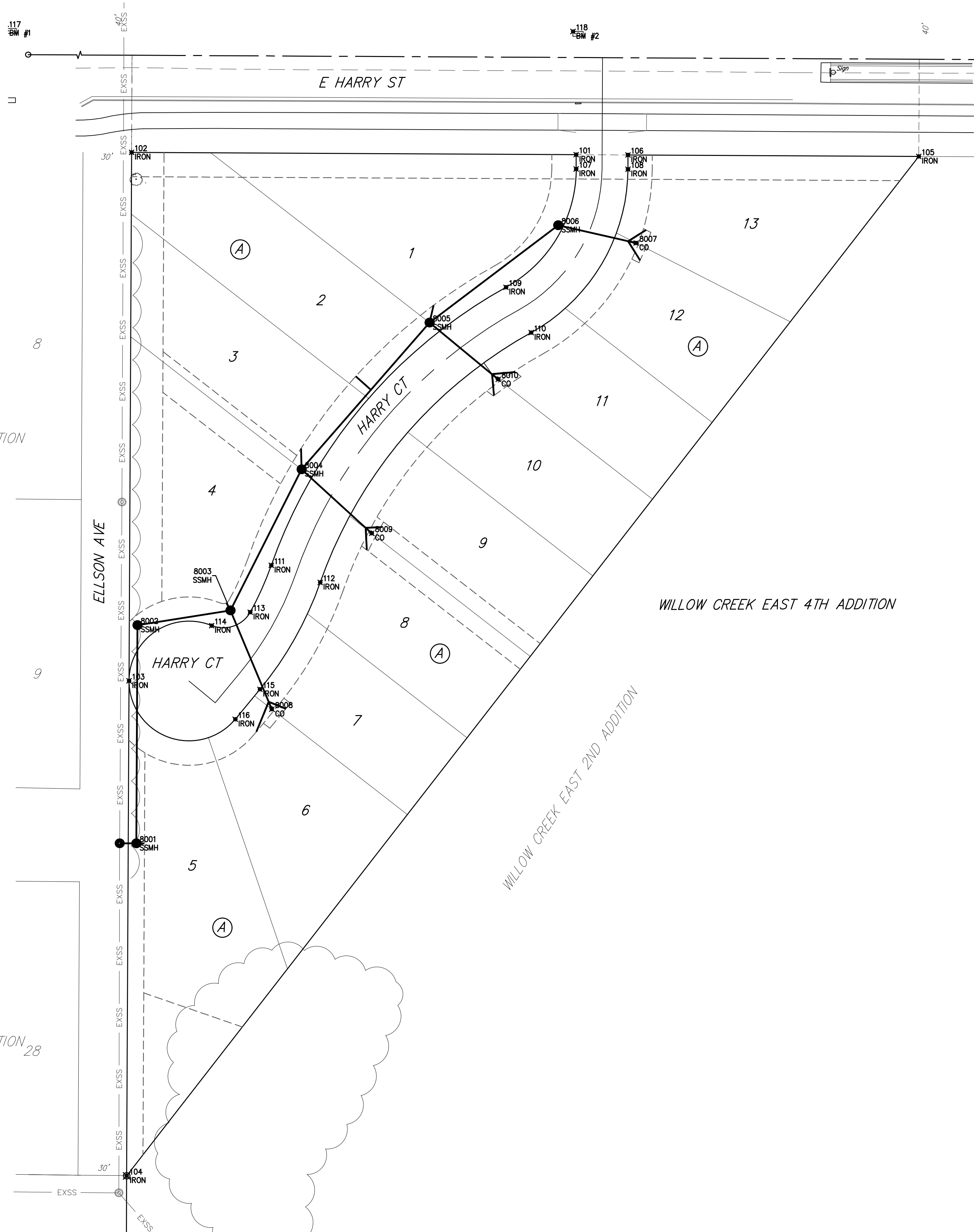
WILLOW CREEK EAST 4TH ADDITION


SS POINTS			
Point #	Northing	Easting	Description
8001	1,677,847.72	1,687,670.09	SSMH
8002	1,677,982.51	1,687,670.74	SSMH
8003	1,677,991.54	1,687,728.12	SSMH
8004	1,678,078.65	1,687,772.06	SSMH
8005	1,678,169.26	1,687,851.03	SSMH
8006	1,678,229.37	1,687,930.48	SSMH
8007	1,678,218.42	1,687,978.52	CO
8008	1,677,930.54	1,687,753.69	CO
8009	1,678,039.18	1,687,815.37	CO
8010	1,678,134.27	1,687,893.46	CO

IRONS			
Point #	Northing	Easting	Description
101	1,678,272.97	1,687,941.56	IRON
102	1,678,274.37	1,687,667.14	IRON
103	1,677,948.11	1,687,665.57	IRON
104	1,677,642.46	1,687,664.11	IRON
105	1,678,271.88	1,688,153.04	IRON
106	1,678,272.80	1,687,973.56	IRON
107	1,678,264.13	1,687,941.52	IRON
108	1,678,263.96	1,687,973.52	IRON
109	1,678,191.10	1,687,898.26	IRON
110	1,678,163.12	1,687,913.79	IRON
111	1,678,019.42	1,687,753.38	IRON
112	1,678,008.82	1,687,783.58	IRON
113	1,677,990.49	1,687,740.33	IRON
114	1,677,982.18	1,687,716.57	IRON
115	1,677,942.88	1,687,748.38	IRON
116	1,677,924.39	1,687,731.12	IRON
117	1,678,350.85	1,687,589.71	BM #1
118	1,678,349.04	1,687,939.60	BM #2

SLOAN'S ADDITION

SLOAN'S ADDITION₂₈



	Willow Creek East 4th Addition	
	COORDINATES Sanitary Sewer Improvements	
<small>Baughman Company, P.A. 315 Ellis St. Wichita, KS 67211 P 316-262-7271 F 316-262-0149 ENGINEERING SURVEYING PLANNING LANDSCAPE ARCHITECTURE</small>		
PROJECT NUMBER 468-2020-01299	DESIGN AEG	DRAWN HJW
REVISIONS:	APPROVED 	DATE 09/14/20
SCALE Noted		SHEET 14 OF 15