

GENERAL NOTES

- THE CONTRACTOR SHALL COMPLY WITH ALL APPLICABLE SAFETY REGULATIONS. ALL CONSTRUCTION SHALL BE COMPLETED FOLLOWING CURRENT CITY STANDARD SPECIFICATIONS AND SPECIAL PROVISIONS.
- CONTRACTOR WILL BE REQUIRED TO PROVIDE NOTICE TO UTILITY COMPANIES A MINIMUM OF SEVENTY-TWO (72) HOURS PRIOR TO ANY EXCAVATION, AS FOLLOWS:
 KANSAS ONE-CALL 687-2470
 THE CONTRACTOR MUST NOTIFY THE FOLLOWING IN CASE OF AN EMERGENCY:
 AT&T 1-800-246-8464
 BLACK HILLS ENERGY (GAS) 1-800-694-9898
 CITY OF WICHITA WATER & SEWER 1-316-219-8921
 CITY OF WICHITA STORMWATER 1-316-268-4090
 CITY OF WICHITA TRAFFIC 1-316-268-4034
 COX COMMUNICATIONS 1-888-249-3530
 KANSAS GAS SERVICE 1-888-462-4950
 EVERGY 1-800-544-4857
- UTILITY SERVICE LINES, POLES, ETC. ARE TO BE ADJUSTED AS NECESSARY BY OTHERS PRIOR TO CONSTRUCTION UNLESS THE PLANS SPECIFICALLY CALL FOR THEIR ADJUSTMENT BY THE CONTRACTOR OR UNLESS THE PLANS SPECIFICALLY IDENTIFY A UTILITY TO BE ADJUSTED BY ITS OWNER DURING CONSTRUCTION. EXISTING UTILITIES AND THEIR LOCATION, AS SHOWN ON THE PLANS, REPRESENT THE BEST INFORMATION OBTAINABLE FOR DESIGN. THE CONTRACTOR WILL BE REQUIRED TO WORK AROUND EXISTING UTILITIES WITHIN THE RIGHT-OF-WAY WHICH DO NOT CONFLICT WITH PROPOSED CONSTRUCTION.
- RUBBLE FROM THE REMOVAL OF MISCELLANEOUS STRUCTURES AND EXCESS EXCAVATION WHICH IS TO BE WASTED SHALL BE DISPOSED OF ON SITES TO BE PROVIDED BY THE CONTRACTOR. THESE SITES SHALL BE APPROVED BY THE ENGINEER AS TO SUITABILITY, APPEARANCE AND SITE LOCATION. LOCATIONS, IN THE OPINION OF THE ENGINEER, THAT WILL LEAVE AN UNSIGHTLY APPEARANCE WILL NOT BE APPROVED. ALL DISPOSAL SITES MUST BE APPROVED BY THE KANSAS DEPARTMENT OF HEALTH AND ENVIRONMENT. MATERIAL EITHER STOCKPILED OR DISPOSED OF IN A FLOOD PLAIN WILL REQUIRE A KANSAS STATE BOARD OF AGRICULTURE PERMIT. ANY MATERIAL DUMPED IN WATERS OF THE UNITED STATES OR WETLANDS IS SUBJECT TO U.S. CORPS OF ENGINEERS PERMITTING REGULATIONS. ANY MATERIAL BURIED OR STOCKPILED BEYOND APPROVED CONSTRUCTION LIMITS WILL REQUIRE ADDITIONAL ARCHAEOLOGICAL INVESTIGATIONS UNLESS BURIED IN A PREVIOUSLY APPROVED BORROW LOCATION.
- TREES AND SHRUBS IN PUBLIC RIGHT-OF-WAY WHICH ARE IN DIRECT CONFLICT WITH PROPOSED NEW CONSTRUCTION SHALL BE REMOVED BY THE CONTRACTOR WITH THE CITY ENGINEER'S APPROVAL. TREES AND SHRUBS WHICH ARE NOT IN DIRECT CONFLICT WITH PROPOSED NEW CONSTRUCTION SHALL BE SAVED AND PROTECTED FROM DAMAGE.
- THE CONTRACTOR SHALL GIVE ALL PROPERTY OWNERS AND/OR TENANTS OF DEVELOPED PROPERTY ABUTTING THE CONSTRUCTION OF THIS PROJECT A MINIMUM OF TEN (10) DAYS NOTICE PRIOR TO START OF CONSTRUCTION.
- THE CONTRACTOR SHALL BE RESPONSIBLE FOR PRESERVING PROPERTY IRONS. THE CONTRACTOR WILL BE REQUIRED TO RE-ESTABLISH ANY PROPERTY IRONS WHICH ARE DAMAGED OR DESTROYED BY HIS CONSTRUCTION OPERATIONS. SUCH IRONS SHALL BE RE-ESTABLISHED BY A LICENSED LAND SURVEYOR IN ACCORDANCE WITH STATE LAWS.
- THE ENGINEERING DIVISION SHALL FIELD LOCATE WATER VALVES ONE TIME DURING CONSTRUCTION WHEN REQUESTED BY THE CONTRACTOR. IT SHALL BE THE CONTRACTOR'S RESPONSIBILITY TO PRESERVE SUCH FIELD LOCATIONS DURING THE CONSTRUCTION PROCESS. WATER VALVES, VALVE BOXES OR FIRE HYDRANTS DAMAGED DURING CONSTRUCTION SHALL BE REPAIRED BY CONTRACTOR AT HIS OWN EXPENSE. VALVE BOXES AND WATER METERS WITHIN THE PROJECT LIMITS SHALL BE ADJUSTED TO MATCH FIELD GRADES BY THE CONTRACTOR.
- IF TRAFFIC WILL BE IMPACTED BY CONSTRUCTION, A TRAFFIC CONTROL PLAN MUST BE SUBMITTED AND APPROVED BY THE CITY TRAFFIC ENGINEER, MIKE ARMOUR AT mik@cityofwichita.gov BEFORE CONSTRUCTION CAN BEGIN. THE CONTRACTOR SHALL BE RESPONSIBLE FOR ALL TRAFFIC CONTROL MEASURES TO FACILITATE CONSTRUCTION. ALL CONSTRUCTION ZONE MARKINGS AND SIGNAGE SHALL CONFORM TO THE LATEST VERSION OF THE MANUAL ON UNIFORM TRAFFIC CONTROL DEVICES (MUTCD) AS PUBLISHED BY THE US DEPT. OF TRANSPORTATION, FEDERAL HIGHWAY ADMINISTRATION. ALL COSTS ASSOCIATED WITH CONSTRUCTION MARKINGS AND SIGNAGE SHALL BE THE CONTRACTOR'S RESPONSIBILITY.
- ALL AREAS DISTURBED DURING CONSTRUCTION THAT WILL NOT BE UNDER PROPOSED PAVEMENT SHALL BE SEEDED AND MULCHED. COST SHALL BE CONSIDERED SUBSIDIARY TO PROJECT SEEDING.
- CONTRACTOR SHALL LIMIT THE EXTENT OF TRENCH OPEN OVERNIGHT AND WEEKENDS TO LESS THAN 50 FEET.
- EXISTING UTILITIES AND THEIR LOCATION, AS SHOWN ON THE PLANS REPRESENT THE BEST INFORMATION OBTAINABLE FOR DESIGN. LOCATION INFORMATION HAS BEEN OBTAINED FROM THE VARIOUS COMPANIES AND IS EITHER FROM COMPANY UTILITY DRAWINGS OR COMPANY PROVIDED FIELD LOCATIONS. THE PLAN LOCATIONS SHOWN ARE NOT GUARANTEED. ADDITIONAL EXISTING UTILITIES MAY ALSO BE ENCOUNTERED.
- A PORTION OF EXCESS EXCAVATED MATERIAL SHALL BE MOUNDED AROUND MANHOLES WHICH EXTEND MORE THAN ONE (1) FOOT ABOVE THE EXISTING GROUND. SUCH MOUND SHALL BE CONSTRUCTED WITH NEW DEVELOPMENT A SIX (6) FOOT DIAMETER FLAT TOP WITH 4 TO 1 SIDE SLOPES DOWN TO THE ORIGINAL GROUND. THE ELEVATION OF THE FLAT TOP OF THE MOUND SHALL BE 0.4 FOOT BELOW THE TOP OF THE MANHOLE.
- CONTRACTOR SHALL PROVIDE POSITIVE DRAINAGE AWAY FROM ALL MANHOLE COVERS.
- ALL STUBS AND PLUGGED PIPES SHALL BE LOCATED WITH GREEN PLASTIC TAPE IN THE SAME MANNER AS RISERS.
- CONNECTING TO EXISTING MANHOLES:
 PRIOR TO LAYING SEWER LINES USING EXISTING STUBS IN EXISTING MANHOLES, THE CONTRACTOR SHALL EXPOSE AND VERIFY THE ELEVATION, GRADE AND ALIGNMENT OF EXISTING STUBS AND NOTIFY THE ENGINEER OF ANY DEVIATION FROM THE PLANS. WHERE CONNECTION TO AN EXISTING MANHOLE THAT DOES NOT HAVE AN EXISTING STUB OR THE STUB IS UNSUITABLE DUE TO ELEVATION GRADE OR ALIGNMENT, THE CONTRACTOR SHALL BORE CUT INTO EXISTING MANHOLE WALL TO MAKE CONNECTION USING APPROVED WATER STOP GASKET, AND RESHAPE THE EXISTING MANHOLE INVERT TO PROVIDE SMOOTH FLOW. THE COST TO CONNECTING TO EXISTING MANHOLES IS INCIDENTAL TO THE PROJECT.
- THE CONTRACTOR SHALL PREVENT ANY CONSTRUCTION DEBRIS FROM ENTERING THE EXISTING SANITARY SEWER DURING CONSTRUCTION.
- THE CONTRACTOR SHALL BE RESPONSIBLE FOR MAINTAINING CONTINUOUS FLOW OF SEWAGE THROUGH CONSTRUCTION. CONTRACTOR'S PROPOSED METHOD FOR MAINTAINING SEWAGE FLOW SHALL BE SUBMITTED AND APPROVED BY THE SEWER MAINTENANCE DIVISION (316-268-4073) PRIOR TO STARTING AND BY-PASSING OF SEWAGE FLOWS.
- ALL TRAFFIC CONTROL DEVICES IN THE WORK ZONE (INCLUDING MARKINGS AND SIGNS) AND THEIR INSTALLATION AND MAINTENANCE SHALL COMPLY WITH THE LATEST EDITION OF THE MANUAL ON UNIFORM TRAFFIC CONTROL DEVICES (MUTCD). ALL TRAFFIC CONTROL DEVICES IN THE TRAVELED WAY OR CLEAR ZONE SHALL BE CRASHWORTHY (NCHRP REPORT 350 OR MASH COMPLIANT).
http://safety.ftwa.dot.gov/roadwaydept/policy_guide/road_hardware/wzd
- ALL CONSTRUCTION EQUIPMENT, INCLUDING VEHICLES, MATERIALS, AND DEBRIS, SHALL BE STORED OUTSIDE OF THE CLEAR ZONE. WHERE THIS CANNOT BE ACHIEVED THE CONTRACTOR SHALL PLACE APPROPRIATE SIGNS, OBJECT IDENTIFIERS, AND/OR BARRICADES IN COMPLIANCE WITH MUTCD.
- EXCEPT WHEN REQUIRED FOR SAFETY, TRAFFIC CONTROL SHALL NOT BLOCK ANY LANES OR SIDEWALKS WHEN WORK IS NOT BEING PERFORMED.
- FOLLOW THE LINK BELOW FOR DETAILS ON SPECIFIC CITY OF WICHITA STANDARD DETAILS:
<http://www.wichita.gov/PWU/Pages/Regulations.aspx>
- DEVELOPER FOR THIS PROJECT IS:
 SCHELLENBERG PROPERTIES, LLC
 7926 WEST 21ST STREET
 WICHITA, KANSAS, 67205
 MARVIN L. SCHELLENBERG, MEMBER
 316-721-2153

SANITARY SEWER

TO SERVE

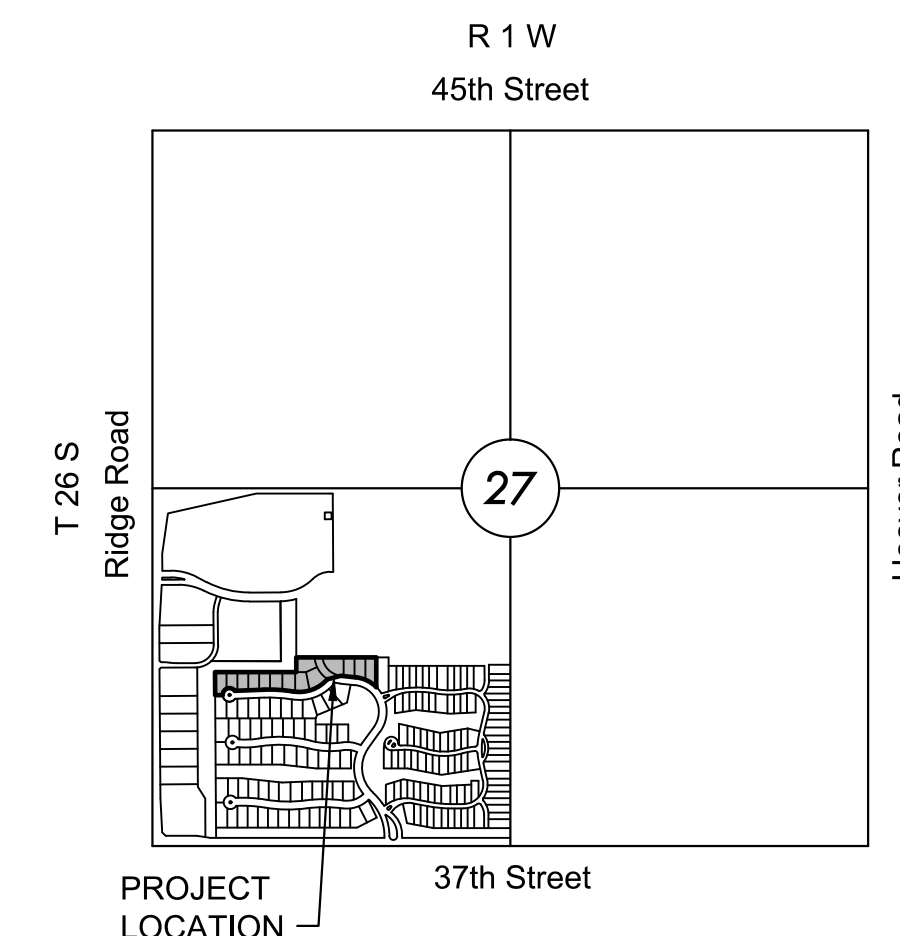
ESTANCIA ADDITION

LATERAL 569, SWI

PROJECT NO. 468-2020-85356

THE CITY OF WICHITA, KANSAS
 GARY JANZEN, P.E. - CITY ENGINEER

OCA NO. 810031



VICINITY MAP

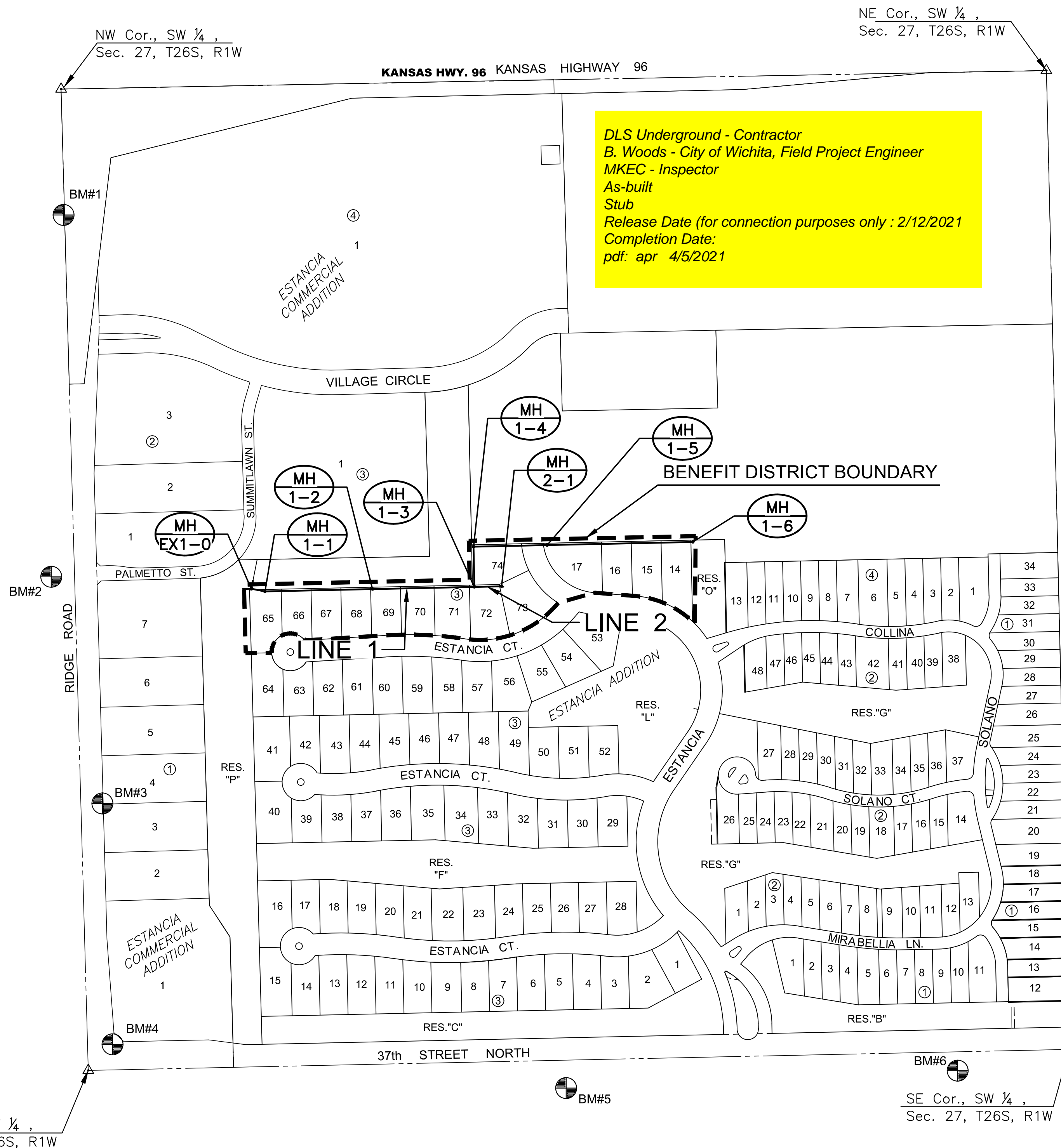
No Scale

INDEX TO DRAWINGS

| SHEET NO. | DESCRIPTION |
|-----------|-----------------------|
| 01 | TITLE SHEET |
| 02-04 | DETAILS |
| 05 | LINE 1 |
| 06 | LINE 1 CONT. & LINE 2 |
| 08 | BUBBLE MAP |
| 09-13 | BMP SHEETS |
| 14-15 | FINAL PLAT |

BENCHMARKS

- BM1 (PLATTED)
 SQUARE CUT TOP OF CURB, ON WEST SIDE OF MEDIAN ISLAND AND 10 FEET NORTH OF THE SOUTH END OF THE MEDIAN, LYING SOUTH OF THE K-96 AND RIDGE RD. 338 FEET SOUTH OF THE NW COR. OF THE SW ¼, SEC. 27, TWP. 26S, RGE 1W, 6TH P.M.
 ELEV. = 1335.80' NAVD 88
- BM2
 SQUARE CUT TOP OF CURB AT EAST END OF NOSE OF ISLAND, SOUTH DRIVE TO RIDGEWOOD MEDICAL BUILDING, 4031 N. RIDGE RD. WEST SIDE OF RIDGE RD.
 ELEV. = 1336.03' NAVD 88
- BM3
 RR SPIKE IN NW FACE OF 3RD POWER POLE NORTH OF 37TH/RIDGE RD INTERSECTION, EAST SIDE OF RIDGE RD.
 ELEV. = 1332.68' NAVD 88
- BM4
 SQUARE CUT NORTHEAST CORNER OF TRAFFIC SIGNAL VAULT AT NORTHEAST CORNER OF 37TH/RIDGE RD INTERSECTION. 12 FEET EAST OF TRAFFIC POLE BASE.
 ELEV. = 1330.34' NAVD 88
- BM5
 SQUARE CUT TOP OF CURB AT NORTH NOSE OF ISLAND AT DRIVE TO MID-KANSAS PEDIATRIC ASSOCIATES AT 6837 W 37TH ST. N.
 ELEV. = 1336.07' NAVD 88
- BM6
 SQUARE CUT TOP OF CURB ON EAST SIDE OF RIDGEPORT STREET AT END OF CURB AT SOUTHEAST CORNER OF RIDGEPORT ST. AND 37TH ST. N. INTERSECTION.
 ELEV. = 1333.08' NAVD 88
- VERTICAL DATUM: NAVD 88



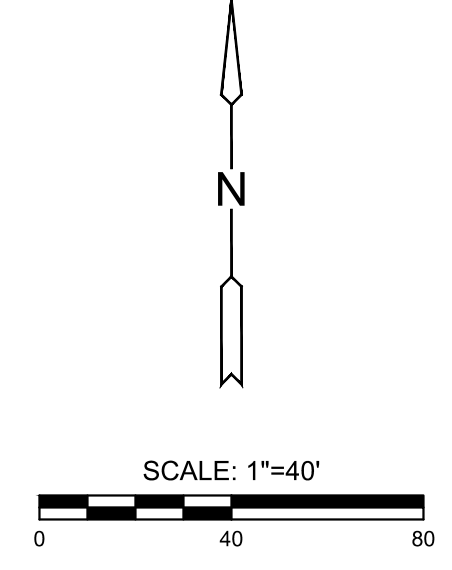
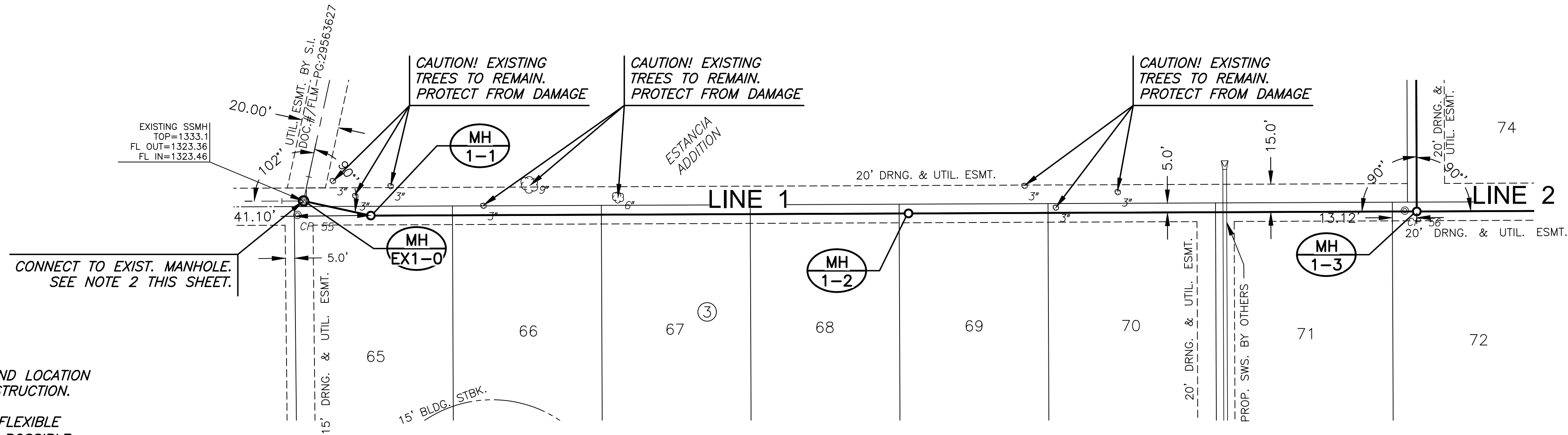
SANITARY SEWER PLANS FOR
ESTANCIA ADDITION
 PHASE 3B

©2020 MKEC Engineering All Rights Reserved
 These drawings and their contents, including, but not limited to, all concepts, designs, & ideas are the exclusive property of MKEC Engineering (MKEC), and may not be used or reproduced in any way without the express consent of MKEC.

TITLE SHEET

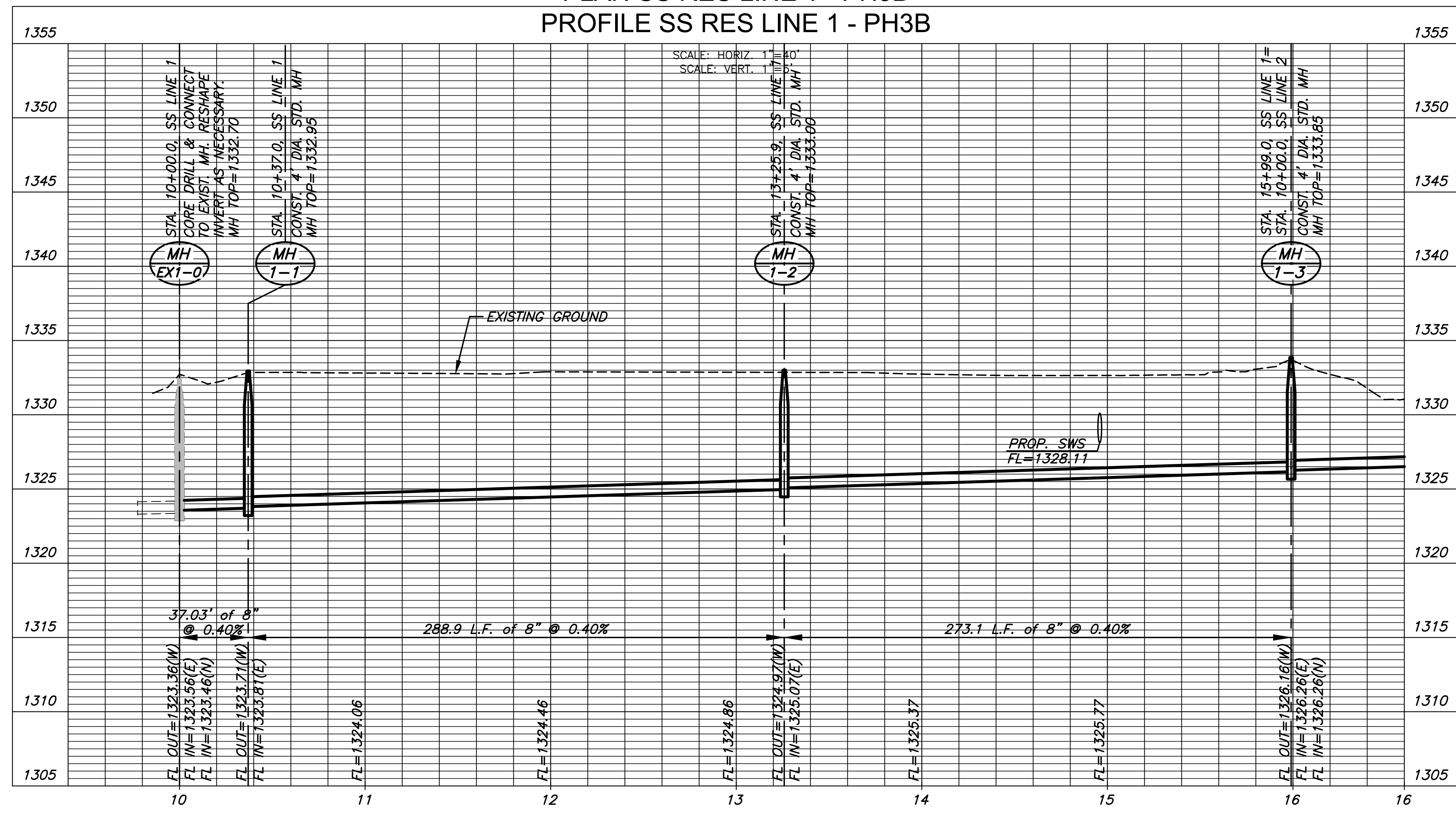
| | | |
|-------------|----------------|---------|
| PROJECT NO. | 468-2020-85356 | |
| DATE | MAY 2020 | |
| SCALE | 1"=200' | |
| DESIGNED | DRAWN | CHECKED |
| MKB | LM | SPE |
| NO. | REVISION | DATE |
| SHEET NO. | | |
| 01 OF 15 | | |

PLOTTED: Monday, June 08, 2020 @ 08:49AM



- NOTE:**
- CONTRACTOR TO VERIFY THE DEPTH AND LOCATION OF EXISTING UTILITIES PRIOR TO CONSTRUCTION.
 - CONTRACTOR SHALL UTILIZE EXISTING FLEXIBLE WATERSTOP AT THE (E) STUB. IF NOT POSSIBLE TO RE-USE BASED ON PROPOSED PIPE ANGLE, THE CONTRACTOR SHALL CORE DRILL MANHOLE AS NEEDED TO CONSTRUCT THE NEW PIPE, REMOVE EXISTING STUB AND REPAIR THE MANHOLE WALL WITH NON-SHRINK GROUT. COST SUBSIDIARY TO "CONNECT TO EXIST. STRUCTURE".

PLAN SS RES LINE 1 - PH3B
PROFILE SS RES LINE 1 - PH3B



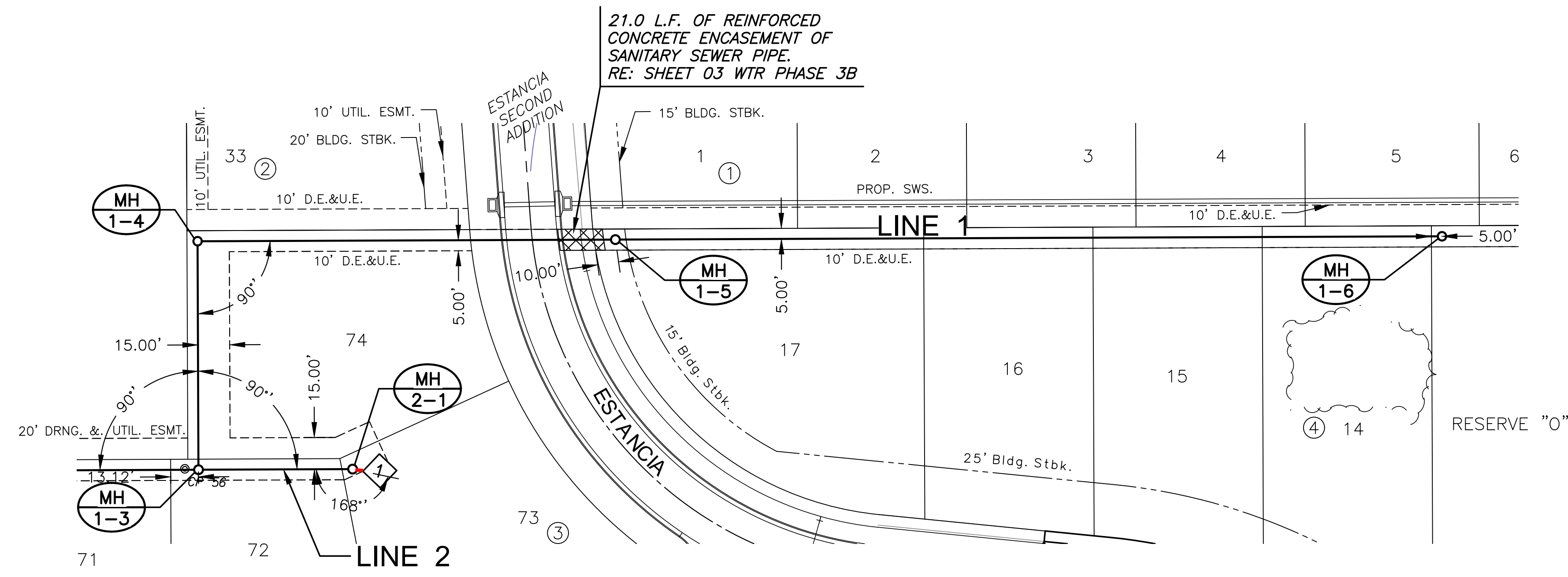
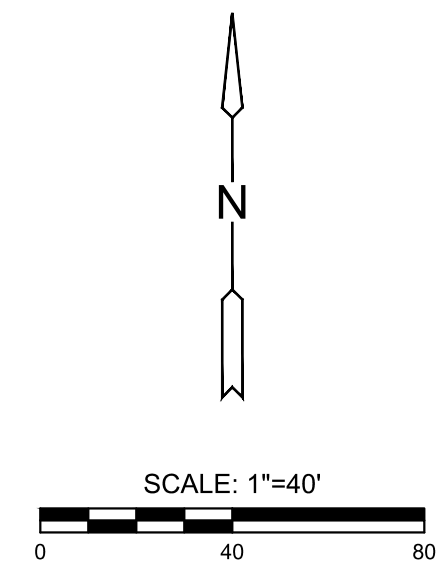
SANITARY SEWER PLANS FOR
ESTANCIA ADDITION
PHASE 3B

©2020 MKEC Engineering All Rights Reserved
www.mkec.com
These drawings and their contents, including, but not limited to, all concepts, designs, & ideas are the exclusive property of MKEC Engineering (MKEC), and may not be used or reproduced in any way without the express consent of MKEC.

| | | |
|-----------------------|----------------|---------|
| SAN LINE 1 | | |
| PROJECT NO. | 468-2020-85356 | |
| DATE | MAY 2020 | |
| SCALE | 1"=40' | |
| DESIGNED | DRAWN | CHECKED |
| MKB | SPE | SPE |
| NO. | REVISION | DATE |
| SHEET NO. 05 OF 15 | | |

J:\PROJECTS\2017\14010462_PREMIER_ESTANCIA\05-CIVIL\CADD\SANRESIDENTIAL\PH3B\14482_BP_01_P148B.DWG

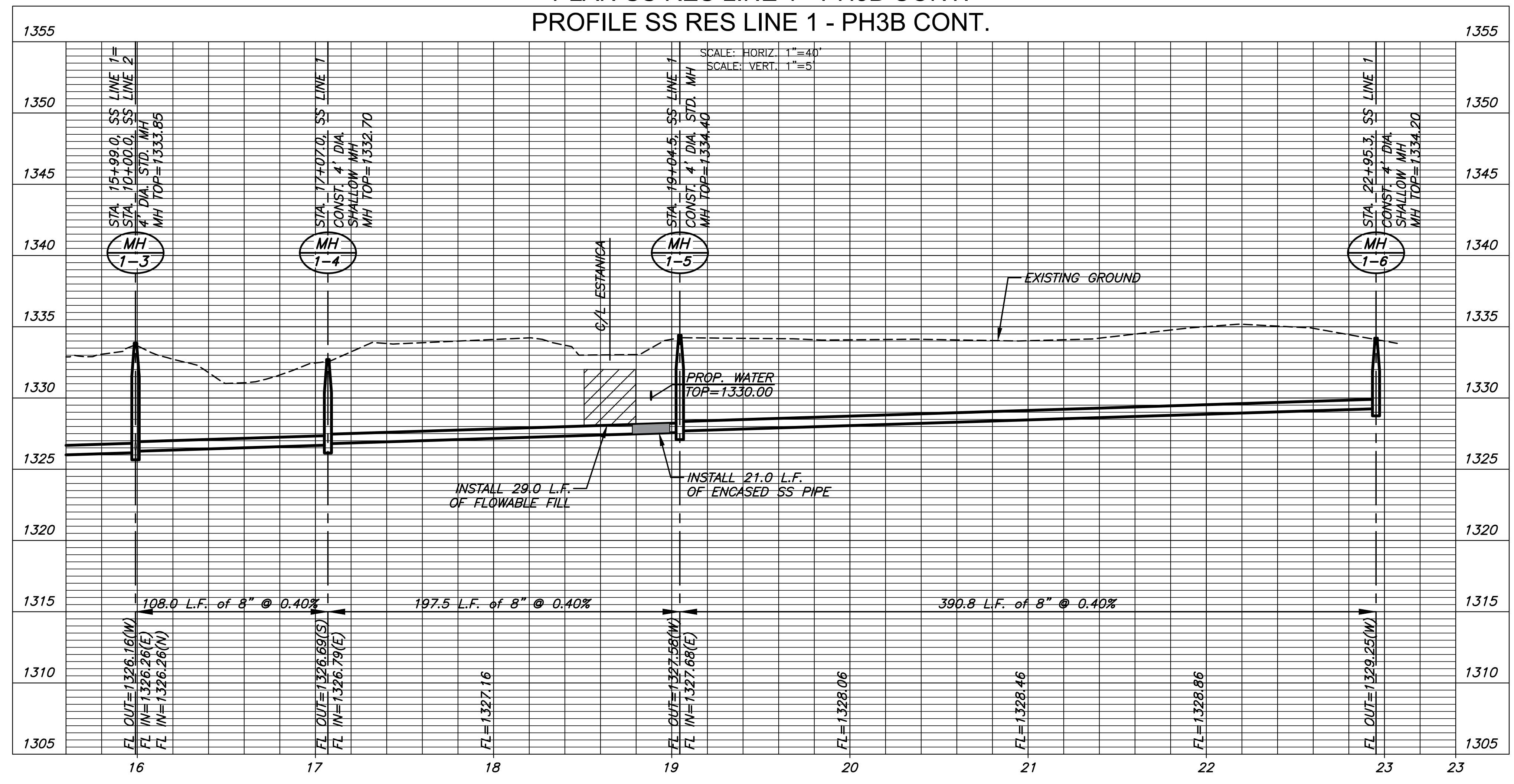
PLOTTED: Monday, June 08, 2020 @ 08:55AM



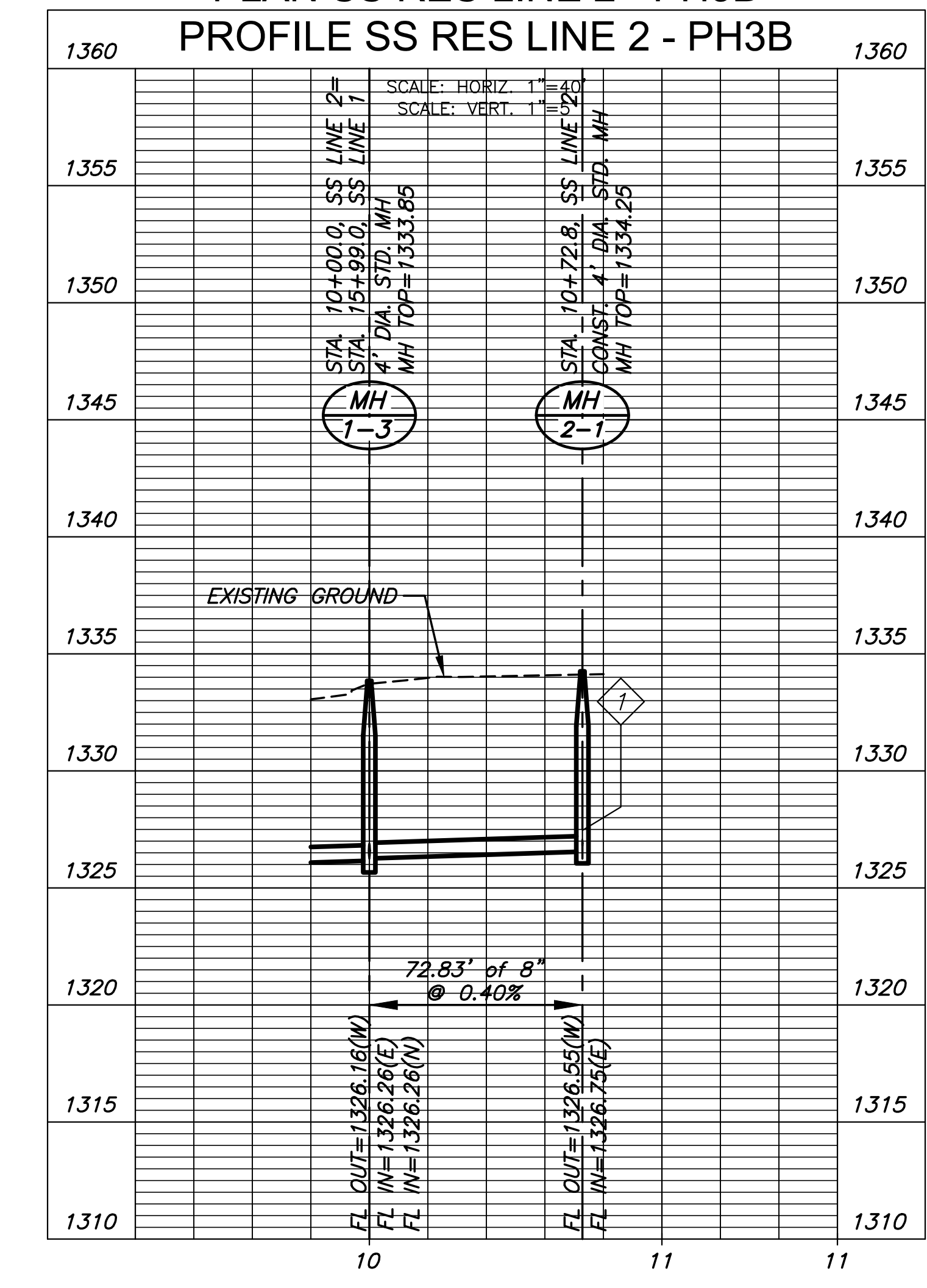
NOTE:
CONTRACTOR TO VERIFY THE DEPTH AND LOCATION OF EXISTING UTILITIES PRIOR TO CONSTRUCTION.

| NO. | TYPE | LOCATION | | | | DIRECTION | FOR INFORMATION ONLY | |
|-----|-----------------------|----------|-----------|----------|-----------|---------------|----------------------|--|
| | | LOT NO. | BLOCK NO. | LINE NO. | STATION | | APPROXIMATE LENGTH | |
| | | | | | | VERTICAL (FT) | HORIZONTAL (FT) | |
| 1 | 4" MANHOLE CONNECTION | 73 | 3 | 2 | 10+68/RT. | 7' | 5' | |

PLAN SS RES LINE 1 - PH3B CONT.
PROFILE SS RES LINE 1 - PH3B CONT.



PLAN SS RES LINE 2 - PH3B
PROFILE SS RES LINE 2 - PH3B



SANITARY SEWER PLANS FOR

ESTANCIA ADDITION

PHASE 3B

©2020 MKEC Engineering All Rights Reserved
www.mkec.com
These drawings and their contents, including, but not limited to, all concepts, designs, & ideas are the exclusive property of MKEC Engineering (MKEC), and may not be used or reproduced in any way without the express consent of MKEC.

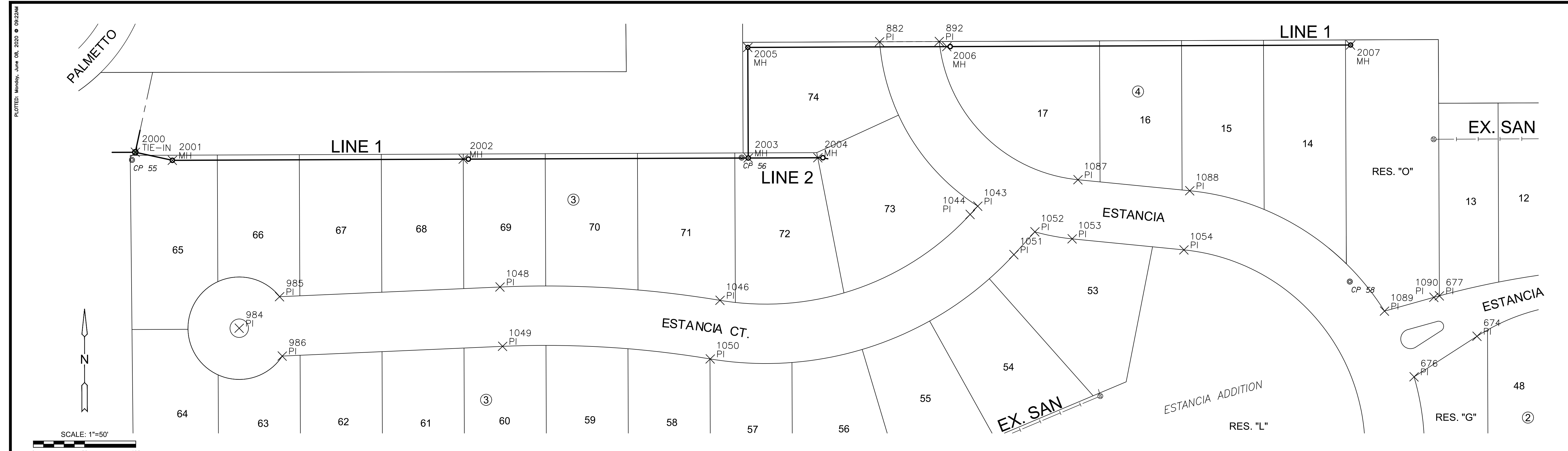
SAN LINE 1 CONT. & LINE 2

| | | |
|-------------|----------------|---------|
| PROJECT NO. | 468-2020-85356 | |
| DATE | MAY 2020 | |
| SCALE | 1"=40' | |
| DESIGNED | DRAWN | CHECKED |
| MKB | LM | SPE |

| NO. | REVISION | DATE |
|-----|----------|------|
| | | |

SHEET NO.
06 OF 15

J:\PROJECTS\2017\1401010462_PREMIER_ESTANCIA\GIS\CIVIL\CADD\SAN\RESIDENTIAL\PH3B\14462_BP_OC_PH3B.DWG



| PLAT POINTS | | | |
|-------------|------------|------------|-------|
| Point # | Northing | Easting | Desc. |
| 500 | 1710968.02 | 1625399.69 | PI |
| 502 | 1710967.33 | 1625367.70 | PI |
| 509 | 1710455.21 | 1625338.27 | PI |
| 510 | 1710620.23 | 1625373.56 | PI |
| 511 | 1710379.97 | 1625328.49 | PI |
| 513 | 1710362.90 | 1625312.10 | PI |
| 540 | 1710255.13 | 1625378.27 | PI |
| 552 | 1710314.35 | 1625329.99 | PI |
| 553 | 1710330.58 | 1625310.28 | PI |
| 555 | 1710248.81 | 1625340.88 | PI |
| 556 | 1710747.72 | 1625011.78 | PI |
| 557 | 1710755.37 | 1625237.41 | PI |
| 572 | 1710341.80 | 1625208.98 | PI |
| 588 | 1710311.38 | 1625218.90 | PI |
| 604 | 1709986.55 | 1625379.64 | PI |
| 608 | 1710124.38 | 1625403.70 | PI |
| 610 | 1709965.02 | 1625380.96 | PI |
| 616 | 1709766.23 | 1625422.35 | PI |
| 620 | 1709861.20 | 1625420.32 | PI |
| 649 | 1709937.33 | 1625145.08 | PI |
| 650 | 1709939.27 | 1625235.67 | PI |
| 651 | 1709948.51 | 1624984.70 | PI |
| 657 | 1709765.54 | 1625390.36 | PI |
| 658 | 1710116.90 | 1625372.59 | PI |
| 674 | 1710717.33 | 1624704.08 | PI |
| 676 | 1710676.64 | 1624643.40 | PI |
| 677 | 1710756.17 | 1624666.69 | PI |
| 702 | 1710340.34 | 1624944.70 | PI |

| PLAT POINTS | | | |
|-------------|------------|------------|-------|
| Point # | Northing | Easting | Desc. |
| 703 | 1710360.40 | 1624770.79 | PI |
| 707 | 1710359.85 | 1624763.38 | PI |
| 708 | 1710376.47 | 1624744.09 | PI |
| 718 | 1710372.77 | 1624694.23 | PI |
| 733 | 1710328.49 | 1624773.16 | PI |
| 735 | 1710309.80 | 1624935.13 | PI |
| 737 | 1710457.10 | 1624609.91 | PI |
| 738 | 1710334.47 | 1624525.32 | PI |
| 750 | 1709678.19 | 1624658.41 | PI |
| 784 | 1709680.97 | 1624788.38 | PI |
| 785 | 1709969.07 | 1624857.85 | PI |
| 786 | 1709933.43 | 1624683.98 | PI |
| 788 | 1709913.18 | 1624652.04 | PI |
| 789 | 1709934.41 | 1624635.14 | PI |
| 801 | 1709952.22 | 1624533.91 | PI |
| 804 | 1710008.43 | 1624567.24 | PI |
| 809 | 1710322.77 | 1624691.94 | PI |
| 845 | 1709708.28 | 1624787.80 | PI |
| 846 | 1709866.85 | 1624703.94 | PI |
| 847 | 1709885.68 | 1624719.95 | PI |
| 849 | 1709936.60 | 1624858.24 | PI |
| 850 | 1709916.93 | 1624979.58 | PI |
| 851 | 1709905.33 | 1625145.77 | PI |
| 852 | 1709907.28 | 1625236.35 | PI |
| 853 | 1709941.39 | 1625336.77 | PI |
| 855 | 1709937.62 | 1625361.87 | PI |
| 856 | 1709860.52 | 1625388.32 | PI |
| 857 | 1710240.86 | 1625375.70 | PI |

| PLAT POINTS | | | |
|-------------|------------|------------|-------|
| Point # | Northing | Easting | Desc. |
| 859 | 1710449.83 | 1625375.81 | PI |
| 861 | 1710464.03 | 1625372.88 | PI |
| 862 | 1710613.54 | 1625404.85 | PI |
| 863 | 1710737.02 | 1625374.67 | PI |
| 865 | 1710758.60 | 1625373.66 | PI |
| 867 | 1710855.80 | 1625402.32 | PI |
| 882 | 1710994.65 | 1624116.17 | PI |
| 892 | 1710995.90 | 1624174.36 | PI |
| 979 | 1710355.28 | 1623524.41 | PI |
| 984 | 1710704.11 | 1623496.20 | PI |
| 985 | 1710735.56 | 1623535.06 | PI |
| 986 | 1710677.67 | 1623538.63 | PI |
| 1004 | 1709915.15 | 1623519.64 | PI |
| 1043 | 1710835.86 | 1624214.74 | PI |
| 1044 | 1710827.62 | 1624207.43 | PI |
| 1046 | 1710739.52 | 1623964.85 | PI |
| 1048 | 1710748.80 | 1623749.94 | PI |
| 1049 | 1710690.91 | 1623753.51 | PI |
| 1050 | 1710682.15 | 1623956.31 | PI |
| 1051 | 1710789.12 | 1624250.80 | PI |
| 1052 | 1710811.78 | 1624270.92 | PI |
| 1053 | 1710805.53 | 1624307.41 | PI |
| 1054 | 1710796.68 | 1624416.66 | PI |
| 1055 | 1710490.03 | 1624562.17 | PI |
| 1056 | 1710367.41 | 1624477.58 | PI |
| 1057 | 1710356.01 | 1624470.09 | PI |
| 1059 | 1710373.71 | 1624333.99 | PI |
| 1061 | 1710380.15 | 1624103.80 | PI |

| PLAT POINTS | | | |
|-------------|------------|------------|-------|
| Point # | Northing | Easting | Desc. |
| 1063 | 1710388.40 | 1623717.11 | PI |
| 1065 | 1710379.86 | 1623567.95 | PI |
| 1066 | 1710322.16 | 1623561.86 | PI |
| 1067 | 1710331.43 | 1623727.97 | PI |
| 1068 | 1710323.69 | 1624090.52 | PI |
| 1069 | 1710316.59 | 1624344.09 | PI |
| 1070 | 1710304.09 | 1624444.15 | PI |
| 1071 | 1709997.25 | 1624496.76 | PI |
| 1072 | 1709993.08 | 1624492.73 | PI |
| 1074 | 1709945.59 | 1624353.19 | PI |
| 1076 | 1709940.41 | 1624073.92 | PI |
| 1078 | 1709939.28 | 1623782.13 | PI |
| 1080 | 1709947.72 | 1623557.59 | PI |
| 1081 | 1709889.94 | 1623562.82 | PI |
| 1082 | 1709881.91 | 1623773.64 | PI |
| 1083 | 1709883.10 | 1624082.85 | PI |
| 1084 | 1709887.99 | 1624346.38 | PI |
| 1085 | 1709956.66 | 1624538.19 | PI |
| 1086 | 1709691.38 | 1624658.13 | PI |
| 1087 | 1710863.34 | 1624312.09 | PI |
| 1088 | 1710854.49 | 1624421.34 | PI |
| 1089 | 1710740.32 | 1624613.42 | PI |
| 1090 | 1710754.61 | 1624661.38 | PI |
| 1091 | 1710779.36 | 1625016.58 | PI |
| 1092 | 1710786.61 | 1625230.48 | PI |
| 1093 | 1710774.82 | 1625327.05 | PI |
| 1095 | 1710781.48 | 1625350.37 | PI |
| 1096 | 1710855.05 | 1625370.33 | PI |

| SANITARY POINTS | | | |
|-----------------|------------|------------|--------|
| Point # | Northing | Easting | Desc. |
| 2000 | 1710874.11 | 1623391.80 | TIE-IN |
| 2001 | 1710866.89 | 1623428.11 | MH |
| 2002 | 1710872.97 | 1623711.92 | MH |
| 2003 | 1710878.93 | 1623989.97 | MH |
| 2004 | 1710880.38 | 1624057.92 | MH |
| 2005 | 1710986.89 | 1623987.66 | MH |
| 2006 | 1710991.05 | 1624181.84 | MH |
| 2007 | 1710999.50 | 1624575.80 | MH |

| CONTROL POINTS | | | |
|----------------|------------|------------|-------|
| Point # | Northing | Easting | Desc. |
| 100 | 1709596.07 | 1624178.12 | CP |
| 101 | 1709656.12 | 1625269.09 | CP |
| 102 | 1710347.41 | 1622982.67 | CP |

CONTROL POINTS

CP #100
5/8" rebar with MKEC Aluminum Cap
N = 1709596.07 E = 1624178.12 Elev. = 1334.38
South side of 37th Street N., West of entrance drive to Mid Kansas Pediatric Association at address 6837 W 37th St N.
36 feet NW of fire hydrant
6 feet south of south edge of asphalt

CP #101
5/8 inch rebar with MKEC Aluminum Cap
N = 1709656.12 E = 1625269.09 Elev. = 1331.35'
North side of 37th St. N
5 feet north of north edge of asphalt
On extended line to the north with the centerline of Ridgport Street

CP #102
5/8 inch rebar with MKEC Aluminum Cap
N = 1710347.41 E = 1622982.67 Elev. = 1330.50
East Ridge Road in flowline of ditch
45 feet northwest of 3rd powerpole north of 37th Street N

Horizontal and Vertical Datum:

Horizontal Datum: Kansas Coordinate System 1983 South Zone. (Horizontal coordinates modified to ground using a scale factor of 1.000120014)

Vertical Datum: NAVD 88

EVERY ATTEMPT HAS BEEN MADE TO INSURE ALL COORDINATE VALUES SHOWN ARE AN ACCURATE AND TRUE REPRESENTATION OF THE CURRENT PLANS. ALL VALUES ARE TO BE CONFIRMED WITH THE FINAL SIGNED PLAN SET BEFORE USE.

©2020 MKEC Engineering All Rights Reserved www.mkec.com
These drawings and their contents, including, but not limited to, all concepts, designs, & ideas are the exclusive property of MKEC Engineering (MKEC), and may not be used or reproduced in any way without the express consent of MKEC.

BUBBLE MAP

| | | |
|-------------|----------------|---------|
| PROJECT NO. | 468-2020-85356 | |
| DATE | MAY 2020 | |
| SCALE | 1"=50' | |
| DESIGNED | DRAWN | CHECKED |
| MKB | LM | SPE |
| NO. | REVISION | DATE |

J:\PROJECTS\2017\101010482_PREMIER_ESTANCIA\05-CIVIL\CADD\SANRESIDENTIAL\PH3B\14482_BB_01_P1483.DWG PLOTTED: Monday, June 08, 2020 @ 09:22AM