

GENERAL NOTES:

1. Contractor will be required to provide notice to utility companies a minimum of seventy-two (72) hours prior to any excavation, as follows:

- Kansas One-Call 687-2470
- The Contractor must notify the following in case of an emergency:
- Cox Communications 262-4270
 - Kansas Gas Service 1-888-482-4950
 - Westar Energy 383-8650
 - Aquila Energy 1-800-303-0357
 - AT&T 268-2245
 - City of Wichita Water Dept. 268-4563
 - City of Wichita Sewer Maint. 268-4024
 - City of Wichita Storm Sewer Maint. 268-4090
 - City of Wichita Traffic Maint. 268-4034
 - Conoco Phillips Pipeline Co. 1-877-267-2290
 - Southern Star Pipeline Co. 329-6600
 - Kinder-Morgan Pipeline Co. 1-888-844-5658

2. Utility service lines, poles, valve boxes, meters, and etcetera are to be adjusted as necessary by others prior to construction unless the plans specifically call for their adjustment by the Contractor or unless the plans specifically identify a utility to be adjusted by its owner during construction. Existing utilities and their location, as shown on the plans, represent the best information obtainable for design. The Contractor will be required to work around existing utilities within the right-of-way which do not conflict with proposed construction.

3. Rubble from the removal of miscellaneous structures and excess excavation which is to be wasted shall be disposed of on sites to be provided by the Contractor. These sites shall be approved by the Engineer as to suitability, appearance and site location. Locations, in the opinion of the Engineer, that will leave an unsightly appearance will not be approved. All disposal sites must be approved by the Kansas Department of Health and Environment. Material either stockpiled or disposed of in a flood plain would require a Kansas State Board of Agriculture permit. Any material dumped in waters of the United States or wetlands is subject to U.S. Corps of Engineers permitting regulations. Any material buried or stockpiled beyond approved construction limits would require additional archaeological investigations unless buried in a previously approved borrow location.

4. Trees and shrubs in public right-of-way which are in direct conflict with proposed new construction shall be removed by the Contractor with the Engineer's approval. Trees and shrubs which are not in direct conflict with proposed new construction shall be saved and protected from damage.

5. The Contractor shall give all property owners and/or tenants of developed property abutting the construction of this project a minimum of ten (10) days notice prior to start of construction.

6. The Contractor shall be responsible for preserving property irons. The Contractor will be required to re-establish any property irons which are damaged or destroyed by his construction operations. Such irons shall be re-established by a licensed land surveyor in accordance with state laws.

7. All existing and proposed erosion control measures including silt fencing, erosion control mat, straw bales, inlet barriers, and const. entrance shall be maintained throughout construction by the contractor and until project is accepted by the City of Wichita. The on-site engineer shall complete weekly reports on the status of erosion control measures. The contractor shall be required to comply with maintenance and/or replacement of erosion control measures as determined by the on-site engineer until project is accepted by City of Wichita. Maintenance and/or replacement of erosion control measures to be paid by L.S. bid item "Maintain Existing BMP's."

8. All excess excavation shall remain on-site and shall be stockpiled or spread at a location determined by the engineer.

9. The Contractor shall be responsible for maintaining continuous flow of sewage through construction. Contractor's proposed method for maintaining sewage flow shall be approved by the Engineer. Cost of maintaining flow of sewage through construction will not be paid for directly and this cost shall be considered as subsidiary to the other pay items of work.

10. All areas disturbed during construction shall be seeded as follows (Temporary Seeding):

Seed: Rye grass (PLS)--5 lbs./1000 Sq. Ft.

All costs associated with seeding shall be included in bid item "Seeding". All seeding operations shall conform to City of Wichita Standard Specifications.

11. Trees and shrubs in the work area which are in direct conflict with proposed new construction shall be removed by the Contractor ONLY with the Developer or Baughman Company approval. Trees and shrubs which are not in direct conflict with proposed new construction shall be saved and protected from damage. If trimming is necessary, a chainsaw shall be used. Breaking limbs with equipment will not be allowed. An on-site pre-construction meeting will occur prior to any construction to discuss tree removal, tree protection, and tree trimming.

12. The Developer for this project is Kevin Mullen 8100 E. 22nd St. N., Bldg. 1000, Wichita, KS 67272 PH: (316) 684-7300 email: kevin@ritchiebuilding.com

SANITARY SEWER IMPROVEMENTS

to serve

BROOKFIELD ADDITION - PHASE III

CITY OF WICHITA, KANSAS

Gary Janzen, P.E. City Engineer

Project Number: 468-2020-018398

OCA Number: 810085

Nowak - Contractor
K. Yale - City of Wichita, Field Project Engineer
F. Smith - Baughman, Inspector
As-built
Stubs and Risers
Release Date (for connection purposes only): 4/9/2021
Completion Date: 7/6/2021
pdf: apr 4/15/2021

BENCHMARKS

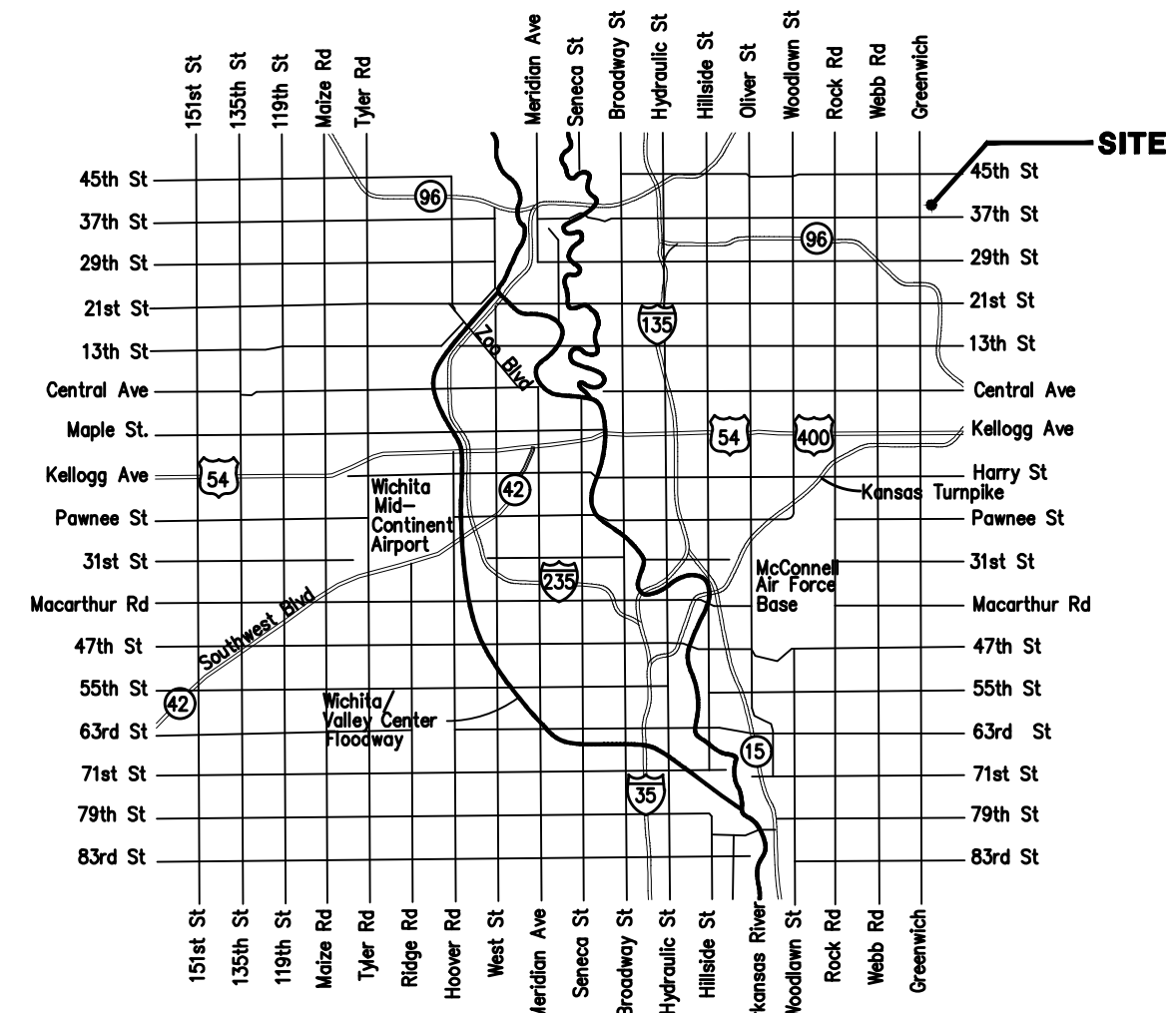
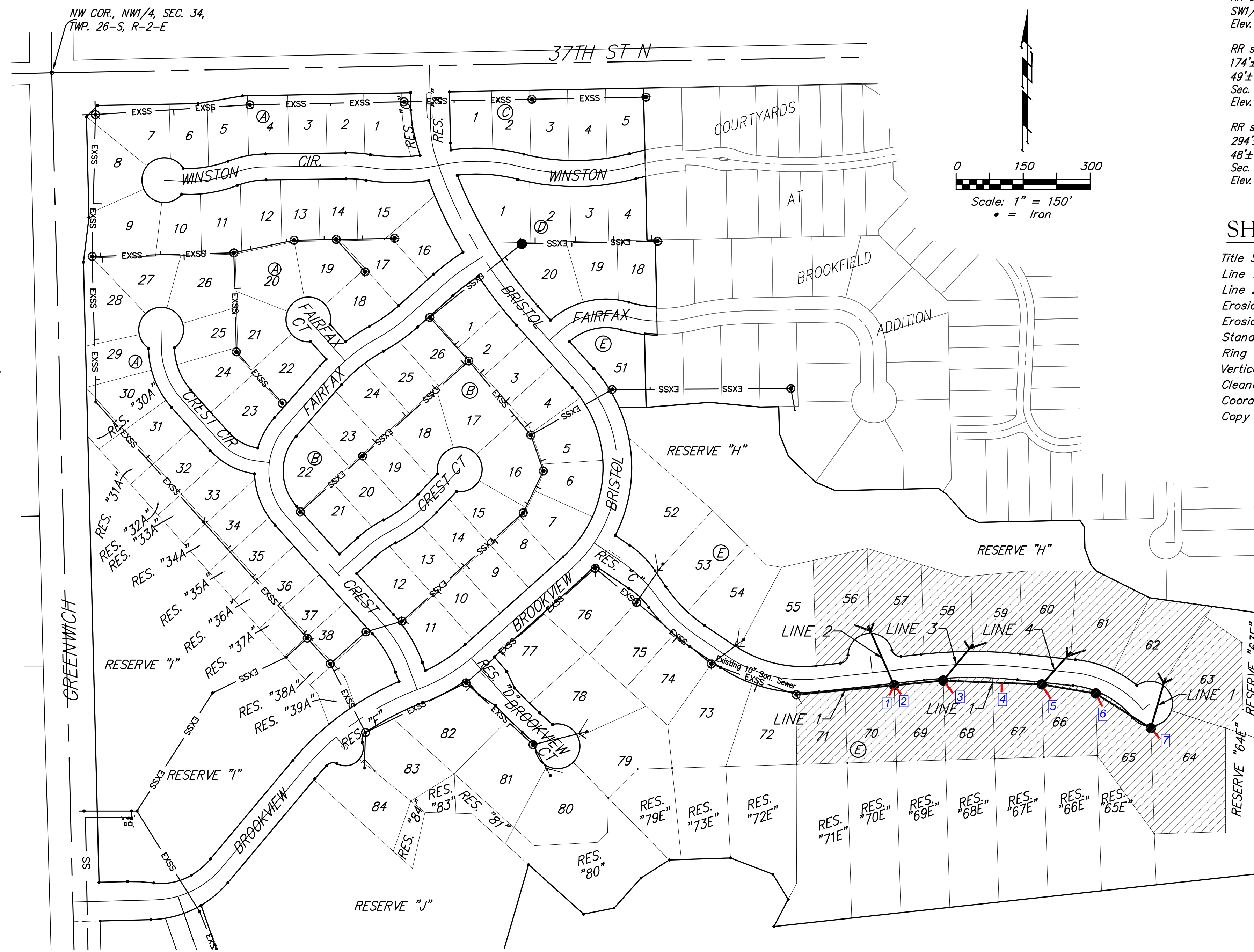
RR spike in asphalt, SW COR., N1/2, SW1/4, Sec. 34, TWP. 26-S, R-2-E. Elev. = 1400.59 NAVD88

RR spike in E. face of power pole, 174± N. of S. line, N1/2, SW1/4 & 49± E. of W. line, SW1/4, Sec. 34, TWP. 26-S, R-2-E. Elev. = 1398.64 NAVD88

RR spike in S. face of power pole, 294± S. of N. line, SW1/4, & 48± E. of W. line, SW1/4, Sec. 34, TWP. 26-S, R-2-E. Elev. = 1386.14 NAVD88

SHEET INDEX

Title Sheet	1
Line 1	2
Line 2, Line 3, & Line 4	3
Erosion Control Plan	4
Erosion Control BMP Details	5-9
Standard Manhole Detail	10
Ring & Cover Detail	11
Vertical Riser Detail	12
Cleanout Detail	13
Coordinate Sheet	14
Copy of Plat	15-16

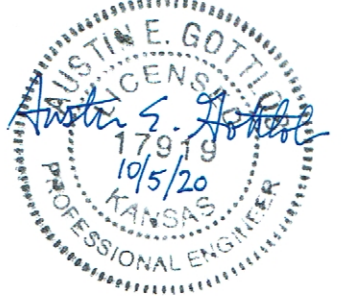


VICINITY MAP

BENEFIT DISTRICT



Baughman Company, P.A. 315 Ellis St. Wichita, KS 67211 P 316-262-7271 F 316-262-0149
ENGINEERING | SURVEYING | PLANNING | LANDSCAPE ARCHITECTURE



BENCHMARKS:
 RR spike in asphalt, SW COR., N1/2, SW1/4, Sec. 34, TWP. 26-S, R-2-E. Elev. = 1400.59 NAVD88

RR spike in E. face of power pole, 174± N. of S. line, N1/2, SW1/4 & 49± E. of W. line, SW1/4, Sec. 34, TWP. 26-S, R-2-E. Elev. = 1398.64 NAVD88

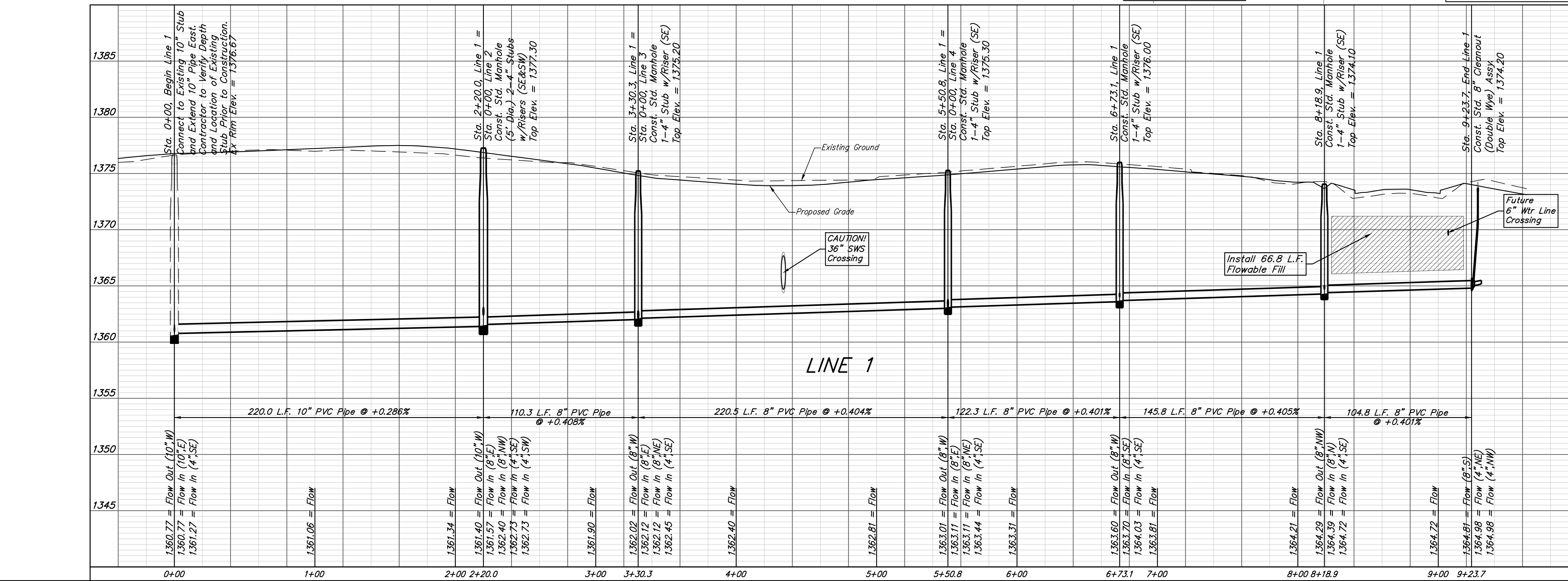
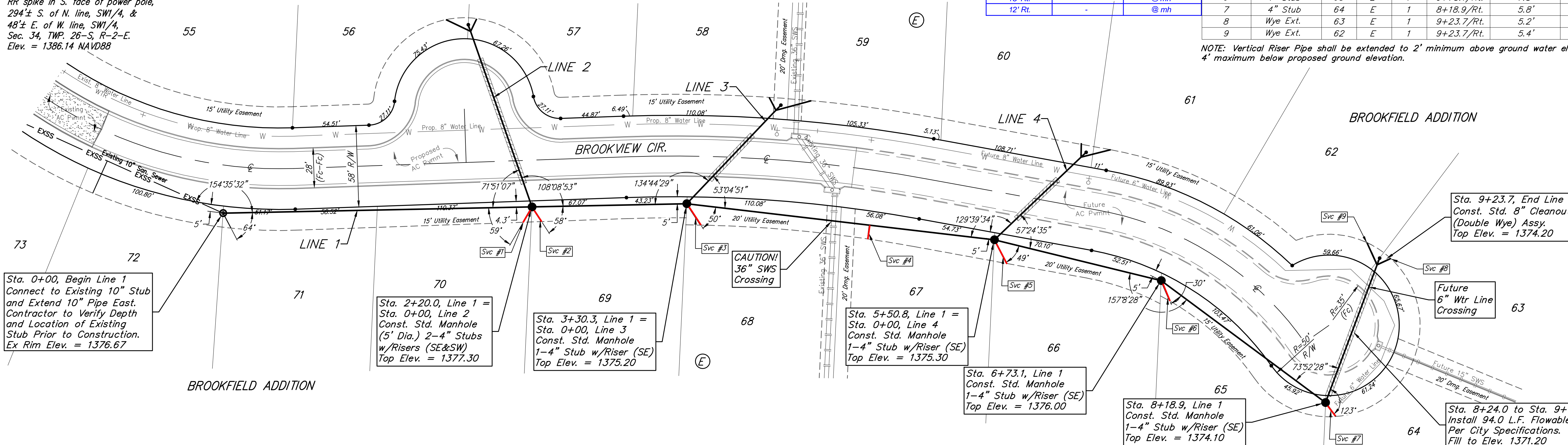
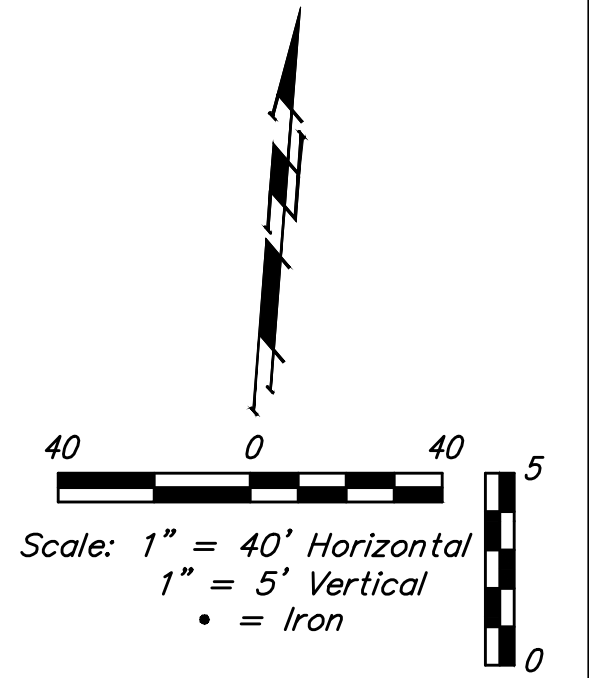
RR spike in S. face of power pole, 294± S. of N. line, SW1/4, & 48± E. of W. line, SW1/4, Sec. 34, TWP. 26-S, R-2-E. Elev. = 1386.14 NAVD88

The Contractor shall be required to backfill trench with sand from Sta. 0+00 to Sta. 8+18.9, Line 1. To be bid as "L.F. Fill, Sand, Flushed & Vibrated"

SEWER SERVICE TABLE

DISTANCE FROM MAIN TO RISER (LT./RT.)	DISTANCE FROM		NUMBER	TYPE	LOCATION			FOR INFORMATION ONLY		
	UPSTREAM MH	DOWNSTREAM MH			LOT NO.	BLOCK NO.	LINE NO.	STATION/DIRECTION	APPROXIMATE LENGTH 4" PIPE	VERTICAL
12' Rt.	-	@ mh	1	4" Stub	70	E	1	2+20.0/Rt.	10.0'	12.5'
12' Rt.	-	@ mh	2	4" Stub	69	E	1	2+20.0/Rt.	10.0'	12.5'
18' Rt.	-	@ mh	3	4" Stub	68	E	1	3+30.3/Rt.	7.9'	18'
10' Rt.	89'	131'	4	8" x 4" Tee	67	E	1	4+61.3/Rt.	7.4'	9.7'
20' Rt.	-	@ mh	5	4" Stub	66	E	1	5+50.8/Rt.	7.8'	19'
15' Rt.	-	@ mh	6	4" Stub	65	E	1	6+73.1/Rt.	7.8'	16'
12' Rt.	-	@ mh	7	4" Stub	64	E	1	8+18.9/Rt.	5.8'	12'
15' Rt.	-	@ mh	8	Wye Ext.	63	E	1	9+23.7/Rt.	5.2'	11'
12' Rt.	-	@ mh	9	Wye Ext.	62	E	1	9+23.7/Rt.	5.4'	17.4'

NOTE: Vertical Riser Pipe shall be extended to 2' minimum above ground water elevation and 4' maximum below proposed ground elevation.



Brookfield Addition - Phase III

LINE 1
Sanitary Sewer Improvements

Baughman Company, P.A. 315 Ellis St. Wichita, KS 67211 P 316-262-2721 F 316-262-0149
ENGINEERING | SURVEYING | PLANNING | LANDSCAPE ARCHITECTURE

PROJECT NUMBER: 468-2020-018398
DESIGN: AEG
DRAWN: JAK
APPROVED: [Signature]
DATE: Oct. 5, 2020

REVISIONS:

SCALE: Noted
SHEET: **2 OF 16**

C:\Projects\Brookfield Addition_1604190\Engineering\Phase 3\SS_2006E095\SS PLANS.dwg



BENCHMARKS:
 RR spike in asphalt, SW COR., N1/2, SW1/4, Sec. 34, TWP. 26-S, R-2-E. Elev. = 1400.59 NAVD88

RR spike in E. face of power pole, 174± N. of S. line, N1/2, SW1/4 & 49± E. of W. line, SW1/4, Sec. 34, TWP. 26-S, R-2-E. Elev. = 1398.64 NAVD88

RR spike in S. face of power pole, 294± S. of N. line, SW1/4, & 48± E. of W. line, SW1/4, Sec. 34, TWP. 26-S, R-2-E. Elev. = 1386.14 NAVD88

SEWER SERVICE TABLE

NUMBER	TYPE	LOCATION				FOR INFORMATION ONLY	
		LOT NO.	BLOCK NO.	LINE NO.	STATION/ DIRECTION	APPROXIMATE LENGTH 4" PIPE	
10	Wye Ext.	56	E	2	1+32.4/Lt.	10.0'	19.5'
11	Wye Ext.	57	E	2	1+32.4/Rt.	10.0'	10'

NOTE: Vertical Riser Pipe shall be extended to 2' minimum above ground water elevation and 4' maximum below proposed ground elevation.

SEWER SERVICE TABLE

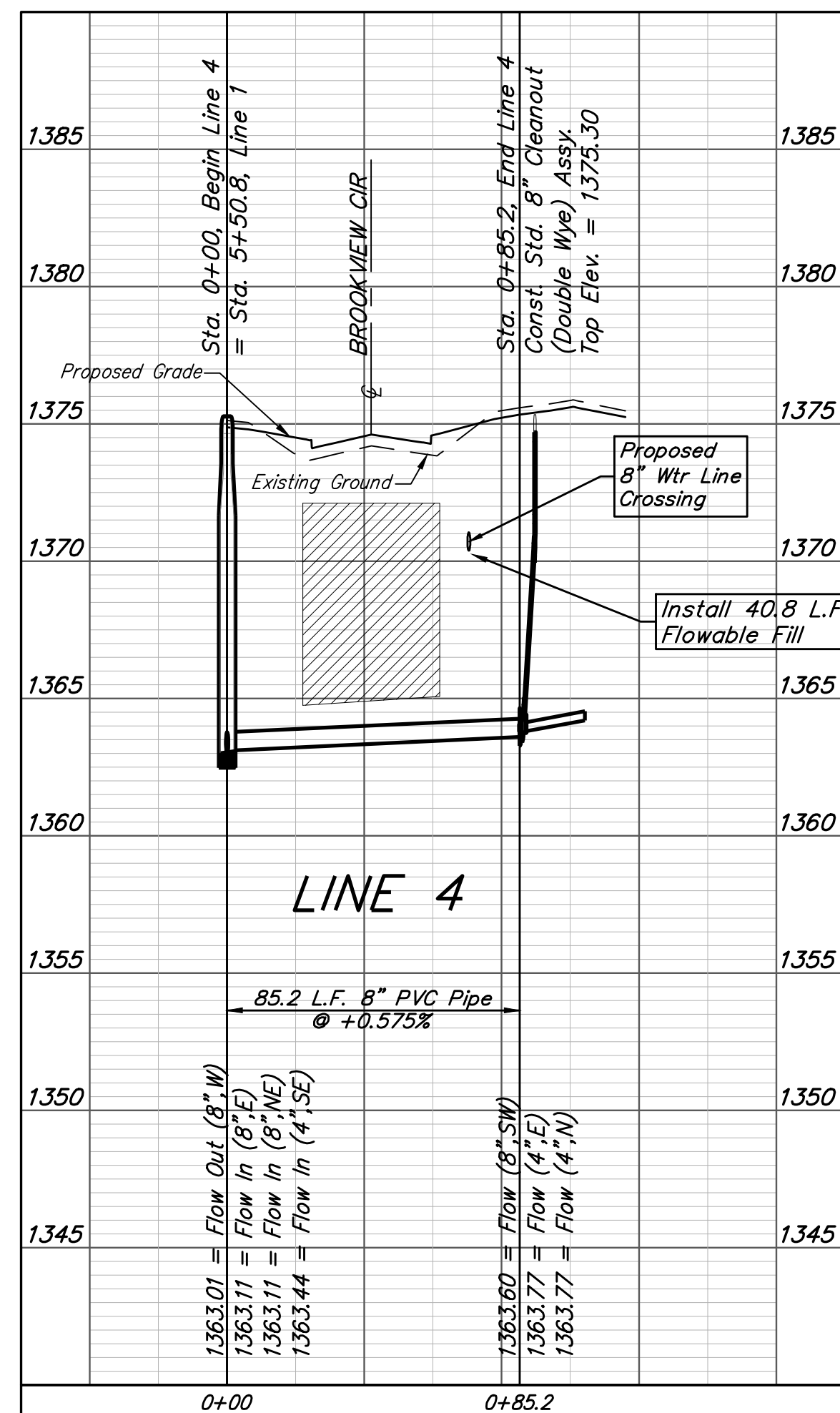
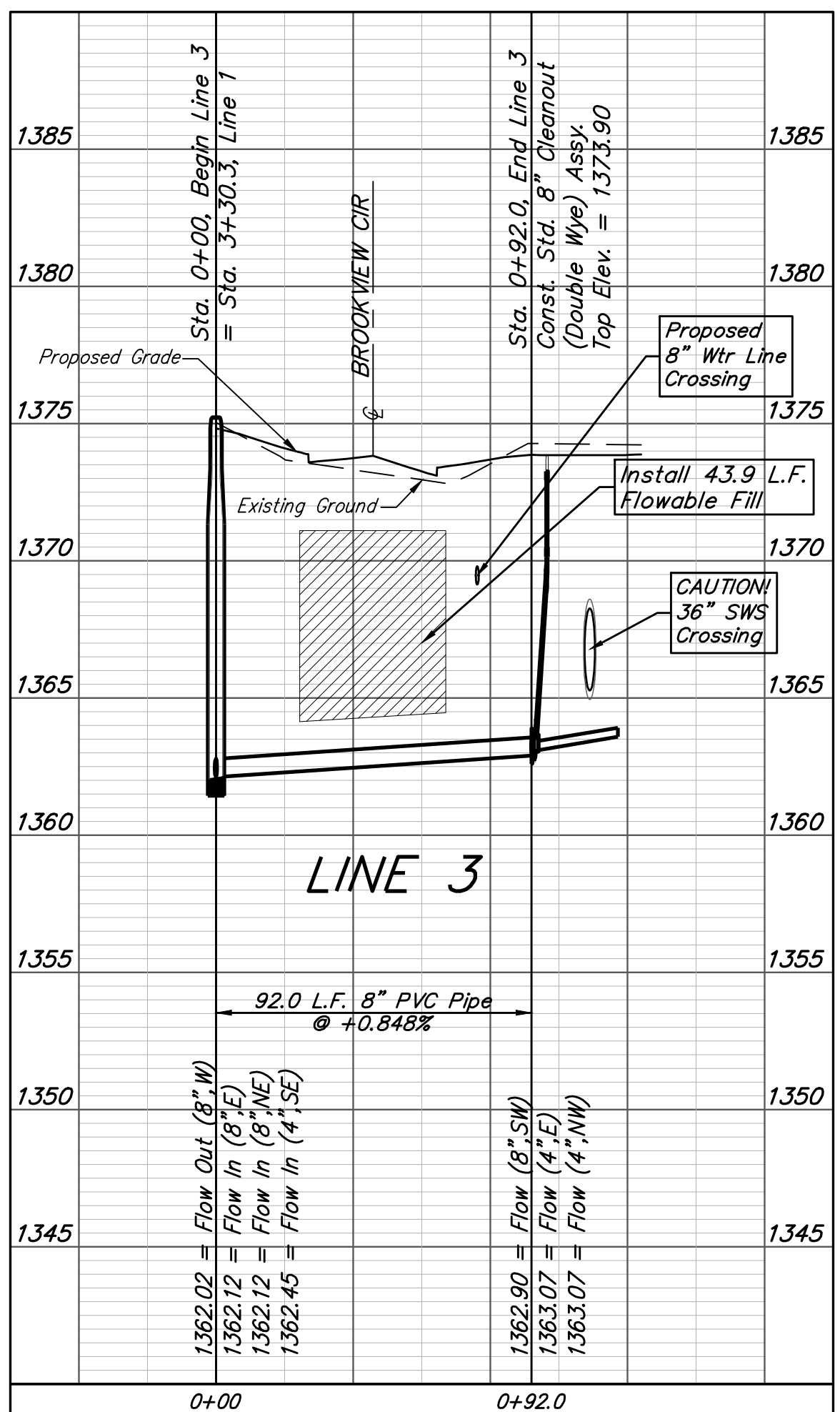
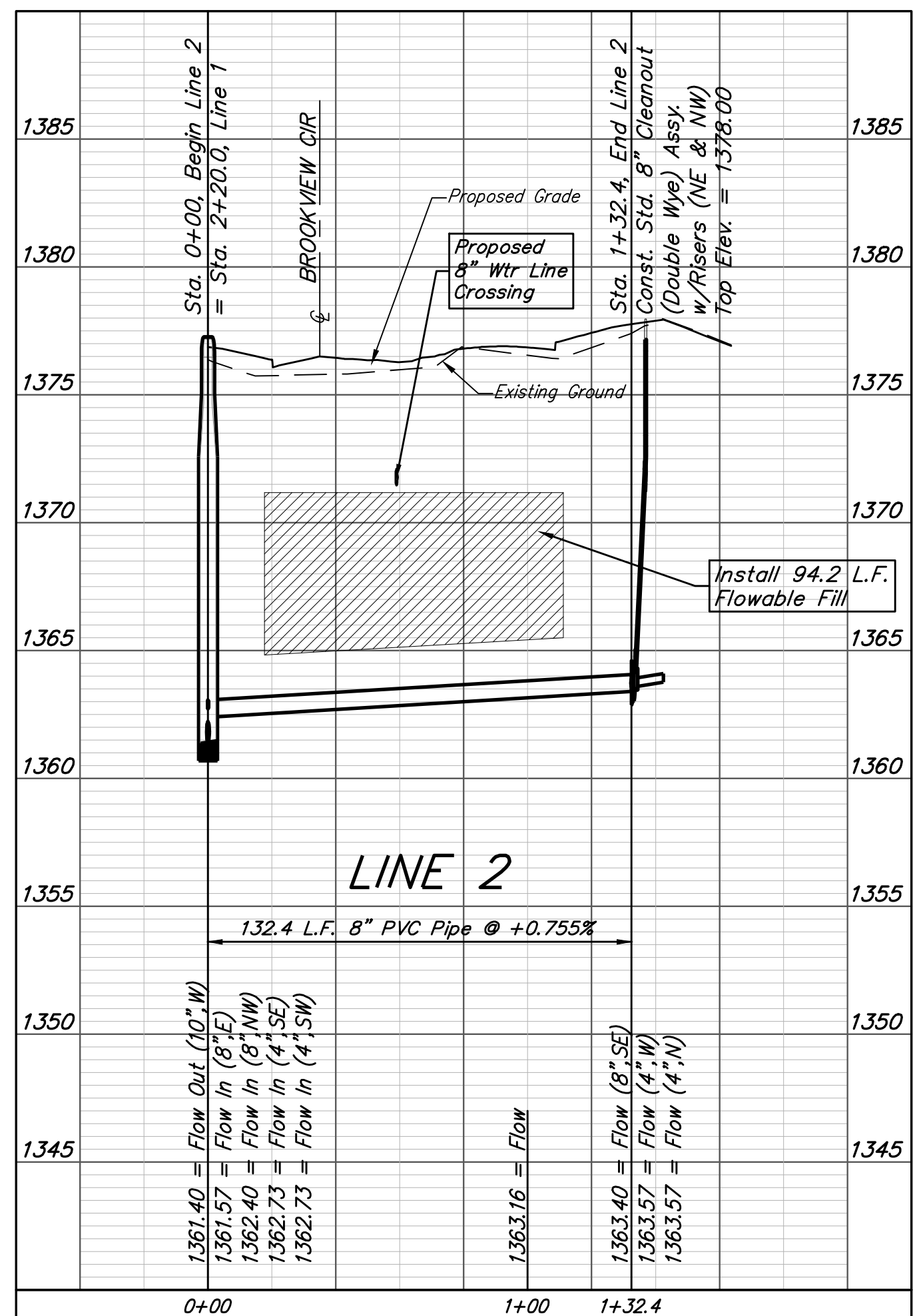
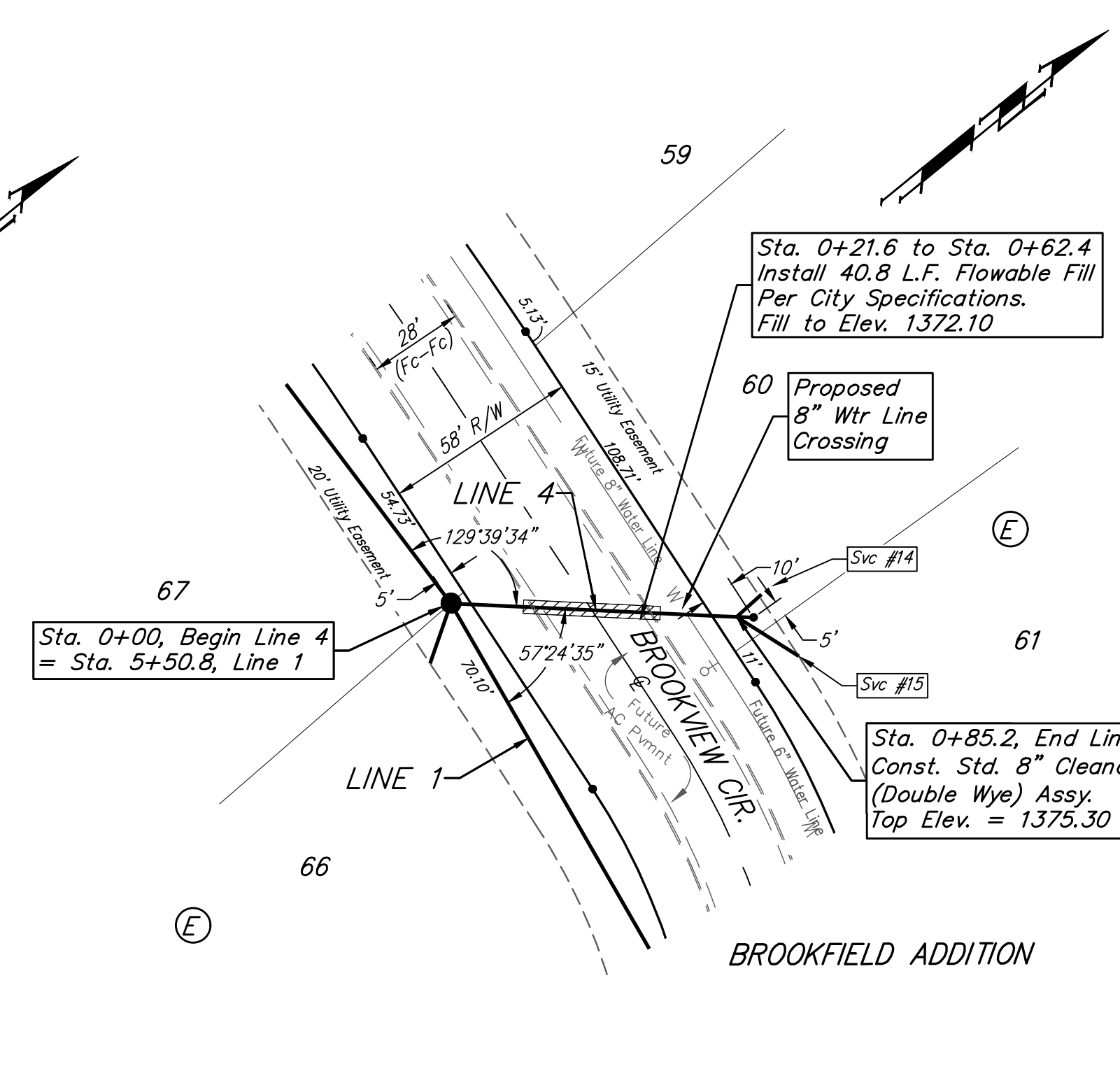
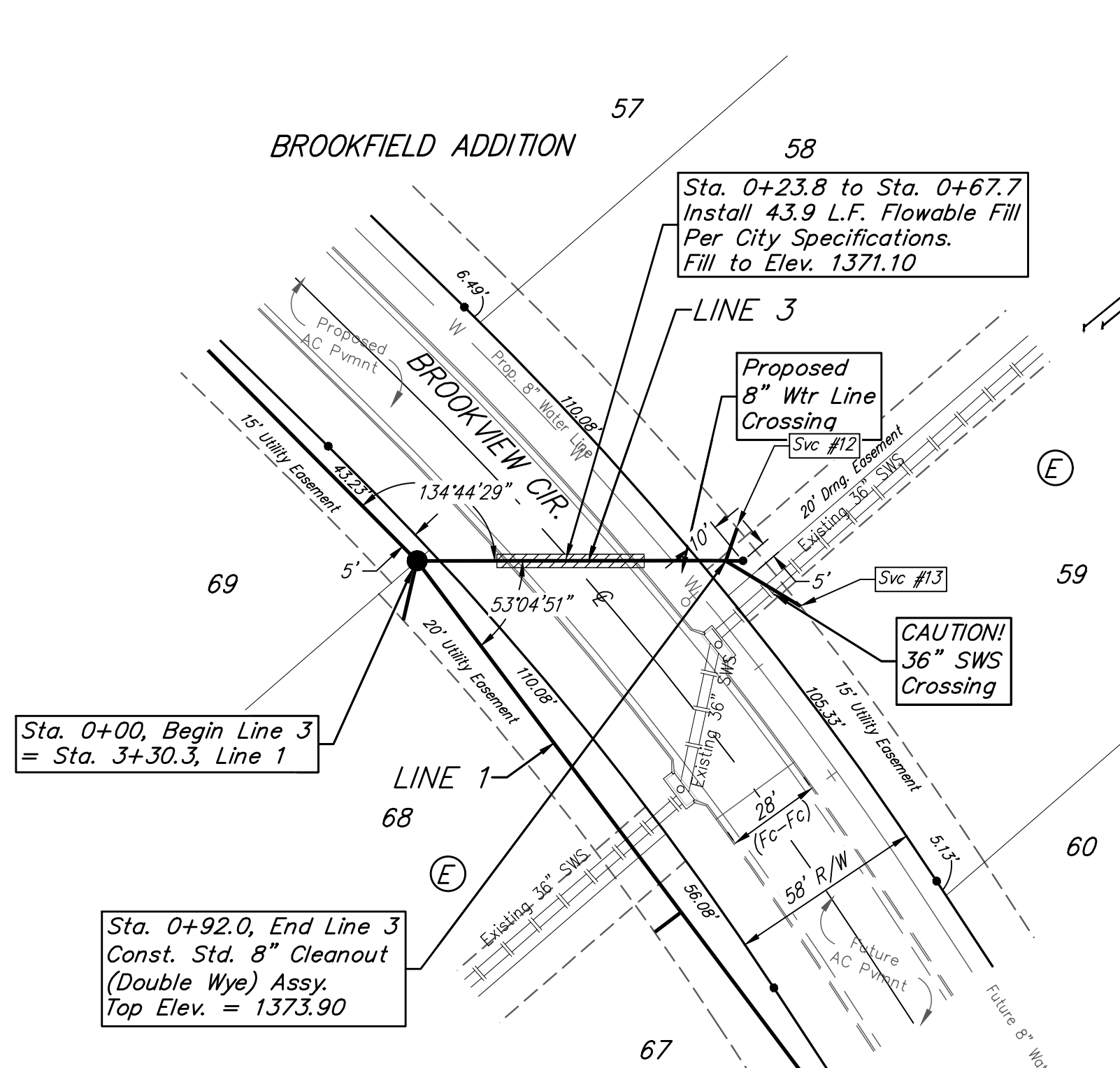
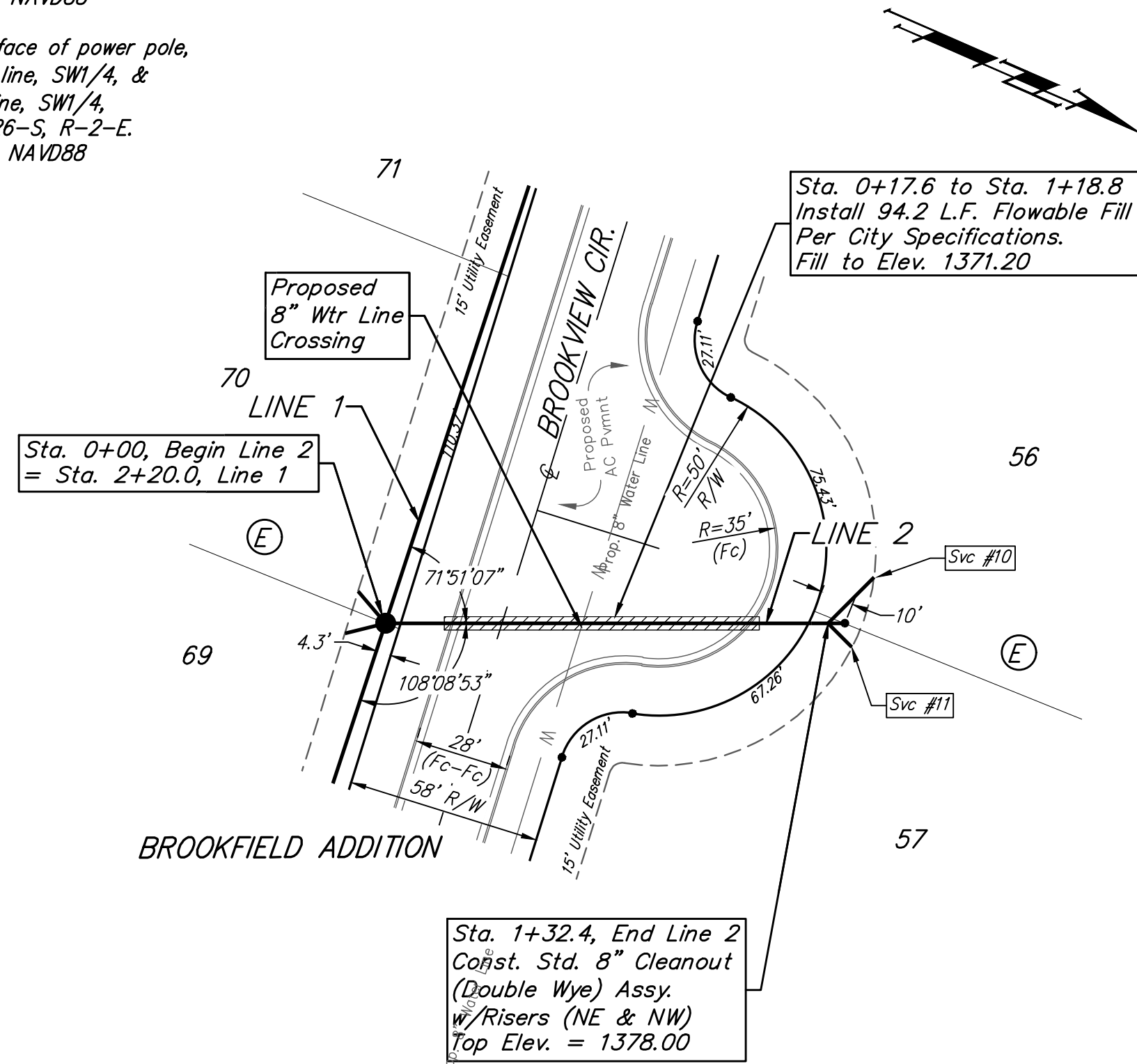
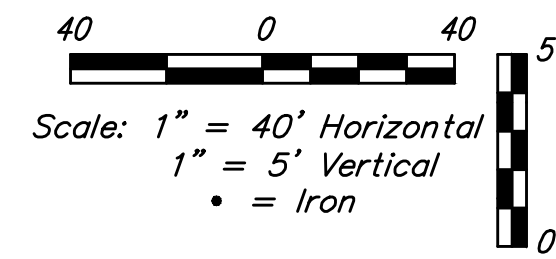
NUMBER	TYPE	LOCATION				FOR INFORMATION ONLY	
		LOT NO.	BLOCK NO.	LINE NO.	STATION/ DIRECTION	APPROXIMATE LENGTH 4" PIPE	
12	Wye Ext.	58	E	3	0+92.0/Lt.	6.8'	10.4'
13	Wye Ext.	59	E	3	0+92.0/Rt.	5.8'	26'

NOTE: Vertical Riser Pipe shall be extended to 2' minimum above ground water elevation and 4' maximum below proposed ground elevation.

SEWER SERVICE TABLE

NUMBER	TYPE	LOCATION				FOR INFORMATION ONLY	
		LOT NO.	BLOCK NO.	LINE NO.	STATION/ DIRECTION	APPROXIMATE LENGTH 4" PIPE	
14	Wye Ext.	60	E	4	0+85.2/Lt.	7.5'	10'
15	Wye Ext.	61	E	4	0+85.2/Rt.	7.5'	21.8'

NOTE: Vertical Riser Pipe shall be extended to 2' minimum above ground water elevation and 4' maximum below proposed ground elevation.



Baughman Brookfield Addition - Phase III
LINES 2, 3, & 4
 Sanitary Sewer Improvements

PROJECT NUMBER: 468-2020-018398
 DESIGN: AEG
 DRAWN: JAK
 APPROVED: [Signature]
 DATE: Oct. 5, 2020
 SCALE: Noted
 SHEET: 3 OF 16