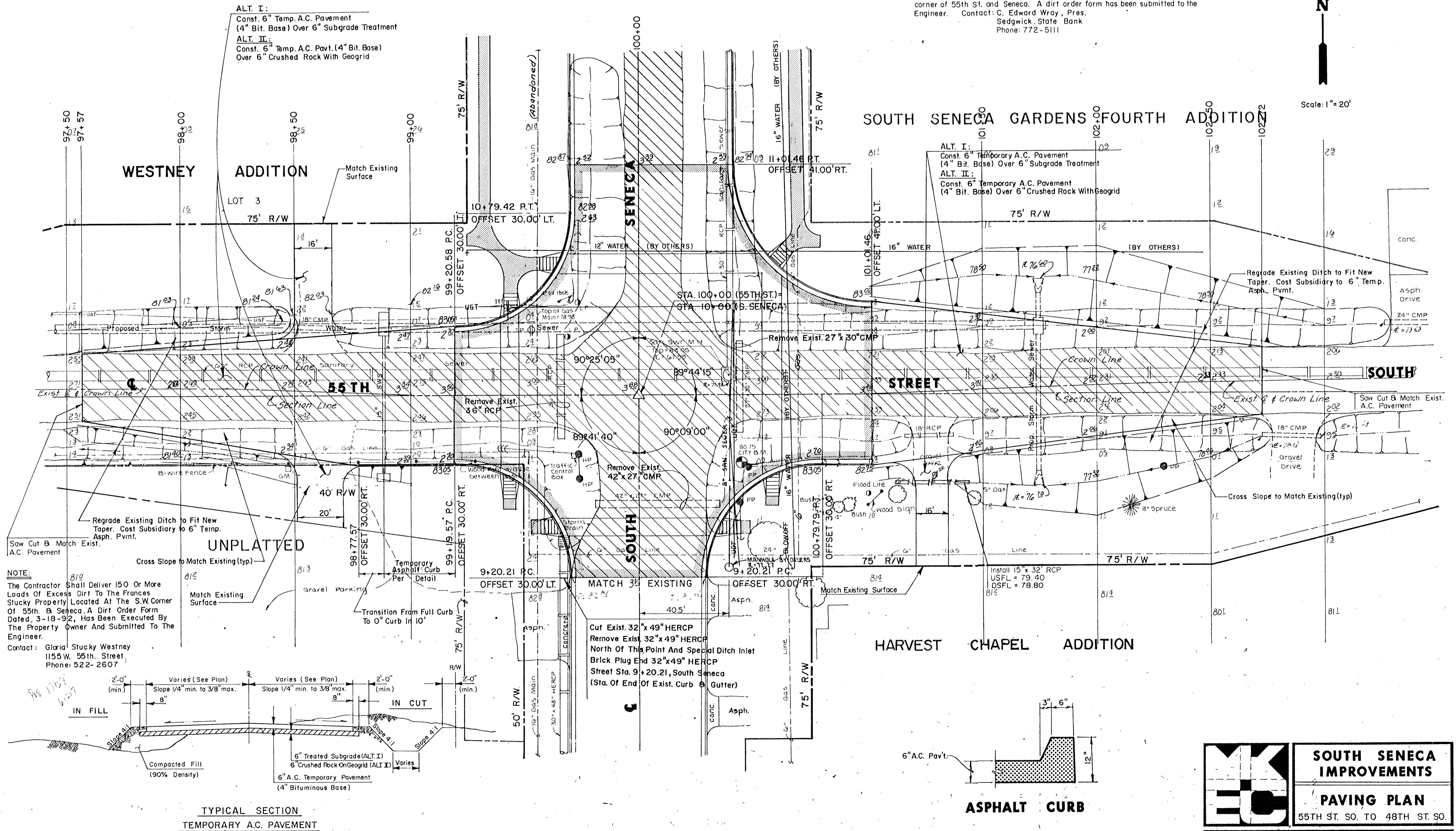
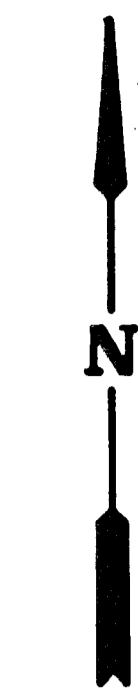


NOTE:

- The Contractor shall deliver 10+ loads of dirt to the Seneca Oaks Duplexes, approx. 300 ft. north of 55th St. A dirt order form has been submitted to the Engineer. Contact: Leonard Marotte
C/O Banner Realty, Inc.
221 S. Broadway 1302
Phone: 265-2555
- The Contractor shall deliver 25+ loads of dirt to the property at the northeast corner of 55th St. and Seneca. A dirt order form has been submitted to the Engineer. Contact: C. Edward Wray, Pres.
Sedgwick State Bank
Phone: 772-5111

Scale: 1" = 20'



NOTE:
The Contractor Shall Deliver 150 Or More Loads Of Excess Dirt To The Frances Stucky Property Located At The S.W. Corner Of 55th. & Seneca. A Dirt Order Form Dated, 3-18-92, Has Been Executed By The Property Owner And Submitted To The Engineer.
Contact: Glorid Stucky Westney
1155 W. 55th. Street
Phone: 522-2607

TYPICAL SECTION
TEMPORARY A.C. PAVEMENT

ASPHALT CURB

	SOUTH SENECA IMPROVEMENTS	Design DCH
	PAVING PLAN	Drawn by DPR
55TH ST. SO. TO 48TH ST. SO.		Checked by
MID-KANSAS ENGINEERING CONSULTANTS PA 3500 NORTH ROCK ROAD BUILDING #800 WICHITA, KANSAS 67226		Date Job no.
636-5566		Sheet 14 of 58