

GENERAL NOTES:

1. Contractor will be required to provide notice to utility companies a minimum of seventy-two (72) hours prior to any excavation, as follows:

Kansas One—Call 687-2470

The Contractor must notify the following in case of an emergency:

AT&T 1-800-246-8464
 Black Hills Energy 1-800-694-8989
 City of Wichita Water & Sewer 1-316-219-8921
 City of Wichita Stormwater 1-316-268-4090
 City of Wichita Traffic 1-316-268-4034
 Cox Communications 1-888-249-3530
 Kansas Gas Service 1-888-482-4950
 Westar Energy 1-800-544-4857

2. Utility service lines, poles, etc. are to be adjusted as necessary by others prior to construction unless the plans specifically call for their adjustment by the Contractor or unless the plans specifically identify a utility to be adjusted by its owner during construction. Existing utilities and their location, as shown on the plans, represent the best information obtainable for design. The Contractor will be required to work around existing utilities within the right-of-way which do not conflict with proposed construction.

3. Rubble from the removal of miscellaneous structures and excess excavation which is to be wasted shall be disposed of on sites to be provided by the Contractor. These sites shall be approved by the Engineer as to suitability, appearance and site location. Locations, in the opinion of the Engineer, that will leave an unsightly appearance will not be approved. All disposal sites must be approved by the Kansas Department of Health and Environment. Material either stockpiled or disposed of in a flood plain will require a Kansas State Board of Agriculture permit. Any material dumped in waters of the United States or wetlands is subject to U.S. Corps. of Engineers permitting regulations. Any material buried or stockpiled beyond approved construction limits will require additional archaeological investigations unless buried in a previously approved borrow location.

4. Trees and shrubs in public right-of-way which are in direct conflict with proposed new construction shall be removed by the Contractor with the City Engineer's approval. Trees and shrubs which are not in direct conflict with proposed new construction shall be saved and protected from damage.

5. The Contractor shall give all property owners and/or tenants of developed property abutting the construction of this project a minimum of ten (10) days notice prior to start of construction.

6. The Contractor shall be responsible for preserving property irons. The Contractor will be required to re-establish any property irons which are damaged or destroyed by his construction operations. Such irons shall be re-established by a licensed land surveyor in accordance with state laws.

7. All elevations shown are NAVD 88.

8. Connecting to Existing Manholes:
 Prior to laying sewer lines using existing stubs in existing manholes, the Contractor shall expose and verify the elevation, grade and alignment of existing stubs and notify the Engineer of any deviation from the plans. Where the stub is unusable due to elevation grade or alignment, the Contractor shall remove the stub and plug the hole, and reshape the existing manhole invert to provide smooth flow. Where connection to an existing manhole that does not have an existing stub, the Contractor shall core cut into existing manhole wall to make connection using approved water stop gasket, and reshape the existing manhole invert to provide smooth flow. The cost of connect to existing manholes is incidental to the project.

9. Contractor shall limit the extent of trench open overnight and weekends to less than 50 feet.

10. Contractor shall provide positive drainage away from all manhole covers.

11. The Contractor shall prevent any construction debris from entering the existing sanitary sewer during construction.

12. The Contractor shall protect from damage and support existing utilities through construction as approved by the utility owner and the Engineer at the contractor's expense.

13. All of Womer St. R/W shall be seeded and mulched as follows:

Seed -- Kansas Premium Fescue Blend; 8 lbs. PLS/1000 Sq. Ft.
 Annual Rye grass; 3 lbs./1000 Sq. Ft.
 Fertilizer -- 12-24-12 Ratio; 45 Lbs./Ac.
 Mulch -- 2 Tons Prairie Hay/Ac.

All other disturbed areas are to be seeded as follows:

Seed -- Rye grass; 5 lbs./1000 Sq. Ft.

All costs associated with seeding including mobilization, preparation of ground, seeding, fertilizing, mulching, etc. shall be included in the L.S. bid item "Seeding".

14. All existing and proposed erosion control measures including silt fencing, erosion control mat, straw bales, inlet barriers, and const. entrance shall be maintained throughout construction by the contractor and until project is accepted by the City of Wichita. The on-site engineer shall complete weekly reports on the status of erosion control measures. The contractor shall be required to comply with maintenance and/or replacement of erosion control measures as determined by the on-site engineer until project is accepted by City of Wichita. Maintenance and/or replacement of erosion control measures to be paid by measured quantity of each BMP item.

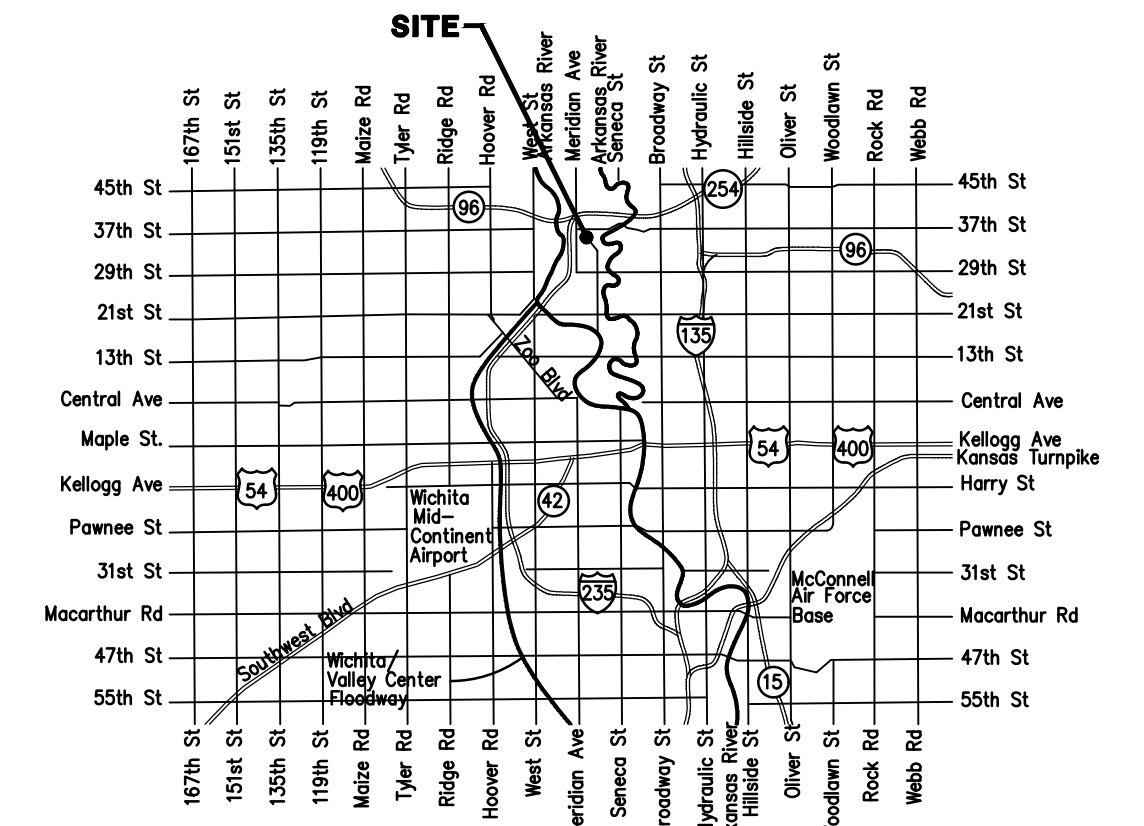
15. The developer for this project is Broadmoor One, LLC, Max Cole, Manager.

SANITARY SEWER IMPROVEMENTS to serve **WOMER PLAZA 2ND ADD.** CITY OF WICHITA, KANSAS

Gary Janzen, P.E. City Engineer

Project Number
~~468-83311~~ 85331

O.C.A. Number
 744468



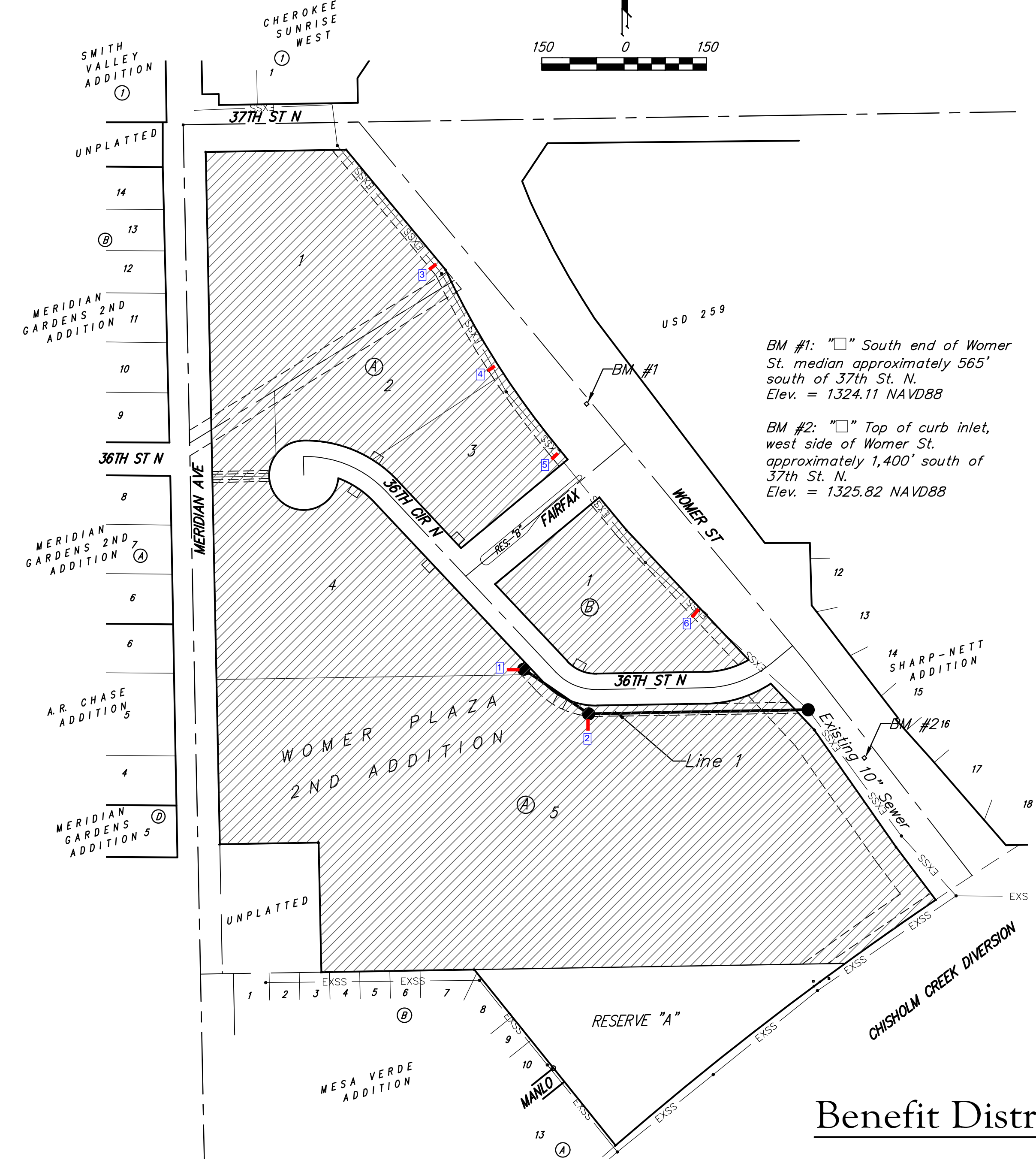
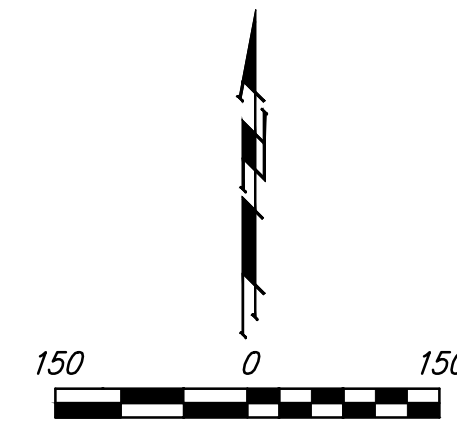
Vicinity Map

Dutton Construction - Contractor
 B. Woods - City of Wichita, Field Project Engineer
 D. VanSickle - Baughman, Inspector
 As-built
 Stubs & Risers
 Release Date (for connection purposes only): 7/20/20
 Completion Date:
 pdf: apr 4/5/2021

Benchmarks

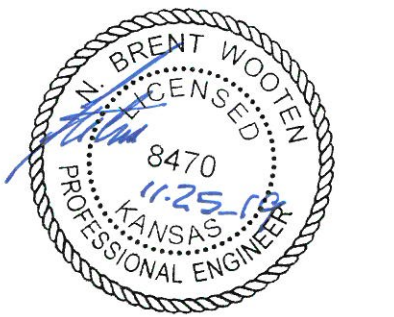
BM #1: "□" South end of Womer St. median approximately 565' south of 37th St. N.
 Elev. = 1324.11 NAVD88

BM #2: "□" Top of curb inlet, west side of Womer St. approximately 1,400' south of 37th St. N.
 Elev. = 1325.82 NAVD88



Sheet Index

Title Sheet	1
Line 1	2
Additional Risers	3
Erosion Control & Esmt. Grading Plan	4
Precast SS Manhole Detail	5
Manhole Frame & Cover Detail	6
Vertical Riser Detail	7
Erosion Control BMP Details	8-12
Coordinate Sheet	13
Copy of Plat	14



Benefit District

September 2019

Baughman Company, P.A. 315 Ellis St. Wichita, KS 67211 P 316-262-7271 F 316-262-0148
 ENGINEERING | SURVEYING | PLANNING | LANDSCAPE ARCHITECTURE

E:\Projects\Womer Plaza 2nd Addition_17402\F288\Engineering\Phase 1\SS 1905-E278\SS.dwg

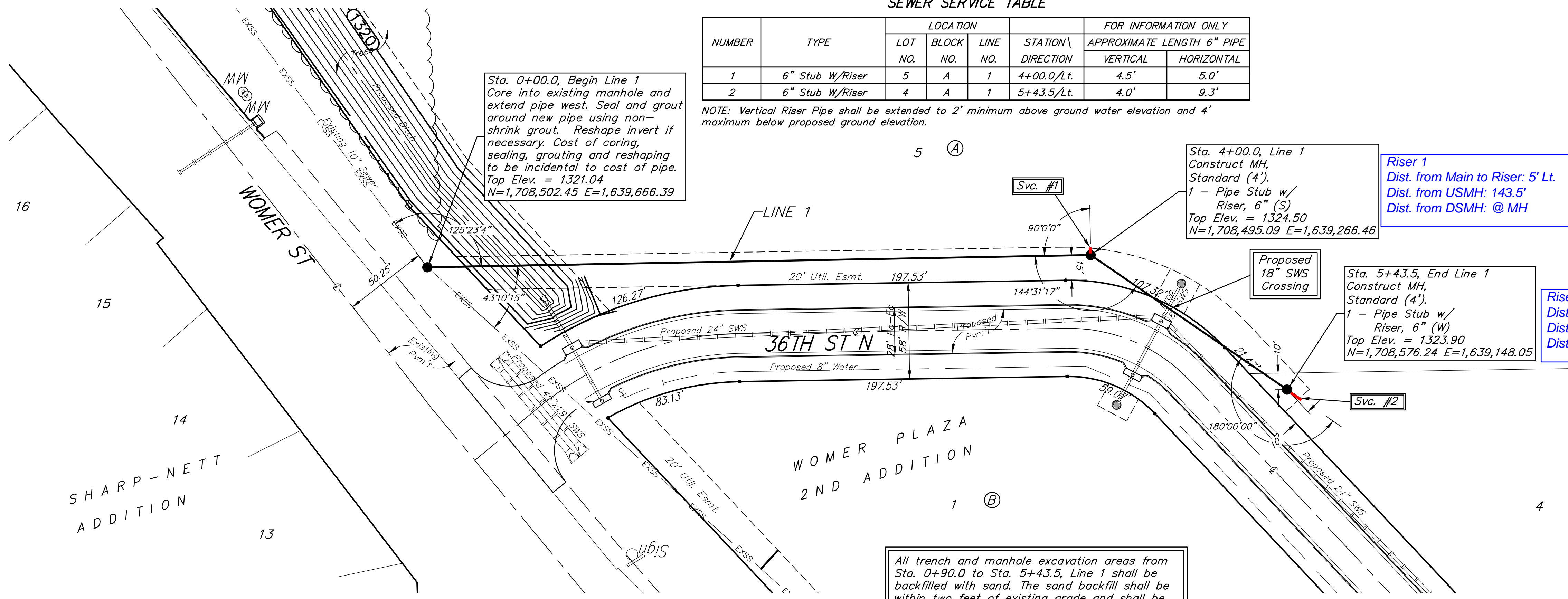
BENCHMARKS:
 BM #1: "□" South end of Womer St. median approximately 565' south of 37th St. N. Elev. = 1324.11 NAVD88

BM #2: "□" Top of curb inlet, west side of Womer St. approximately 1,400' south of 37th St. N. Elev. = 1325.82 NAVD88

SEWER SERVICE TABLE

NUMBER	TYPE	LOCATION			FOR INFORMATION ONLY	
		LOT NO.	BLOCK NO.	LINE NO.	STATION \ DIRECTION	APPROXIMATE LENGTH 6" PIPE
1	6" Stub W/Riser	5	A	1	4+00.0/Lt.	4.5' 5.0'
2	6" Stub W/Riser	4	A	1	5+43.5/Lt.	4.0' 9.3'

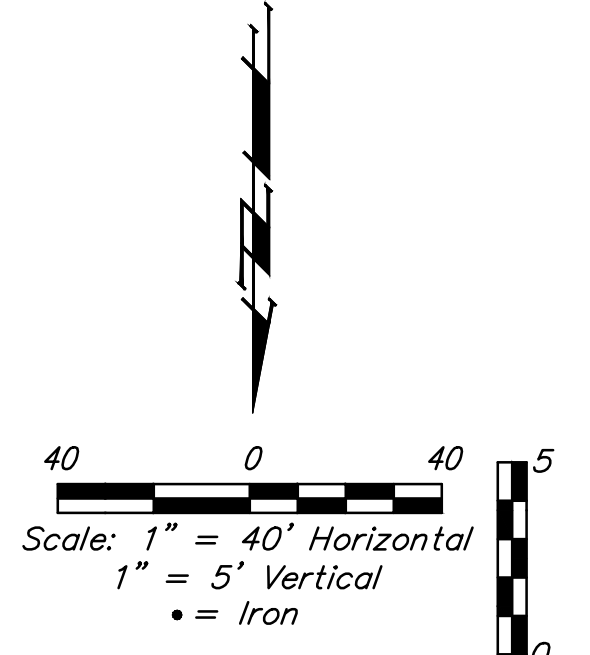
NOTE: Vertical Riser Pipe shall be extended to 2' minimum above ground water elevation and 4' maximum below proposed ground elevation.



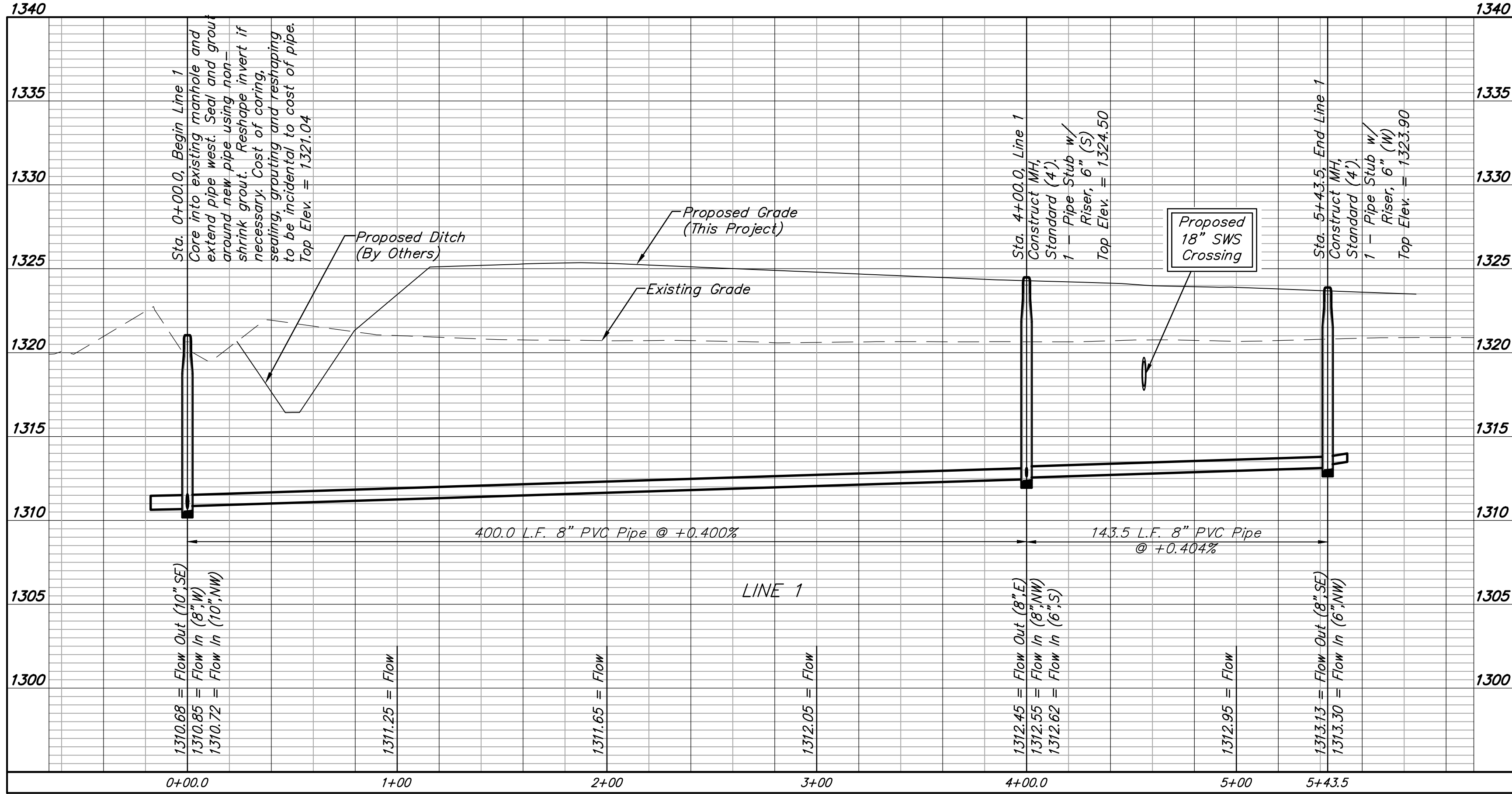
Riser 1
 Dist. from Main to Riser: 5' Lt.
 Dist. from USMH: 143.5'
 Dist. from DSMH: @ MH

Riser 2
 Dist. from Main to Riser: 9' Lt.
 Dist. from USMH: @ MH
 Dist. from DSMH: 143.5'

All trench and manhole excavation areas from Sta. 0+90.0 to Sta. 5+43.5, Line 1 shall be backfilled with sand. The sand backfill shall be within two feet of existing grade and shall be water-jetted and vibrated during backfilling. All costs shall be paid for as L.F. "Fill, Sand (Flushed & Vibrated)".

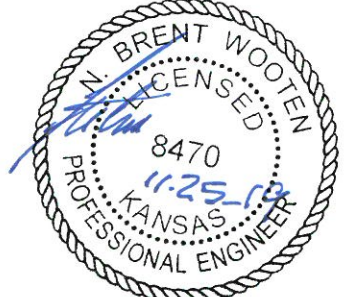


Contractor shall verify elevation and location of existing manhole prior to construction and notify Engineer of any discrepancy.



Baughman Company, P.A.
 ENGINEERING, ARCHITECTURE, PLANNING, LANDSCAPE ARCHITECTURE
 1125 N. W. 10th St., Suite 200, Ft. Lauderdale, FL 33304
 Phone: (954) 561-1111 Fax: (954) 561-1112
 www.baughman.com

WOMER PLAZA 2ND ADD.
LINE 1
 SANITARY SEWER IMPROVEMENTS



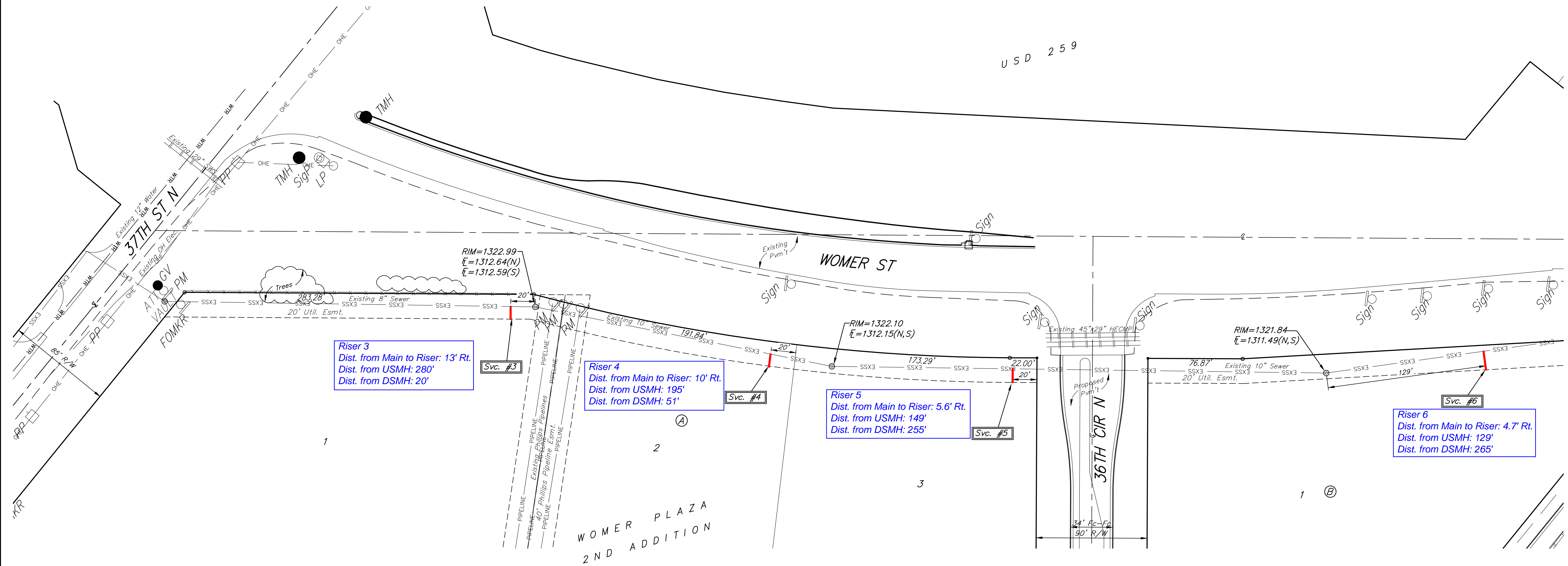
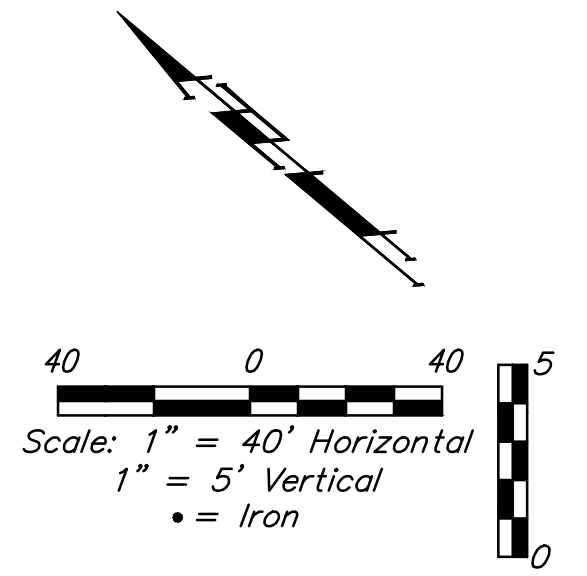
BENCHMARKS:
 BM #1: "□" South end of Womer St. median approximately 565' south of 37th St. N.
 Elev. = 1324.11 NAVD88

BM #2: "□" Top of curb inlet, west side of Womer St. approximately 1,400' south of 37th St. N.
 Elev. = 1325.82 NAVD88

SEWER SERVICE TABLE

NUMBER	TYPE	LOCATION				FOR INFORMATION ONLY	
		LOT NO.	BLOCK NO.	LINE NO.	STATION \ DIRECTION	APPROXIMATE LENGTH 6" PIPE	HORIZONTAL
3	8" X 6" Saddle Tap W/Riser	1	A	-	-	6.5'	13.0'
4	8" X 6" Saddle Tap W/Riser	2	A	-	-	6.0'	10.0'
5	8" X 6" Saddle Tap W/Riser	3	A	-	-	6.0'	5.6'
6	8" X 6" Saddle Tap W/Riser	1	B	-	-	6.5'	4.7'

NOTE: Vertical Riser Pipe shall be extended to 2' minimum above ground water elevation and 4' maximum below proposed ground elevation.



Riser 3
 Dist. from Main to Riser: 13' Rt.
 Dist. from USMH: 280'
 Dist. from DSMH: 20'

Riser 4
 Dist. from Main to Riser: 10' Rt.
 Dist. from USMH: 195'
 Dist. from DSMH: 51'

Riser 5
 Dist. from Main to Riser: 5.6' Rt.
 Dist. from USMH: 149'
 Dist. from DSMH: 255'

Riser 6
 Dist. from Main to Riser: 4.7' Rt.
 Dist. from USMH: 129'
 Dist. from DSMH: 265'

Baughman Company, P.A.
 ENGINEERING, ARCHITECTURE, PLANNING, LANDSCAPE ARCHITECTURE
 1125 W. 19th St., Suite 100, Lawrence, KS 66044
 Phone: 785.843.1111 Fax: 785.843.1112
 www.baughmancompany.com

ADDL. RISERS
 SANITARY SEWER IMPROVEMENTS

