

SANITARY SEWER EXTENSION

to serve

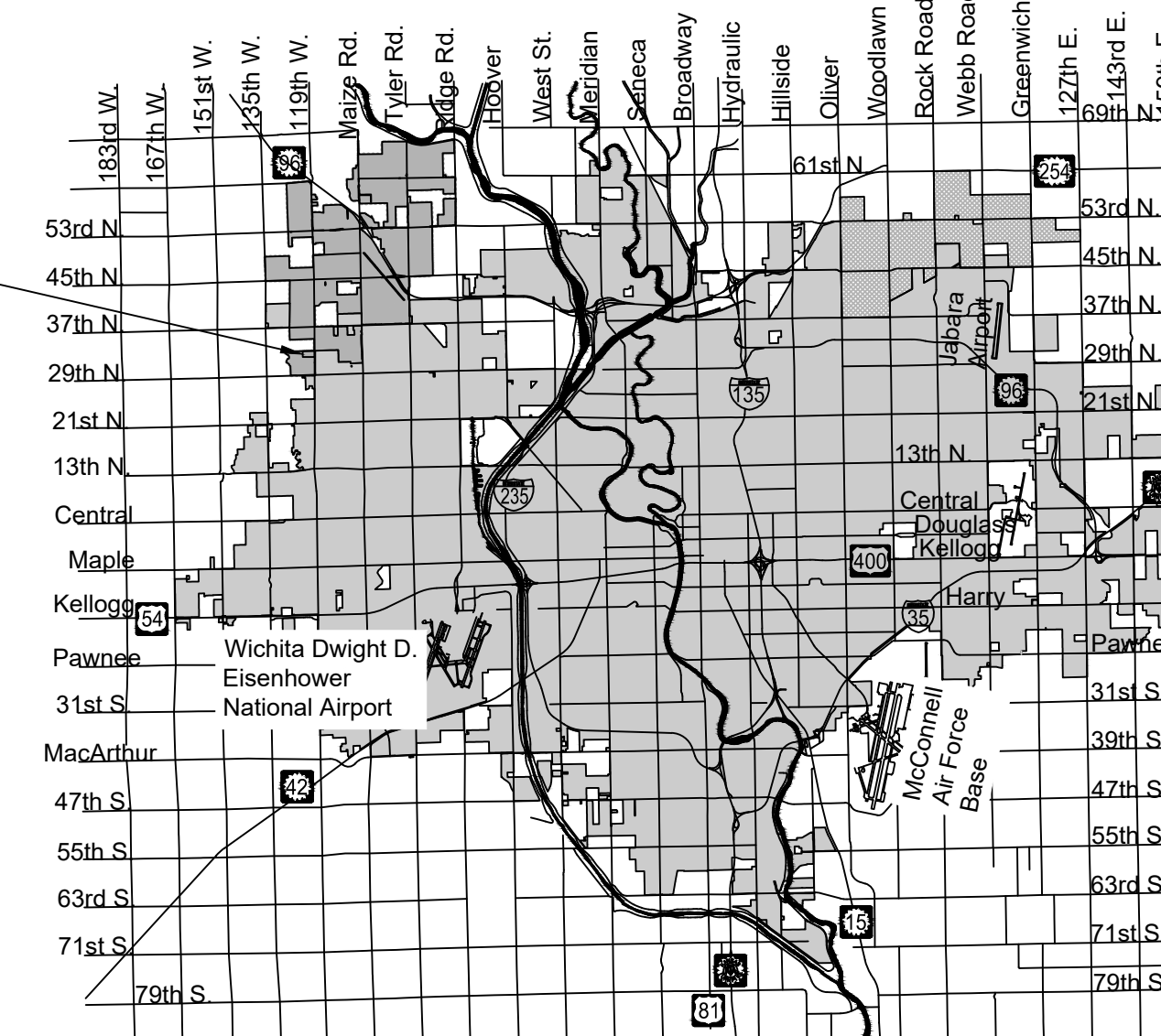
Mallard Estates, Maize Kansas CITY OF WICHITA, KANSAS

Gary Janzen, P.E. City Engineer

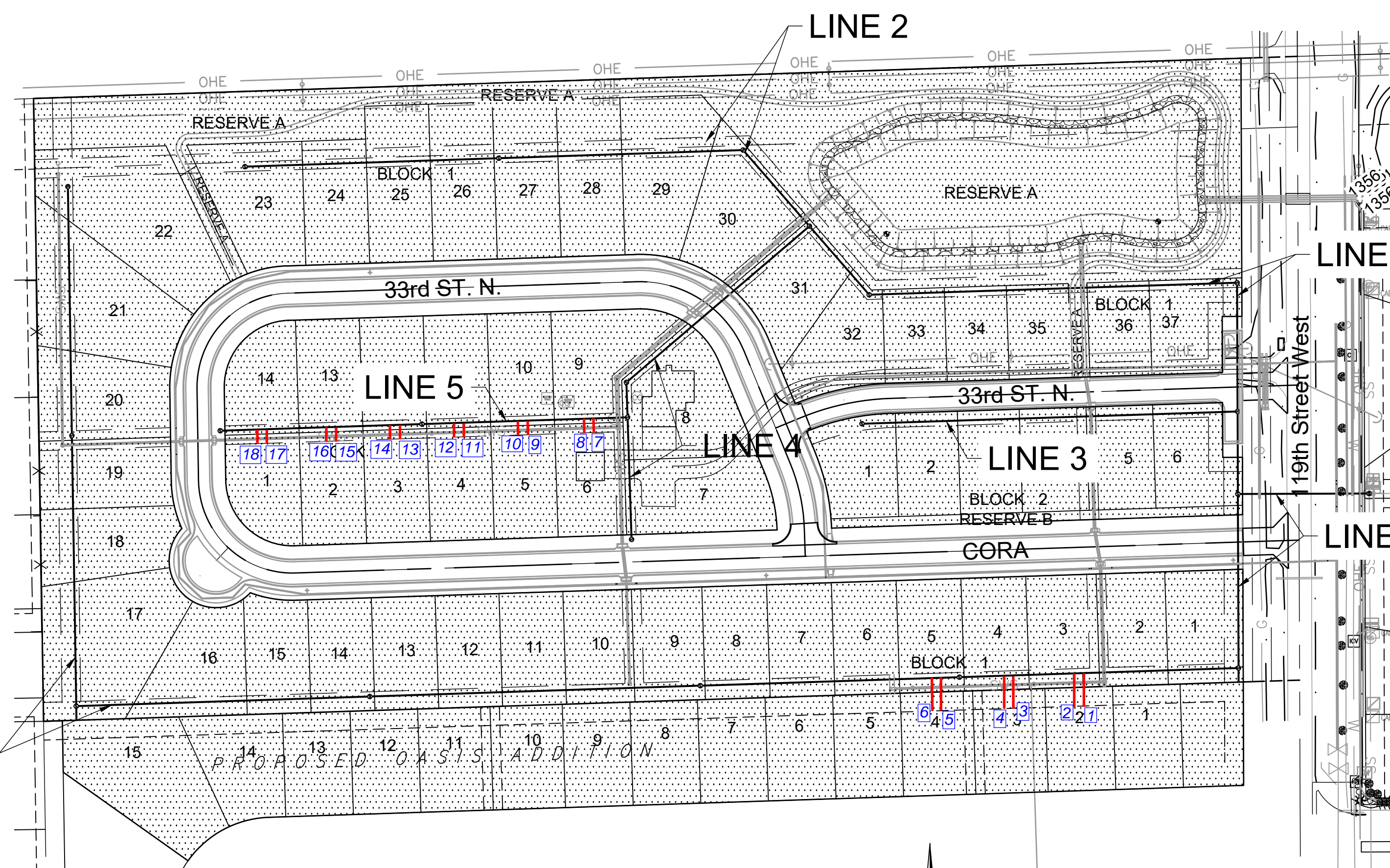
Project Number 468-2020-~~15621~~ 015621

O.C.A. NO. 810103

PROJECT
LOCATION



Vicinity Map



Sheet List Table

Sheet Number	Sheet Title
1	Coversheet
2	SS LINE 1 (1 of 3)
3	SS LINE 1 (2 of 3)
4	SS LINE 1 (3 of 3)
5	SS LINE 2 (1 of 2)
6	SS LINE 2 (2 of 2)
7	SS LINE 3
8	SS LINE 4
9	SS LINE 5
10	Pre-Cast SS MH
11	MH Frame & Cover
12	Vertical Riser
13	SS BUBBLE MAP
14	ADDITION BUBBLE MAP SS
15	EROSION CONTROL PLAN
16	SW-501
17	SW-502
18	SW-503
19	SW-504
20	SW-505
21	PLAT-SS

GENERAL NOTES:

- The Contractor shall comply with all applicable safety regulations. All construction shall be completed following current City Standard Specifications and Special Provisions.
- Contractor will be required to provide notice to utility companies a minimum of seventy-two (72) hours prior to any excavation, as follows:
Kansas One-Call 687-2470
The Contractor must notify the following in case of an emergency:
AT&T 1-800-246-8464
Black Hills Energy 1-800-694-8989
City of Wichita Water & Sewer Dept. 1-316-219-8921
City of Wichita Stormwater 1-316-268-4090
City of Wichita Traffic 1-316-268-4034
Cox Communications 1-888-249-3530
Eergy 1-800-544-4857
Kansas Gas Service 1-888-482-4950
Sedgwick County Electric COOP 1-316-644-1044
- Utility service lines, poles, etc. are to be adjusted as necessary by others prior to construction unless the plans specifically call for their adjustment by the Contractor or unless the plans specifically identify a utility to be adjusted by its owner during construction. Existing utilities and their location, as shown on the plans, represent the best information obtainable for design. The Contractor will be required to work around existing utilities within the right-of-way which do not conflict with proposed construction.
- Rubble from the removal of miscellaneous structures and excess excavation which is to be wasted shall be disposed of on sites to be provided by the Contractor. These sites shall be approved by the Engineer as to suitability, appearance and site location. Locations, in the opinion of the Engineer, that will leave an unsightly appearance will not be approved. All disposal sites must be approved by the Kansas Department of Health and Environment. Material either stockpiled or disposed of in a flood plain will require a Kansas State Board of Agriculture permit. Any material dumped in waters of the United States or wetlands is subject to U.S. Corps. of Engineers permitting regulations. Any material buried or stockpiled beyond approved construction limits will require additional archaeological investigations unless buried in a previously approved borrow location.
- Trees and shrubs in public right-of-way which are in direct conflict with proposed new construction shall be removed by the Contractor with the Engineer's approval. Trees and shrubs which are not in direct conflict with proposed new construction shall be saved and protected from damage.
- The Contractor shall give all property owners and/or tenants of developed property abutting the construction of this project a minimum of ten (10) days notice prior to start of construction.
- The Contractor shall be responsible for preserving property irons. The Contractor will be required to re-establish any property irons which are damaged or destroyed by his construction operations. Such irons shall be re-established by a licensed land surveyor in accordance with state laws.
- If traffic will be impacted by construction, a traffic control plan must be submitted and approved by the City Traffic Engineer, at traffic@wichita.gov before construction can begin. The Contractor shall be responsible for all traffic control measures to facilitate construction. All construction zone markings and signage shall conform to the latest version of the Manual on Uniform Traffic Control Devices (MUTCD) as published by the US Dept. of Transportation, Federal Highway Administration. All costs associated with construction markings and signage shall be the Contractors responsibly.
- All elevations shown are NAVD 88.
- All areas disturbed during construction that will not be under proposed pavement shall be restored to match existing conditions.
- The Contractor shall protect from damage and support existing utilities through constructions as approved by the utility owner and the Engineer at the contractors expense.
- Contractor shall limit the extent of trench openings overnight and weekends to less than 50 feet.
- All stubs and plugged pipes shall be located with green plastic tape in the same manner as risers.
- Connecting to Existing Manholes:
Prior to laying sewer lines using existing stubs in existing manholes, the Contractor shall expose and verify the elevation, grade and alignment of existing stubs and notify the Engineer of any deviation from the plans. Where connection to an existing manhole that does not have an existing stub or the stub is unusable due to elevation grade or alignment, the Contractor shall bore cut into existing manhole wall to make connection using approved water stop gasket, and reshape the existing manhole invert to provide smooth flow. The cost to connecting to existing manholes is incidental to the project.
- Contractor shall provide positive drainage away from all manhole covers.
- The Contractor shall prevent any construction debris from entering the existing sanitary sewer during construction.
- The Contractor shall be responsible for maintaining continuous flow of sewage through construction. Contractors proposed method for maintaining sewage flow shall be submitted and approved by the Sewer Maintenance Division (316-268-4073) prior to starting and by-passing of sewage flows.
- Any over excavation from manhole and/or pipe removal shall be backfilled and compacted in accordance with the Standard Specifications.
- No shrink or swell factors have been applied to the earthwork quantities shown on this project. All earthwork quantities are based on raw surface volume comparisons.
- Excess dirt generated from installation of underground utilities is to remain on site and be stockpiled on adjacent lots.
- Properties within the project may have underground irrigation systems (lawn sprinklers) which conflict with new construction. Contractor shall remove such components as needed during construction of the project, salvaging all sprinkler heads, valves and operators, and pertinent controllers/equipment to the property owner, where possible. Portions of underground irrigation systems not in conflict with new construction shall be protected from damage and shall remain in place. The Contractor shall exercise caution, through communication with the property owner, to insure that work completed as part of the project does not adversely affect the operation of existing irrigation system(s) on private property, behind the right-of-way. The Contractor is to coordinate final site restoration with the property owner, such that they are afforded the opportunity to replace the irrigation system prior to sod/seed installation. All work associated with this item will be paid for by the bid item "Irrigation System Repair".
- The existing area East of 119th Street of this project is fescue grass. After completion of construction Contractor shall restore area to previous conditions. Cost subsidiary to Site Restoration.

Benchmarks

BENCHMARK #1:
CHISELED SQUARE ON THE TOP OF CURB ON THE SOUTH CURB RETURN AT THE SOUTHEAST CORNER OF FONTANA AND PINE GROVE, ELEVATION = 1361.92 (NAVD88, G18)

BENCHMARK #2:
CHISELED SQUARE ON THE TOP OF THE SOUTH END OF A REINFORCED CONCRETE PIPE ON THE EAST SIDE OF 119TH ST. W. AT THE DRIVE ENTRANCE TO THE MAIZE WATER STATION, 35' E. & 114' N. OF THE EAST QUARTER CORNER OF SEC. 36, T26S, R2W ELEVATION = 1358.21 (NAVD88, G18)

IMPROVEMENT DISTRICT

PLAN SET REVIEWED BY GARVER
Chunhua Bohm 7/14/2020
SIGNATURE DATE

NOTE: All coordinates listed are modified NAD83 Kansas State Plane Zone South unless otherwise noted. To convert listed coordinates to NAD83 Kansas State Plane Zone South coordinates multiply the northing and easting by the project scale factor of 0.99988001. Elevation datum is NAVD88 Geoid 12B unless otherwise noted.



AUGUST 2020

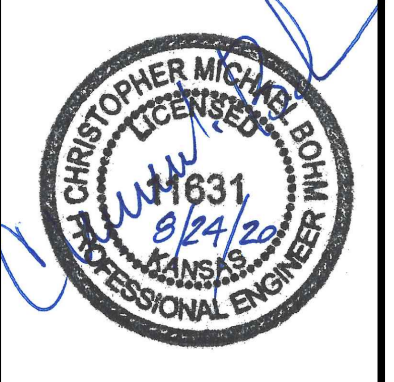
PLANS PREPARED BY





© 2020 GARVER, LLC
 THIS DOCUMENT, ALONG WITH THE IDEAS AND DESIGNS CONVEYED HEREIN, SHALL BE CONSIDERED INSTRUMENTS OF PROFESSIONAL SERVICE AND ARE PROPERTY OF GARVER, LLC. ANY USE, REPRODUCTION, OR DISTRIBUTION OF THIS DOCUMENT, ALONG WITH THE IDEAS AND DESIGN CONTAINED HEREIN, IS PROHIBITED UNLESS AUTHORIZED IN WRITING BY GARVER, LLC OR EXPLICITLY ALLOWED IN THE GOVERNING PROFESSIONAL SERVICES AGREEMENT FOR THIS WORK.

8535 E. 21st St. N.
 Suite 130
 Wichita, KS 67206
 (316) 264-8008



REV.	DATE	DESCRIPTION	BY

CITY OF WICHITA
 WICHITA, KANSAS
 MALLARD ESTATES
 MAIZE, KANSAS
 SANITARY SEWER PLANS

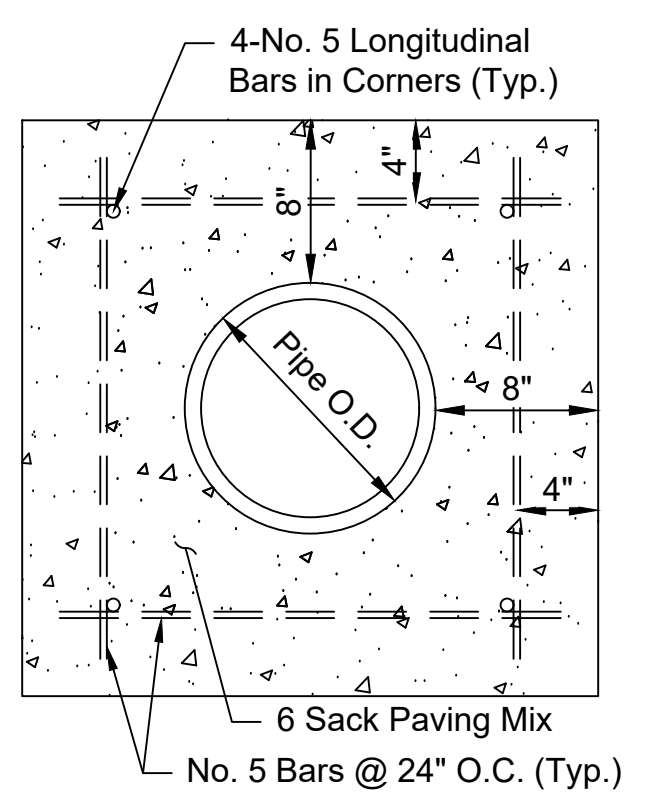
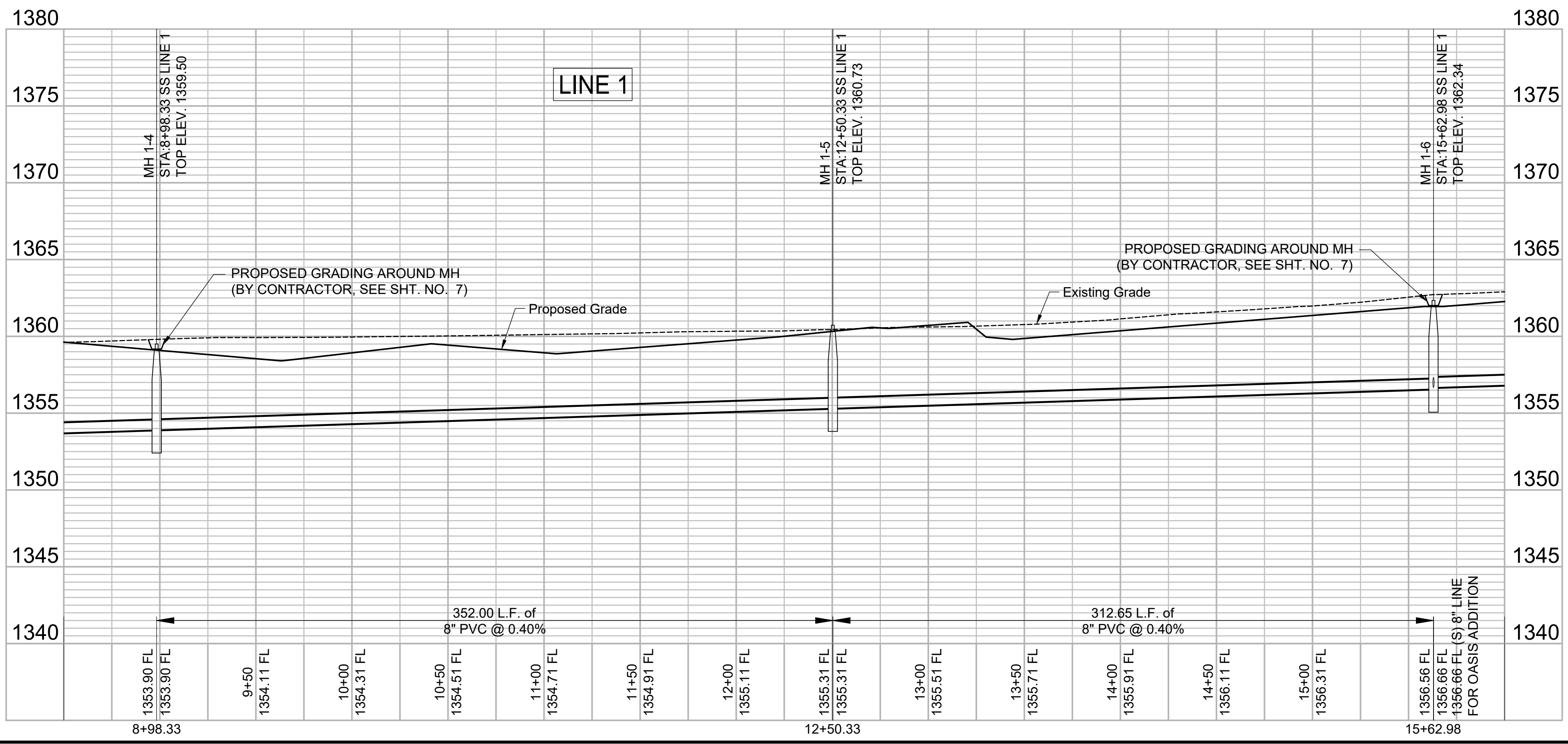
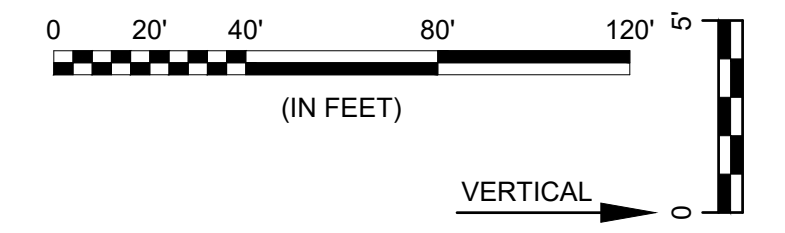
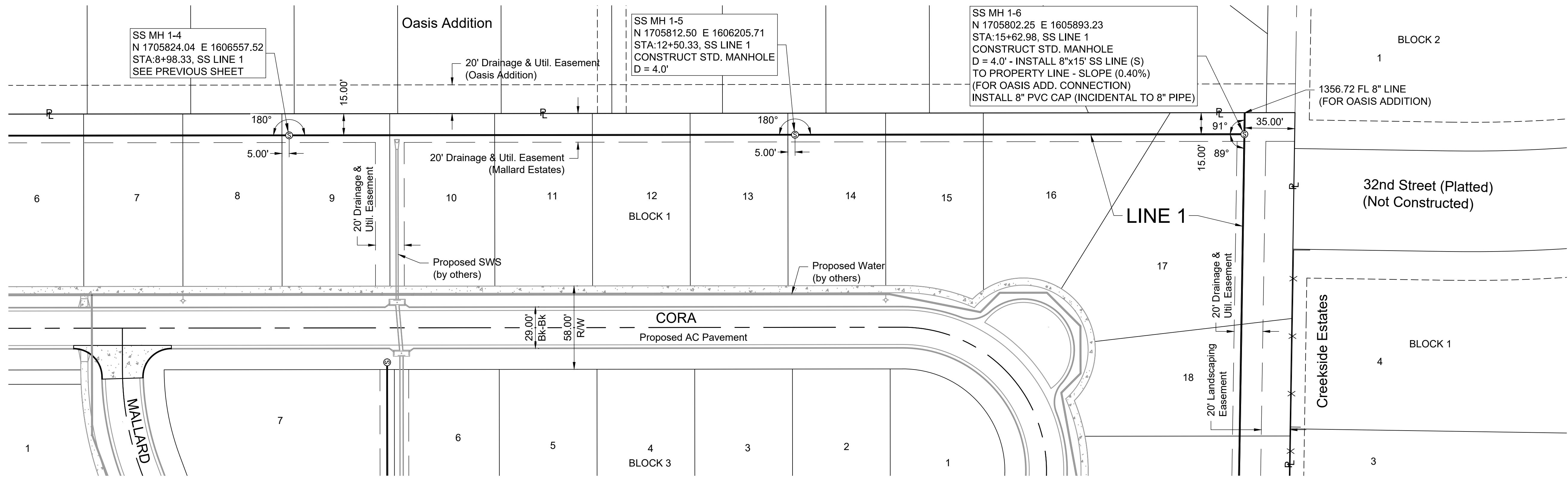
SS LINE 1
 (2 of 3)

JOB NO.: 20T41152
 DATE: AUGUST 2020
 DESIGNED BY: CMB
 DRAWN BY: DRS

BAR IS ONE INCH ON ORIGINAL DRAWING
 IF NOT ONE INCH ON THIS SHEET, ADJUST SCALES ACCORDINGLY.

DRAWING NUMBER

SHEET NUMBER **3** OF **21**



CONCRETE ENCASEMENT DETAIL

File: L:\2020\20T41152 - Mallard Estates Engineering\Drawings\C3D\SS SHEETS\SS LINE 1 - (2).dwg Last Save: 8/25/2020 12:58 PM Last saved by: DRS\andrich
 Last plotted by: Standrich, Darryl R. Plot Style: --- Plot Scale: 1:2.5849 Plot Date: 8/25/2020 2:02 PM Plotter Used: None



© 2020 GARVER, LLC
 THIS DOCUMENT, ALONG WITH THE IDEAS AND DESIGNS CONVEYED HEREIN, SHALL BE CONSIDERED INSTRUMENTS OF PROFESSIONAL SERVICE AND ARE PROPERTY OF GARVER, LLC. ANY USE, REPRODUCTION, OR DISTRIBUTION OF THIS DOCUMENT, ALONG WITH THE IDEAS AND DESIGN CONTAINED HEREIN, IS PROHIBITED UNLESS AUTHORIZED IN WRITING BY GARVER, LLC OR EXPLICITLY ALLOWED IN THE GOVERNING PROFESSIONAL SERVICES AGREEMENT FOR THIS WORK.

8535 E. 21st St. N.
 Suite 130
 Wichita, KS 67206
 (316) 264-8008



REV.	DATE	DESCRIPTION	BY

CITY OF WICHITA
 WICHITA, KANSAS
 MALLARD ESTATES
 MAIZE, KANSAS
 SANITARY SEWER PLANS

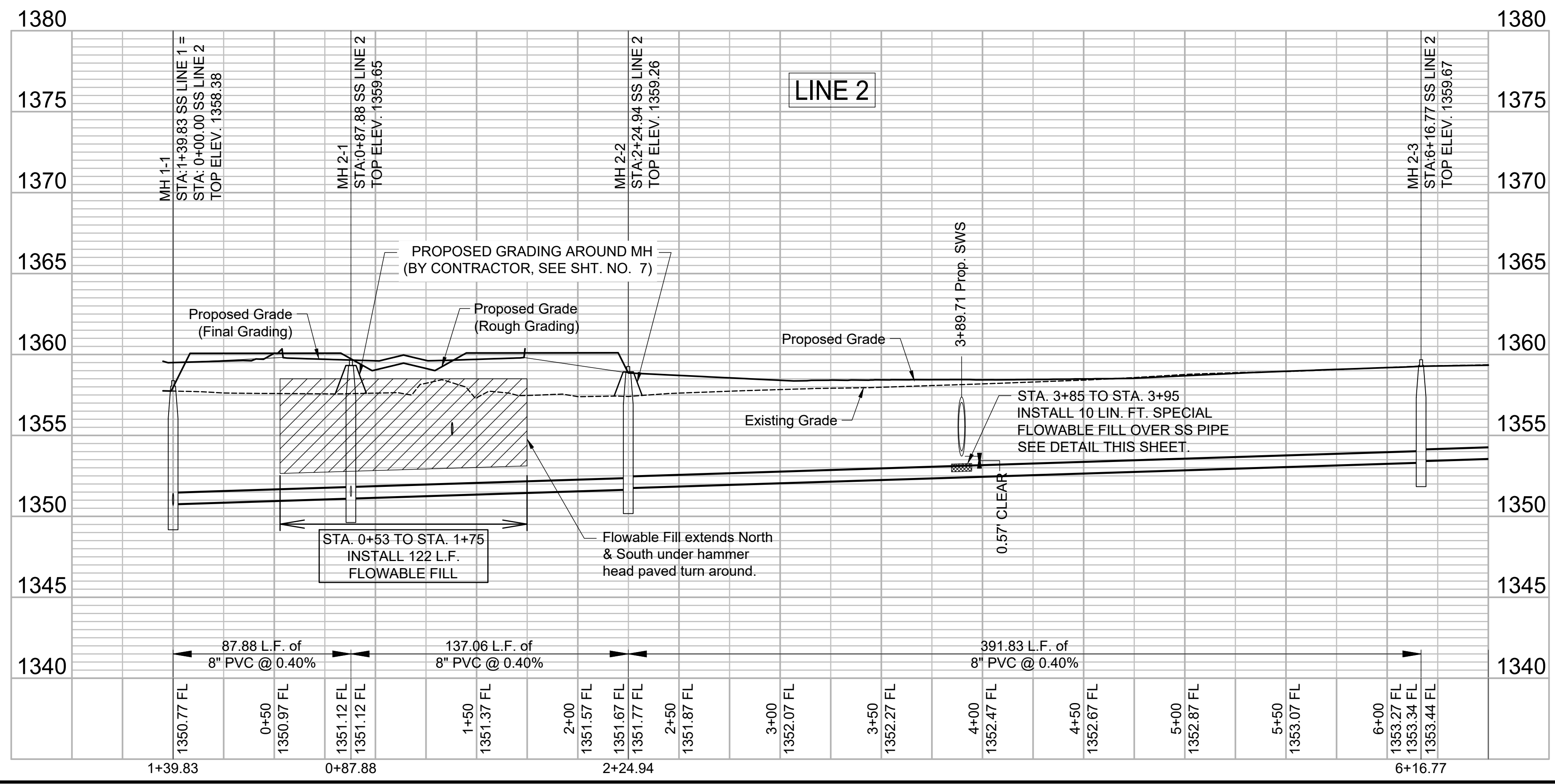
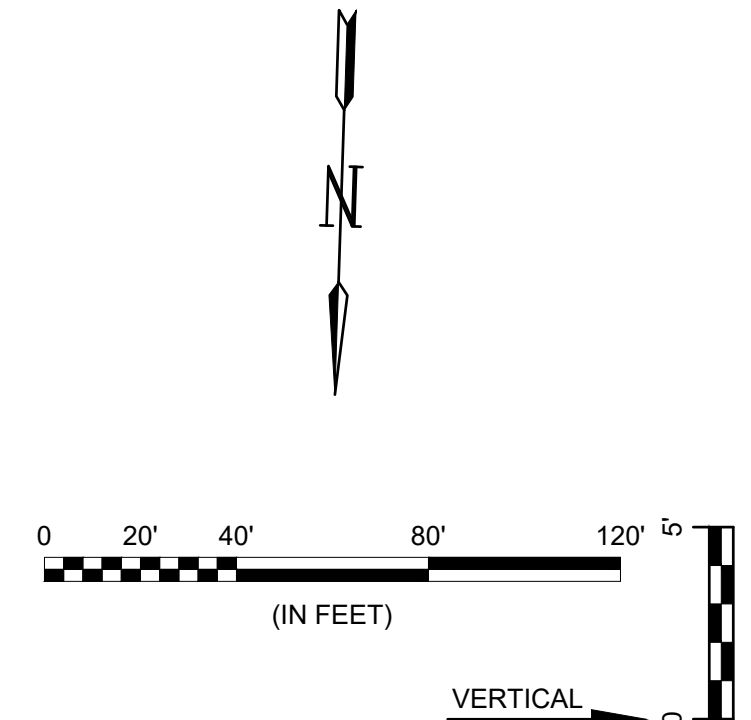
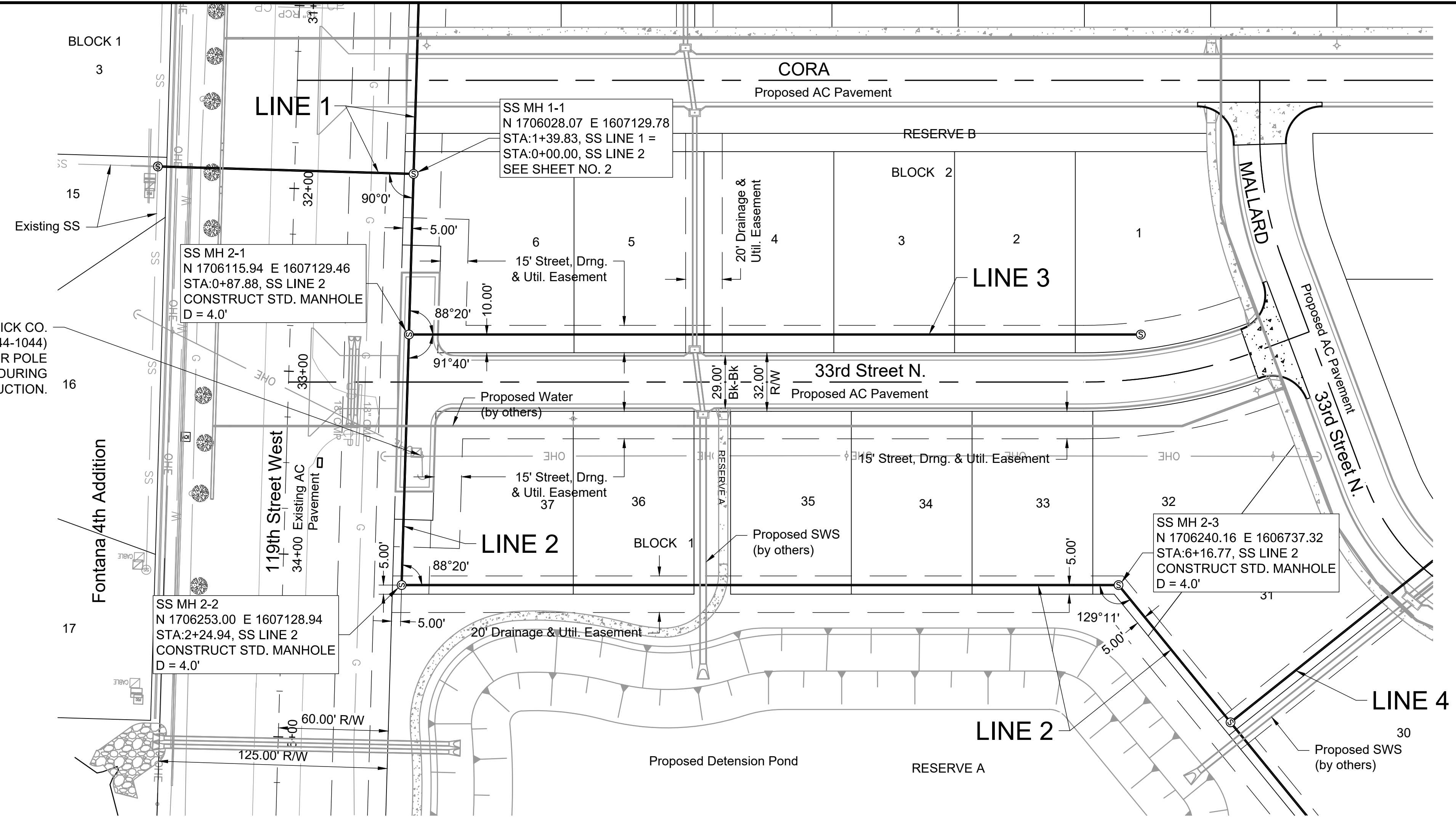
SS LINE 2
 (1 of 2)

JOB NO.: 20T41152
 DATE: AUGUST 2020
 DESIGNED BY: CMB
 DRAWN BY: DRS

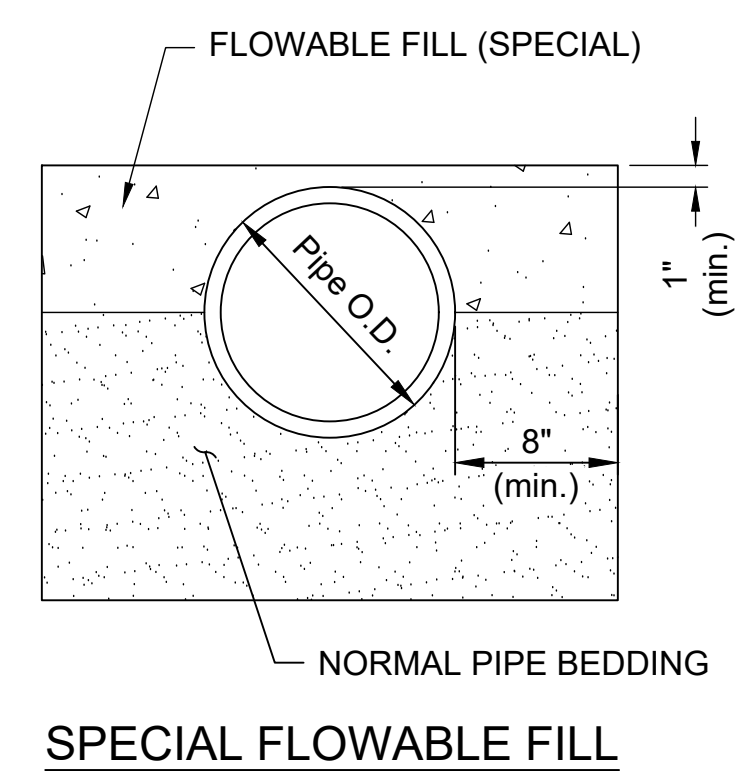
BAR IS ONE INCH ON ORIGINAL DRAWING
 IF NOT ONE INCH ON THIS SHEET, ADJUST SCALES ACCORDINGLY.

DRAWING NUMBER

SHEET NUMBER **5** OF **21**



NOTE: SPECIAL FLOWABLE FILL SHALL BE BID AND PAID FOR USING THE BID ITEM FOR "FLOWABLE FILL, L.F.)

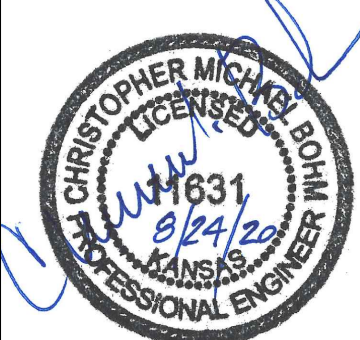


File: L:\2020\20T41152 - Mallard Estates Engineering\Drawings\C3D\SS SHEETS\SS LINE 2 - (1).dwg Last Save: 8/25/2020 1:32 PM Last saved by: DRStandrich
 Last plotted by: Standrich, Daryl R. Plot Style: --- Plot Scale: 1:2.5849 Plot Date: 8/25/2020 2:03 PM Plotter used: None



© 2020 GARVER, LLC
 THIS DOCUMENT, ALONG WITH THE IDEAS AND DESIGNS CONVEYED HEREIN, SHALL BE CONSIDERED INSTRUMENTS OF PROFESSIONAL SERVICE AND ARE PROPERTY OF GARVER, LLC. ANY USE, REPRODUCTION, OR DISTRIBUTION OF THIS DOCUMENT, ALONG WITH THE IDEAS AND DESIGN CONTAINED HEREIN, IS PROHIBITED UNLESS AUTHORIZED IN WRITING BY GARVER, LLC OR EXPLICITLY ALLOWED IN THE GOVERNING PROFESSIONAL SERVICES AGREEMENT FOR THIS WORK.

8535 E. 21st St. N.
 Suite 130
 Wichita, KS 67206
 (316) 264-8008



REV.	DATE	DESCRIPTION	BY



CITY OF WICHITA
 WICHITA, KANSAS
 MALLARD ESTATES
 MAIZE, KANSAS
 SANITARY SEWER PLANS

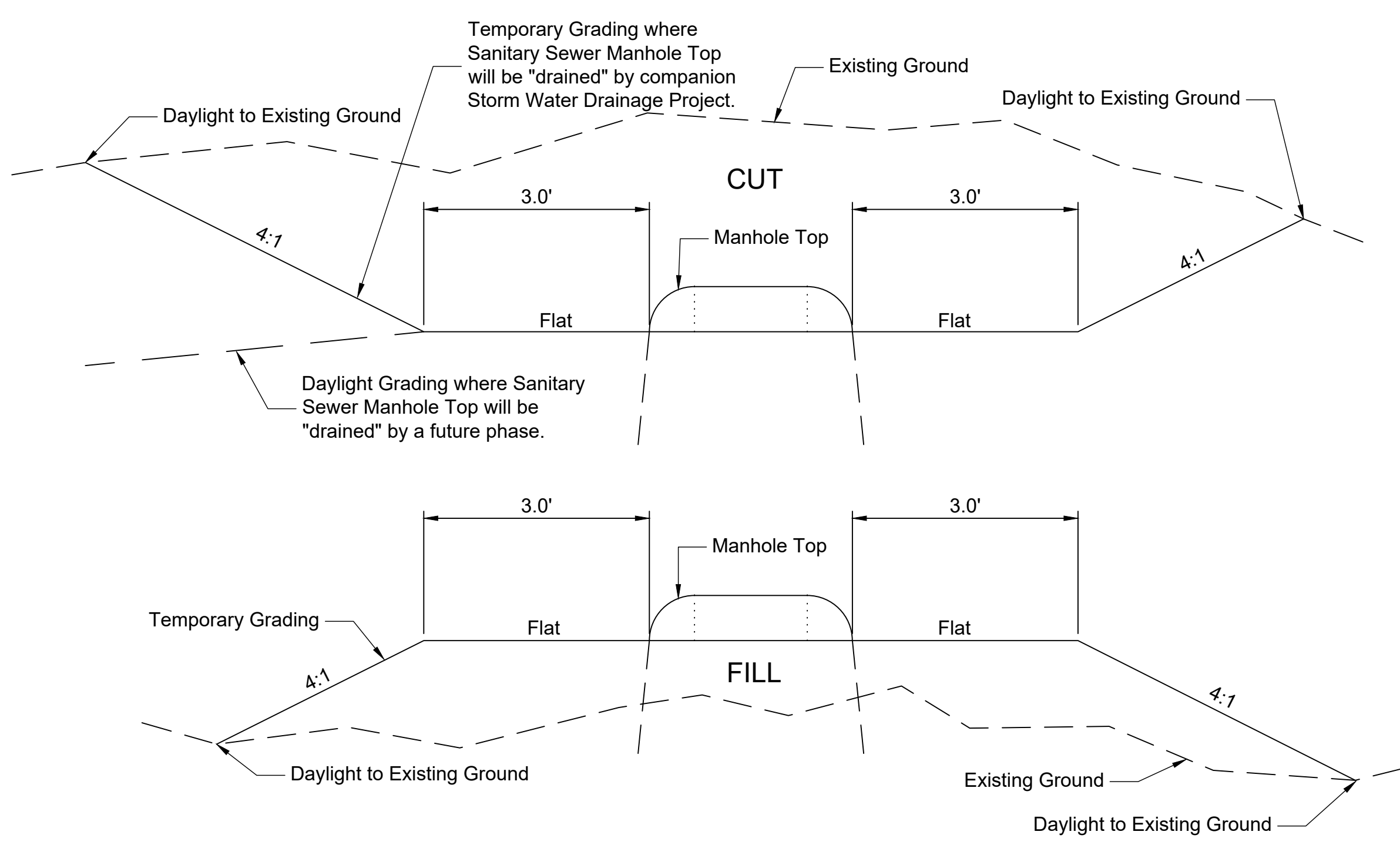
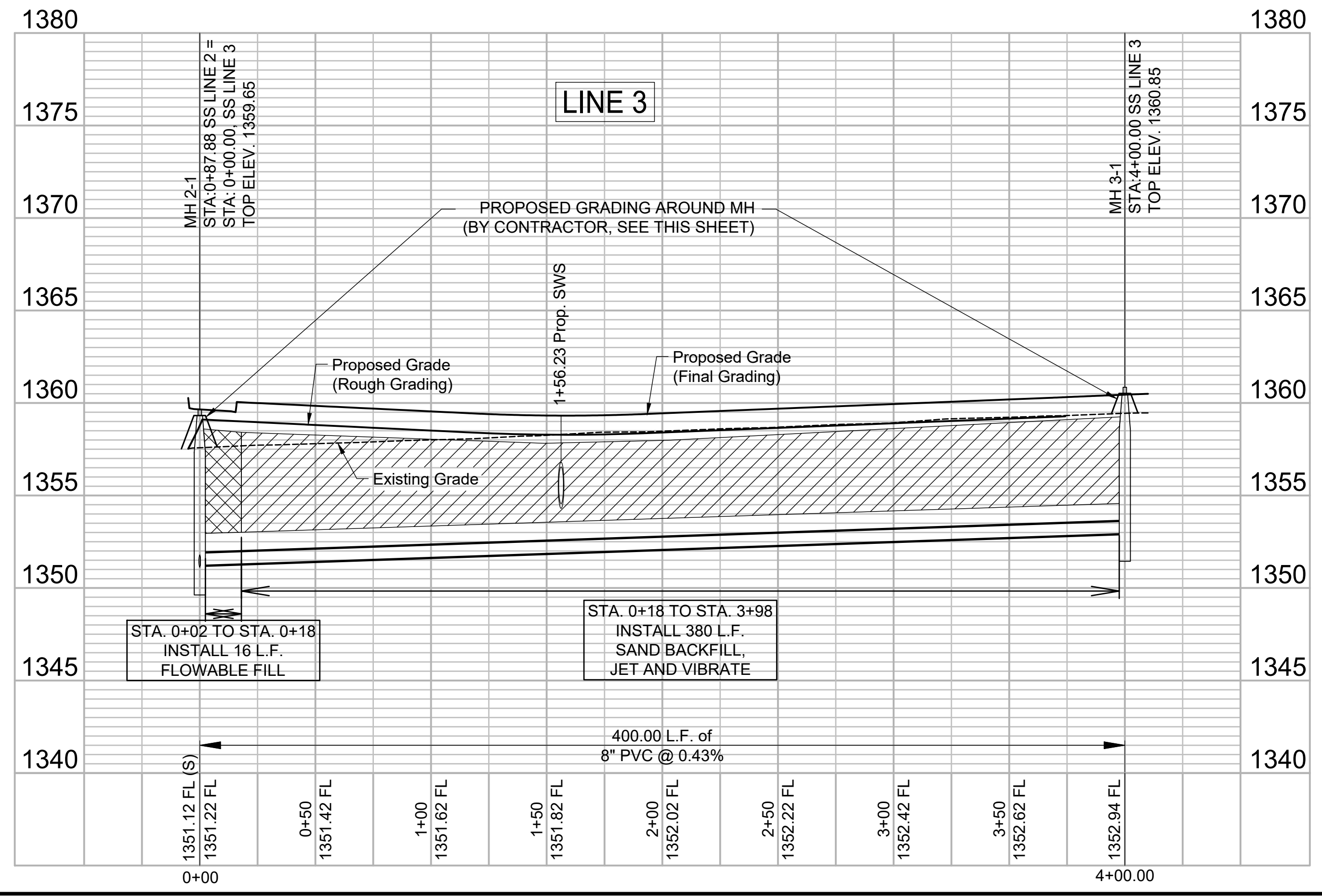
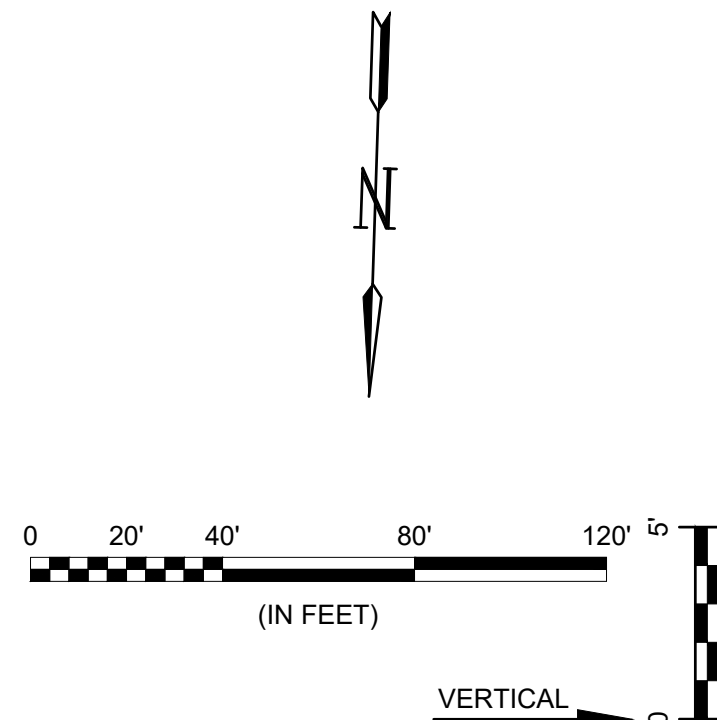
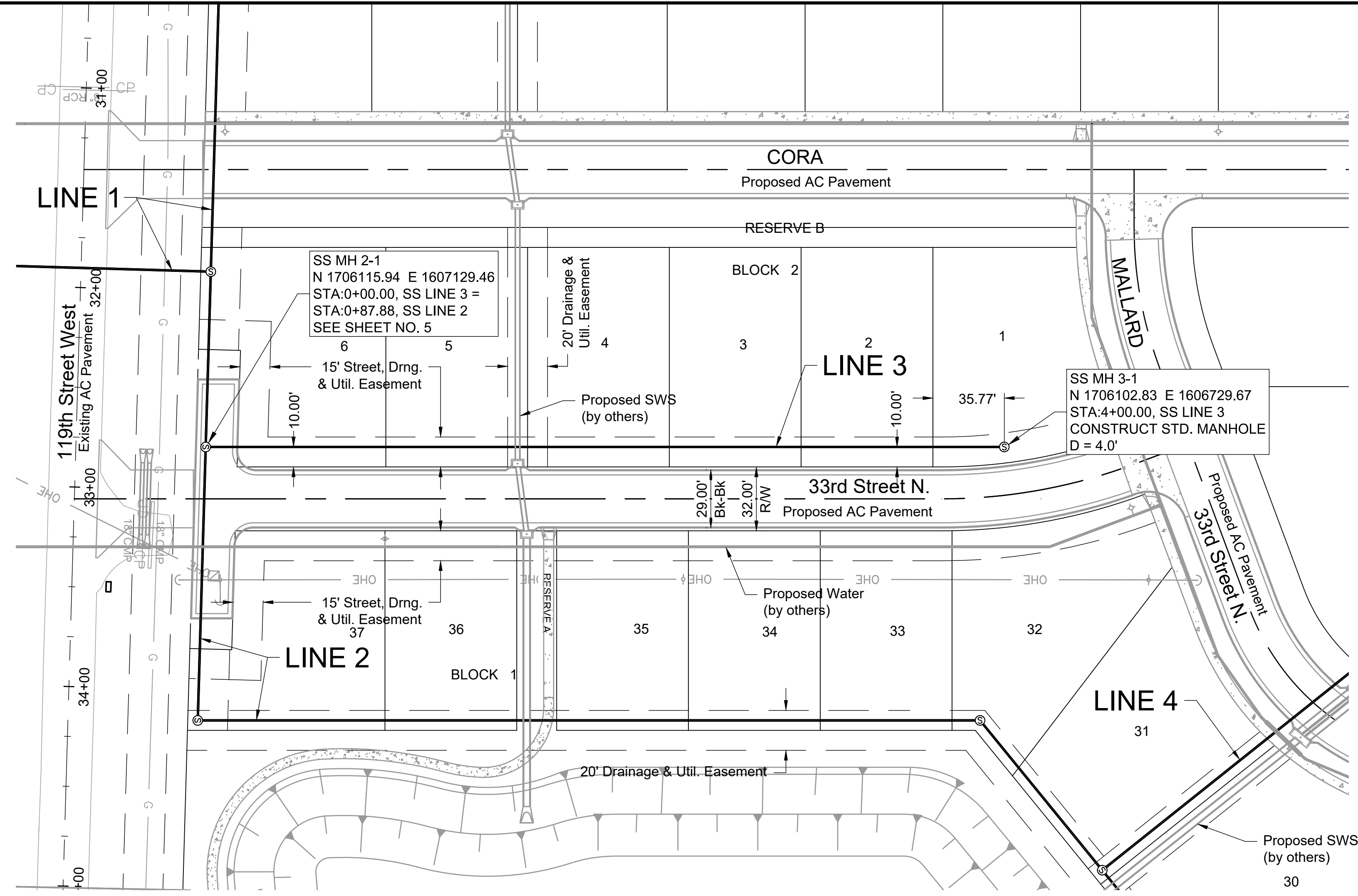
SS LINE 3

JOB NO.: 20T41152
 DATE: AUGUST 2020
 DESIGNED BY: CMB
 DRAWN BY: DRS

BAR IS ONE INCH ON ORIGINAL DRAWING
 IF NOT ONE INCH ON THIS SHEET, ADJUST SCALES ACCORDINGLY.

DRAWING NUMBER

SHEET NUMBER **7** OF **21**

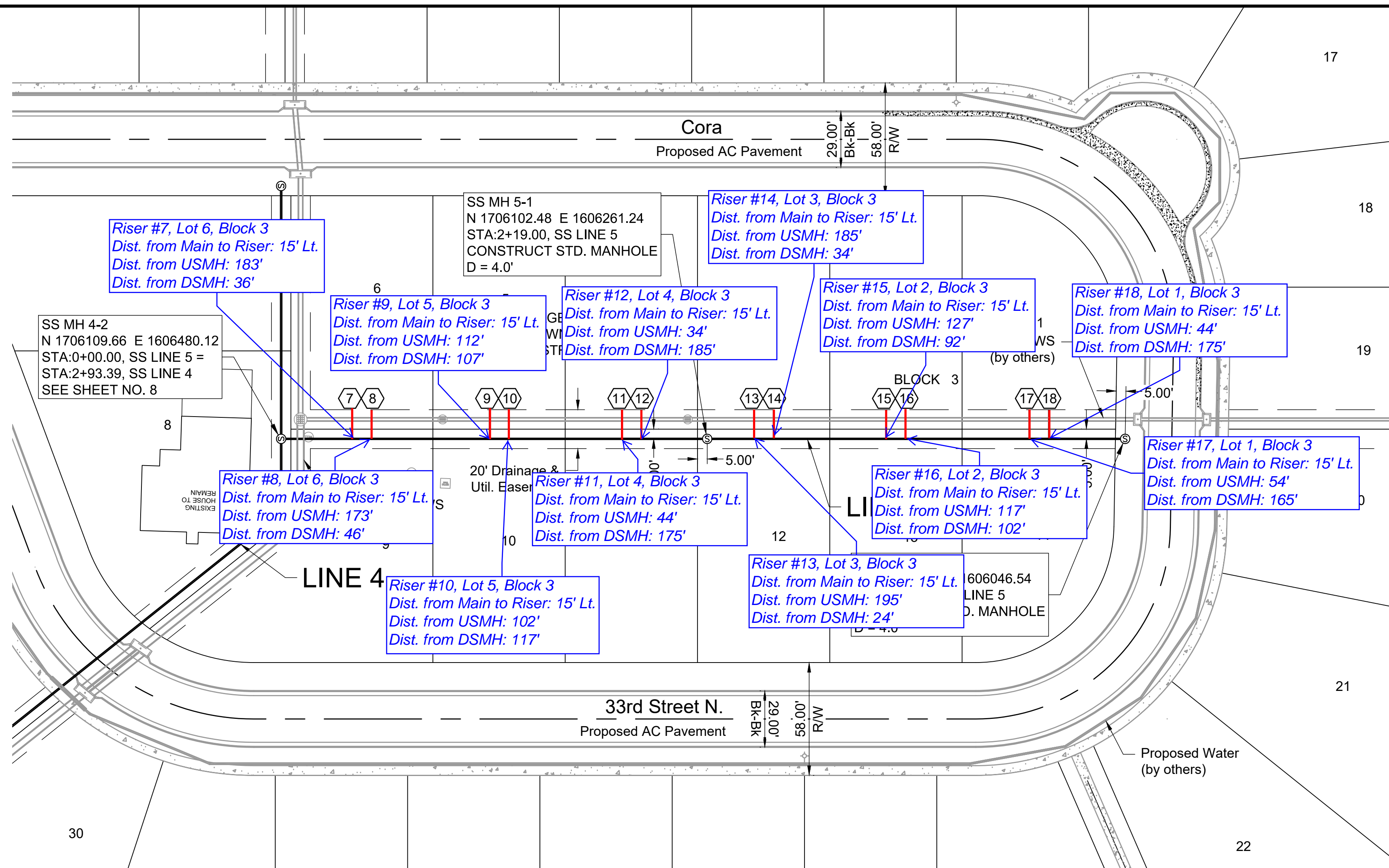


Note:
 The cost for Temporary Grading around Manholes is subsidiary to the bid item "Standard MH, Each"

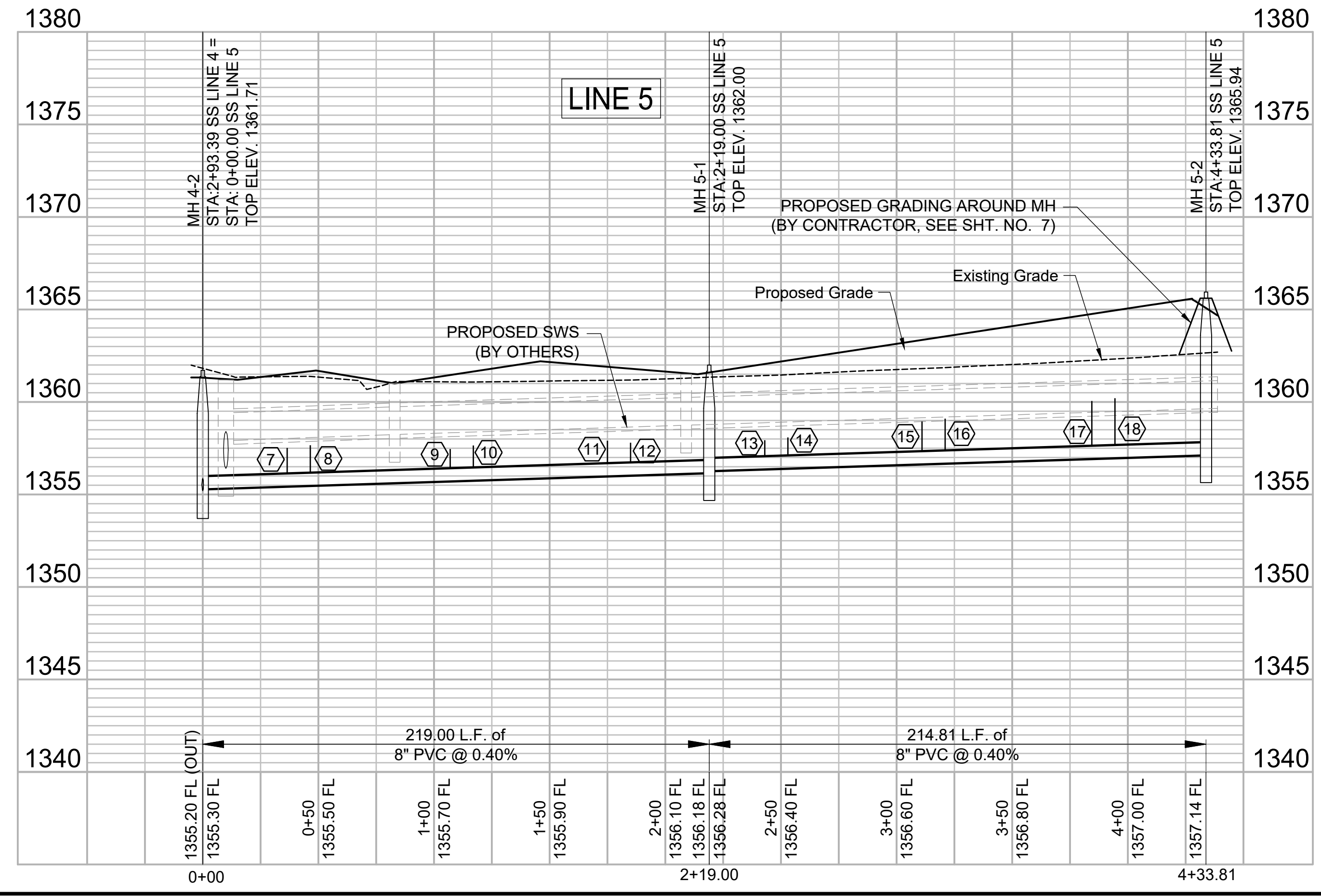
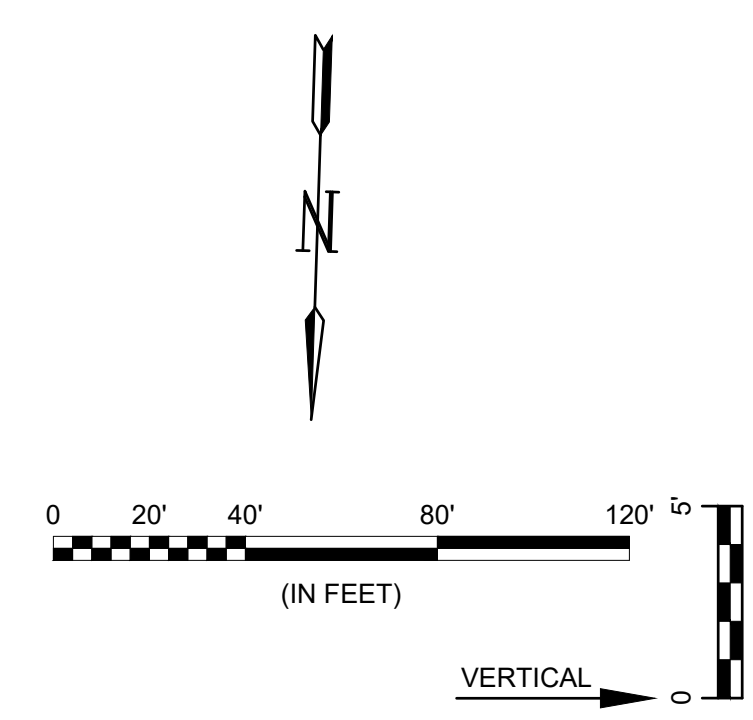
TYPICAL SECTION FOR TEMPORARY GRADING AROUND MANHOLES
 Not to Scale

File: L:\2020\20T41152 - Mallard Estates Engineering\Drawings\C3D\SS SHEETS\SS LINE 3.dwg Last Save: 8/25/2020 1:38 PM Last saved by: DRStandrich
 Last plotted by: Standrich, Darryl R. Plot Style: --- Plot Scale: 1:2.5849 Plot Date: 8/25/2020 2:05 PM Plotter Used: None

File: L:\2020\20T41152 - Mallard Estates Engineering\Drawings\C3D\SS SHEETS\SS LINE 5.dwg Last Save: 8/25/2020 1:42 PM Last saved by: DRStandrich
 Last plotted by: Standrich, Darryl R. Plot Style: --- Plot Scale: 1:2.5849 Plot Date: 8/25/2020 2:06 PM Plotter Used: None

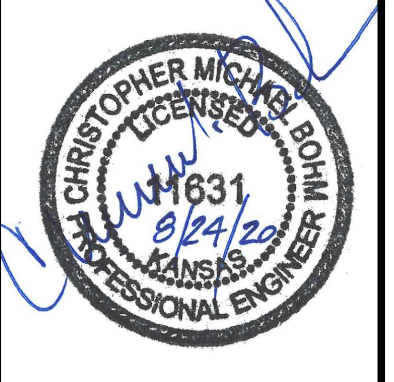


SEWER SEVICE RISER TABLE							
NUMBER	TYPE	SERVING			STATION/DIRECTION	FOR INFORMATION ONLY	
		LOT NO.	BLOCK NO.	LINE NO.		APPROX. LENGTH 4" PIPE	
						VERTICAL	HORIZONTAL
7	8"X4" Tee	6	3	5	0+36 Left	1.4	15.0
8	8"X4" Tee	6	3	5	0+46 Left	1.5	15.0
9	8"X4" Tee	5	3	5	1+07 Left	1.0	15.0
10	8"X4" Tee	5	3	5	1+17 Left	1.2	15.0
11	8"X4" Tee	4	3	5	1+75 Left	1.0	15.0
12	8"X4" Tee	4	3	5	1+85 Left	1.2	15.0
13	8"X4" Tee	3	3	5	2+43 Left	0.8	15.0
14	8"X4" Tee	3	3	5	2+53 Left	0.9	15.0
15	8"X4" Tee	2	3	5	3+11 Left	1.6	15.0
16	8"X4" Tee	2	3	5	3+21 Left	1.7	15.0
17	8"X4" Tee	1	3	5	3+84 Left	2.4	15.0
18	8"X4" Tee	1	3	5	3+94 Left	2.5	15.0



© 2020 GARVER, LLC
 THIS DOCUMENT, ALONG WITH THE IDEAS AND DESIGNS CONVEYED HEREIN, SHALL BE CONSIDERED INSTRUMENTS OF PROFESSIONAL SERVICE AND ARE PROPERTY OF GARVER, LLC. ANY USE, REPRODUCTION, OR DISTRIBUTION OF THIS DOCUMENT, ALONG WITH THE IDEAS AND DESIGN CONTAINED HEREIN, IS PROHIBITED UNLESS AUTHORIZED IN WRITING BY GARVER, LLC OR EXPLICITLY ALLOWED IN THE GOVERNING PROFESSIONAL SERVICES AGREEMENT FOR THIS WORK.

8535 E. 21st St. N.
 Suite 130
 Wichita, KS 67206
 (316) 264-8008



REV.	DATE	DESCRIPTION	BY

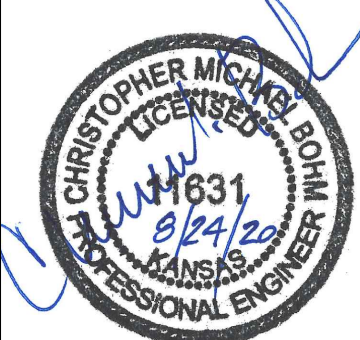
CITY OF WICHITA
 WICHITA, KANSAS
 MALLARD ESTATES
 MAIZE, KANSAS
 SANITARY SEWER PLANS

SS LINE 5
 JOB NO.: 20T41152
 DATE: AUGUST 2020
 DESIGNED BY: CMB
 DRAWN BY: DRS
 BAR IS ONE INCH ON ORIGINAL DRAWING
 0 1" IF NOT ONE INCH ON THIS SHEET, ADJUST SCALES ACCORDINGLY.
 DRAWING NUMBER
 SHEET NUMBER **9** OF **21**



© 2020 GARVER, LLC
 THIS DOCUMENT, ALONG WITH THE IDEAS AND DESIGNS CONVEYED HEREIN, SHALL BE CONSIDERED INSTRUMENTS OF PROFESSIONAL SERVICE AND ARE PROPERTY OF GARVER, LLC. ANY USE, REPRODUCTION, OR DISTRIBUTION OF THIS DOCUMENT, ALONG WITH THE IDEAS AND DESIGN CONTAINED HEREIN, IS PROHIBITED UNLESS AUTHORIZED IN WRITING BY GARVER, LLC OR EXPLICITLY ALLOWED IN THE GOVERNING PROFESSIONAL SERVICES AGREEMENT FOR THIS WORK.

8535 E. 21st St. N.
 Suite 130
 Wichita, KS 67206
 (316) 264-8008



REV.	DATE	DESCRIPTION	BY

CITY OF WICHITA
 WICHITA, KANSAS
 MALLARD ESTATES
 MAIZE, KANSAS
 SANITARY SEWER PLANS

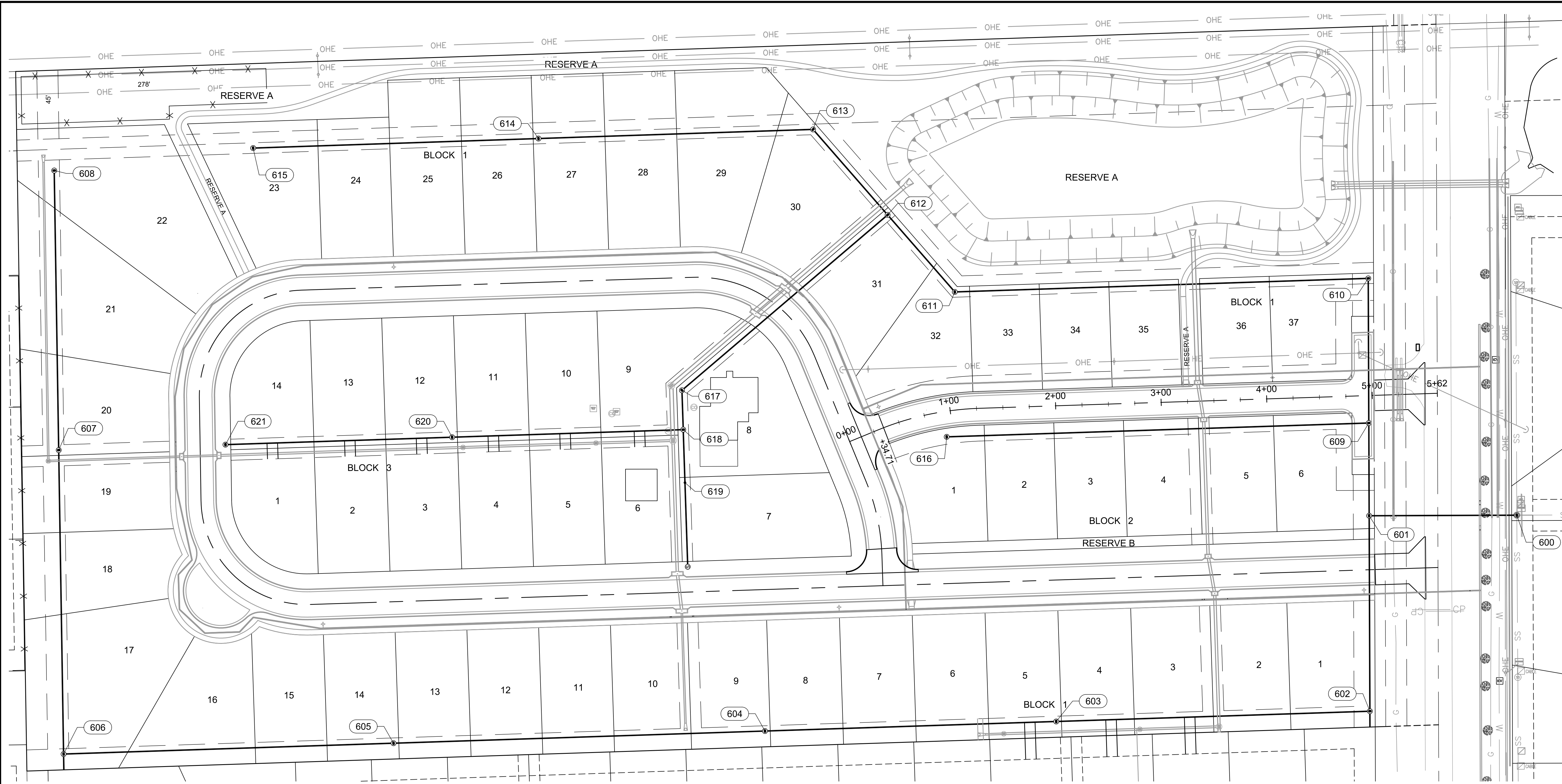
SS BUBBLE MAP

JOB NO.: 20T41152
 DATE: AUGUST 2020
 DESIGNED BY: CMB
 DRAWN BY: DRS

BAR IS ONE INCH ON ORIGINAL DRAWING
 0 1" IF NOT ONE INCH ON THIS SHEET, ADJUST SCALES ACCORDINGLY.

DRAWING NUMBER

SHEET NUMBER **13 OF 21**



Point Table			
Point #	Northing	Easting	Description
600	1706028.59	1607269.62	MH EXIST
601	1706028.07	1607129.78	MH 1-1
602	1705842.83	1607130.47	MH 1-2
603	1705833.09	1606833.37	MH 1-3
604	1705824.04	1606557.52	MH 1-4
605	1705812.50	1606205.71	MH 1-5
606	1705802.25	1605893.23	MH 1-6
607	1706090.26	1605888.60	MH 1-7
608	1706355.21	1605884.35	MH 1-8
609	1706115.94	1607129.46	MH 2-1
610	1706253.00	1607128.94	MH 2-2

Point Table			
Point #	Northing	Easting	Description
611	1706240.16	1606737.32	MH 2-3
612	1706313.17	1606673.70	MH 2-4
613	1706394.18	1606603.11	MH 2-5
614	1706385.51	1606343.00	MH 2-6
615	1706376.50	1606072.75	MH 2-7
616	1706102.83	1606729.67	MH 3-1
617	1706146.93	1606478.90	MH 4-1
618	1706109.66	1606480.12	MH 4-2
619	1706059.44	1606481.76	MH 4-3
620	1706102.48	1606261.24	MH 5-1
621	1706095.44	1606046.54	MH 5-2

File: L:\2020\20T41152 - Mallard Estates Engineering\Drawings\C3D\BUBBLE MAPS.dwg Last Save: 8/25/2020 1:56 PM Last saved by: DRS\andrich
 Last plotted by: Standrich, Daryl R. Plot Style: --- Plot Scale: 1:2.5849 Plot Date: 8/25/2020 2:07 PM Plotter used: None



© 2020 GARVER, LLC
 THIS DOCUMENT, ALONG WITH THE IDEAS AND DESIGNS CONVEYED HEREIN, SHALL BE CONSIDERED INSTRUMENTS OF PROFESSIONAL SERVICE AND ARE PROPERTY OF GARVER, LLC. ANY USE, REPRODUCTION, OR DISTRIBUTION OF THIS DOCUMENT, ALONG WITH THE IDEAS AND DESIGN CONTAINED HEREIN, IS PROHIBITED UNLESS AUTHORIZED IN WRITING BY GARVER, LLC OR EXPLICITLY ALLOWED IN THE GOVERNING PROFESSIONAL SERVICES AGREEMENT FOR THIS WORK.

8535 E. 21st St. N.
 Suite 130
 Wichita, KS 67206
 (316) 264-8008



REV.	DATE	DESCRIPTION	BY



CITY OF WICHITA
 WICHITA, KANSAS
 MALLARD ESTATES
 MAIZE, KANSAS
 SANITARY SEWER PLANS

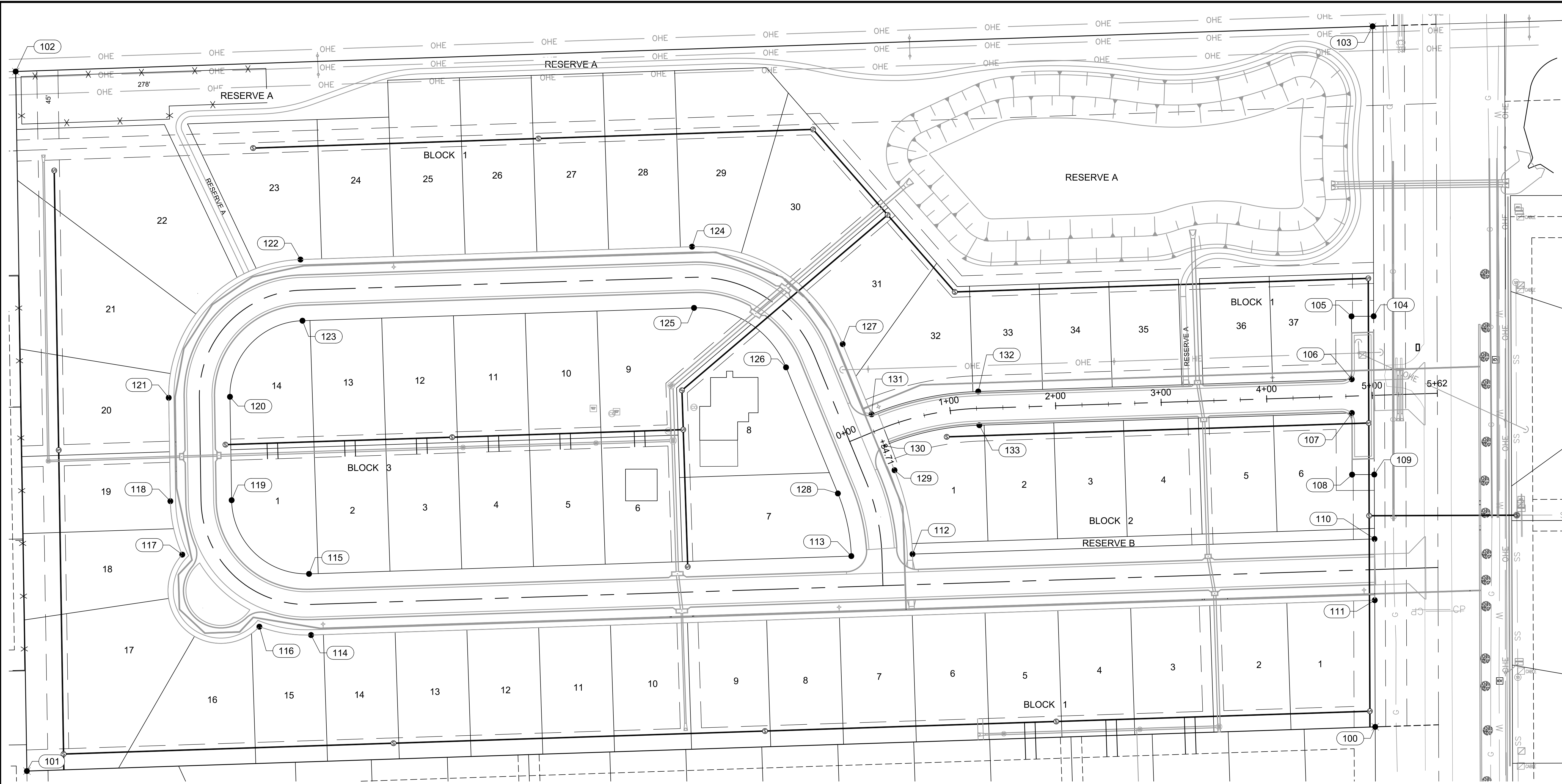
ADDITION
 BUBBLE MAP
 SS

JOB NO.: 20T41152
 DATE: AUGUST 2020
 DESIGNED BY: CMB
 DRAWN BY: DRS

BAR IS ONE INCH ON ORIGINAL DRAWING
 0 1"
 IF NOT ONE INCH ON THIS SHEET, ADJUST SCALES ACCORDINGLY.

DRAWING NUMBER

SHEET NUMBER 14 OF 21



Point #	Northing	Easting	Description
100	1705827.99	1607135.53	ADDITION CORNER
101	1705786.11	1605858.48	ADDITION CORNER
102	1706449.05	1605847.84	ADDITION CORNER
103	1706491.88	1607133.05	ADDITION CORNER
104	1706217.12	1607134.08	BLOCK CORNER
105	1706217.04	1607113.08	BLOCK CORNER
106	1706157.44	1607113.30	BLOCK CORNER
107	1706125.42	1607113.42	BLOCK CORNER
108	1706067.04	1607113.64	BLOCK CORNER
109	1706067.12	1607134.64	BLOCK CORNER

Point #	Northing	Easting	Description
110	1706006.06	1607134.87	BLOCK CORNER
111	1705948.04	1607135.08	BLOCK CORNER
112	1705991.71	1606697.29	BLOCK CORNER
113	1705989.81	1606639.32	BLOCK CORNER
114	1705915.00	1606127.60	PC BLOCK CORNER
115	1705972.97	1606125.70	PC BLOCK CORNER
116	1705922.92	1606078.67	BLOCK CORNER
117	1705991.23	1606005.63	BLOCK CORNER
118	1706041.86	1605994.39	PT BLOCK CORNER
119	1706042.79	1606052.38	PT BLOCK CORNER

Point #	Northing	Easting	Description
120	1706140.79	1606050.81	PC BLOCK CORNER
121	1706139.86	1605992.82	PC BLOCK CORNER
122	1706270.86	1606117.57	PT BLOCK CORNER
123	1706212.89	1606119.47	PT BLOCK CORNER
124	1706283.02	1606488.44	PC BLOCK CORNER
125	1706225.05	1606490.34	PC BLOCK CORNER
126	1706168.68	1606577.50	PT BLOCK CORNER
127	1706190.72	1606631.15	PT BLOCK CORNER
128	1706049.18	1606626.59	PC BLOCK CORNER
129	1706071.22	1606680.24	PC BLOCK CORNER

Point #	Northing	Easting	Description
130	1706094.57	1606670.65	BLOCK CORNER
131	1706124.17	1606658.49	BLOCK CORNER
132	1706145.83	1606759.52	PT BLOCK CORNER
133	1706113.85	1606760.57	PT BLOCK CORNER

File: L:\2020\20T41152 - Mallard Estates Engineering\Drawings\C3D\BUBBLE MAPS.dwg Last Save: 8/25/2020 1:56 PM Last saved by: DRS\standrich
 Last plotted by: Standrich, Daryl R Plot Date: 8/25/2020 2:08 PM Plotter used: None