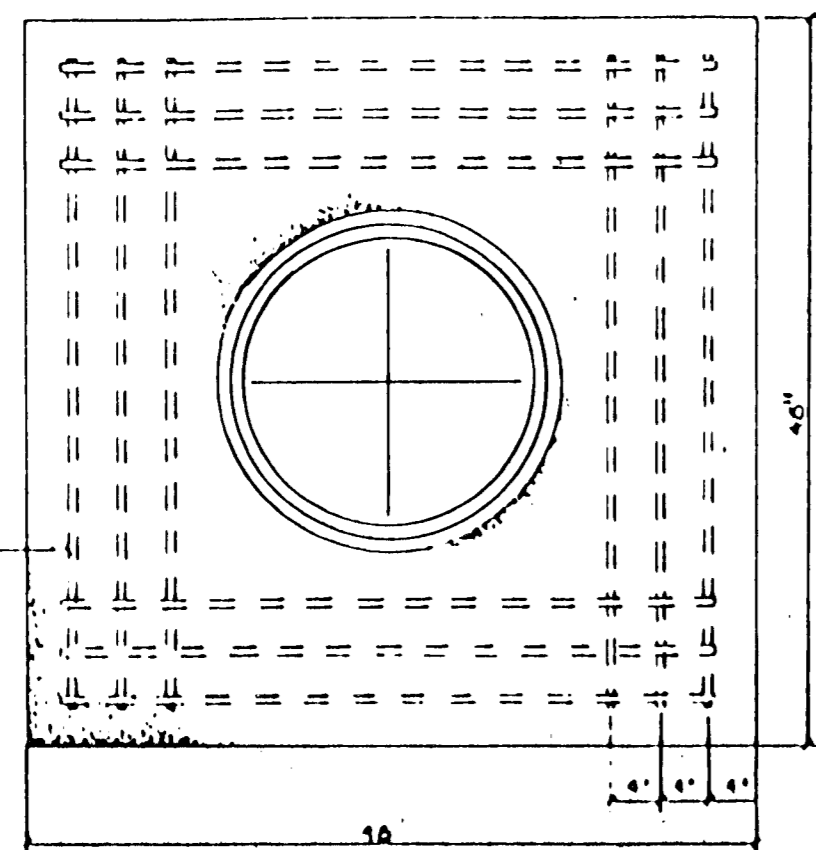
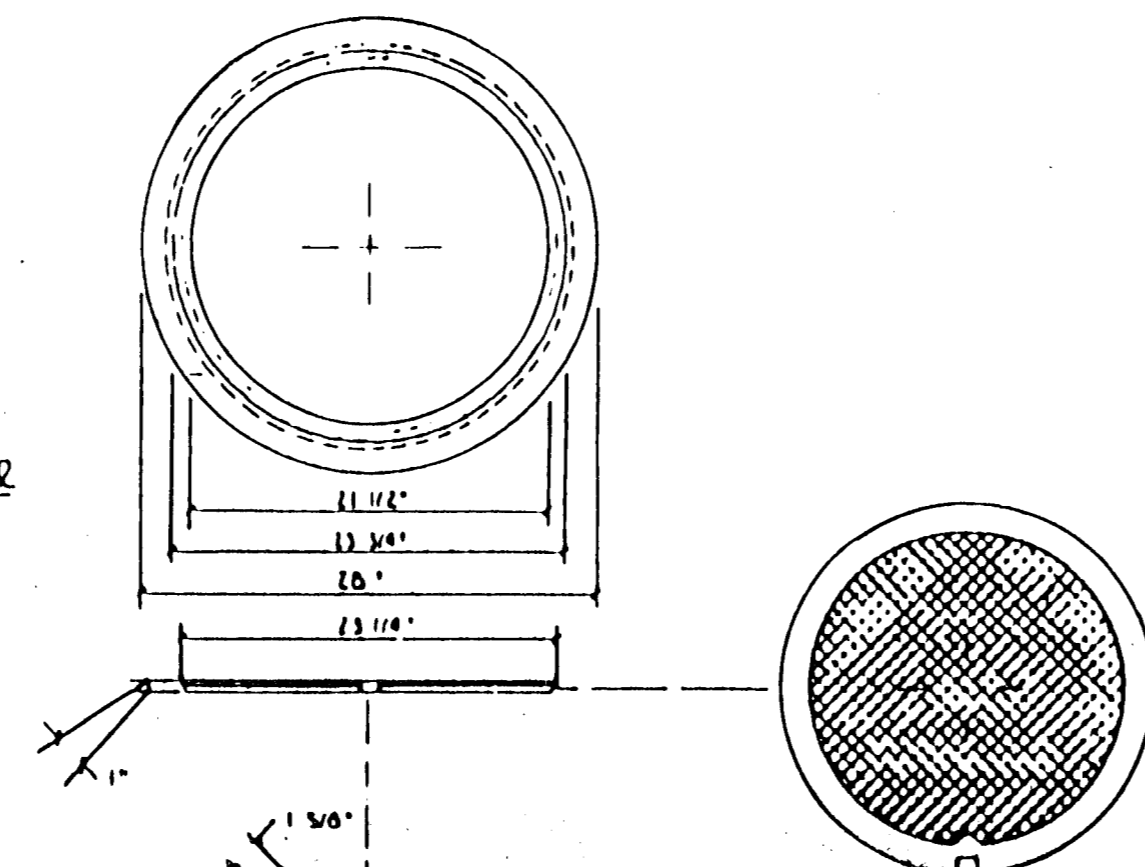


SERVICE BOX CONSTRUCTION / INSTALLATION DETAILS

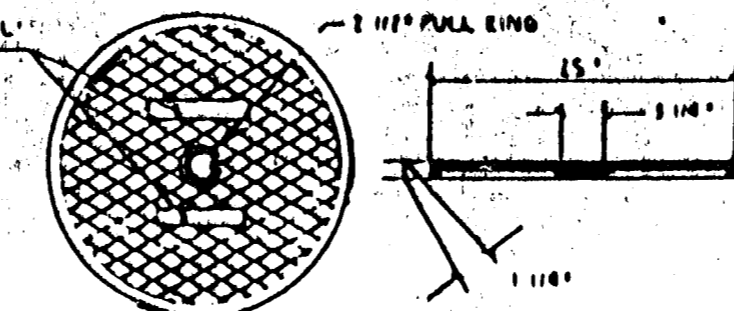
STD. CONC. SERVICE BOX
(48" x 48" x 54" BOX)
6" CAP



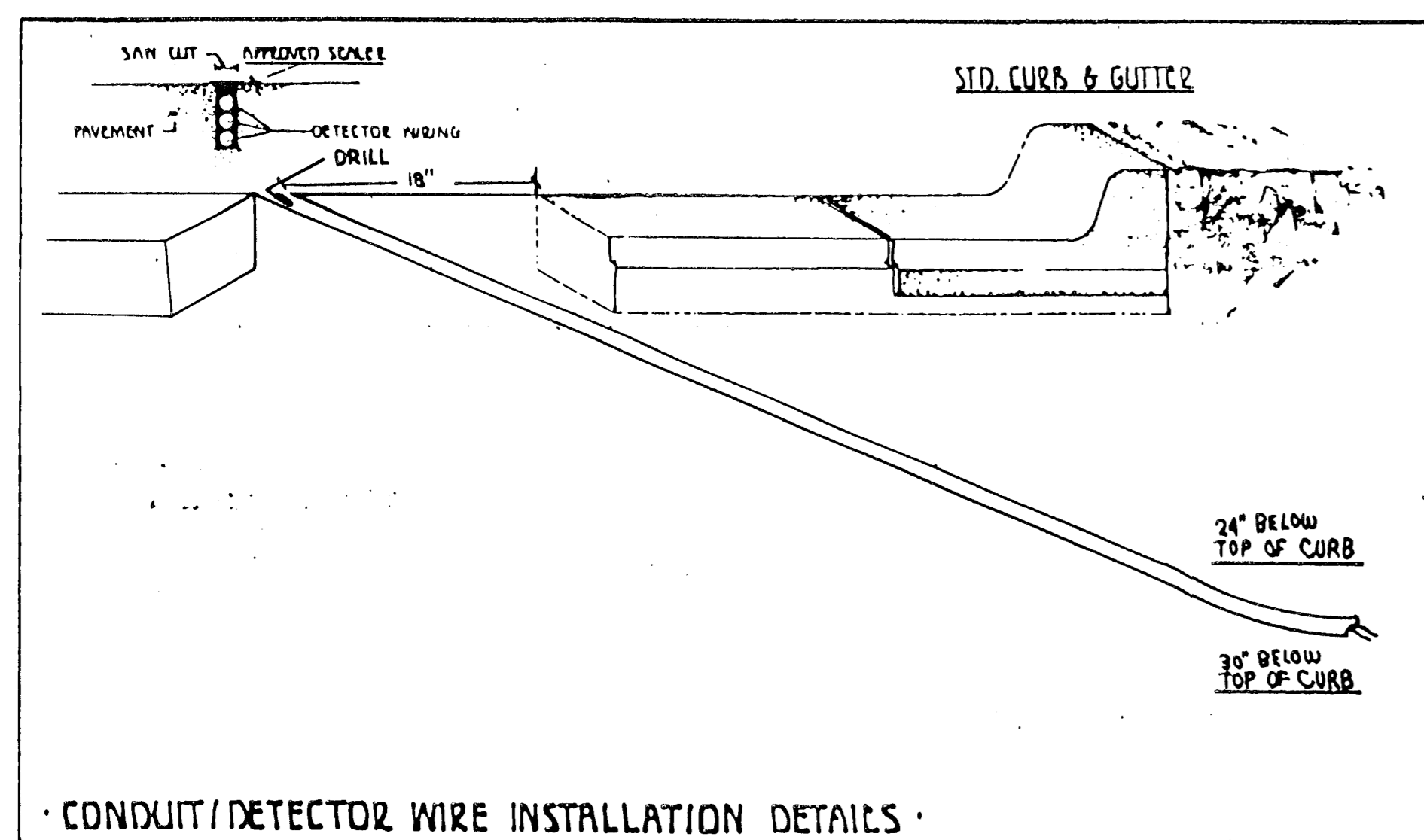
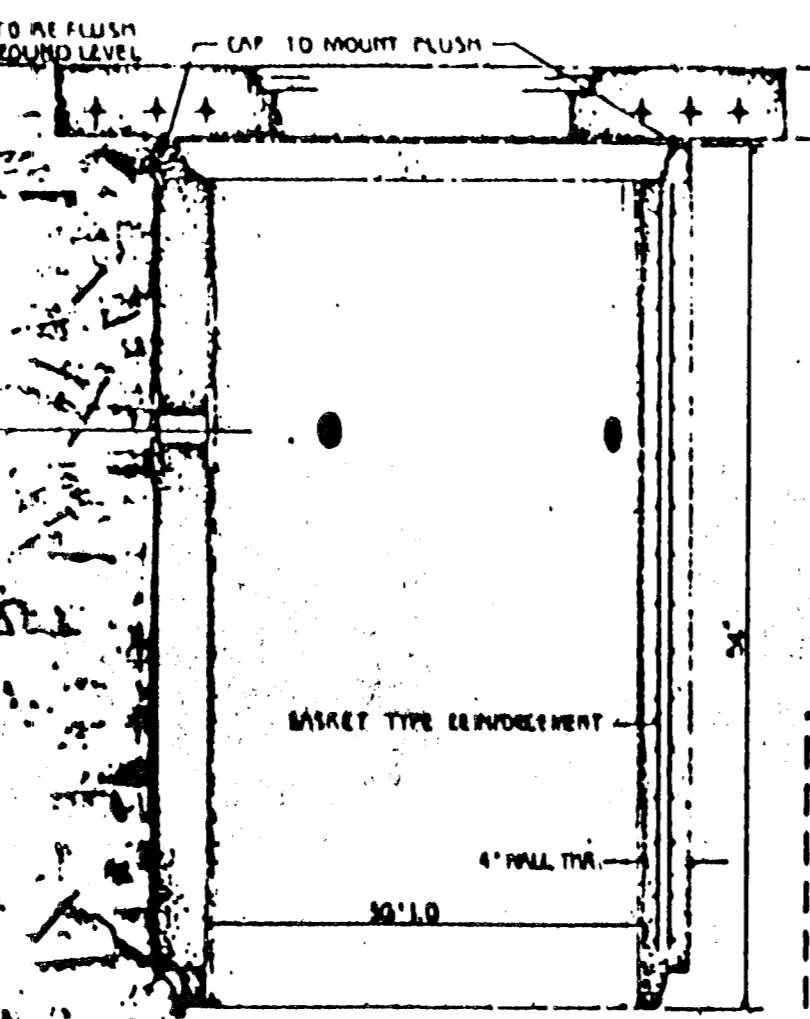
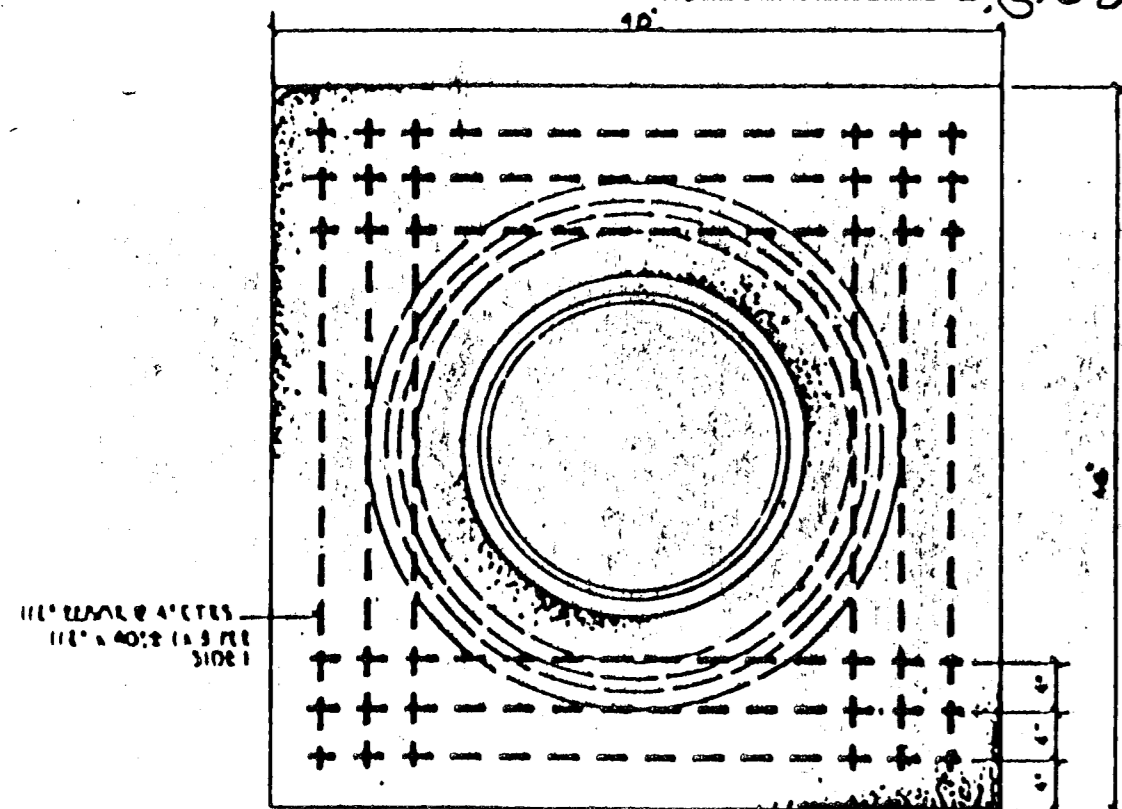
MANHOLE RING & SOLID COVER
(CAST IRON)



WALKWAY RING & SOLID COVER
(CAST IRON)

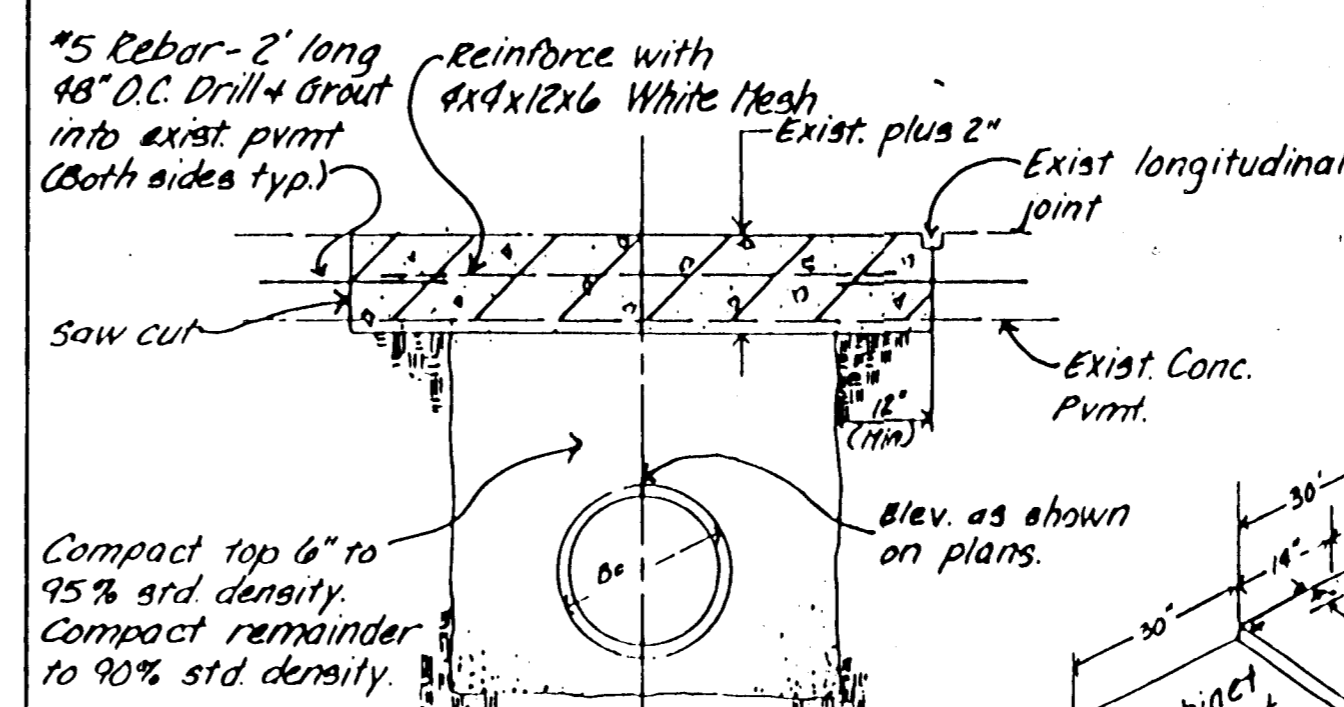


PRE-FAB SERVICE BOX
(36" I.D. x 54" R.C.P.)
6" CAP

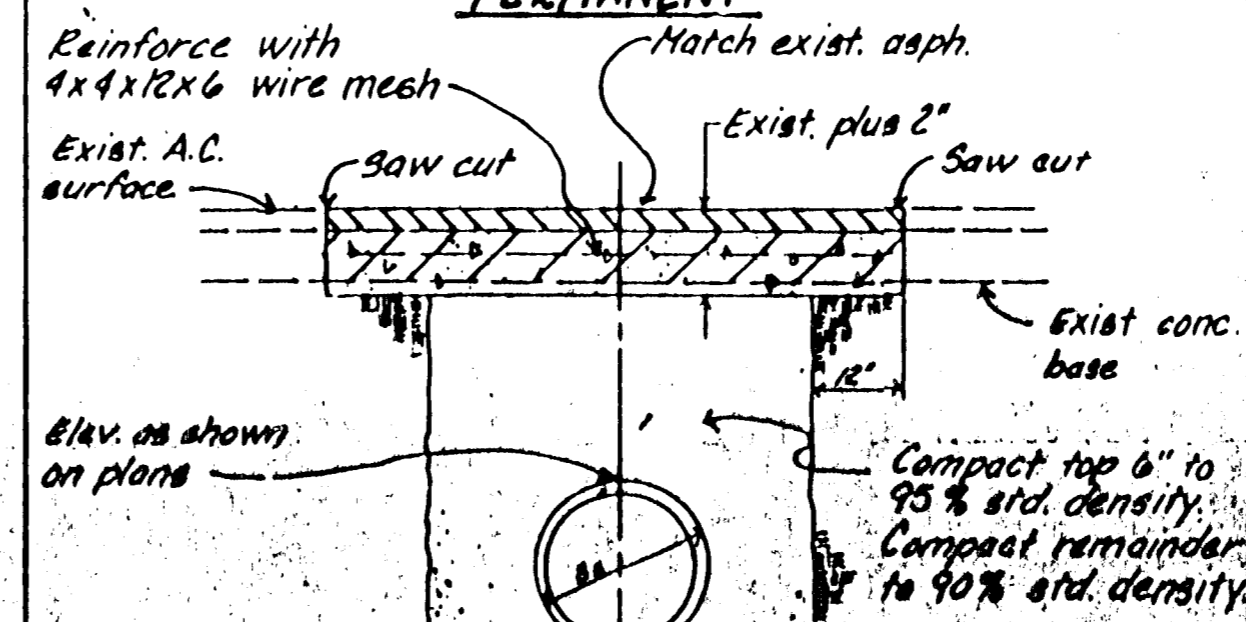


CONDUIT / DETECTOR WIRE INSTALLATION DETAILS

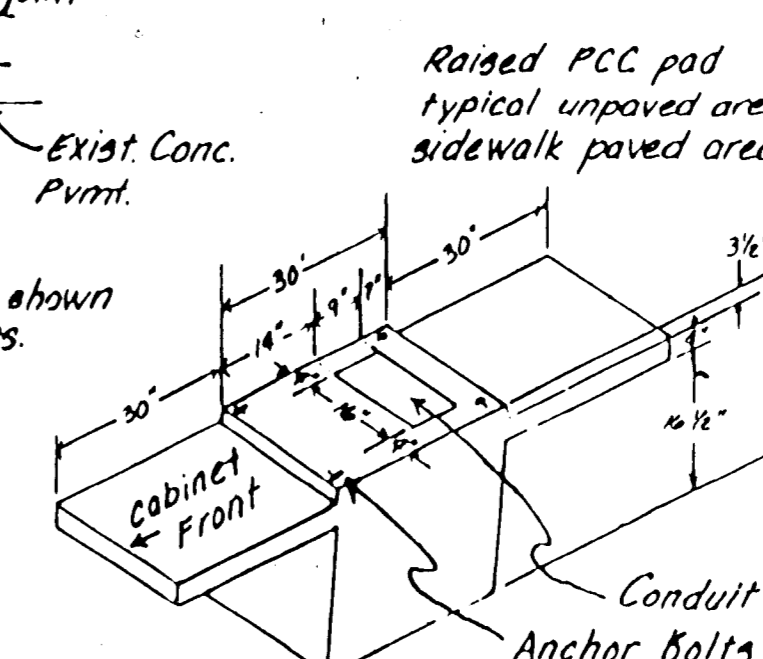
CONTROLLER PAD DETAILS FOR TYPE 170 CONTROLLER



CONCRETE PAVEMENT
PERMANENT

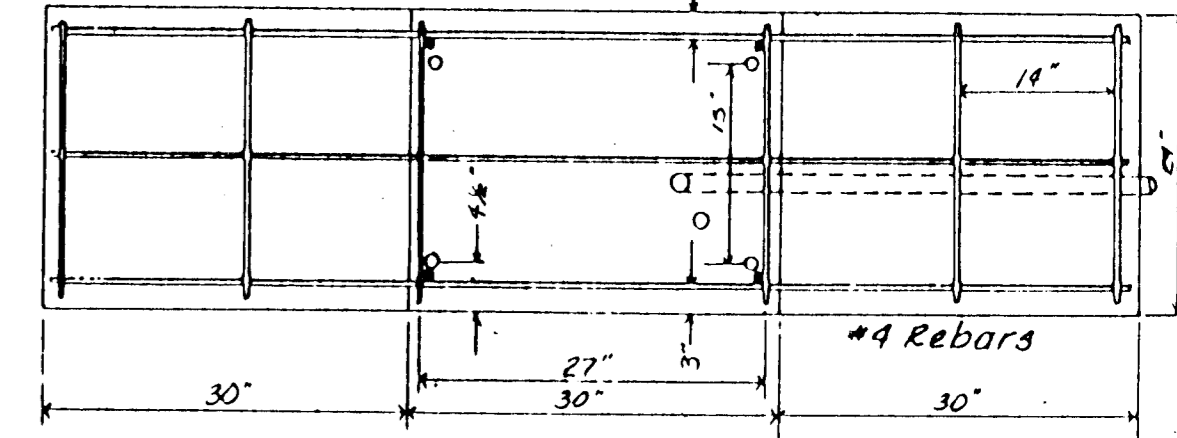


ASPHALT SURFACE ON
CONCRETE BASE
PERMANENT

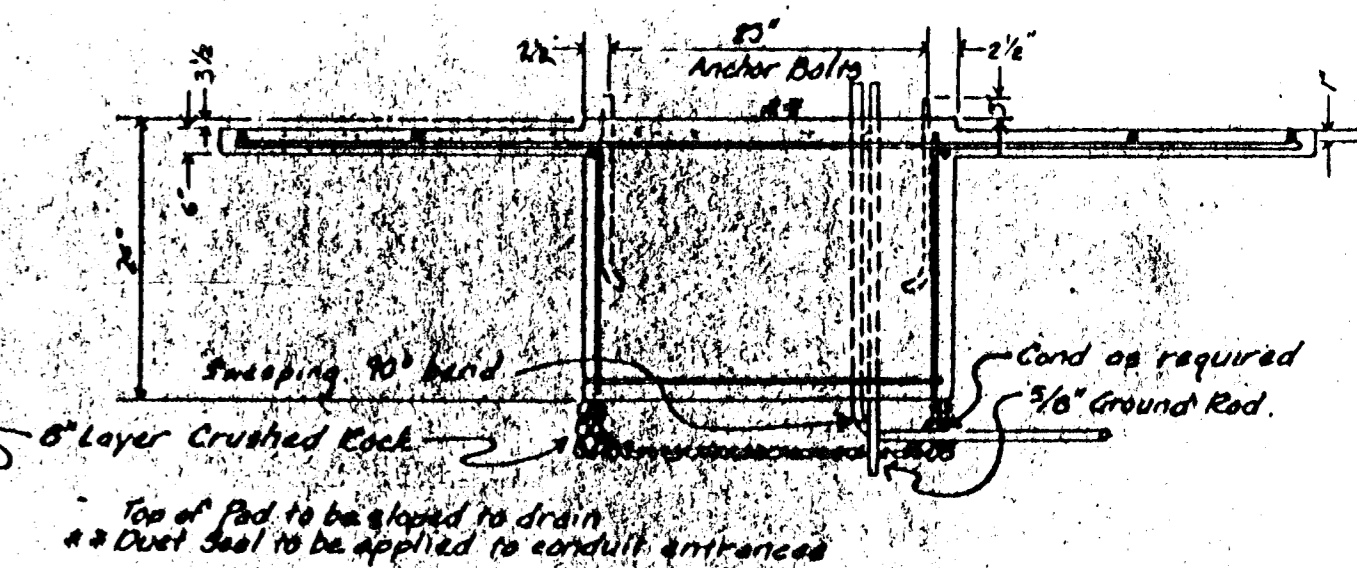
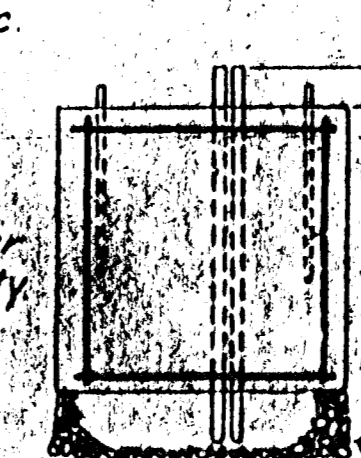


Conduit Area (9" x 16")
Anchor Bolts (4 places)

Note: Construct Contraction Joints perpendicular to conduit at approximately 30' O.C. such that they match contraction joints in existing pavement.



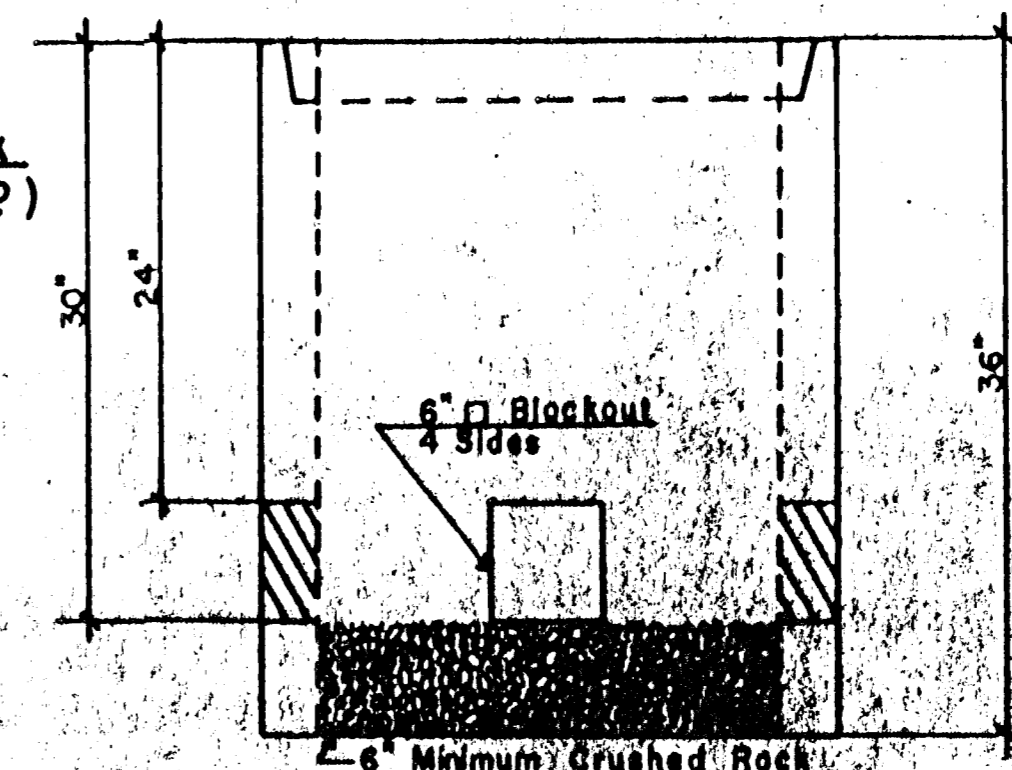
Anchor Bolts typ. (4 ea, 3/4" x 15" x 2)



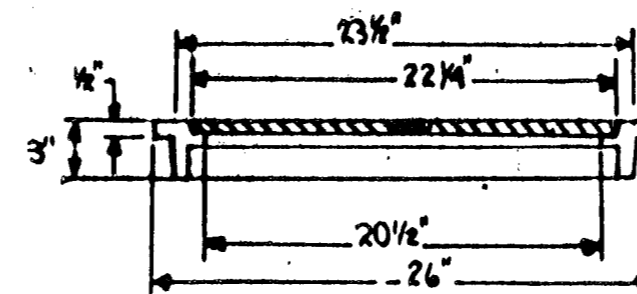
JUNCTION BOX DETAILS

PRE-FAB Junction Box
(24" I.D. x 36" R.C.P.)

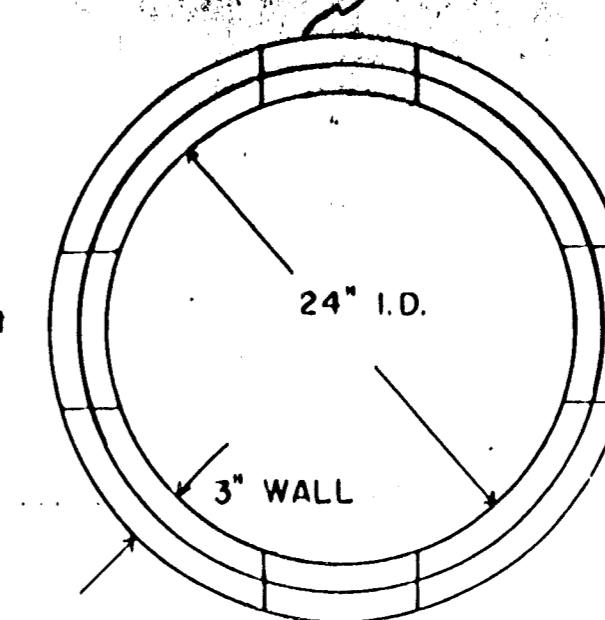
NOTE: Grout ring in junction box.



W2.0 x W2.0, 3" x 6"
Welded Wire Fabric



Typical 6" □ Blockout



NOTES All Service Boxes And Junction Boxes Do Have 6" Min. Crushed Rock.

SERVICE BOX

- CONDUIT CONNECTION TO BE FLUSH TO WITHIN 5" OF INSIDE FACE OF SIDE WALL WITH ABILITY TO DRAIN CONDUIT INTO SERVICE BOX.
- CONDUIT CONNECTIONS TO SERVICE BOX SHALL BE TERMINATED WITH PLASTIC CABLE BUSHING.
- CONDUIT SHALL BE SEALED WITH APPROVED SEALER AT INSIDE WALL FACE.
- A PRE-CAST SERVICE BOX WITH OPEN BOTTOM WILL BE ACCEPTED AS ALTERNATE SUBJECT TO APPROVAL BY ENGINEER.

JUNCTION BOX

- BOX TO BE INSTALLED FLUSH WITH GROUND LEVEL (VARIABLE WITH BOX HEIGHT).
- PRE-CAST (R.C.P.) JUNCTION BOX TO BE USED. OTHER DESIGNS OR SIMILAR SIZE & SHAPE MAY BE USED AS ACCEPTABLE ALTERNATIVE SUBJECT TO APPROVAL.

TRENCHING

- CONDUIT DEPTH TO BE 30" MINIMUM AS SHOWN WITH ROCK & STUBBLE FREE BACKFILL TO SERVE AS BEDDING MAT'L. MAINTAIN MINIMUM CONDUIT DEPTH IN TRENCH.
- BACKFILL TO BE COMPACTED IN 6" LOOSE LIFTS BY HAND OR MECHANICAL TAMPING TO A 95% STANDARD DENSITY.
- SLOPE CONDUIT TO DRAIN AS DIRECTED BY THE ENGINEER.
- 3" RIGID GALV. STL. CONDUIT BETWEEN SERV. BOXES 1 1/4" BTWN. S/B & JUNC. BOXES 3/4" BTWN. J/B & CURB FACE

PROJECT DESCRIPTION
SERVICE / JUNCTION BOX / CONTROLLER PAD
CONSTRUCTION / INSTALLATION DETAILS

PROJECT NUMBER

BOOK NO. DRAWN BY SEAL APPROVED BY DATE AUG 63 REVISED

CITY OF WICHITA
DEPARTMENT OF PUBLIC WORKS
TRAFFIC ENGINEERING DIVISION
WM G MCKINLEY TRAFFIC ENGINEER

REVISION DATE	COMMENTS	INT.
Rev. 1B	Change Controller Box	JOB
Rev. 1C	Change Conduit Depth	JOB
Rev. 1D	Change Conduit Depth	JOB
Rev. 1E	Change Junction Box	JOB