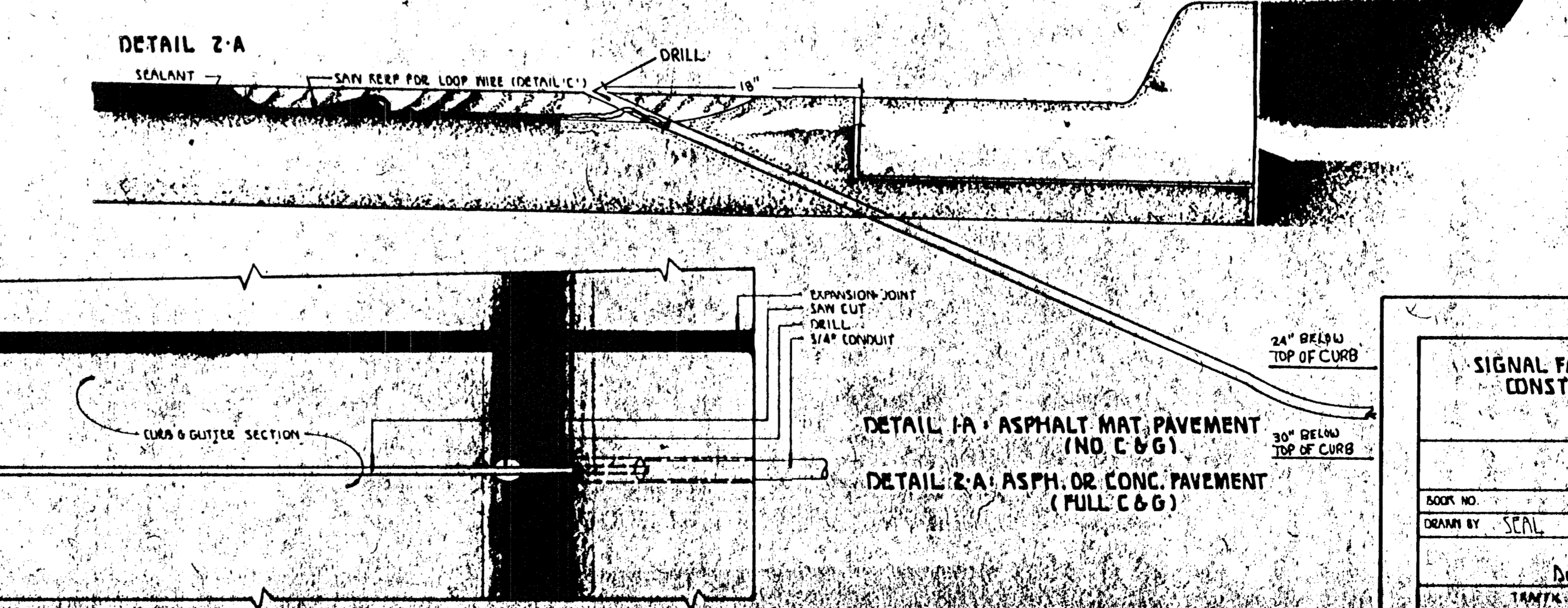
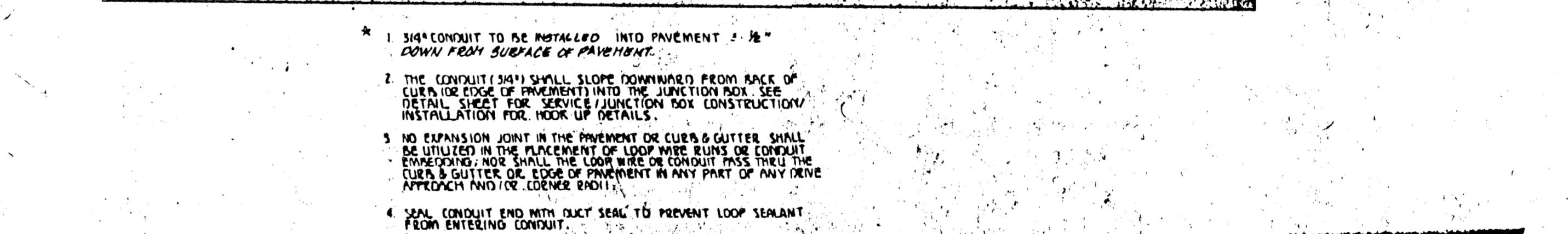
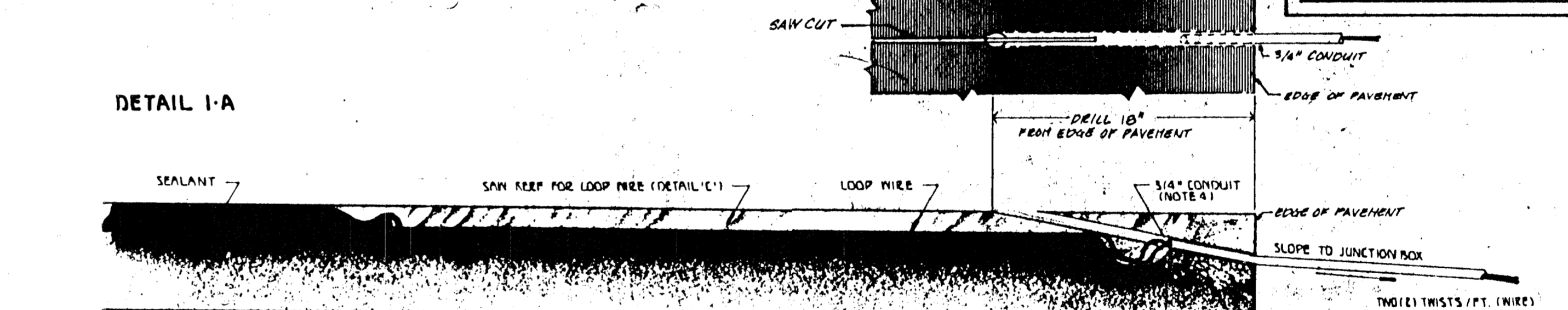
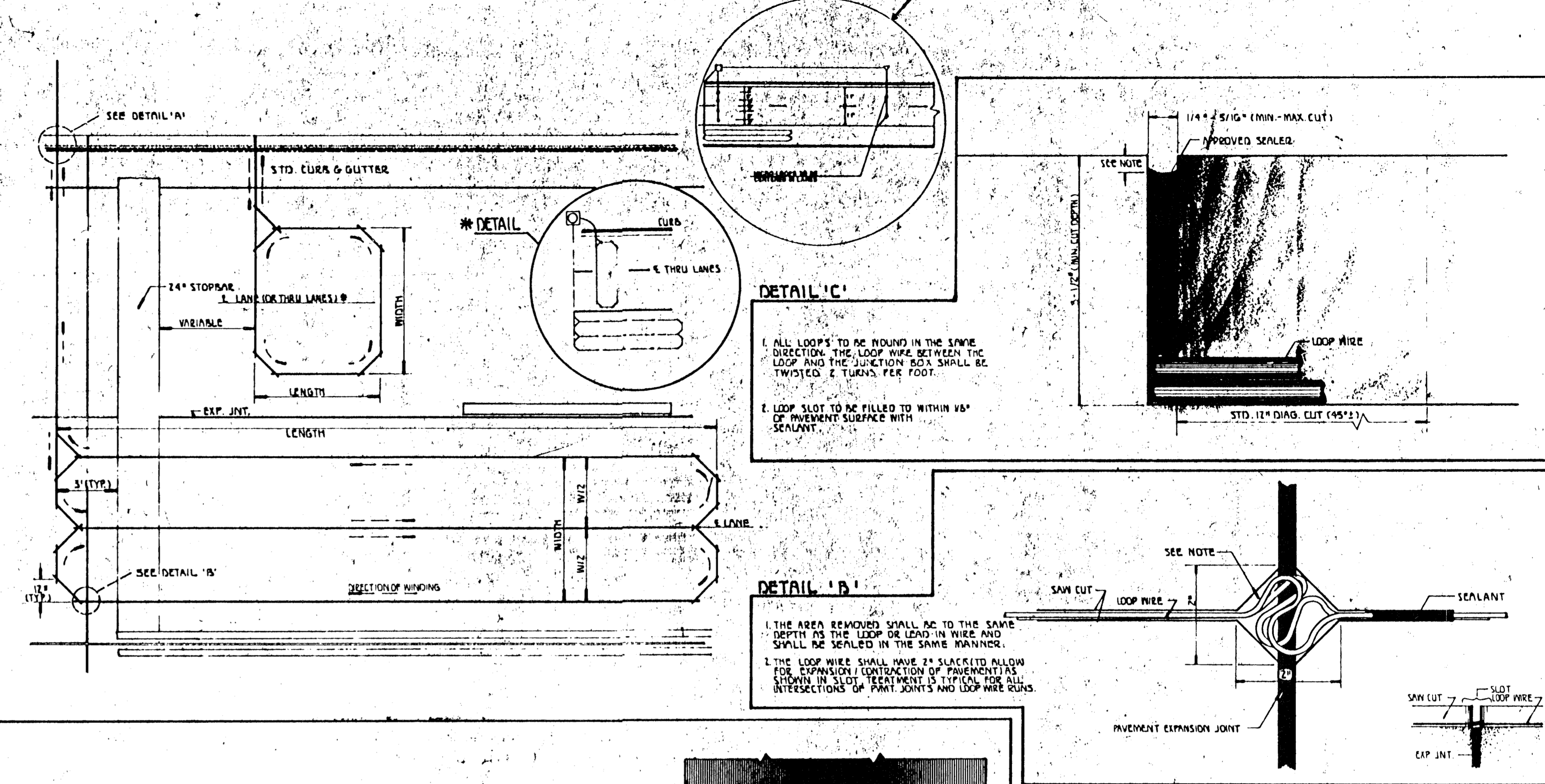


SIGNAL FACE ARRANGEMENT

SIGNAL 'B' IS PROGRAMMED TYPE (P).
 SIGNAL 'E' IS DUAL-MODE GREEN/YELLOW ARROW SECTION TYPE (D).
 SIGNAL 'K' IS TYPICAL S-SECTION ARRANGEMENT USED BY C.O.W.
 (6" S-SECT. w/ 12" ARROWS.)

LOOP CONSTRUCTION/INSTALLATION DETAILS



- NOTES:**
1. LOOP FEEDER CONDUIT SHALL BE MINIMUM 12" FROM ANY OTHER LOOP FEEDER CONDUIT.
 2. SAW CUT RUNNING PARALLEL WITH EXPANSION JOINT OR ANY OTHER SAW CUT SHALL BE MINIMUM 12" APART.
 3. a. Loops - 25' or less - 4 turns
 b. Loops - over 25' - 3 turns
 c. Quad Loops - 2-4-2 turns

REV. DATE	COMMENTS	INT.
10/1/87	REVISED DETAIL 1-A, 1-B, 1-C AND DRILL	10/1/87
10/1/87	REVISED DETAIL 1-A, 1-B, 1-C AND DRILL	10/1/87
10/1/87	REVISED DETAIL 1-A, 1-B, 1-C AND DRILL	10/1/87
10/1/87	REVISED DETAIL 1-A, 1-B, 1-C AND DRILL	10/1/87
10/1/87	REVISED DETAIL 1-A, 1-B, 1-C AND DRILL	10/1/87
10/1/87	REVISED DETAIL 1-A, 1-B, 1-C AND DRILL	10/1/87
10/1/87	REVISED DETAIL 1-A, 1-B, 1-C AND DRILL	10/1/87
10/1/87	REVISED DETAIL 1-A, 1-B, 1-C AND DRILL	10/1/87
10/1/87	REVISED DETAIL 1-A, 1-B, 1-C AND DRILL	10/1/87
10/1/87	REVISED DETAIL 1-A, 1-B, 1-C AND DRILL	10/1/87

PROJECT DESCRIPTION
SIGNAL FACE ARRANGEMENT / LOOP DETECTOR CONSTRUCTION AND INSTALLATION DETAILS

PROJECT NUMBER

BOOK NO. APPROVED BY DATE SEPT 85
 DRAWN BY SEAL

CITY OF NICHITA
 DEPARTMENT OF PUBLIC WORKS

TRAFFIC ENGINEERING
 W. B. MANHLEN, TRAFFIC ENGINEER

32 of 58